

INNOVATION • DEFENSE  
NONPROLIFERATION • ENVIRONMENT



**We make the world safer.**

# H-Area Asbestos Transite Pits

**Bette H. Ross**

Environmental Compliance – CERCLA  
*Core Team Meeting, February 21, 2024*

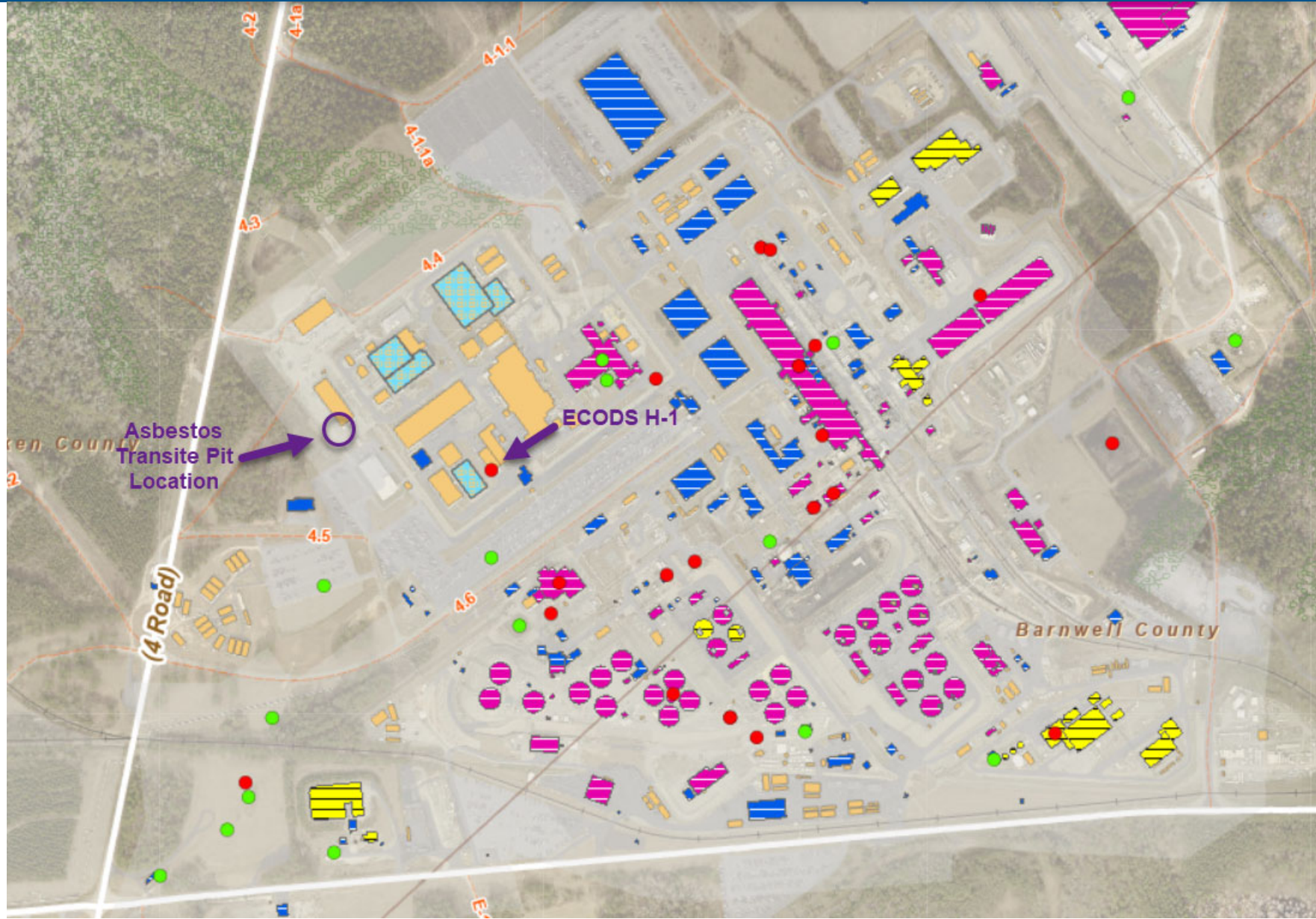
# Background



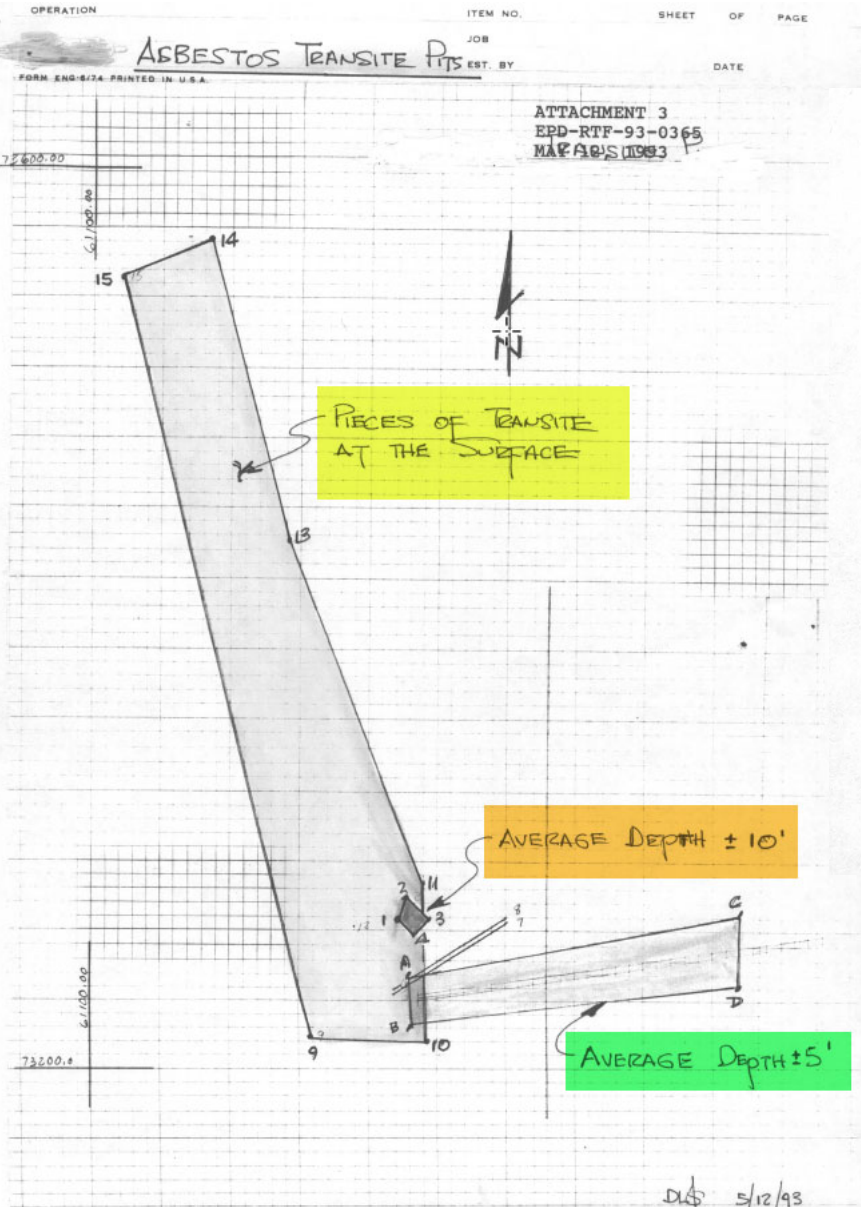
- In 1993, a Site Clearance permit was requested to create a temporary parking area to accommodate construction personnel.
- May 1993 closure documentation identifies three asbestos transite/rubble pits that were encountered during the project construction. The pit depths ranged from ground surface to 10 feet.
- The areas were marked on the Site Use map in 1993. However, they were not identified as potential site evaluation units under the Federal Facility Agreement (FFA). There is no asbestos or other rubble currently at the ground surface. It is unclear what, if any, excavations were conducted in the 1993 actions. However, since the permit closure discusses asbestos transite at the ground surface and none is currently present, some removal activities were conducted at some point since 1993.



# General Location in H-Area (near Building 217-3H)



# Asbestos Transite Pit Details



## ASBESTOS TRANSITE PIT COORDINATES/DESCRIPTIONS

**GREEN HI-LITED AREA BOUNDED BY POINTS A THRU D**  
 AVERAGE DEPTH OF TRANSITE PIECES ± 5 FEET.

|         |           |           |
|---------|-----------|-----------|
| POINT A | N73235.00 | E61244.83 |
| POINT B | N73222.00 | E61244.83 |
| POINT C | N73270.00 | E61349.85 |
| POINT D | N73250.00 | E61349.85 |

**ORANGE HI-LITED AREA BOUNDED BY POINTS 1 THRU 4**  
 AVERAGE DEPTH 2 TO 10 FEET

|         |        |        |
|---------|--------|--------|
| POINT 1 | N73267 | E61240 |
| POINT 2 | N73277 | E61244 |
| POINT 3 | N73270 | E61252 |
| POINT 4 | N73260 | E61246 |

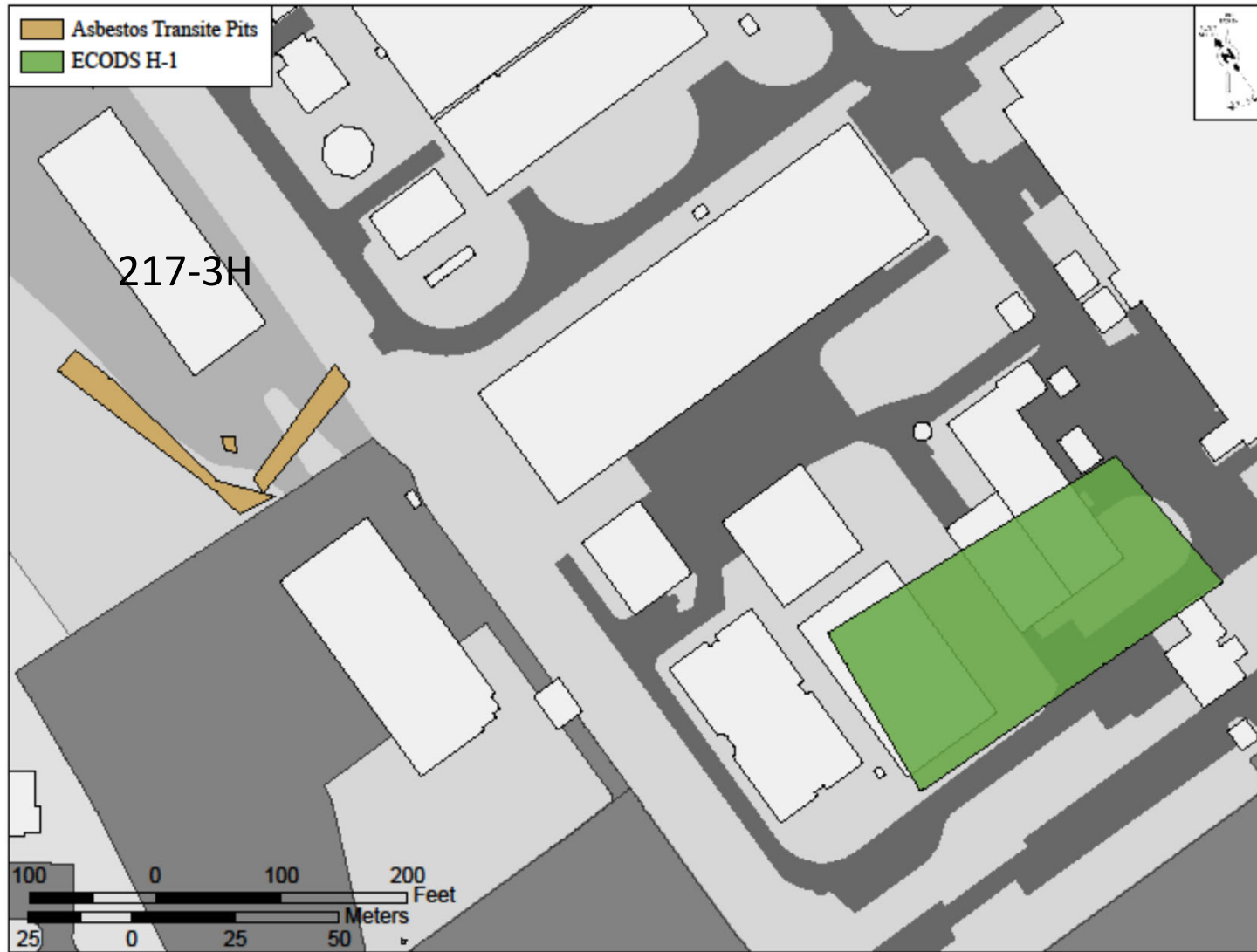
**YELLOW HI-LITED AREA BOUNDED BY POINTS 9 THRU 15**

TRANSITE PIECES FOUND AT GRADE LEVEL-NO EXCAVATIONS PERFORMED IN THIS AREA

|          |        |        |
|----------|--------|--------|
| POINT 9  | N73219 | E61220 |
| POINT 10 | N73214 | E61250 |
| POINT 11 | N73251 | E61220 |
| POINT 12 | N73245 | E61215 |
| POINT 13 | N73365 | E61200 |
| POINT 14 | N73400 | E61190 |
| POINT 15 | N73395 | E61170 |

Source: Request for Site Clearance Permit Closure

# Location of Transite Pits



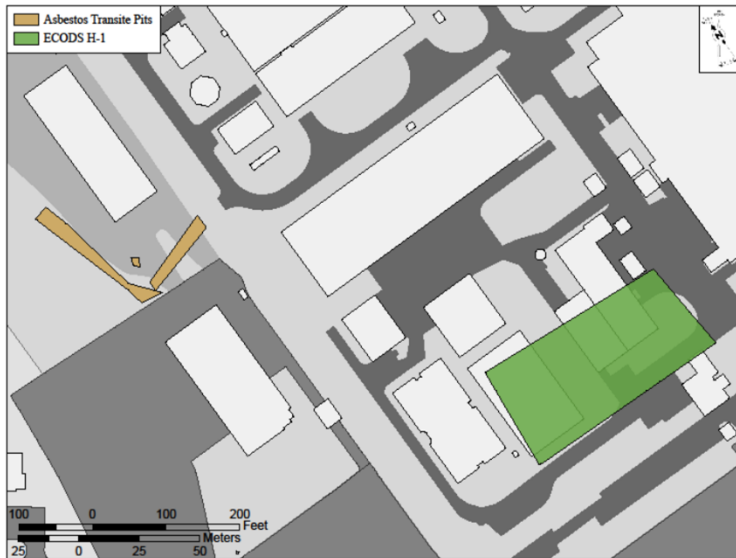
# Current Views of Pit Locations



## Other Operable Units in the Area

- Early Construction and Operational Disposal Site (ECODS) H-1 was used as a construction material disposal area during the building of H Area. It was used from February 1952 to August 1952, when it was closed. The site was a subsurface disposal trench approximately 100 feet by 250 feet and 10 feet in depth. Since its closure in 1952, three buildings associated with the Tritium Facility were built over the ECODS H-1 location: Building 238-H in 1969, Building 237-H in 1970, and Building 235-H in 1984.
- ECODS H-1 is currently on FFA Appendix C, RCRA/CERCLA Units, and is a subunit of the H-Area Operable Unit (HAOU).
- Currently, the FFA schedule for the HAOU Field Start (i.e., initiation of characterization activities) is September 2037 (Appendix E).

# Proposed Path Forward



- Based on the operational history of H Area and the proximal location of ECODS H-1 and the asbestos transite pits, Savannah River Site (SRS) believes that none of the units pose an imminent threat to human health or to the environment as long as the materials are undisturbed.
- SRS recommends that the asbestos transite pits be included as part of ECODS H-1 and remain on FFA Appendix C, RCRA/CERCLA Units List.
- The SRS Geographic Information System maps will be updated to reflect that the asbestos transite pits are part of ECODS H-1. This will ensure that no intrusive activities will occur within the pit footprints.

INNOVATION • DEFENSE

NONPROLIFERATION • ENVIRONMENT

# SRNS

Savannah River Nuclear Solutions

We make the world **safer.**

