

**ENVIRONMENTAL COMPLIANCE & AREA COMPLETION PROJECTS (EC&ACP) STANDARD
OPERATING PROCEDURES, VOL. I**
Manual: C3
Procedure: ER-IDS-019-061
Revision: 2
Effective Date: 06/01/2016
Type-Class: Form
Page: 1 of 4
P-AREA ASH BASIN AND P-007 OUTFALL FIELD INSPECTION CHECKLIST
WORKING COPY

This document is a Working Copy. Prior to start of work, verify this is the latest revision per the Procedure Index.

Charles P. Carter

Verified By

3-22-18

Date

CAUTION

The Inspector shall IMMEDIATELY notify the Post-Closure Manager and Environmental Compliance Authority if there has been a breach or compromise of the institutional controls of this waste unit. This notification shall be in accordance with Savannah River Site post-closure inspection procedures.

NOTE

1. Manual C3, ER-SOP-019, *Waste Unit Inspection and Maintenance*, shall be referred to for inspection details.
2. Steps in this checklist may be completed concurrently or in any order.

SCHEDULED

UNSCHEDULED

A = Satisfactory	A or X	Observation/Corrective Action Taken
X = Unsatisfactory (Explanation required)		
1. Verify roads are accessible.	A	
2. Verify waste units warning signs (16) are in acceptable condition, have correct information, and are legible from a distance of 25 feet.	A	

P-Area Ash Basin and P-007 Outfall Field Inspection Checklist

Manual: C3
 Procedure: ER-IDS-019-061
 Revision: 2
 Page: 2 of 4

 SCHEDULED

 UNSCHEDULED

A = Satisfactory X = Unsatisfactory (Explanation required)		A or X	Observation/Corrective Action Taken
3.	Visually check vegetative covers for grass density with bare spots no more than 3 feet by 3 feet. No woody vegetation is growing on the basin covers. Remove or identify as needed. The height of the vegetation covers should not impair the visual inspection of the closure covers. This will be determined by EC&ACP Post Closure Inspector.	A	
4.	Verify P-Area Ash Basin and P-007 Outfall soil covers has no signs of unacceptable erosion and subsidence.	A	
5.	Check integrity of drainage ditches, for presence of excessive erosion, sediment build-up and any debris restricting water flow.	X	VEGETATION GROWING IN THE P-007 OUTFALL REP RAP CHANNEL. SEE MAP NOTE D. REF. MAINT. Register PL-2018-00028
6.	Verify signs of burrowing or mounding animals are not present on ash basin and P-007 outfall covers.	X	ACTIVE ANT MOUNDS ON SOIL COVERS. SEE MAP NOTE D. REF. MAINT. Register PL-2018-00029
7.	Verify there are no unauthorized excavations, digging, or construction activities within P-Area Ash Basin and P-007 Outfall boundaries.	A	
8.	Other <i>NO FURTHER ENTRIES</i>		<i>CPL 3-22-18</i>

Inspected By

CHARLES P. CARTER
 (Print Name)

Charles P. Carter
 (Signature)

3-22-18
 (Date)

Review By Post-Closure Manager

George W. Joyner
 (Print Name)

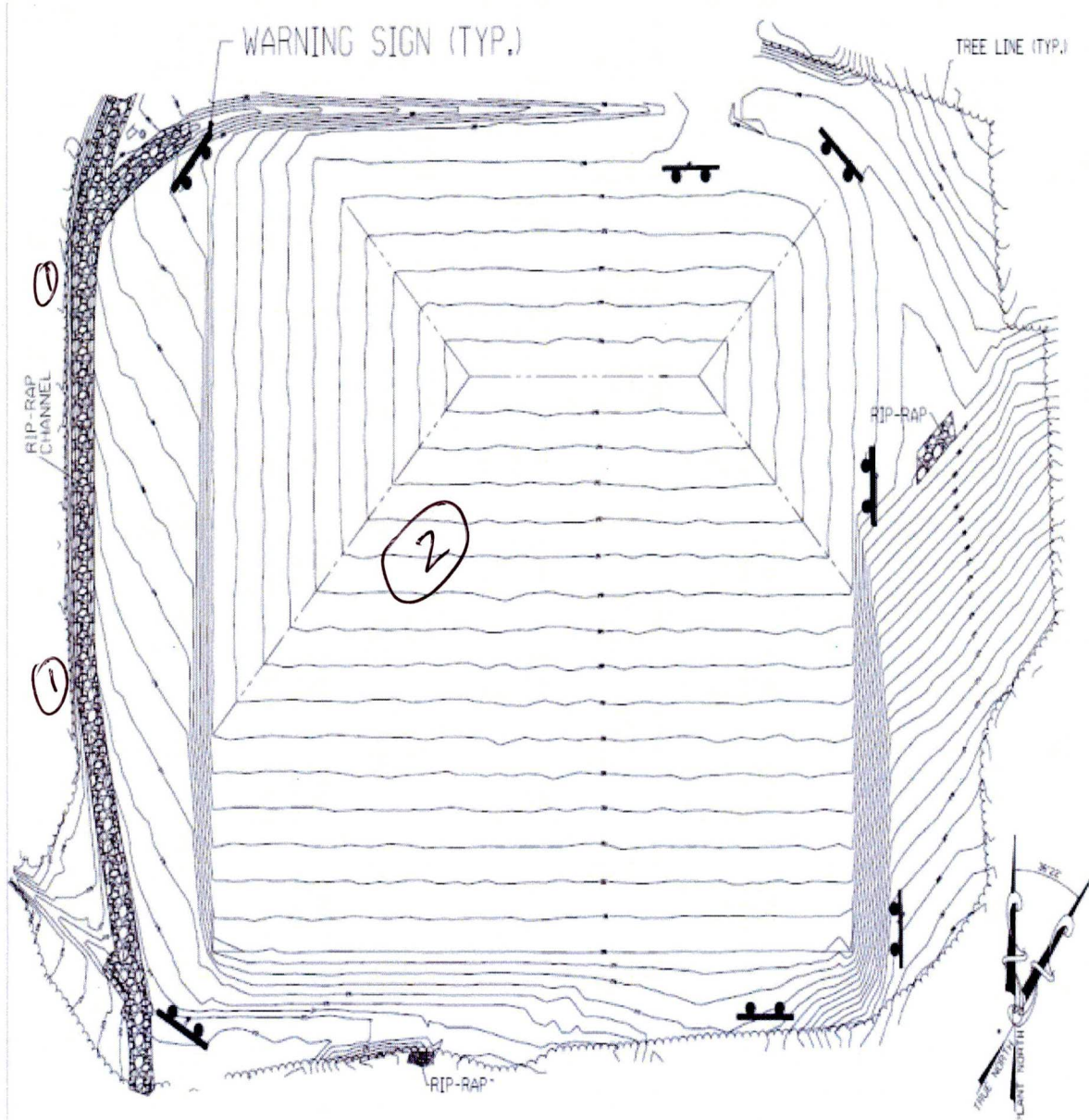
George W. Joyner
 (Signature)

3/28/18
 (Date)

P-Area Ash Basin and P-007 Outfall Field Inspection Checklist

Manual: C3
Procedure: ER-IDS-019-061
Revision: 2
Page: 3 of 4

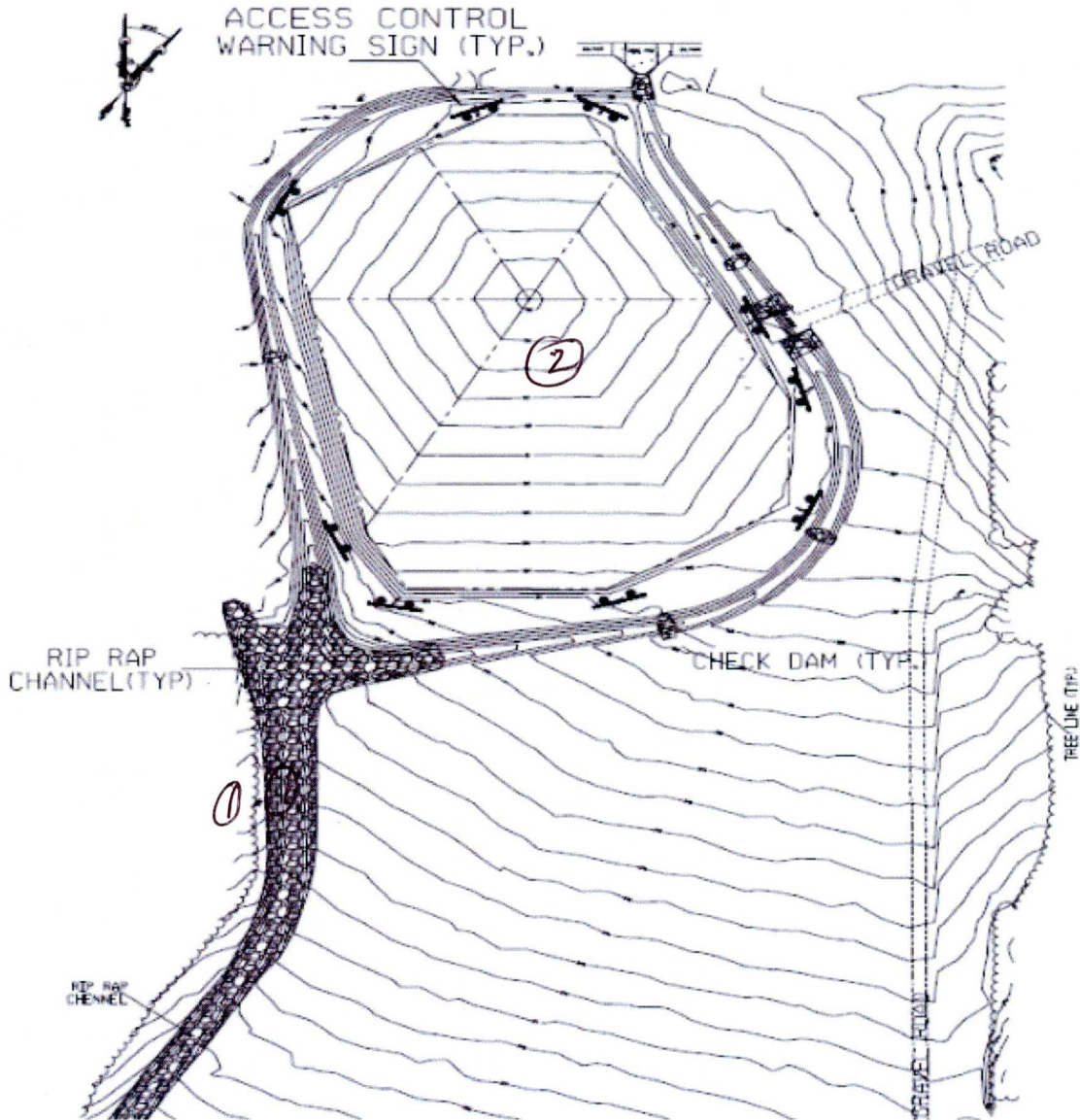
P-Area Ash Basin (188-P)



P-Area Ash Basin and P-007 Outfall Field Inspection Checklist

Manual: C3
Procedure: ER-IDS-019-061
Revision: 2
Page: 4 of 4

P-007 Outfall



NOTES: ① = VEGETATION GROWING IN THE P-007 OUTFALL RIP RAP CHANNEL. USES WILL APPLY HERBICIDE. ② = ACTIVE ANT MOUNDS ON SOIL COVER. Applied 3.0 lbs of EXTINGUISH ANT BAIT.

~~NO FURTHER ENTRIES~~

CPL 3-22-18

POST CLOSURE MAINTENANCE REGISTER

Index Number

Unit Name

313 P AREA OPERABLE UNIT ASH BASIN 188-P AND P-007 OUTFALL

Watershed LOWER THREE RUNS

AHA # NA
 Work Order # N/A
 Work Group POST CLOSURE MAINTENANCE
 Priority Medium
 RCRA NO

Maintenance Number PC-2018-00029

Maintenance Status Complete

Inspection Date 3/22/2018

Chemical Type Pesticide

Completion Date 3/22/2018

Chemical Name Extinguish

Amount Used 3.0 Pounds

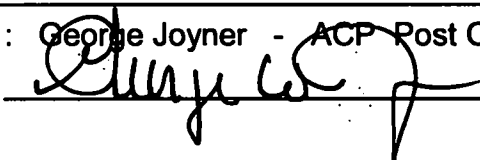
Description Of Maintenance Item
 Active ant mounds on waste unit

Maintenance Item Corrected
 Applied Extinguish pesticide .

Notes New observation.

Approved by : George Joyner - ACP Post Closure Manager

Signature



Approval date :

3/28/18

POST CLOSURE MAINTENANCE REGISTER

Index Number

Unit Name

313 P AREA OPERABLE UNIT ASH BASIN 188-P AND P-007 OUTFALL

Watershed LOWER THREE RUNS

AHA # NA
 Work Order # N/A
 Work Group ROADS & GROUNDS
 Priority Medium
 RCRA NO

Maintenance Number PC-2018-00028 **Maintenance Status** Complete
Inspection Date 3/22/2018 **Chemical Type** NA
Completion Date 9/27/2018 **Chemical Name**
 Amount Used

Description Of Maintenance Item

Vegetation growing in the P-007 Outfall rip rap channel. Herbicide needs to be applied.

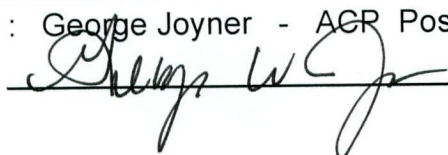
Maintenance Item Corrected

Site Roads & Grounds applied herbicibe.

Notes New observation.

Approved by : George Joyner - ACR Post Closure Manager

Signature



Approval date :

10/8/18