

**Metallurgical Laboratory Hazardous Waste Management Facility (HWMF) Post Closure Field
Inspection Checklist**

 Manual: C3
 Procedure: ER-IDS-019-020
 Revision: 5
 Page: 2 of 5

 SCHEDULED

 UNSCHEDULED

A = Satisfactory X = Unsatisfactory (Explanation required)	A or X	Observation/Corrective Action Taken
3. Verify fence wire, posts, gates, and other areas of fence are intact and in good condition (e.g., shows no signs of serious wear).	A	
4. Check for excessive vegetation growing over fences, which may obstruct warning signs or visibility of closure cover.	A	
5. Walk across the closure cover and check for erosion, abnormal soil cracks and evidence of burrowing animals.	X	Active Ant Mounds on Soil Cover. See Map Note ① Res. Maint. Register. No PC-2018-00012
6. Check integrity of drainage ditches inside and outside fenced areas for erosion and presence of soil sediment or debris restricting water flow. Standing water not to exceed 30 feet in length.	A	
7. Visually check cover and side slopes for any subsidence/ depressions.	A	
8. Visually check vegetative cover for grass density with no bare spots more than 3 feet in diameter. There should be no woody vegetation or shrubs growing on the Closure cover. The height of vegetative cover should not impair visual inspection of closure. This will be determined by the Post Closure Inspector.	A	
9. Visually perform a condition check of the survey monitor or benchmarks for damage and visibility.	A	
10. Verify unattended gates are locked to prevent unauthorized entry.	A	

Manual: C3
 Procedure: ER-IDS-019-020
 Revision: 5
 Page: 3 of 5

Metallurgical Laboratory Hazardous Waste Management Facility (HWMF) Post Closure Field
 Inspection Checklist

SCHEDULED

UNSCHEDULED

A = Satisfactory X = Unsatisfactory (Explanation required)	A or X	Observation/Corrective Action Taken
11. Check side slopes for signs of slumping and channels or excessive erosion.	A	
12. Verify annual topographic/subsidence survey has been performed by end of June for current year. Verify copies of survey results are in EC&ACP Document Control Center.	A	Survey completed 4/25/17 RA
13. The Inspector shall verify in January, April, July, and October, the previous "Quarterly Monitoring Well Inspection Summary Report" has been sent to EC&ACP Document Control Center. This report can be obtained from Post Closure Well Maintenance Group.	A	See Document Number SRNS - J2000-2018-00035 RA
14. Inspect A-008 Diversion Ditch for the presence of erosion and debris restricting water flow.	A	
15. Verify Carolina Bay "Danger Unauthorized Personnel Keep Out" signs (11) are posted and are legible from a distance of 25 feet.	A	
16. Other		No further entries RA 2/20/18

Inspected By

Richard Feagin
 (Print Name)

Richard Feagin
 (Signature)

2/20/18
 (Date)

Review By Post-Closure Manager

George W. Joyner
 (Print Name)

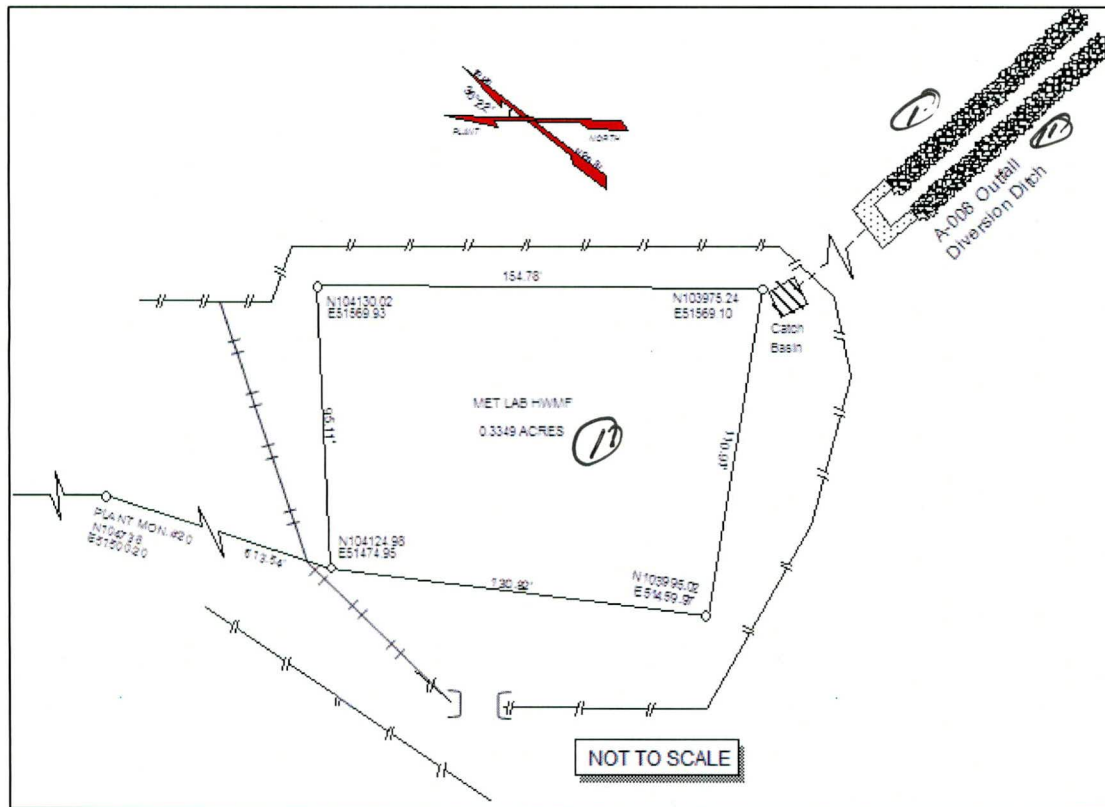
George W. Joyner
 (Signature)

3/5/18
 (Date)

Metallurgical Laboratory Hazardous Waste Management
Facility (HWMF) Post Closure Field Inspection Checklist

Manual: C3
Procedure: ER-IDS-019-020
Revision: 5
Page: 4 of 5

Map of Metallurgical Laboratory HWMF



NOTES: See Map Note ⑩ = Active Ant Mounds on soil cover
Applied 3.0 lbs of Extinguish Ant Bait.
~~No Further Entries 2/20/18~~

POST CLOSURE MAINTENANCE REGISTER

Index Number
Unit Name

15 METALLURGICAL LABORATORY HAZARDOUS WASTE MANAGEMENT FACILITY - 904-110G

Watershed UPPER THREE RUNS

AHA # NA
 Work Order # NA
 Work Group POST CLOSURE MAINTENANCE
 Priority Medium
 RCRA YES

Maintenance Number	PC-2018-00012	Maintenance Status	Complete
Inspection Date	2/20/2018	Chemical Type	Pesticide
Completion Date	2/20/2018	Chemical Name	Extinguish
		Amount Used	3.0 Pounds

Description Of Maintenance Item

Active ant mounds on waste unit

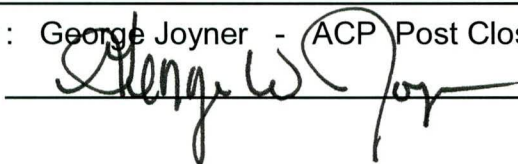
Maintenance Item Corrected

Applied Extinguish pesticide

Notes New observation

Approved by : George Joyner - ACP Post Closure Manager

Signature



Approval date :

3/5/18