

**ENVIRONMENTAL COMPLIANCE & AREA COMPLETION PROJECTS (EC&ACP) STANDARD
OPERATING PROCEDURES, VOL. I**
Manual: C3
Procedure: ER-IDS-019-009
Revision: 6
Effective Date: 06/02/2016
Type-Class: Form
Page: 1 of 3

F-AREA RETENTION BASIN (BLDG. 381-3F) FIELD INSPECTION CHECKLIST
WORKING COPY

This document is a Working Copy. Prior to start of work, verify this is the latest revision per the Procedure Index.



Verified By

4-27-18

Date

CAUTION

The Inspector shall IMMEDIATELY notify the Post-Closure Manager and Environmental Compliance Authority if there has been a breach or compromise of the institutional controls of this waste unit. This notification shall be in accordance with Savannah River Site post-closure inspection procedures.

NOTE

1. Manual C3, ER-SOP-019, *Waste Unit Inspection and Maintenance*, shall be referred to for inspection details.
2. Monitoring wells associated with this waste unit are maintained in accordance with EC&ACP Monitoring Well Procedures.
3. Steps in this checklist may be completed concurrently or in any order.

 SCHEDULED
 UNSCHEDULED

A = Satisfactory X = Unsatisfactory (Explanation required)		A or X	Observation/Corrective Action Taken
1.	Verify roads to waste unit are accessible.	A	
2.	Verify that the waste unit signs (4) and underground piping signs (12) are in acceptable condition, have the correct information and are legible from a distance of 25 feet.	A	

F-Area Retention Basin (Bldg. 381-3F) Field Inspection Checklist

Manual: C3
 Procedure: ER-IDS-019-009
 Revision: 6
 Page: 2 of 3

 SCHEDULED

 UNSCHEDULED

A = Satisfactory X = Unsatisfactory (Explanation required)		A or X	Observation/Corrective Action Taken
3.	Verify that there is no excavating, digging or construction activity on the soil cover or over the subsurface process piping (identified by signs).	A	
4.	Verify that no woody vegetation is growing on the soil cover. Remove or identify as needed.	A	
5.	Visually check vegetative cover for grass density with no bare spots more than 3 feet by 3 feet in area. The height of the vegetation should not impair the visual inspection of the soil cover. This will be determined by the Inspector.	A	
6.	Check the soil cover for signs of erosion or depressions (subsidence).	A	
7.	Check for signs of burrowing animals.	X	ACTIVE ANT mounds ON SOIL COVER. SEE MAP NOTED. REF. MAINT. Register PC-2018-00042
8.	Visually inspect the concrete markers (bench marks) to ensure they are visible and not damaged.	A	
9.	Other <u>NO FURTHER ENTRIES</u>		CPL 4-27-18

Inspected By

CHARLES P. CARTER
 (Print Name)

Charles P. Carter
 (Signature)

4-27-18
 (Date)

Review By Post-Closure Manager

George W. Joyner
 (Print Name)

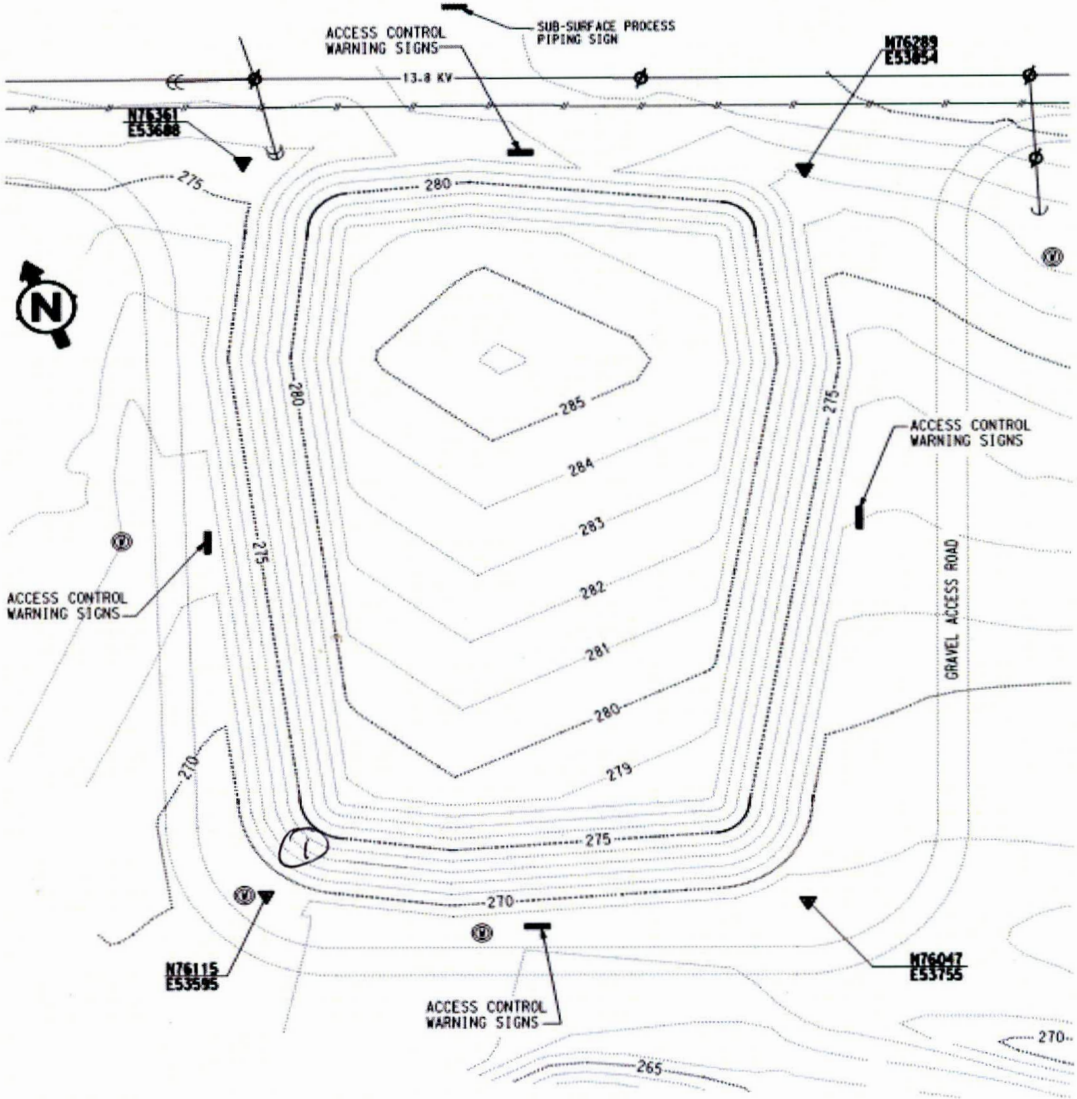
George W. Joyner
 (Signature)

5/29/18
 (Date)

F-Area Retention Basin (Bldg. 381-3F) Field Inspection Checklist

Manual: C3
Procedure: ER-IDS-019-009
Revision: 6
Page: 3 of 3

MAP F-AREA RETENTION BASIN (BLDG. 281-3F)



NOTES: (L) = ACTIVE ANT MOUNDS ON SOIL COVER.
Applied .5 lb EXTINGUISH ANT BAIT.

~~NO FURTHER ENTRIES~~

CR 4-27-18

