

**ENVIRONMENTAL COMPLIANCE & AREA COMPLETION PROJECTS (EC&ACP) STANDARD  
OPERATING PROCEDURES, VOL. I**
**Manual: C3**  
**Procedure: ER-IDS-019-007**  
**Revision: 5**  
**Effective Date: 06/02/2016**  
**Type-Class: Form**  
**Page: 1 of 3**
**L-AREA OIL CHEMICAL BASIN (BLDG. 904-83G) FIELD INSPECTION CHECKLIST**
**WORKING COPY**

This document is a Working Copy. Prior to start of work, verify this is the latest revision per the Procedure Index.

*Charles P. Carter*  
 Verified By

*9-7-18*  
 Date

**CAUTION**

The Inspector shall IMMEDIATELY notify the Post-Closure Manager and Environmental Compliance Authority if there has been a breach or compromise of the institutional controls of this waste unit. This notification shall be in accordance with Savannah River Site post-closure inspection procedures.

**NOTE**

1. Manual C3, ER-SOP-019, *Waste Unit Inspection and Maintenance*, shall be referred to for inspection details.
2. Monitoring wells associated with this waste unit are maintained in accordance with EC&ACP Monitoring Well Procedures.
3. Steps in this checklist may be completed concurrently or in any order.

 **SCHEDULED**
 **UNSCHEDULED**

A = Satisfactory X = Unsatisfactory (Explanation required)		A or X	Observation/Corrective Action Taken
1.	Verify roads to waste unit are accessible.	A	
2.	Verify that the waste unit signs (12) are in acceptable condition, have the correct information and are legible from a distance of 25 feet.  Refer to Manual C1, Procedure ER-AP-127, <i>ACP Waste Unit Field Inspection and Maintenance</i> .	A	

## L-Area Oil Chemical Basin (Bldg. 904-83G) Field Inspection Checklist

Manual: C3  
 Procedure: ER-IDS-019-007  
 Revision: 5  
 Page: 2 of 3

 SCHEDULED

 UNSCHEDULED

A = Satisfactory X = Unsatisfactory (Explanation required)	A or X	Observation/Corrective Action Taken
3. Verify that there is no excavating, digging or construction activity on the soil cover.	A	
4. Verify that no woody vegetation is growing on the soil cover. Remove or identify as needed.	A	
5. Visually check vegetative cover for grass density with no bare spots more than 3 feet by 3 feet in area. The height of the vegetation should not impair the visual inspection of the soil cover. This will be determined by the Inspector.	A	
6. Check the soil cover for signs of erosion or depressions (subsidence).	A	
7. Check for signs of burrowing animals.	X	ACTIVE ANT MOUNDS ON SOIL COVER SEE MAP NOTE: (D) REF. MAINT REGISTER PL-2018-00090
8. Visually inspect the concrete markers (bench marks) to ensure they are visible and not damaged.	A	
9. Other	<del>NO FURTHER ENTRIES</del>	

CPC 9-7-18

## Inspected By

CHARLES P. CARTER  
 (Print Name)

Charles P. Carter  
 (Signature)

9-7-18  
 (Date)

## Review By Post-Closure Manager

George W. Joyner  
 (Print Name)

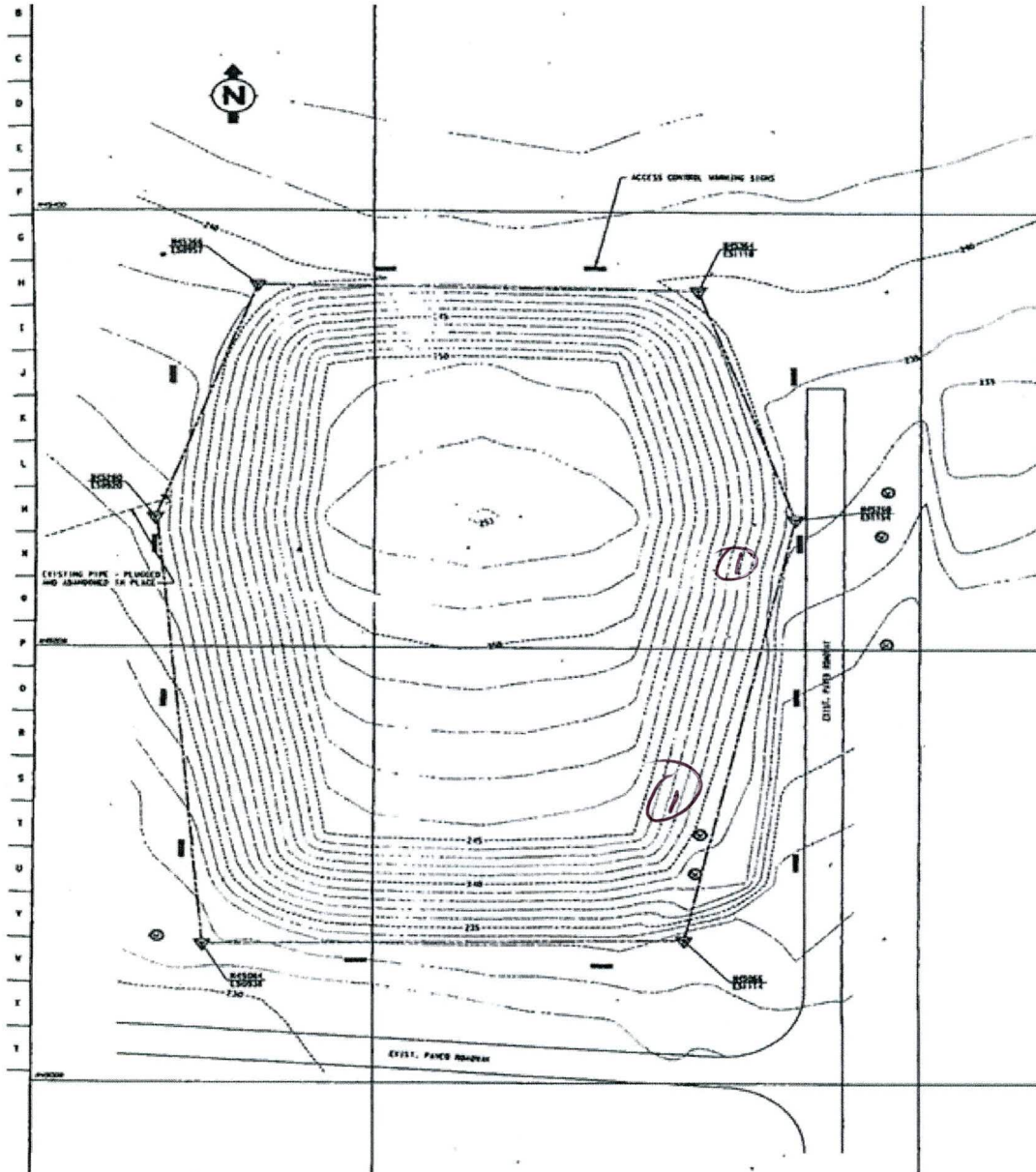
George W. Joyner  
 (Signature)

10/8/18  
 (Date)

L-Area Oil Chemical Basin (Bldg. 904-83G) Field Inspection Checklist

Manual: C3  
Procedure: ER-IDS-019-007  
Revision: 5  
Page: 3 of 3

MAP L-AREA OIL CHEMICAL BASIN (BLDG. 904-83G)



NOTES: (1) = ACTIVE ANT MOUNDS ON SOIL COVER.  
APPLIED .5 lb ON EXTINGUISH ANT BAIT.

~~NO FURTHER ENTRIES~~

CAL - 9-7-18

# POST CLOSURE MAINTENANCE REGISTER

**Index Number**

**Unit Name**

96 L-AREA OIL / CHEMICAL BASIN - 904-83G

**Watershed** STEEL CREEK

AHA # NA  
 Work Order # NA  
 Work Group POST CLOSURE MAINTENANCE  
 Priority Medium  
 RCRA NO

<b>Maintenance Number</b>	PC-2018-00090	Maintenance Status	Complete
Inspection Date	9/7/2018	Chemical Type	Pesticide
Completion Date	9/7/2018	Chemical Name	Extinguish
		Amount Used	0.5 Pounds

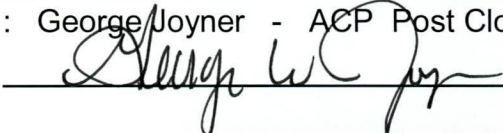
**Description Of Maintenance Item**  
Active ant mounds on waste unit

**Maintenance Item Corrected**  
Applied Extinguish pesticide

**Notes** New observation.

Approved by : George Joyner - ACP Post Closure Manager

Signature



Approval date :

10/8/18