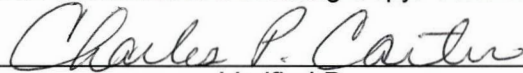


**ENVIRONMENTAL COMPLIANCE & AREA COMPLETION PROJECTS (EC&ACP) STANDARD
OPERATING PROCEDURES, VOL. I**
Manual: C3
Procedure: ER-IDS-019-035
Revision: 3
Effective Date: 06/02/2016
Type-Class: Form
Page: 1 of 3
**P REACTOR SEEPAGE BASIN OPERABLE UNIT (BLDGS. 904-61G, 904-62G AND 904-63G) FIELD
INSPECTION CHECKLIST**
WORKING COPY

This document is a Working Copy. Prior to start of work, verify this is the latest revision per the Procedure Index.



Verified By

12/14/2021

Date

CAUTION

The Inspector shall IMMEDIATELY notify the Post-Closure Manager and Environmental Compliance Authority if there has been a breach or compromise of the institutional controls of this waste unit. This notification shall be in accordance with Savannah River Site post-closure inspection procedures.

NOTE

1. Manual C3, ER-SOP-019, *Waste Unit Inspection and Maintenance*, shall be referred to for inspection details.
2. Monitoring wells associated with this waste unit are maintained in accordance with EC&ACP Monitoring Well Procedures.
3. Steps in this checklist may be completed concurrently or in any order.

 SCHEDULED
 UNSCHEDULED

A = Satisfactory X = Unsatisfactory (Explanation required)		A or X	Observation/Corrective Action Taken
1.	Verify roads are accessible.	A	
2.	Verify that the waste unit signs (8) are in acceptable condition, have the correct information and are legible from a distance of 25 feet.	A	
3.	Verify there is no unauthorized digging, excavation or construction activities on the soil cover.	A	

P Reactor Seepage Basin Operable Unit (Bldgs. 904-61G, 904-62G And 904-63G) Field Inspection Checklist

Manual: C3
 Procedure: ER-IDS-019-035
 Revision: 3
 Page: 2 of 3

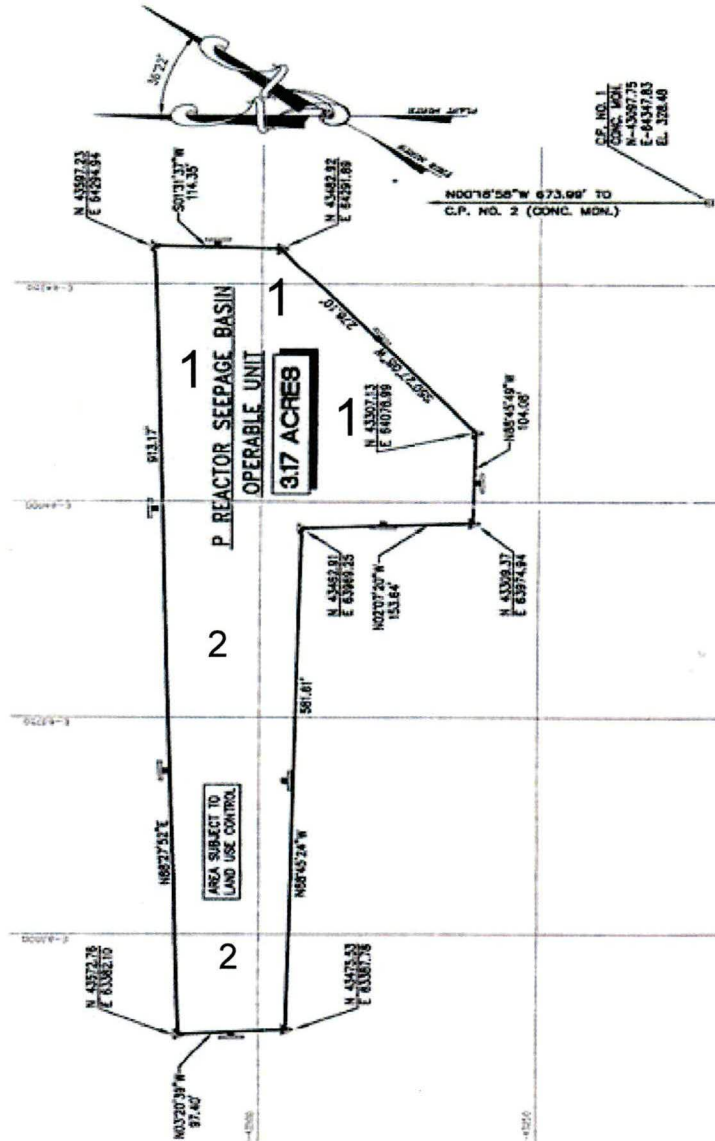
SCHEDULED UNSCHEDULED

A = Satisfactory X = Unsatisfactory (Explanation required)		A or X	Observation/Corrective Action Taken
4.	Check the integrity of drainage ditches for the presence of excessive erosion, sediment buildup, and any debris restricting water flow.	A	
5.	Verify that no woody vegetation is growing on the soil cover. Remove or identify as needed.	A	
6.	Visually check vegetative cover for grass density with no bare spots more than 3 feet by 3 feet in area. The height of the vegetation should not impair the visual inspection of the soil cover. This will be determined by the Inspector.	A	
7.	Check the closure cover for signs of erosion or depressions (subsidence).	A	
8.	Check for signs of burrowing animals.	X	Carry over item: Hogs Rooting on soil cover. See map note:1 Reference Maintenance Register: PC-2019-00108
9.	Visually perform a condition check of the survey benchmarks for damage and visibility.	A	
10.	Other Ant Mounds on Soil Cover	X	Active ant mounds on soil cover See map note:2 Reference Maintenance Register: PC-2021-00114

Inspected By		
Charles P. Carter <i>(Print Name)</i>	<i>Charles P. Carter</i> <i>(Signature)</i>	12/14/2021 <i>(Date)</i>

Review By Post-Closure Manager		
George W. Joyner <i>(Print Name)</i>	<i>George W. Joyner</i> <i>(Signature)</i>	12/16/21 <i>(Date)</i>

P REACTOR SEEPAGE BASIN (BLDGS. 904-61G,904-62G, 904-63G)



- NOTES:** 1=Carry over item: Hogs Rooting on soil cover. The USFS will repair with topsoil, grass seed, and wheat straw.
- 2=Active ant mounds on soil cover. Applied 2.0 lbs. of extinguish ant bait.

NO FURTHER ENTRIES

POST CLOSURE MAINTENANCE REGISTER

Index Number	Unit Name
317	P REACTOR SEEPAGE BASIN OPERABLE UNIT - 904-61G
318	P REACTOR SEEPAGE BASIN OPERABLE UNIT - 904-62G
319	P REACTOR SEEPAGE BASIN OPERABLE UNIT - 904-63G

Watershed STEEL CREEK

AHA # AHA-ER-5534
Work Order # NA
Work Group POST CLOSURE MAINTENANCE
Priority Medium
RCRA NO

Maintenance Number	PC-2021-00114	Maintenance Status	Complete
Inspection Date	12/14/2021	Chemical Type	Pesticide
Completion Date	12/14/2021	Chemical Name	Extinguish
		Amount Used	2.0 Pounds

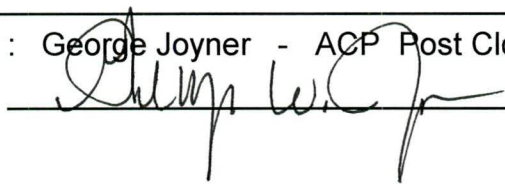
Description Of Maintenance Item
Active ant mounds on waste unit

Maintenance Item Corrected
Applied Extinguish pesticide

Notes New observation

Approved by : George Joyner - ACP Post Closure Manager

Signature



Approval date :

12/16/21