

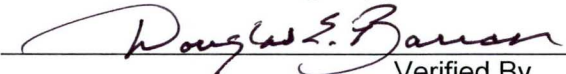
ENVIRONMENTAL COMPLIANCE & AREA COMPLETION PROJECTS (EC&ACP) STANDARD OPERATING PROCEDURES, VOL. I

Manual: C3
 Procedure: ER-IDS-019-024
 Revision: 6
 Effective Date: 01/22/2019
 Type-Class: Checklist
 Page: 1 of 3

FORD BUILDING SEEPAGE BASIN OPERABLE UNIT (BLDG. 904-91G) FIELD INSPECTION CHECKLIST

WORKING COPY

This document is a Working Copy. Prior to start of work, verify this is the latest revision per the Procedure Index.


 Verified By _____ Date 12/12/23

CAUTION

The Inspector shall IMMEDIATELY notify the Post-Closure Manager and Environmental Compliance Authority if there has been a breach or compromise of the institutional controls of this waste unit. This notification shall be in accordance with Savannah River Site post-closure inspection procedures.

NOTE

1. Manual C3, Vol. I, ER-SOP-019, Waste Unit Inspection and Maintenance, shall be referred to for inspection details.
2. Monitoring wells associated with this waste unit are maintained in accordance with EC&ACP monitoring well procedures.
3. Steps in this checklist may be completed concurrently or in any order.

SCHEDULED **UNSCHEDULED**

A = Satisfactory X = Unsatisfactory (Explanation required)	A or X	Observation/Corrective Action Taken
1. Verify roads are accessible.	A	
2. Verify waste unit signs (4) are in acceptable condition, have correct information and are legible from a distance of 25 feet.	A	
3. Verify there is no excavating, digging, or construction activity on soil cover.	A	

Manual: C3
 Procedure: ER-IDS-019-024
 Revision: 6
 Page: 2 of 3

Ford Building Seepage Basin Operable Unit (Bldg. 904-91G) Field Inspection Checklist

SCHEDULED UNSCHEDULED

A = Satisfactory		A or X	Observation/Corrective Action Taken
X = Unsatisfactory (Explanation required)			
4.	Verify no woody vegetation is growing on the soil cover. Remove or identify as needed.	A	
5.	Visually check vegetative cover for grass density with no bare spots more than 3 feet by 3 feet in the area. The height of vegetation should not impair visual inspection of the soil cover. This will be determined by the Inspector.	A	
6.	Check soil cover for signs of erosion or depressions (subsidence).	A	
7.	Check for signs of burrowing animals.	A	
8.	Other	NO FURTHER ENTRIES	

DEB 12/12/2023

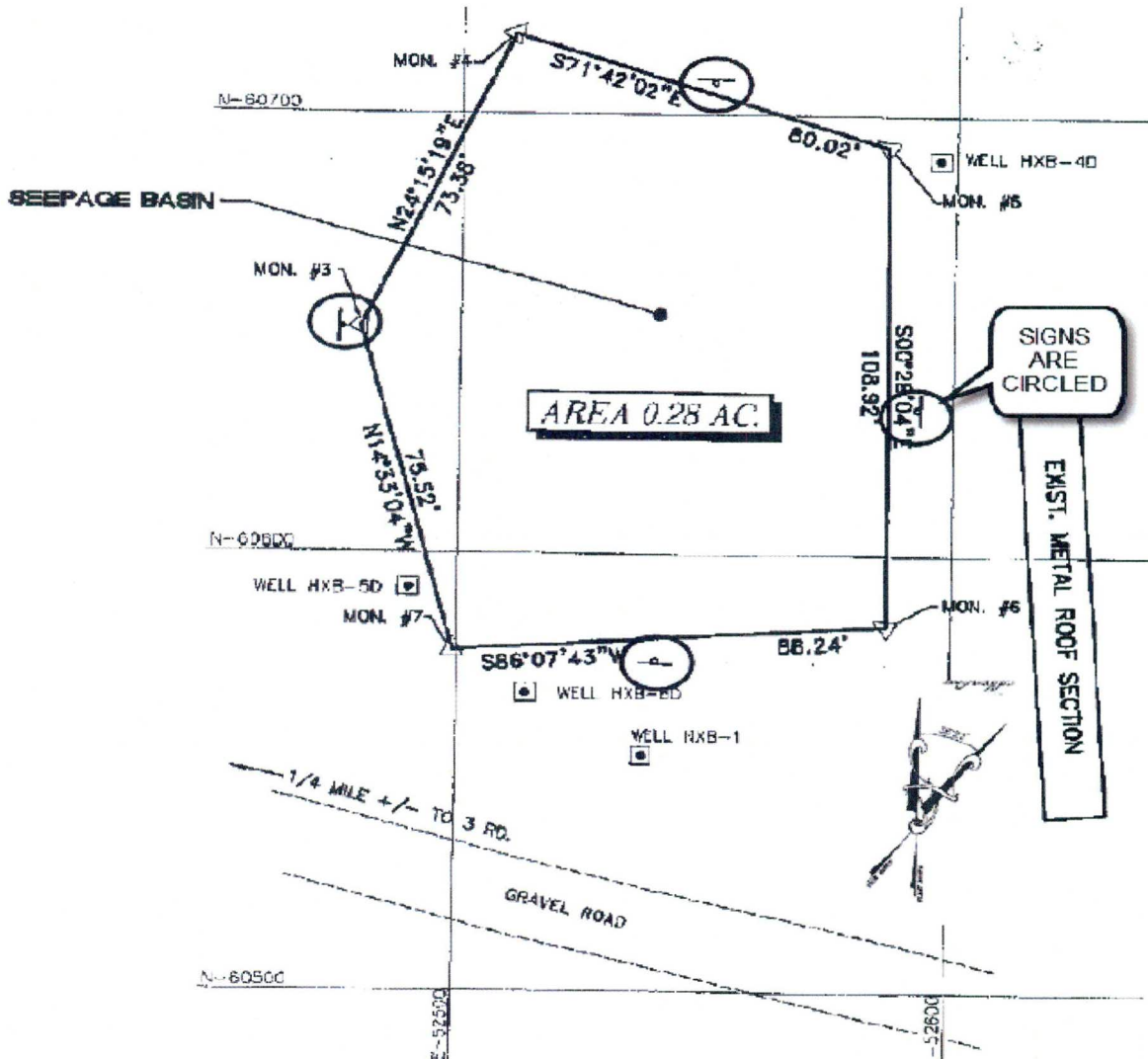
Inspected By		
Douglas E. Barron	<i>Douglas E. Barron</i>	12/12/23
Print Name	Signature	Date

Review By Post-Closure Manager		
Brian Hanshew	<i>BH</i>	12/18/2023
Print Name	Signature	Date

Ford Building Seepage Basin Operable Unit (Bldg. 904-91G)
Field Inspection Checklist

Manual: C3
Procedure: ER-IDS-019-024
Revision: 6
Page: 3 of 3

Map of Ford Building Seepage Basin Operable Unit (Bldg. 904-91G)



NOTES:

NO ENTRIES THIS PAGE

DEB 12/12/2023