

**ENVIRONMENTAL COMPLIANCE & AREA COMPLETION PROJECTS (EC&ACP) STANDARD
OPERATING PROCEDURES, VOL. I**
Manual: C3
Procedure: ER-IDS-019-030
Revision: 6
Effective Date: 12/21/2021
Type-Class: Checklist
Page: 1 of 3
P-AREA BURNING RUBBLE PIT (BLDG. 131-P) FIELD INSPECTION CHECKLIST
WORKING COPY

This document is a Working Copy. Prior to start of work, verify this is the latest revision per the Procedure Index.

Bronson Heise

Verified By

12/13/24

Date

CAUTION

The Inspector is required to IMMEDIATELY notify the Post-Closure Manager and Environmental Compliance Authority if there has been a breach or compromise of the institutional controls of this waste unit. This notification is required to be in accordance with Savannah River Site post-closure inspection procedures.

NOTE

1. Manual C3, Volume I, Procedure ER-SOP-019, Waste Unit and IOU Inspection and Maintenance, is referenced for inspection details.
2. Monitoring wells associated with this waste unit are maintained in accordance with Environmental Compliance & Area Completion Projects monitoring well procedures.
3. Steps in this checklist may be completed concurrently or in any order.

 SCHEDULED

 UNSCHEDULED


A = Satisfactory X = Unsatisfactory (Explanation required)		A or X	Observation/Corrective Action Taken
1.	VERIFY roads to waste unit are accessible.	A	
2.	VERIFY waste unit signs (4) are in acceptable condition, have correct information, and are legible from a distance of 25 feet.	A	

P-Area Burning Rubble Pit (Bldg. 131-P) Field Inspection Checklist

Manual: C3
 Procedure: ER-IDS-019-030
 Revision: 6
 Page: 2 of 3

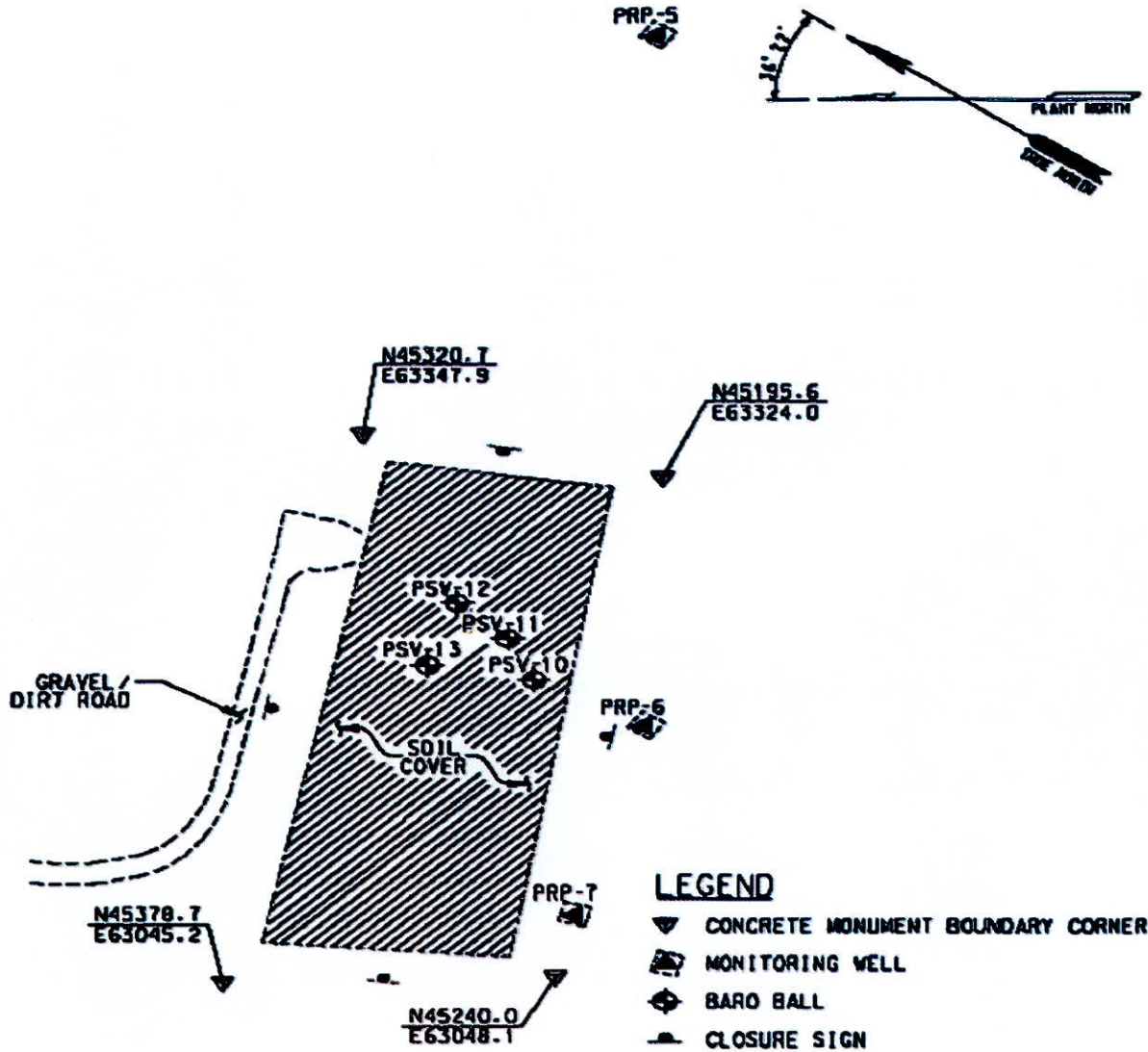
SCHEDULED UNSCHEDULED

A = Satisfactory X = Unsatisfactory (Explanation required)	A or X	Observation/Corrective Action Taken
3. VERIFY there are no unauthorized excavations, digging, or construction activities on soil cover.	A	
4. CHECK integrity of drainage ditches for presence of excessive erosion, sediment build-up, and any debris restricting water flow.	A	
5. VERIFY no woody vegetation is growing on soil cover, AND REMOVE OR IDENTIFY as needed.	A	
6. VISUALLY CHECK vegetative cover for grass density with no bare spots more than 3 feet by 3 feet in area. (The height of vegetative cover should not impair visual inspection of soil cover. This will be determined by the Inspector.)	A	
7. CHECK soil cover for signs of erosion or depressions (subsidence).	A	
8. CHECK for evidence of burrowing animals.	A	
9. Other.	A	none.

Inspected By		
Brunson Heise <small>(Print Name)</small>	 <small>(Signature)</small>	12/13/24 <small>(Date)</small>

Reviewed By Post-Closure Manager		
BRIAN HANSHAW <small>(Print Name)</small>	 <small>(Signature)</small>	12/19/2024 <small>(Date)</small>

Map of P-Area Burning Rubble Pit



NOTES: None.
