

**ENVIRONMENTAL COMPLIANCE & AREA COMPLETION PROJECTS (EC&ACP) STANDARD  
OPERATING PROCEDURES, VOL. I**
**Manual: C3**  
**Procedure: ER-IDS-019-040**  
**Revision: 5**  
**Effective Date: 9/19/2019**  
**Type-Class: Checklist**  
**Page: 1 of 7**
**LOWER THREE RUNS INTEGRATOR OPERABLE UNIT FOR FOUR PUBLIC ROAD CROSSING  
BETWEEN PATTERSON MILL ROAD AND SAVANNAH RIVER FIELD INSPECTION CHECKLIST**
**WORKING COPY**

This document is a Working Copy. Prior to start of work, verify this is the latest revision per the Procedure Index.

*Charles P. Carter*

Verified By

03/30/2022

Date

**CAUTION**

The Inspector shall IMMEDIATELY notify the Post-Closure Manager and Environmental Compliance Authority if there has been a breach or compromise of the institutional controls of this waste unit. This notification shall be in accordance with Savannah River Site post-closure inspection procedures.

**NOTE**

1. Manual C3, Vol. ER-SOP-019, Waste Unit Inspection and Maintenance shall be referred to for inspection details.
2. Steps in this checklist may be completed concurrently or in any order.

**SCHEDULED**

**UNSCHEDULED**

<b>A = Satisfactory</b> <b>X = Unsatisfactory (Explanation required)</b>		A or X	Observation/Corrective Action Taken
1.	Verify signs at four public road crossings for a distance of 1200 feet in each direction on both sides of Land Use Control (LUC) boundary are in acceptable condition, have correct information, and are legible ( <b>REFER TO</b> pages 3 to 7).	<b>A</b>	

**Lower Three Runs Integrator Operable Unit For Four Public Road Crossing Between Patterson Mill Road and Savannah River Field Inspection Checklist**

Manual: C3  
 Procedure: ER-IDS-019-040  
 Revision: 5  
 Page: 2 of 7

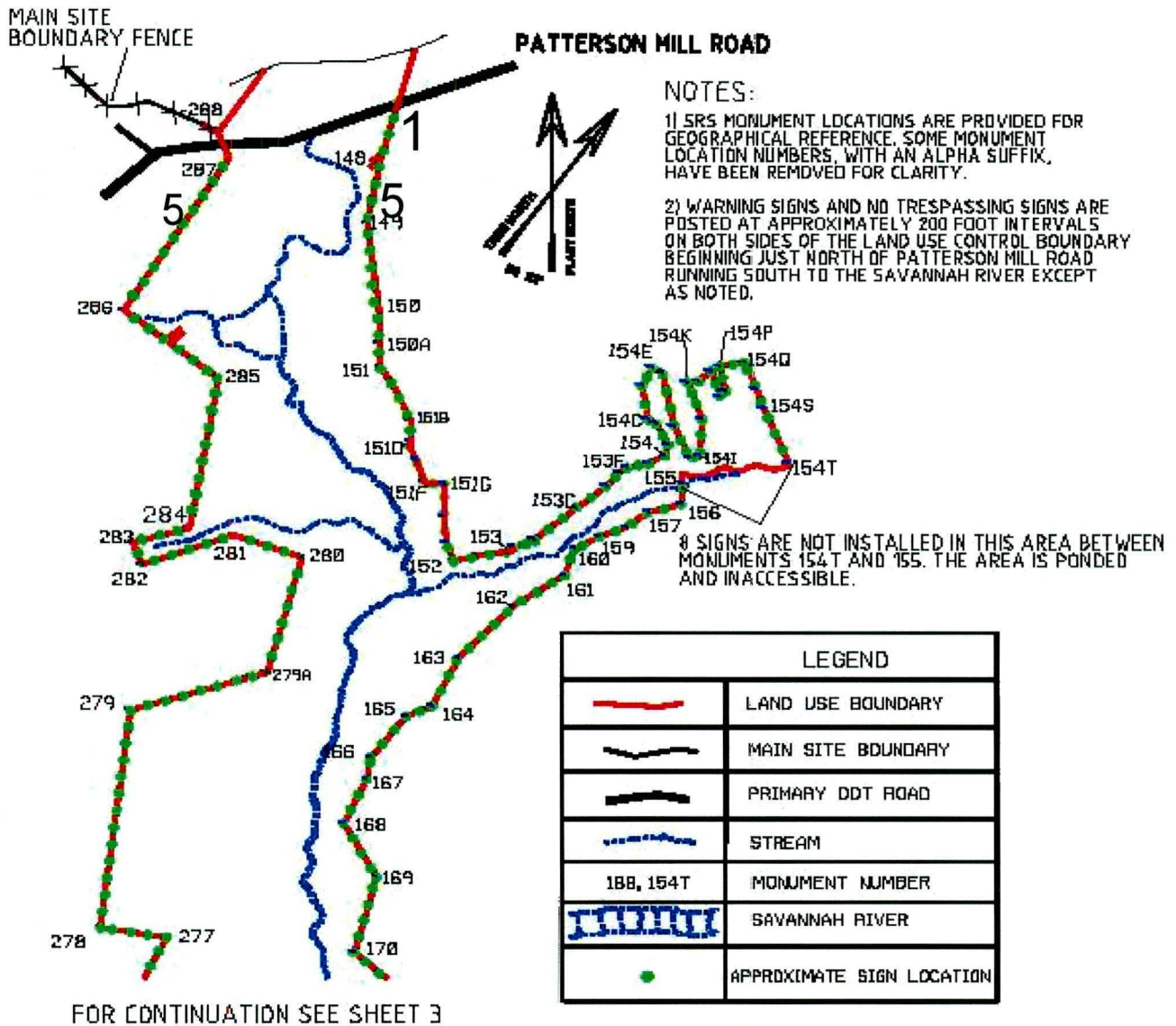
SCHEDULED                       UNSCHEDULED

<b>A = Satisfactory</b> <b>X = Unsatisfactory (Explanation required)</b>	<b>A or X</b>	<b>Observation/Corrective Action Taken</b>
<b>2.</b> Verify fences at four public road crossings within limit of inspection, 1200 feet in each way on both sides of LUC boundary are in acceptable condition ( <b>REFER TO</b> pages 3 - 7).	<b>X</b>	Carry over item: Broken fences at Patterson Mill Road, Boiling Springs Road, Rocky Point Road and Highway 125 crossings. See Map Notes: 1, 2, 3 and 4. Ref. Maint Register IOU-2021-00001  Carry over item: Vegetation along the fence lines at Patterson Mill Road, Boiling Springs Road, Rocky Point Road and Highway 125 need cutting. See Map note: 5, 6, 7 and 8 Reference Maintenance Register: IOU-2021-00003
<b>3.</b> Document and provide appropriate notification of location of any evidence of trespassing within the limits of the inspection.	<b>A</b>	
<b>4.</b> Verify there are no unauthorized structures (e.g., deer stand, rope swings) within limits of inspection.	<b>A</b>	
<b>5.</b> Other	NO FURTHER ENTRIES	CPC 03/30/2022

Inspected By		
Charles P. Carter <i>(Print Name)</i>	<i>Charles P. Carter</i> <i>(Signature)</i>	03/30/2022 <i>(Date)</i>

Review By Post-Closure Manager		
George W. Joyner <i>(Print Name)</i>	<i>George W. Joyner</i> <i>(Signature)</i>	4/28/22 <i>(Date)</i>

Map for LTR IOU Lower Sub-Unit at Four Public Road Crossing  
 Page 1 of 5



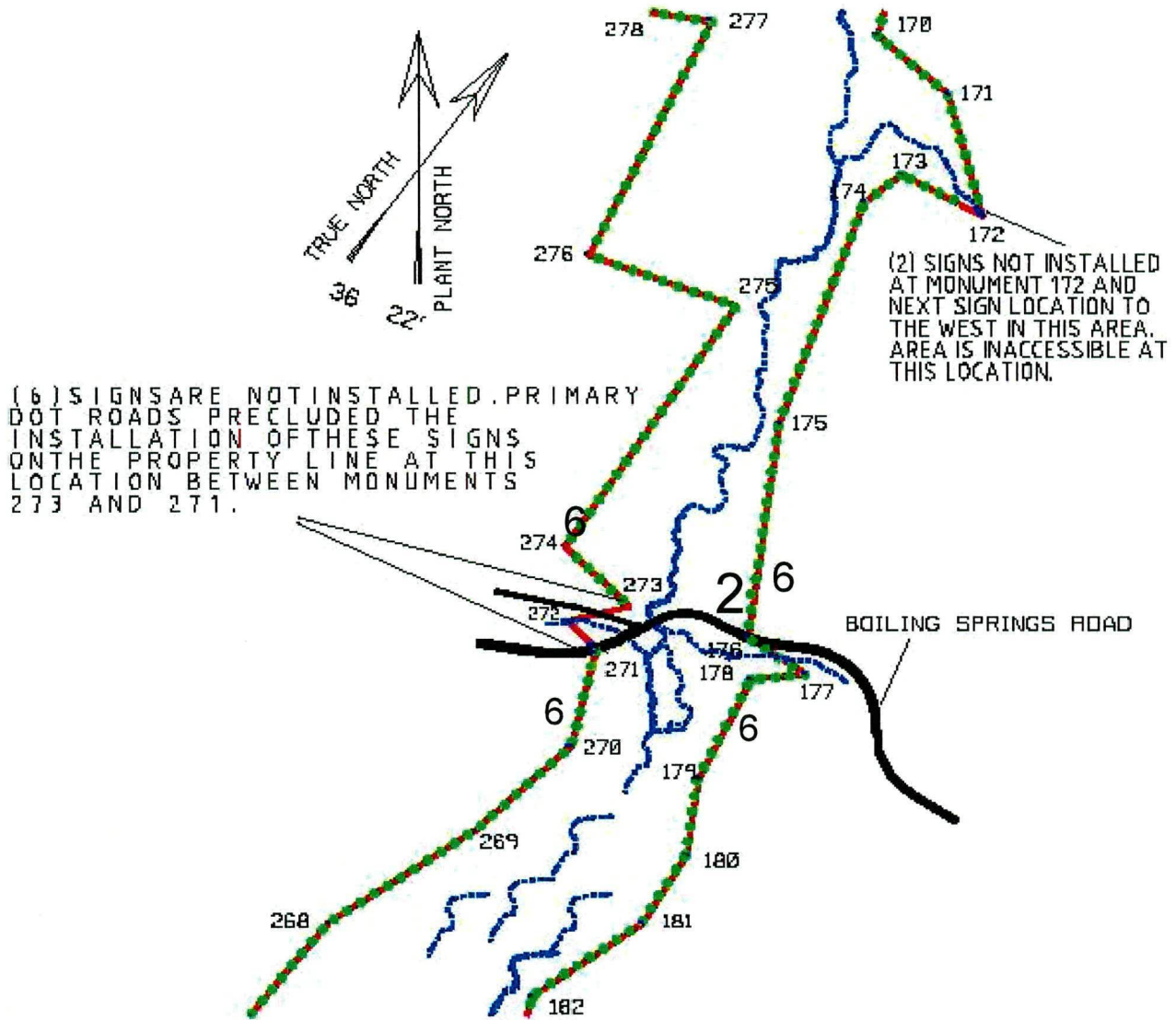
**NOTES:** 1= Carry over item: Broken fence. The United States Forest Service will make fence repairs.

5= Carry over item: Vegetation along fence lines need cutting. USFS will cut vegetation.

NO FURTHER ENTRIES

Map for LTR IOU Lower Sub-Unit at Four Public Road Crossing  
Page 2 of 5

CONTINUATION FROM SHEET 2



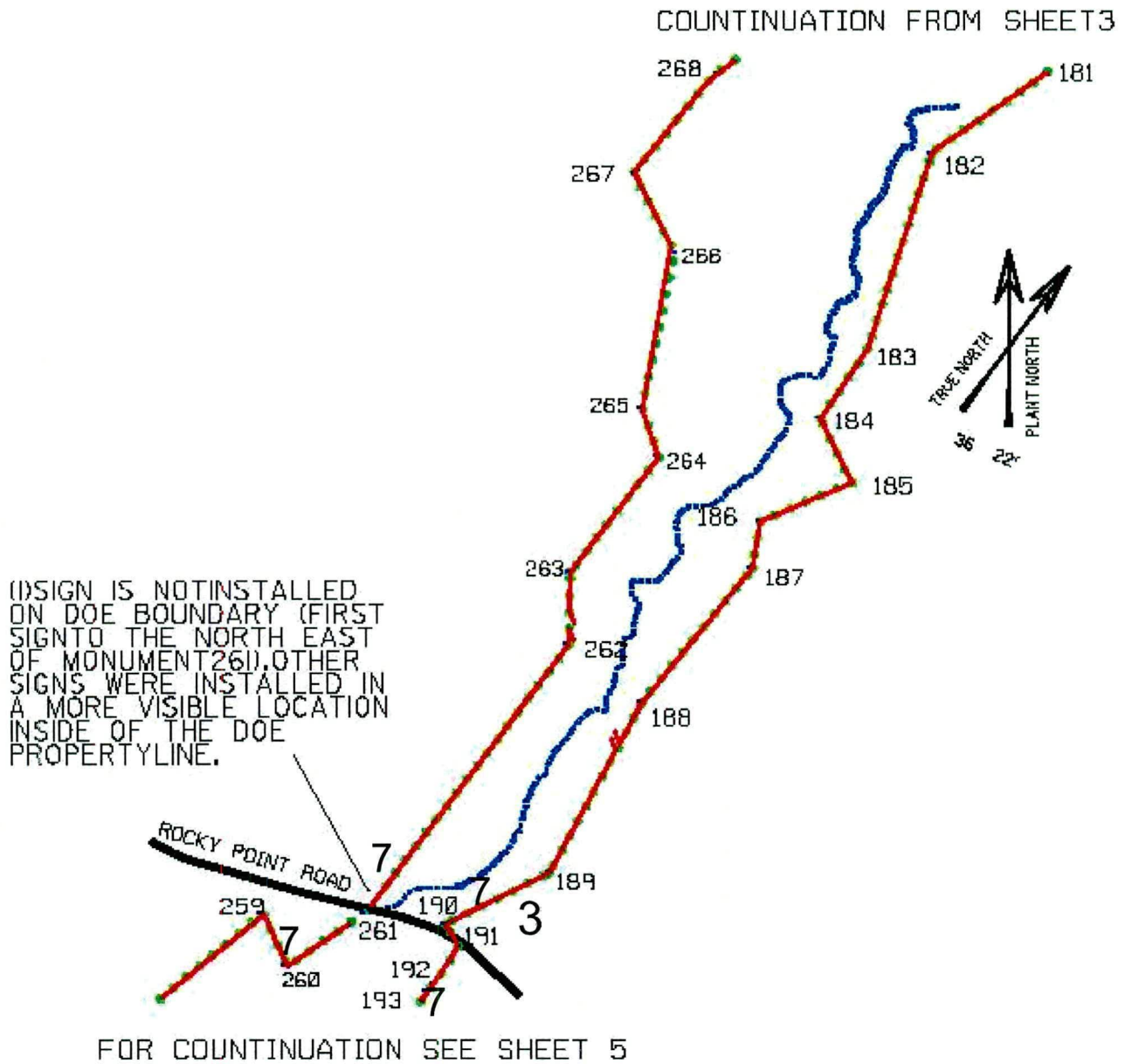
FOR CONTINUATION SEE SHEET 4

**NOTES:** 2=Carry over item: Broken fence. The United States Forest Service will make fence repairs.

6=Carry over item: Vegetation along fence lines need cutting. USFS will cut vegetation

NO FURTHER ENTRIES

Map for LTR IOU Lower Sub-Unit at Four Public Road Crossing  
Page 3 of 5

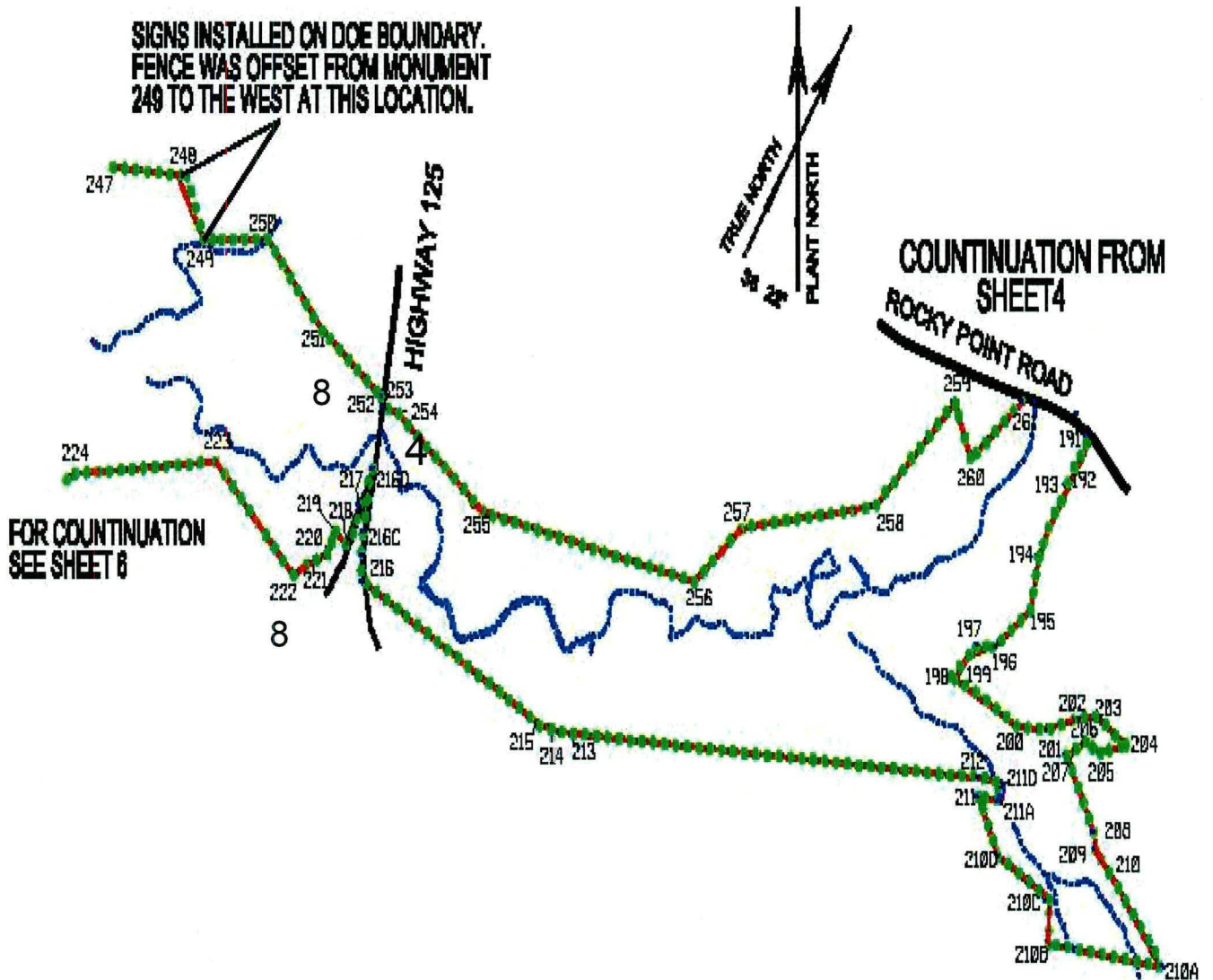


**NOTES:** 3=Carry over item: Broken fence. The United States Forest Service will make fence repairs

7=Carry over item: Vegetation along fence lines need cutting. USFS will cut vegetation

~~NO FURTHER ENTRIES~~

Map for LTR IOU Lower Sub-Unit at Four Public Road Crossing  
Page 4 of 5

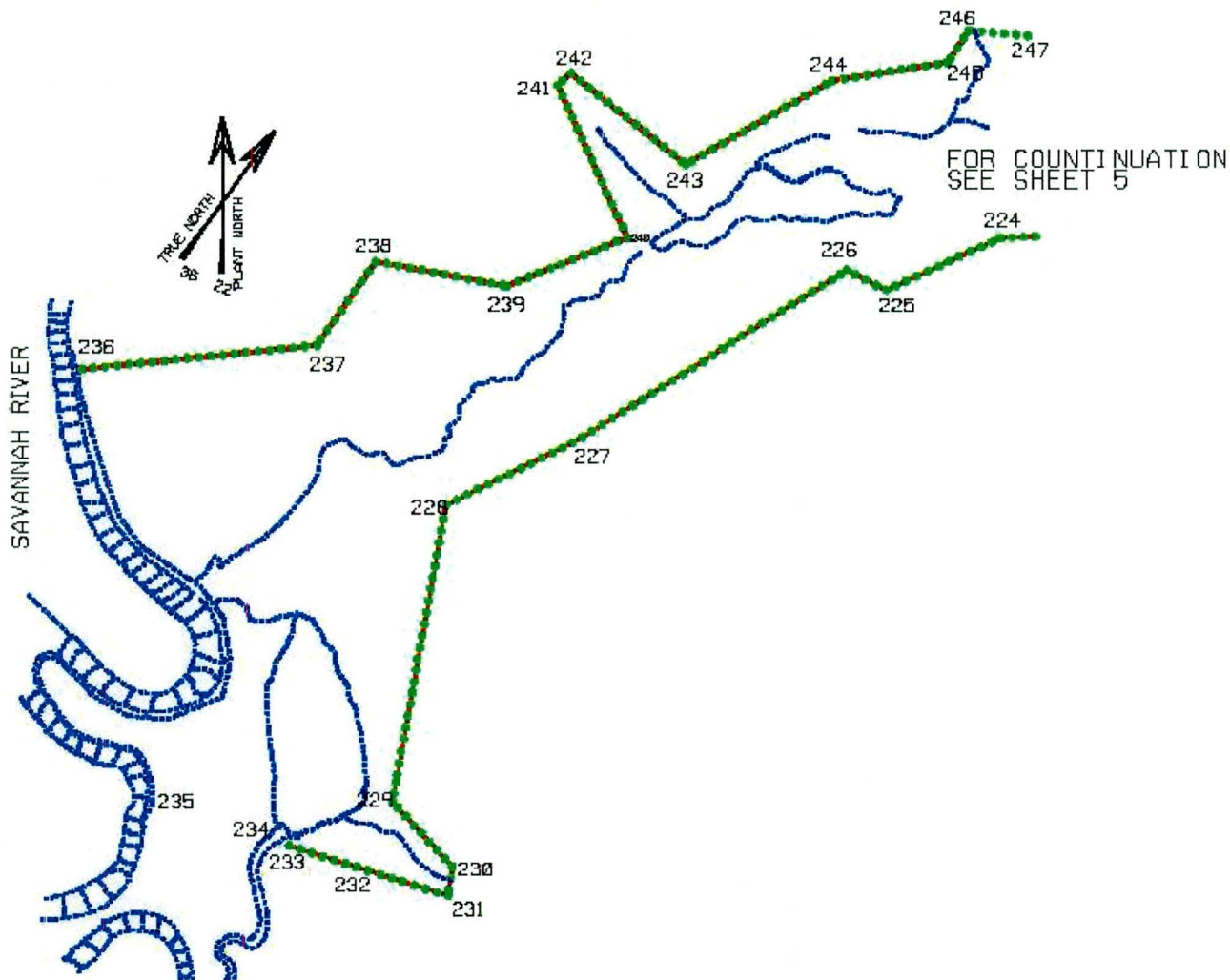


NOTES: 4=Carry over item: Broken fence. The United States Forest Service will make fence repairs

8=Carry over item: Vegetation along fence lines need cutting. USFS will cut vegetation

NO FURTHER ENTRIES

Map for LTR IOU Lower Sub-Unit at Four Public Road Crossing  
Page 5 of 5



NOTES:

NO ENTRIES THIS PAGE