

**ENVIRONMENTAL COMPLIANCE & AREA COMPLETION PROJECTS (EC&ACP) STANDARD
OPERATING PROCEDURES, VOL. I**

Manual: C3
 Procedure: ER-IDS-019-026
 Revision: 5
 Effective Date: 04/19/2022
 Type-Class: Checklist
 Page: 1 of 3

**R-BINGHAM PUMP OUTAGE PIT AND UNKNOWN PITS OPERABLE UNIT FIELD INSPECTION
CHECKLIST**

WORKING COPY

This document is a Working Copy. Prior to start of work, verify this is the latest revision per the Procedure Index.

Donny Sahm
 Verified By

08/17/2024

Date

CAUTION

The Inspector is required to IMMEDIATELY notify the Post-Closure Manager and Environmental Compliance Authority if there has been a breach or compromise of the institutional controls of this waste unit. This notification is in accordance with Savannah River Site post-closure inspection procedures.

NOTE

1. Manual C3, Volume 1, Procedure ER-SOP-019, Waste Unit and IOU Inspection and Maintenance, is referenced for inspection details.
2. Monitoring wells associated with this waste unit are maintained in accordance with Environmental Compliance and Area Completion Projects Monitoring Well Procedures.
3. Steps in this checklist may be completed concurrently or in any order.

SCHEDULED

UNSCHEDULED

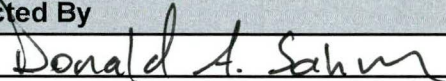
A = Satisfactory X = Unsatisfactory (Explanation required)		A or X	Observation/Corrective Action Taken
1.	VERIFY roads to waste unit are accessible.	A	
2.	VERIFY that the waste unit signs (4) are in acceptable condition, have the correct information and are legible from a distance of 25 feet.	A	

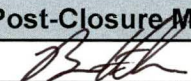
R-Bingham Pump Outage Pit and Unknown Pits Operable Unit Field Inspection Checklist

Manual: C3
 Procedure: ER-IDS-019-026
 Revision: 5
 Page: 2 of 3

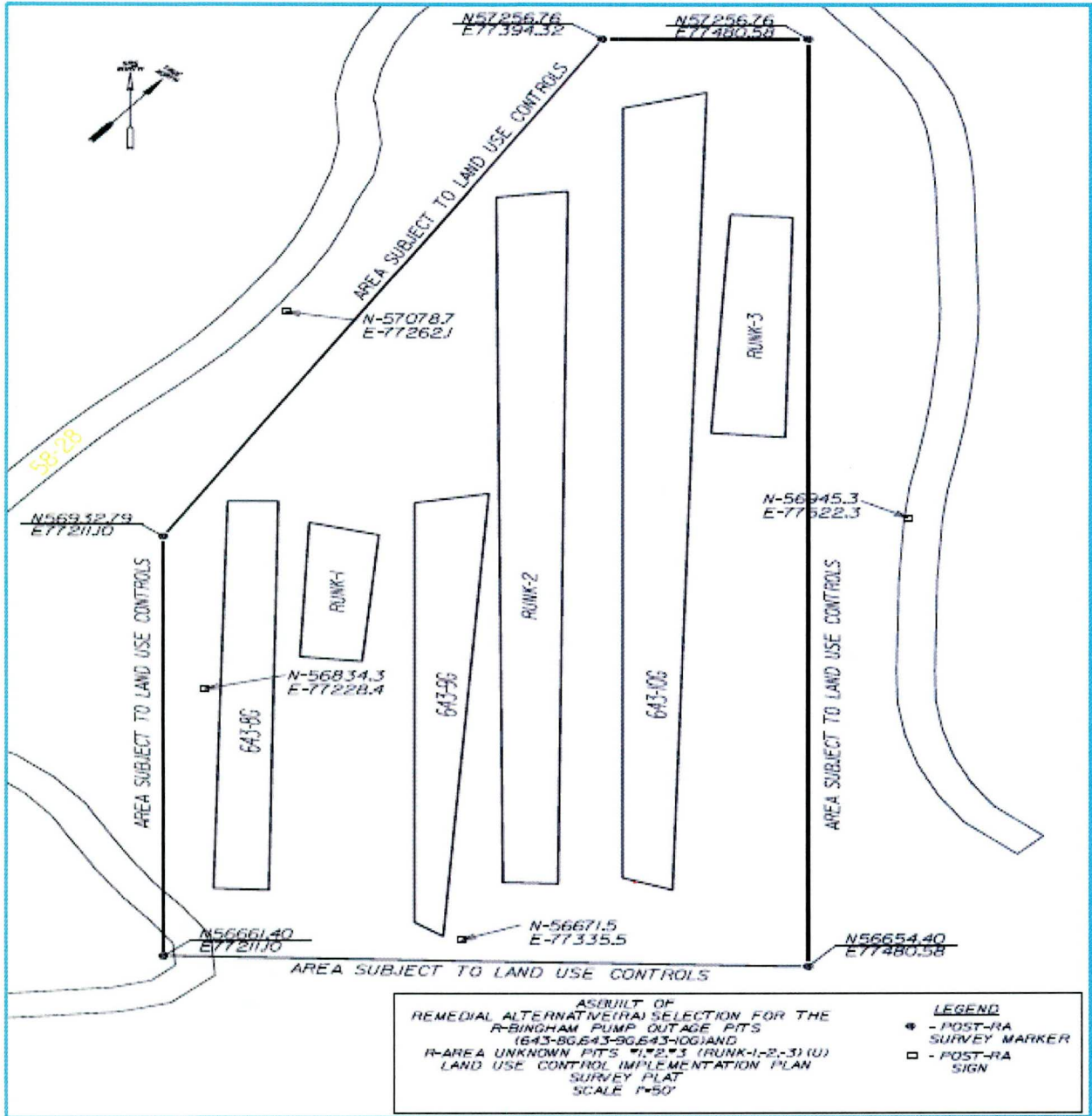
SCHEDULED UNSCHEDULED

A = Satisfactory X = Unsatisfactory (Explanation required)		A or X	Observation/Corrective Action Taken
3.	VERIFY there is no unauthorized digging, excavation, or construction activities on the soil cover.	A	
4.	VERIFY that no woody vegetation is growing on the existing cleared areas of the soil cover, AND REMOVE OR IDENTIFY as needed.	A	
5.	Visually CHECK vegetative cover for grass density with no bare spots more than 3 feet by 3 feet in area. (The height of the vegetation should not impair the visual inspection of the soil cover. This will be determined by the Inspector.)	A	
6.	CHECK the soil cover for signs of erosion or depressions (subsidence).	A	
7.	CHECK for signs of burrowing animals.	A	
8.	Other None	A	

Inspected By		
Donald A. Sahn <i>(Print Name)</i>	 <i>(Signature)</i>	08/17/2024 <i>(Date)</i>

Reviewed By Post-Closure Manager		
Brian Hanshew <i>(Print Name)</i>	 <i>(Signature)</i>	8-27-24 <i>(Date)</i>

MAP R-BINGHAM PUMP OUTAGE PITS (643-8G, 643-9G AND 643-10G) AND R-AREA
UNKNOWN PITS 1, 2 & 3 (RUNK 1, 2, & 3)



NOTES: Referenced Procedure: ER-SOP-019, 5.1 to perform an
 unscheduled inspection.

No further entries

DAS 8/27/24