

**ENVIRONMENTAL COMPLIANCE & AREA COMPLETION PROJECTS (EC&ACP) STANDARD
OPERATING PROCEDURES, VOL. I**
**M-AREA HAZARDOUS WASTE MANAGEMENT FACILITY (BLDG. 904-51G) FIELD INSPECTION
CHECKLIST**

Manual: C3
 Procedure: ER-IDS-019-022
 Revision: 3
 Effective Date: 06/01/2016
 Type-Class: Form
 Page: 1 of 5

WORKING COPY

This document is a Working Copy. Prior to start of work, verify this is the latest revision per the Procedure Index.

Charles P. Carter
 Verified By

11-12-18
 Date

CAUTION

The Inspector shall IMMEDIATELY notify the Post-Closure Manager and Environmental Compliance Authority if there has been a breach or compromise of the institutional controls of this waste unit. This notification shall be in accordance with Savannah River Site post-closure inspection procedures.

NOTE

1. Manual C3, ER-SOP-019, *Waste Unit Inspection and Maintenance*, shall be referred to for inspection details.
2. Monitoring wells associated with this waste unit are maintained in accordance with EC&ACP monitoring well procedures.
3. Steps in this checklist may be completed concurrently or in any order.
4. Unsatisfactory conditions found during the inspection may be listed on the detailed map of the inspected area.

SCHEDULED

UNSCHEDULED

A = Satisfactory X = Unsatisfactory (Explanation required)		A or X	Observation/Corrective Action Taken
1.	Verify roads to waste unit are accessible.	X	OVER HANGING TREE LIMBS ON THE NORTH EAST SIDE NEEDS TRIMMING, SEE MAP NOTE (D). REF. MAINT. REGISTER PC-2018-00119
2.	Verify fence, posts, and gates that surround M-Area Settling Basin are intact, in good condition, and unattended gates are locked.	A	

M-Area Hazardous Waste Management Facility (Bldg. 904-51G) Field Inspection Checklist

 SCHEDULED

 UNSCHEDULED

A = Satisfactory X = Unsatisfactory (Explanation required)	A or X	Observation/Corrective Action Taken
3. Verify M-Area Settling Basin signs (10) and postings are in acceptable condition, have correct information, and are legible from a distance of 25 feet.	A	
4. Check integrity of drainage ditches, drain pipes and general area (including the drainage ditch to Lost Lake) for presence excessive erosion, sediment buildups any debris restricting water flow.	X	DRAINAGE PIPE AT THE HEAD OF THE DITCH GOING TO LOST LAKE NEEDS SEDIMENT REMOVED. SEE MAP NOTE: (2) REF. MAINT. REGISTER - PL-2018-00120
5. Check the soil cover for signs of erosion, abnormal soil cracks, depressions (subsidence) or physical impacts.	A	
6. Visually check vegetative cover of M-Area Settling Basin for grass density, with no bare spots more than 3 feet by 3 feet in area and large weeds or woody vegetation on capped area. (The height of the vegetative cover should not impair the visual inspection of the soil cover. This will be determined by the Inspector.)	A	
7. Check for excessive vegetation growing over fences, which may obstruct warning signs or visibility of inspected area.	A	
8. Check M-Settling Basin cover for signs of burrowing animals.	X	ACTIVE ANT MOUNDS ON SOIL COVER. SEE MAP NOTE: (3) REF. MAINT REGISTER - PL-2018-00121
9. Check side slopes for slumping and any observable signs of subsidence/depressions.	A	
10. Inspect ditches for standing water, excessive vegetation and debris.	A	
11. Verify annual Topographic/Subsidence Survey has been done for current calendar year.	A	SURVEY COMPLETE 5-29-2018
12. Verify copies of survey results are in EC&ACP Document Control Center.	A	

M-Area Hazardous Waste Management Facility (Bldg. 904-51G) Field Inspection Checklist

Manual: C3
 Procedure: ER-IDS-019-022
 Revision: 3
 Page: 3 of 5

 SCHEDULED

 UNSCHEDULED

A = Satisfactory X = Unsatisfactory (Explanation required)	A or X	Observation/Corrective Action Taken
13. Check around Lost Lake for evidence of any unauthorized activity in immediate area.	A	
14. Ensure benchmark is visible and not damaged.	A	
15. Other		
NO FURTHER ENTRIES		CPL 11-12-18

Inspected By		
CHARLES P. CARTER (Print Name)	Charles P. Carter (Signature)	11-12-18 (Date)

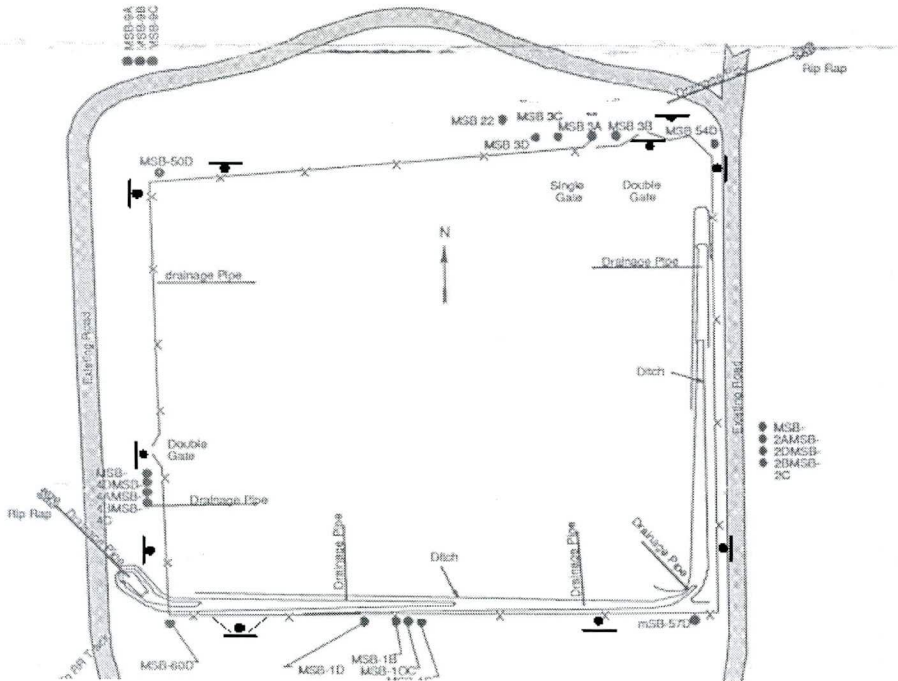
Review By Post-Closure Manager		
George W Joyner (Print Name)	George W Joyner (Signature)	12/3/18 (Date)

M-Area Hazardous Waste Management Facility (Bldg. 904-51G) Field Inspection Checklist

Manual: C3
 Procedure: ER-IDS-019-022
 Revision: 3
 Page: 4 of 5

Map of M-Area Hazardous Waste Management Facility 904-51G

Coordinates - N5-W7



• Waste Unit Signs
 / Access Gate

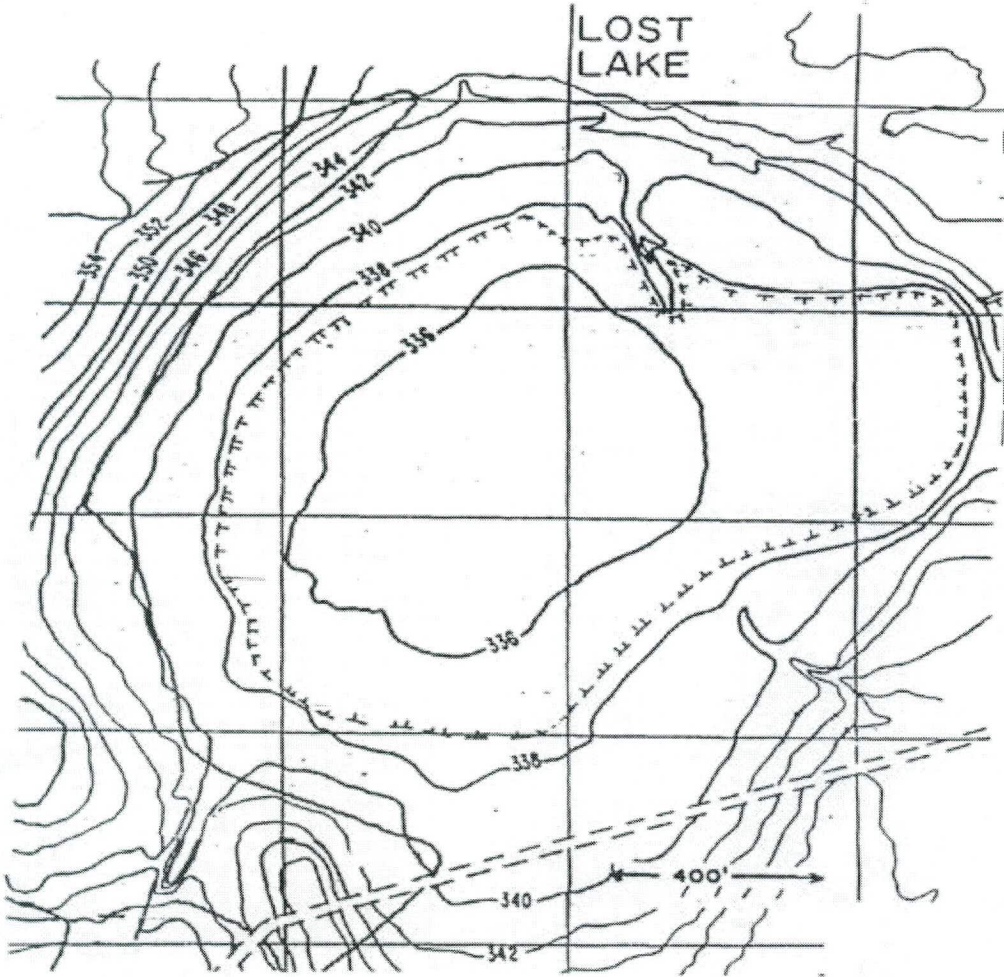
NOTES: (1) = OVER HANGING TREE LIMBS ON THE NORTH SIDE (EAST) NEEDS TRIMMING. USFS WILL TRIM LIMBS. (2) = DRAINAGE PIPE AT THE HEAD OF THE DITCH GOING TO LOST LAKE NEEDS SEDIMENT REMOVED. USFS WILL REMOVE SEDIMENT. (3) = ACTIVE ANT MOUNDS ON SOIL COVER. APPLIED 2.0 LBS OF EXTINGUISH ANT BAIT.

CPL 11-12-18

M-Area Hazardous Waste Management Facility (Bldg. 904-51G) Field Inspection Checklist

Manual: C3
Procedure: ER-IDS-019-022
Revision: 3
Page: 5 of 5

Map of M-Area Hazardous Waste Management Facility (Lost Lake)



NOTES:

~~NO ENTRIES THIS PAGE~~

CPL 11.12.18

POST CLOSURE MAINTENANCE REGISTER

Index Number
Unit Name

13 M-AREA HAZARDOUS WASTE MANAGEMENT FACILITY (M-AREA SETTLING BASIN - 904-51G)

Watershed UPPER THREE RUNS

AHA # NA
 Work Order # NA
 Work Group POST CLOSURE MAINTENANCE
 Priority Medium
 RCRA YES

Maintenance Number	PC-2018-00121	Maintenance Status	Complete
Inspection Date	11/12/2018	Chemical Type	NA
Completion Date	11/12/2018	Chemical Name	Extinguish
		Amount Used	2.0 Pounds

Description Of Maintenance Item

Active ant mounds on soil cover

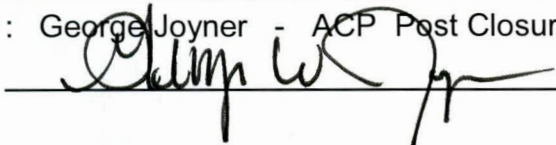
Maintenance Item Corrected

Applied Extinguish ant bait.

Notes New observation.

Approved by : George Joyner - ACP Post Closure Manager

Signature



Approval date :

12/3/18

POST CLOSURE MAINTENANCE REGISTER

Index Number
Unit Name

13 M-AREA HAZARDOUS WASTE MANAGEMENT FACILITY (M-AREA SETTLING BASIN - 904-51G)

Watershed UPPER THREE RUNS

AHA #

Work Order # N/A

Work Group USFS

Priority Medium

RCRA YES

Maintenance Number PC-2018-00120

Maintenance Status Complete

Inspection Date 11/12/2018

Chemical Type NA

Completion Date 1/7/2019

Chemical Name

Amount Used

Description Of Maintenance Item

Drainage pipe at the head of the drianage ditch going to Lost Lake needs sediment removed.

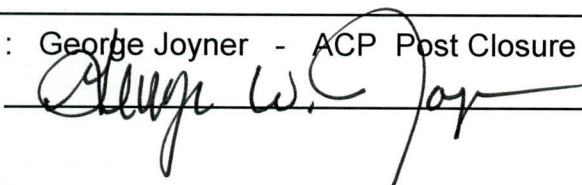
Maintenance Item Corrected

USFS removed sediment

Notes New observation

Approved by : George Joyner - ACP Post Closure Manager

Signature



Approval date :

1/24/19

POST CLOSURE MAINTENANCE REGISTER

Index Number
Unit Name

13 M-AREA HAZARDOUS WASTE MANAGEMENT FACILITY (M-AREA SETTLING BASIN - 904-51G)

Watershed UPPER THREE RUNS

AHA #

Work Order # N/A

Work Group USFS

Priority Medium

RCRA YES

Maintenance Number PC-2018-00119

Maintenance Status Complete

Inspection Date 11/12/2018

Chemical Type NA

Completion Date 1/7/2019

Chemical Name

Amount Used

Description Of Maintenance Item

Over hanging tree limbs on the Northeast side of roadway needs trimming.

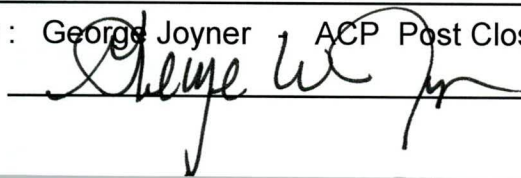
Maintenance Item Corrected

USFS trimmed over hanging limbs

Notes New observation

Approved by : George Joyner ACP Post Closure Manager

Signature



Approval date :

2/19/19