

108522

**ENVIRONMENTAL COMPLIANCE & AREA COMPLETION PROJECTS (EC&ACP) STANDARD
OPERATING PROCEDURES, VOL. I**
Manual: C3
Procedure: ER-IDS-019-051
Revision: 2
Effective Date: 06/01/2016
Type-Class: Form
Page: 1 of 3
R-AREA OPERABLE UNIT ASH BASIN 188-R FIELD INSPECTION CHECKLIST
WORKING COPY

This document is a Working Copy. Prior to start of work, verify this is the latest revision per the Procedure Index.

Charles P. Carter
 Verified By

12-13-17
 Date

CAUTION

The Inspector shall IMMEDIATELY notify the Post-Closure Manager and Environmental Compliance Authority if there has been a breach or compromise of the institutional controls of this waste unit. This notification shall be in accordance with Savannah River Site post-closure inspection procedures.

NOTE

1. Manual C3, ER-SOP-019, *Waste Unit Inspection and Maintenance*, shall be referred to for inspection details.
2. Steps in this checklist may be completed concurrently or in any order.


SCHEDULED

UNSCHEDULED

A = Satisfactory X = Unsatisfactory (Explanation required)		A or X	Observation/Corrective Action Taken
1.	Verify roads are accessible.	A	
2.	Verify waste unit warning signs (10) are in acceptable condition, have correct information, and are legible from a distance of 25 feet.	A	
3.	Check survey boundary monuments for damage and visibility.	A	

R-Area Operable Unit Ash Basin 188-R Field Inspection Checklist

Manual: C3
 Procedure: ER-IDS-019-051
 Revision: 2
 Page: 2 of 3

 SCHEDULED

 UNSCHEDULED

A = Satisfactory X = Unsatisfactory (Explanation required)	A or X	Observation/Corrective Action Taken
4. Visually check vegetative cover for grass density with bare spots no more than 3 feet by 3 feet. No woody vegetation is growing on basin cover. Remove or identify as needed. The height of vegetation cover should not impair visual inspection of closure. This will be determined by the EC&ACP Post Closure Inspector.	A	
5. Verify R-Area Ash Basin soil cover has no signs of unacceptable erosion (subsidence).	A	
6. Check integrity of drainage ditches, catch basin, grating inlet for presence of excessive erosion, sediment build-up, and any debris restricting water flow.	X	DRAINAGE DITCH ON THE NORTHWEST CORNER NEEDS VEGETATION AND DEBRIS REMOVED. SEE MAP NOTE (D). REF. MAINT. REGISTER PL-2017-00113
7. Verify signs of burrowing or mounding animals are not present on basin cover.	X	ACTIVE ANT MOUNDS ON SOIL COVER. SEE MAP NOTE (D). REF. MAINT. REGISTER PL-2017-00114
8. Verify there are no unauthorized excavations, digging, or construction activities within the R-Area Ash Basin boundaries.	A	
9. Other <u>NO FURTHER ENTRIES</u>		CPC 12-13-17

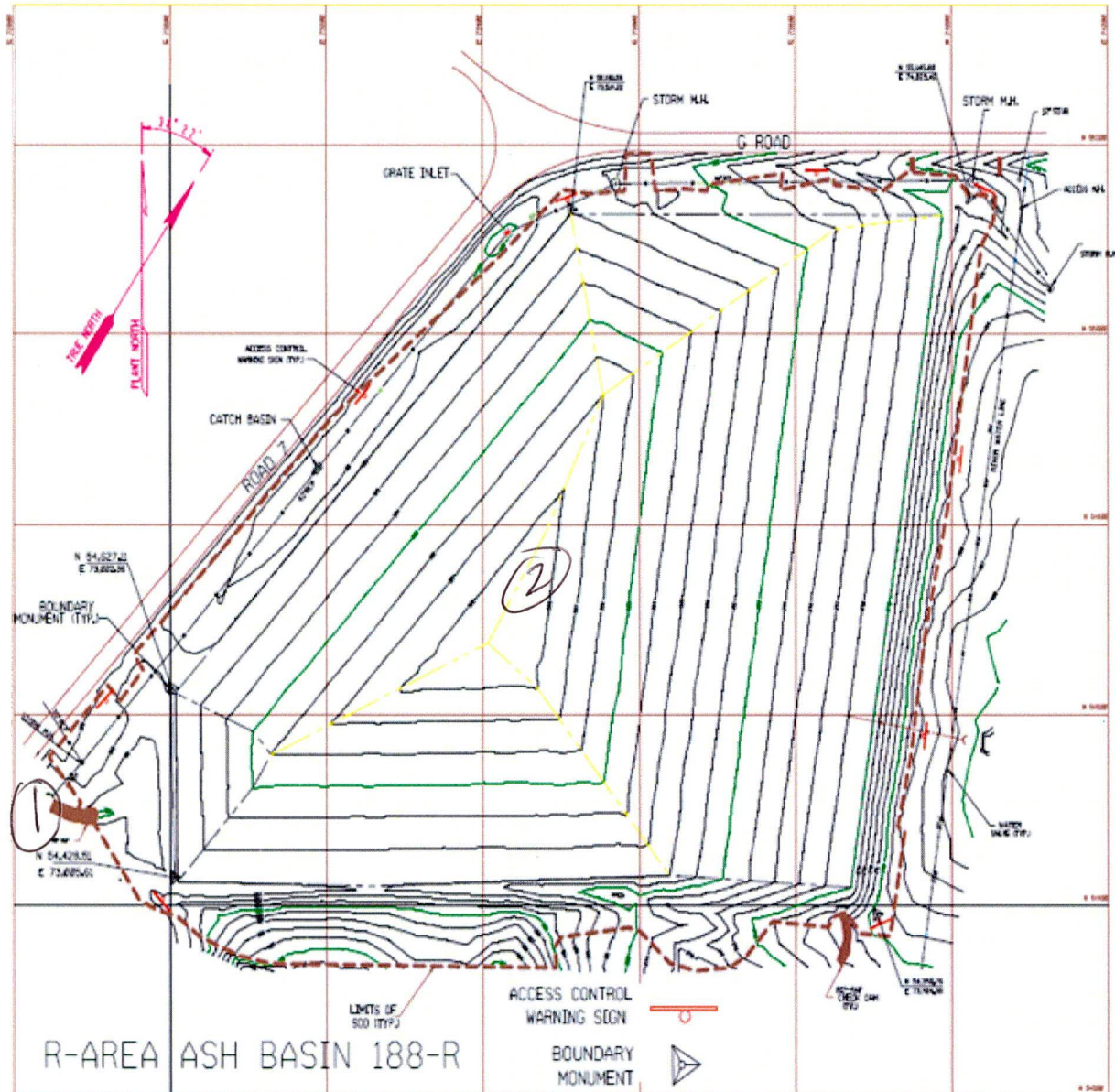
Inspected By		
CHARLES P. CARTER (Print Name)	<i>Charles P. Carter</i> (Signature)	12-13-17 (Date)

Review By Post-Closure Manager		
George W. Joyner (Print Name)	<i>George W. Joyner</i> (Signature)	12/27/17 (Date)

R-Area Operable Unit Ash Basin 188-R Field Inspection Checklist

Manual: C3
 Procedure: ER-IDS-019-051
 Revision: 2
 Page: 3 of 3

R-Area Operable Unit Ash Basin 188-R



NOTES: (1) = DRAINAGE DITCH ON THE NORTHWEST CORNER NEEDS VEGETATION + DEBRIS REMOVED. USES WELL CUT + REMOVE.
 (2) - ACTIVE ANT MOUNDS ON SOIL COVER. APPLIED 0.25 lbs. OF EXTINGUISH ANT BAIT.

C.P.L. 12-13-17

POST CLOSURE MAINTENANCE REGISTER

Index Number
Unit Name

329 R AREA OPERABLE UNIT ASH BASIN 188-R

Watershed LOWER THREE RUNS

AHA # AHA-ER-5534
 Work Order # N/A
 Work Group POST CLOSURE MAINTENANCE
 Priority Medium
 RCRA NO

Maintenance Number	PC-2017-00114	Maintenance Status	Complete
Inspection Date	12/13/2017	Chemical Type	Pesticide
Completion Date	12/13/2017	Chemical Name	Extinguish
		Amount Used	0.25 Pounds

Description Of Maintenance Item

Active ant mounds on waste unit

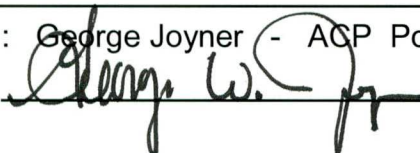
Maintenance Item Corrected

Applied Extinguish Ant Bait

Notes New observation.

Approved by : George Joyner - ACP Post Closure Manager

Signature



Approval date :

12/27/17