

**ENVIRONMENTAL COMPLIANCE & AREA COMPLETION PROJECTS (EC&ACP) STANDARD
OPERATING PROCEDURES, VOL. I**
**M-AREA HAZARDOUS WASTE MANAGEMENT FACILITY (BLDG. 904-51G) FIELD INSPECTION
CHECKLIST**
Manual: C3
Procedure: ER-IDS-019-022
Revision: 3
Effective Date: 06/01/2016
Type-Class: Form
Page: 1 of 5

WORKING COPY

This document is a Working Copy. Prior to start of work, verify this is the latest revision per the Procedure Index.



Verified By

02/25/2021

Date

CAUTION

The Inspector shall IMMEDIATELY notify the Post-Closure Manager and Environmental Compliance Authority if there has been a breach or compromise of the institutional controls of this waste unit. This notification shall be in accordance with Savannah River Site post-closure inspection procedures.

NOTE

1. Manual C3, ER-SOP-019, *Waste Unit Inspection and Maintenance*, shall be referred to for inspection details.
2. Monitoring wells associated with this waste unit are maintained in accordance with EC&ACP monitoring well procedures.
3. Steps in this checklist may be completed concurrently or in any order.
4. Unsatisfactory conditions found during the inspection may be listed on the detailed map of the inspected area.

 SCHEDULED
 UNSCHEDULED

A = Satisfactory X = Unsatisfactory (Explanation required)		A or X	Observation/Corrective Action Taken
1.	Verify roads to waste unit are accessible.	A	
2.	Verify fence, posts, and gates that surround M-Area Settling Basin are intact, in good condition, and unattended gates are locked.	A	

M-Area Hazardous Waste Management Facility (Bldg. 904-51G) Field Inspection Checklist

Manual: C3
 Procedure: ER-IDS-019-022
 Revision: 3
 Page: 2 of 5

SCHEDULED

UNSCHEDULED

A = Satisfactory X = Unsatisfactory (Explanation required)		A or X	Observation/Corrective Action Taken
3.	Verify M-Area Settling Basin signs (10) and postings are in acceptable condition, have correct information, and are legible from a distance of 25 feet.	A	
4.	Check integrity of drainage ditches, drain pipes and general area (including the drainage ditch to Lost Lake) for presence excessive erosion, sediment buildups any debris restricting water flow.	A	
5.	Check the soil cover for signs of erosion, abnormal soil cracks, depressions (subsidence) or physical impacts.	A	
6.	Visually check vegetative cover of M-Area Settling Basin for grass density, with no bare spots more than 3 feet by 3 feet in area and large weeds or woody vegetation on capped area. (The height of the vegetative cover should not impair the visual inspection of the soil cover. This will be determined by the Inspector.)	A	
7.	Check for excessive vegetation growing over fences, which may obstruct warning signs or visibility of inspected area.	A	
8.	Check M-Settling Basin cover for signs of burrowing animals.	X	Active ant mounds on soil cover. See Map Note: 1 Reference Maint. Register: PC-2021-00014 Shallow holes caused by Armadillos See Map Note: 2 Reference Maint. Register: PC-2021-00015
9.	Check side slopes for slumping and any observable signs of subsidence/depressions.	A	
10.	Inspect ditches for standing water, excessive vegetation and debris.	A	
11.	Verify annual Topographic/Subsidence Survey has been done for current calendar year.	A	COMPLETED ON 07/30/2020
12.	Verify copies of survey results are in EC&ACP Document Control Center.	A	

M-Area Hazardous Waste Management Facility (Bldg. 904-51G) Field Inspection Checklist

Manual: C3
 Procedure: ER-IDS-019-022
 Revision: 3
 Page: 3 of 5

SCHEDULED UNSCHEDULED

A = Satisfactory X = Unsatisfactory (Explanation required)		A or X	Observation/Corrective Action Taken
13.	Check around Lost Lake for evidence of any unauthorized activity in immediate area.	A	
14.	Ensure benchmark is visible and not damaged.	A	
15.	Other	NO FURTHER ENTRIES	

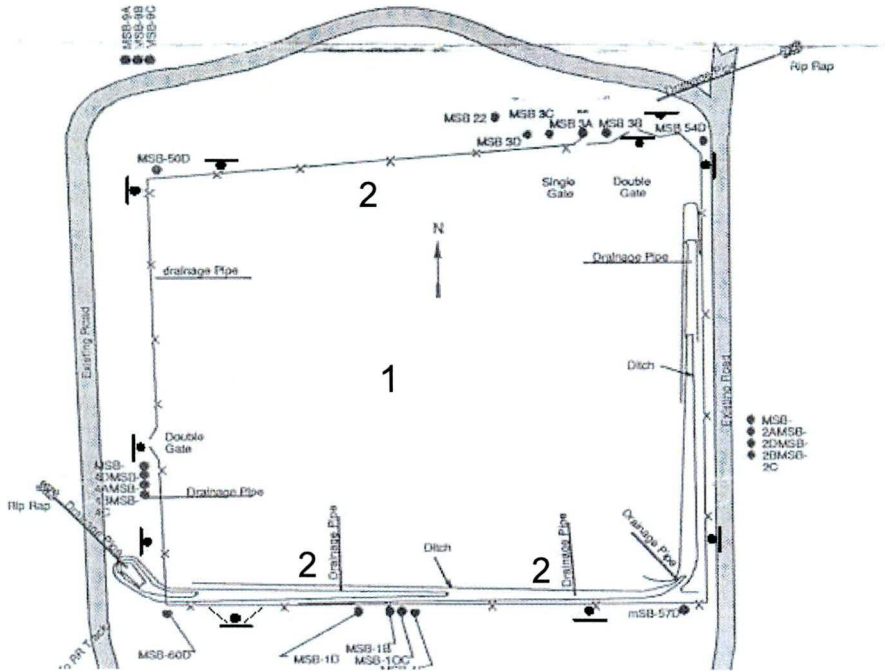
CPC 02/25/2021

Inspected By		
Charles P. Carter <i>(Print Name)</i>	<i>Charles P. Carter</i> <i>(Signature)</i>	02/25/2021 <i>(Date)</i>

Review By Post-Closure Manager		
George W. Joyner <i>(Print Name)</i>	<i>George W. Joyner</i> <i>(Signature)</i>	3/1/21 <i>(Date)</i>

Map of M-Area Hazardous Waste Management Facility 904-51G

Coordinates - N5-W7

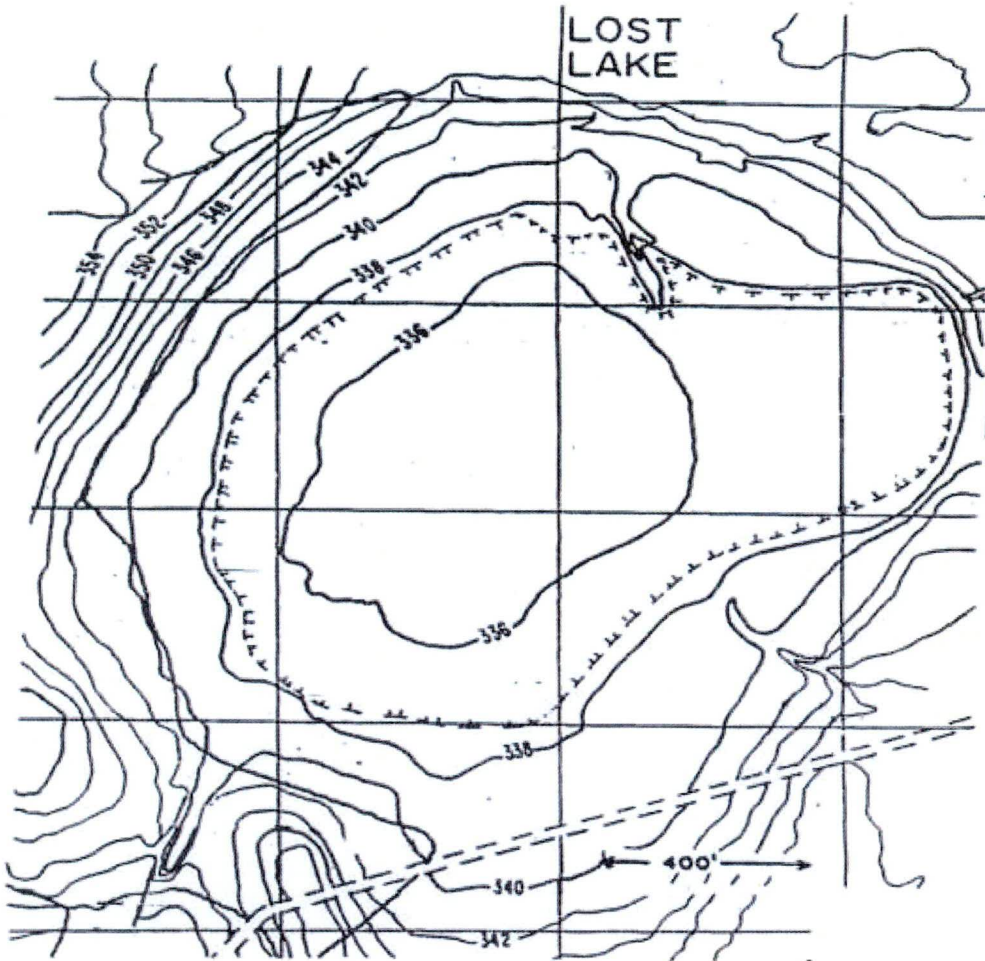


NOTES: 1=Active ant mounds on soil cover. Applied 0.5 lbs. of Extinguish ant bait.

2=Shallow holes caused by Armadillos. Post Closure Maintenance filled the shallow holes with top soil.

NO ENTRIES THIS PAGE

Map of M-Area Hazardous Waste Management Facility (Lost Lake)



NOTES:

~~NO ENTRIES THIS PAGE~~

POST CLOSURE MAINTENANCE REGISTER

Index Number

Unit Name

13 M-AREA HAZARDOUS WASTE MANAGEMENT FACILITY (M-AREA SETTLING BASIN - 904-51G)

Watershed UPPER THREE RUNS

AHA # AHA-ER-5534

Work Order # NA

Work Group POST CLOSURE MAINTENANCE

Priority Medium

RCRA YES

Maintenance Number PC-2021-00014

Maintenance Status Complete

Inspection Date 2/25/2021

Chemical Type NA

Completion Date 2/25/2021

Chemical Name Extinguish

Amount Used 0.5 Pound

Description Of Maintenance Item

Active ant mounds on soil cover

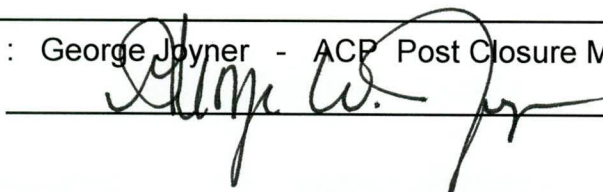
Maintenance Item Corrected

Applied Extinguish ant bait.

Notes New observation.

Approved by : George Joyner - ACP Post Closure Manager

Signature



Approval date :

3/1/21

POST CLOSURE MAINTENANCE REGISTER

Index Number

Unit Name

13 M-AREA HAZARDOUS WASTE MANAGEMENT FACILITY (M-AREA SETTLING BASIN - 904-51G)

Watershed UPPER THREE RUNS

AHA # AHA-ER-5534
Work Order # NA
Work Group POST CLOSURE MAINTENANCE
Priority Medium
RCRA YES

Maintenance Number PC-2021-00015 **Maintenance Status** Complete
Inspection Date 2/25/2021 **Chemical Type** NA
Completion Date 2/25/2021 **Chemical Name**
Amount Used

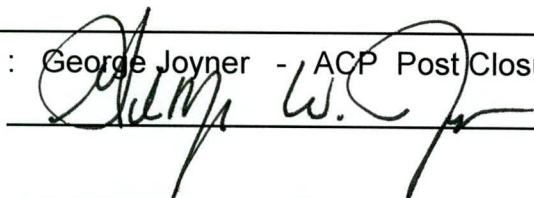
Description Of Maintenance Item
Shallow holes caused be Armadillos.

Maintenance Item Corrected
Post Closure Maintenace filled the shallow holes with top soil.

Notes New observation.

Approved by : George Joyner - ACP Post Closure Manager

Signature



Approval date :

3/1/21