

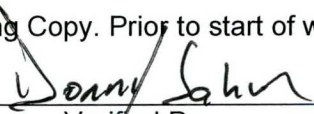
ENVIRONMENTAL COMPLIANCE & AREA COMPLETION PROJECTS (EC&ACP) STANDARD OPERATING PROCEDURES, VOL. I

Manual: C3
 Procedure: ER-IDS-019-036
 Revision: 5
 Effective Date: 4/20/2022
 Type-Class: Checklist
 Page: 1 of 3

R-AREA BURNING RUBBLE PITS (131-R & 131-1R) FIELD INSPECTION CHECKLIST

WORKING COPY

This document is a Working Copy. Prior to start of work, verify this is the latest revision per the Procedure Index.



 Verified By

 Date

CAUTION

The Inspector is required to IMMEDIATELY notify the Post-Closure Manager and Environmental Compliance Authority if there has been a breach or compromise of the institutional controls of this waste unit. This notification is made in accordance with Savannah River Site post-closure inspection procedures.

NOTE

1. Manual C3, Volume 1, Procedure ER-SOP-019, Waste Unit and IOU Inspection and Maintenance, is referenced for inspection details.
2. Monitoring wells associated with this waste unit are maintained in accordance with Environmental Compliance and Area Completion Projects monitoring well procedures.
3. Steps in this checklist may be completed concurrently or in any order.

SCHEDULED UNSCHEDULED

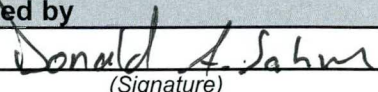
| A = Satisfactory | A or X | Observation/Corrective Action Taken |
|--|--------|-------------------------------------|
| X = Unsatisfactory (Explanation required) | | |
| 1. VERIFY roads are accessible. | A | |
| 2. VERIFY waste unit signs (4) are in acceptable condition, have correct information, and are legible from a distance of 25 feet. | A | |
| 3. VERIFY there is no unauthorized digging, excavation, or construction activities on soil cover. | A | |

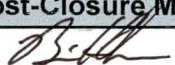
R-Area Burning Rubble Pits (131-R & 131-1R) Field Inspection Checklist

Manual: C3
 Procedure: ER-IDS-019-036
 Revision: 5
 Page: 2 of 3

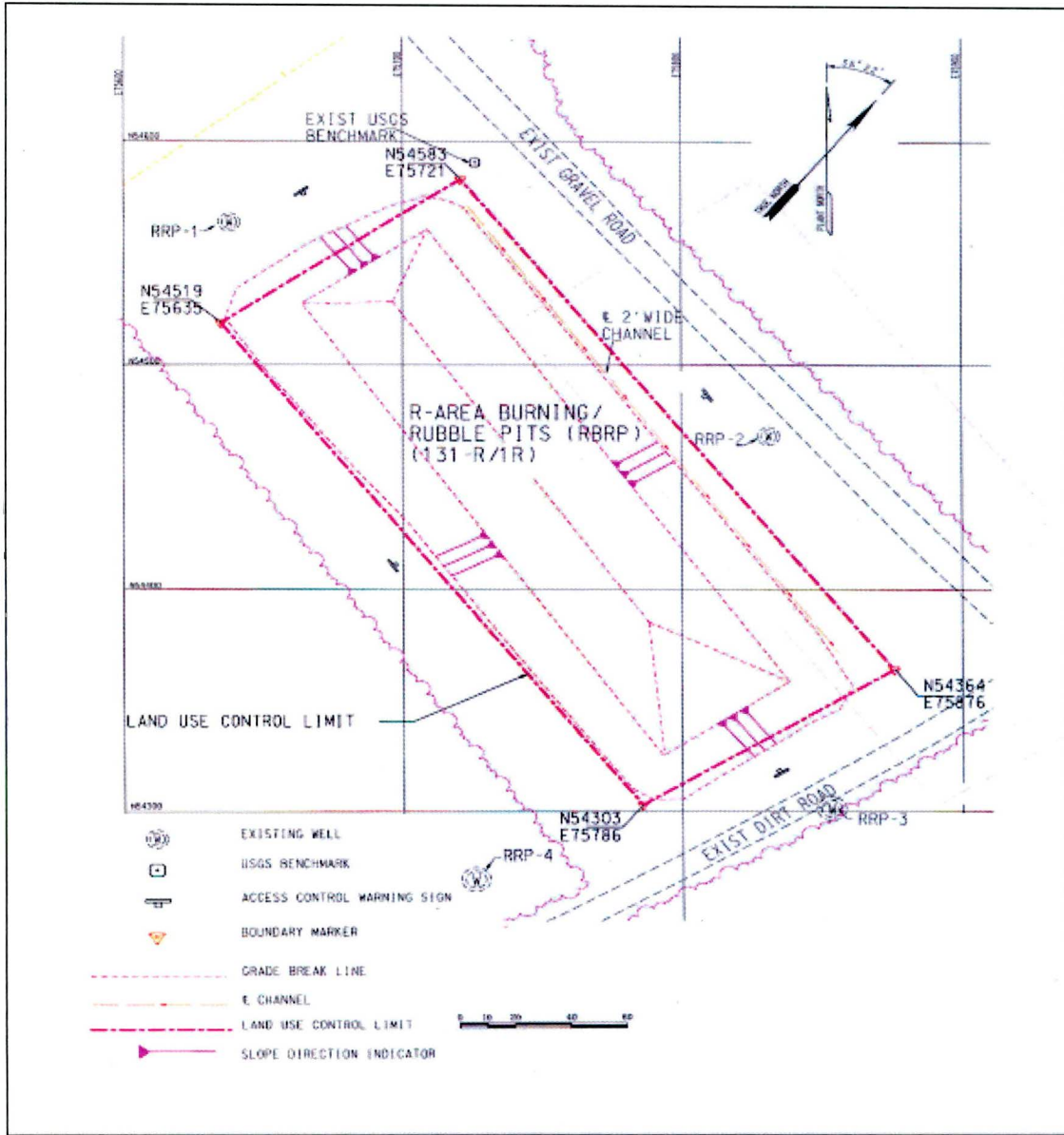
SCHEDULED UNSCHEDULED

| A = Satisfactory X = Unsatisfactory (Explanation required) | | A or X | Observation/Corrective Action Taken |
|---|---|--------|-------------------------------------|
| 4. | CHECK integrity of drainage ditches for presence of excessive erosion, sediment buildup, and any debris restricting water flow. | A | |
| 5. | VERIFY no woody vegetation is growing on soil cover, AND REMOVE OR IDENTIFY as needed. | A | |
| 6. | VISUALLY CHECK vegetative cover for grass density with no bare spots more than 3 feet by 3 feet in area. (The height of vegetation should not impair visual inspection of soil cover. This will be determined by the Inspector.) | A | |
| 7. | CHECK closure cover for signs of erosion or depressions (subsidence). | A | |
| 8. | CHECK for signs of burrowing animals. | A | |
| 9. | VISUALLY PERFORM a condition check of survey benchmarks for damage and visibility. | A | |
| 10. | Other None | A | |

| Inspected by | | |
|---------------------------------------|---|-----------------------------|
| Donald A. Sahn <i>(Print Name)</i> |  <i>(Signature)</i> | 08/10/2024 <i>(Date)</i> |

| Reviewed by Post-Closure Manager | | |
|--------------------------------------|---|----------------------------|
| Brian Hanshew <i>(Print Name)</i> |  <i>(Signature)</i> | 8/27/2024 <i>(Date)</i> |

MAP OF R-AREA BURNING RUBBLE PITS (131-R & 131-1R)



NOTES: Referenced Procedure: ER-SOP-019, 5.1 to perform an unscheduled inspection.

No further entries *DAS 8/27/24*