

ENVIRONMENTAL COMPLIANCE & AREA COMPLETION PROJECTS (EC&ACP) STANDARD OPERATING PROCEDURES, VOL. I

Manual: C3
 Procedure: ER-IDS-019-035
 Revision: 3
 Effective Date: 06/02/2016
 Type-Class: Form
 Page: 1 of 3

P REACTOR SEEPAGE BASIN OPERABLE UNIT (BLDGS. 904-61G, 904-62G AND 904-63G) FIELD INSPECTION CHECKLIST

WORKING COPY

This document is a Working Copy. Prior to start of work, verify this is the latest revision per the Procedure Index.

Charles P. Carter

Verified By

12/11/2019

Date

CAUTION

The Inspector shall IMMEDIATELY notify the Post-Closure Manager and Environmental Compliance Authority if there has been a breach or compromise of the institutional controls of this waste unit. This notification shall be in accordance with Savannah River Site post-closure inspection procedures.

NOTE

1. Manual C3, ER-SOP-019, *Waste Unit Inspection and Maintenance*, shall be referred to for inspection details.
2. Monitoring wells associated with this waste unit are maintained in accordance with EC&ACP Monitoring Well Procedures.
3. Steps in this checklist may be completed concurrently or in any order.

SCHEDULED

UNSCHEDULED

A = Satisfactory X = Unsatisfactory (Explanation required)		A or X	Observation/Corrective Action Taken
1.	Verify roads are accessible.	A	
2.	Verify that the waste unit signs (8) are in acceptable condition, have the correct information and are legible from a distance of 25 feet.	A	
3.	Verify there is no unauthorized digging, excavation or construction activities on the soil cover.	A	

P Reactor Seepage Basin Operable Unit (Bldgs. 904-61G, 904-62G And 904-63G) Field Inspection Checklist

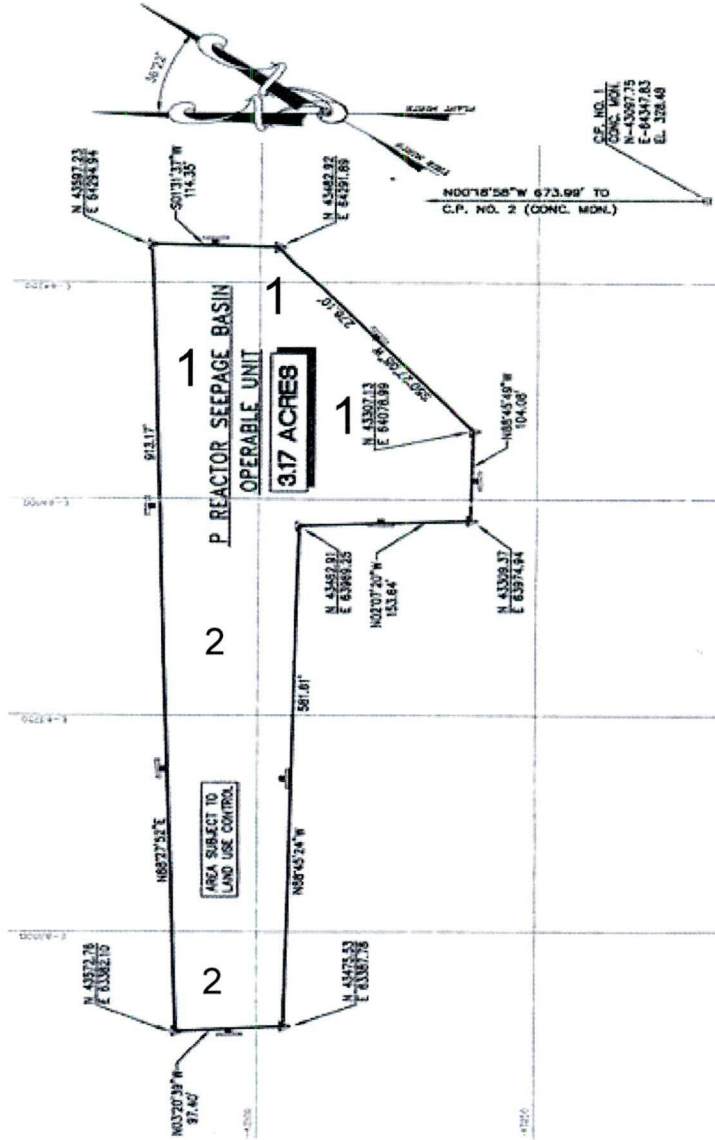
SCHEDULED UNSCHEDULED

A = Satisfactory X = Unsatisfactory (Explanation required)		A or X	Observation/Corrective Action Taken
4.	Check the integrity of drainage ditches for the presence of excessive erosion, sediment buildup, and any debris restricting water flow.	A	
5.	Verify that no woody vegetation is growing on the soil cover. Remove or identify as needed.	A	
6.	Visually check vegetative cover for grass density with no bare spots more than 3 feet by 3 feet in area. The height of the vegetation should not impair the visual inspection of the soil cover. This will be determined by the Inspector.	A	
7.	Check the closure cover for signs of erosion or depressions (subsidence).	A	
8.	Check for signs of burrowing animals.	X	Hogs Rooting on soil cover. See map note:1 Reference Maintenance Register: PC-2019-00108
9.	Visually perform a condition check of the survey benchmarks for damage and visibility.	A	
10.	Other Ant Mounds on Soil Cover	X	Active ant mounds on soil cover See map note:2 Reference Maintenance Register: PC-2019-00109

Inspected By		
Charles P. Carter <i>(Print Name)</i>	<i>Charles P. Carter</i> <i>(Signature)</i>	12/11/2019 <i>(Date)</i>

Review By Post-Closure Manager		
George W. Joyner <i>(Print Name)</i>	<i>George W. Joyner</i> <i>(Signature)</i>	12/16/19 <i>(Date)</i>

P REACTOR SEEPAGE BASIN (BLDGS. 904-61G,904-62G, 904-63G)



NOTES: 1=Hogs Rooting on soil cover. The USFS will repair with topsoil, grass seed and wheat straw
 2=Active ant mounds on soil cover. Applied 0.75 lbs. of extinguish ant bait.

NO FURTHER ENTRIES

POST CLOSURE MAINTENANCE REGISTER

Index Number	Unit Name
317	P REACTOR SEEPAGE BASIN OPERABLE UNIT - 904-61G
318	P REACTOR SEEPAGE BASIN OPERABLE UNIT - 904-62G
319	P REACTOR SEEPAGE BASIN OPERABLE UNIT - 904-63G

Watershed STEEL CREEK

AHA # AHA-ER-5534
Work Order # NA
Work Group POST CLOSURE MAINTENANCE
Priority Medium
RCRA NO

Maintenance Number	PC-2019-00109	Maintenance Status	Complete
Inspection Date	12/11/2019	Chemical Type	Pesticide
Completion Date	12/11/2019	Chemical Name	Extinguish
		Amount Used	0.75 Pounds

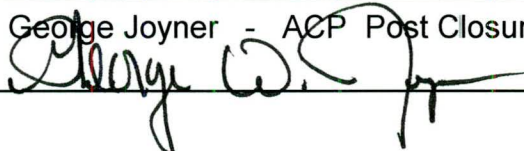
Description Of Maintenance Item
Active ant mounds on waste unit

Maintenance Item Corrected
Applied Extinguish pesticide

Notes New observation

Approved by : George Joyner - ACP Post Closure Manager

Signature



Approval date :

12/16/19

POST CLOSURE MAINTENANCE REGISTER

Index Number	Unit Name
317	P REACTOR SEEPAGE BASIN OPERABLE UNIT - 904-61G
318	P REACTOR SEEPAGE BASIN OPERABLE UNIT - 904-62G
319	P REACTOR SEEPAGE BASIN OPERABLE UNIT - 904-63G

Watershed STEEL CREEK

AHA # NA
Work Order # NA
Work Group USFS
Priority Medium
RCRA NO

Maintenance Number	PC-2019-00108	Maintenance Status	Complete
Inspection Date	12/11/2019	Chemical Type	NA
Completion Date	9/6/2023	Chemical Name	
		Amount Used	

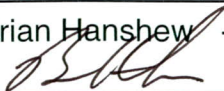
Description Of Maintenance Item
Hogs rooting on soil cover

Maintenance Item Corrected
US Forest Service filled with top soil, put out grass seed and put out wheat straw

Notes New observation

Approved by : Brian Hanshaw - ACP Post Closure Manager

Signature



Approval date :

3/12/2025