

**ENVIRONMENTAL COMPLIANCE & AREA COMPLETION PROJECTS (EC&ACP) STANDARD
OPERATING PROCEDURES, VOL. I**
Manual: C3
Procedure: ER-IDS-019-007
Revision: 5
Effective Date: 06/02/2016
Type-Class: Form
Page: 1 of 3
L-AREA OIL CHEMICAL BASIN (BLDG. 904-83G) FIELD INSPECTION CHECKLIST
WORKING COPY

This document is a Working Copy. Prior to start of work, verify this is the latest revision per the Procedure Index.



Verified By

09/10/2020

Date

CAUTION

The Inspector shall IMMEDIATELY notify the Post-Closure Manager and Environmental Compliance Authority if there has been a breach or compromise of the institutional controls of this waste unit. This notification shall be in accordance with Savannah River Site post-closure inspection procedures.

NOTE

1. Manual C3, ER-SOP-019, *Waste Unit Inspection and Maintenance*, shall be referred to for inspection details.
2. Monitoring wells associated with this waste unit are maintained in accordance with EC&ACP Monitoring Well Procedures.
3. Steps in this checklist may be completed concurrently or in any order.

 SCHEDULED
 UNSCHEDULED

A = Satisfactory X = Unsatisfactory (Explanation required)		A or X	Observation/Corrective Action Taken
1.	Verify roads to waste unit are accessible.	A	
2.	Verify that the waste unit signs (12) are in acceptable condition, have the correct information and are legible from a distance of 25 feet. Refer to Manual C1, Procedure ER-AP-127, <i>ACP Waste Unit Field Inspection and Maintenance</i> .	A	

L-Area Oil Chemical Basin (Bldg. 904-83G) Field Inspection Checklist

Manual: C3
 Procedure: ER-IDS-019-007
 Revision: 5
 Page: 2 of 3

SCHEDULED UNSCHEDULED

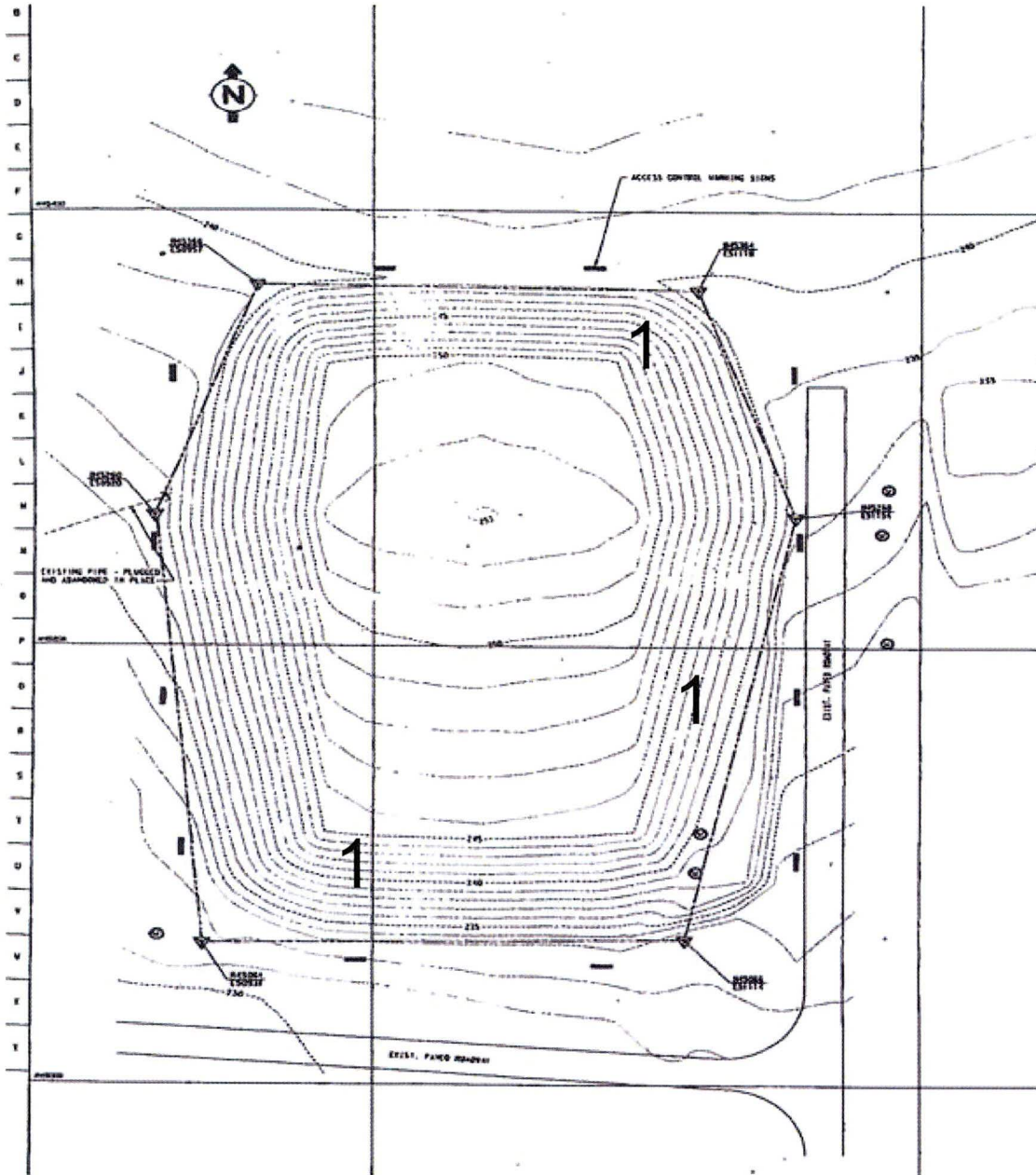
A = Satisfactory X = Unsatisfactory (Explanation required)		A or X	Observation/Corrective Action Taken
3.	Verify that there is no excavating, digging or construction activity on the soil cover.	A	
4.	Verify that no woody vegetation is growing on the soil cover. Remove or identify as needed.	A	
5.	Visually check vegetative cover for grass density with no bare spots more than 3 feet by 3 feet in area. The height of the vegetation should not impair the visual inspection of the soil cover. This will be determined by the Inspector.	A	
6.	Check the soil cover for signs of erosion or depressions (subsidence).	A	
7.	Check for signs of burrowing animals.	X	Active Ant Mounds on Soil Cover See Map Note: 1 Reference Maintenance Register: PC-2020-00066
8.	Visually inspect the concrete markers (bench marks) to ensure they are visible and not damaged.	A	
9.	Other	NO FURTHER ENTRIES	

CPC 09/10/2020

Inspected By		
Charles P. Carter <i>(Print Name)</i>	<i>Charles P. Carter</i> <i>(Signature)</i>	09/10/2020 <i>(Date)</i>

Review By Post-Closure Manager		
George W. Joyner <i>(Print Name)</i>	<i>George W. Joyner</i> <i>(Signature)</i>	9/14/20 <i>(Date)</i>

MAP L-AREA OIL CHEMICAL BASIN (BLDG. 904-83G)



NOTES: 1=Active Ant Mounds on Soil Cover. Applied 0.5 lbs. of Extinguish ant bait

~~NO FURTHER ENTRIES~~

POST CLOSURE MAINTENANCE REGISTER

Index Number

Unit Name

96 L-AREA OIL / CHEMICAL BASIN - 904-83G

Watershed STEEL CREEK

AHA # AHA-ER-5534
Work Order # NA
Work Group POST CLOSURE MAINTENANCE
Priority Medium
RCRA NO

Maintenance Number	PC-2020-00066	Maintenance Status	Complete
Inspection Date	9/10/2020	Chemical Type	Pesticide
Completion Date	9/10/2020	Chemical Name	Extinguish
		Amount Used	0.5 Pounds

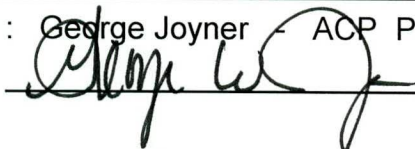
Description Of Maintenance Item
Active ant mounds on waste unit

Maintenance Item Corrected
Applied Extinguish pesticide

Notes New observation.

Approved by : George Joyner - ACP Post Closure Manager

Signature



Approval date :

9/14/20