

**ENVIRONMENTAL COMPLIANCE & AREA COMPLETION PROJECTS (EC&ACP) STANDARD
OPERATING PROCEDURES, VOL. I**
Manual: C3
Procedure: ER-IDS-019-022
Revision: 3
Effective Date: 06/01/2016
Type-Class: Form
Page: 1 of 5

**M-AREA HAZARDOUS WASTE MANAGEMENT FACILITY (BLDG. 904-51G) FIELD INSPECTION
CHECKLIST**
WORKING COPY

This document is a Working Copy. Prior to start of work, verify this is the latest revision per the Procedure Index.

CHARLES F. CARTER
 Verified By

5-23-18
 Date

CAUTION

The Inspector shall IMMEDIATELY notify the Post-Closure Manager and Environmental Compliance Authority if there has been a breach or compromise of the institutional controls of this waste unit. This notification shall be in accordance with Savannah River Site post-closure inspection procedures.

NOTE

1. Manual C3, ER-SOP-019, *Waste Unit Inspection and Maintenance*, shall be referred to for inspection details.
2. Monitoring wells associated with this waste unit are maintained in accordance with EC&ACP monitoring well procedures.
3. Steps in this checklist may be completed concurrently or in any order.
4. Unsatisfactory conditions found during the inspection may be listed on the detailed map of the inspected area.

 SCHEDULED
 UNSCHEDULED

A = Satisfactory		A or X	Observation/Corrective Action Taken
X = Unsatisfactory (Explanation required)			
1.	Verify roads to waste unit are accessible.	A	
2.	Verify fence, posts, and gates that surround M-Area Settling Basin are intact, in good condition, and unattended gates are locked.	A	

M-Area Hazardous Waste Management Facility (Bldg. 904-51G) Field Inspection Checklist

Manual: C3
 Procedure: ER-IDS-019-022
 Revision: 3
 Page: 2 of 5

 SCHEDULED

 UNSCHEDULED

A = Satisfactory X = Unsatisfactory (Explanation required)	A or X	Observation/Corrective Action Taken
3. Verify M-Area Settling Basin signs (10) and postings are in acceptable condition, have correct information, and are legible from a distance of 25 feet.	X	THREE SIGNS NEED REPLACING. SEE MAP NOTED. REF. MAINT. REGISTER PC-2018-00051
4. Check integrity of drainage ditches, drain pipes and general area (including the drainage ditch to Lost Lake) for presence excessive erosion, sediment buildups any debris restricting water flow.	A	
5. Check the soil cover for signs of erosion, abnormal soil cracks, depressions (subsidence) or physical impacts.	A	
6. Visually check vegetative cover of M-Area Settling Basin for grass density, with no bare spots more than 3 feet by 3 feet in area and large weeds or woody vegetation on capped area. (The height of the vegetative cover should not impair the visual inspection of the soil cover. This will be determined by the Inspector.)	A	
7. Check for excessive vegetation growing over fences, which may obstruct warning signs or visibility of inspected area.	A	
8. Check M-Settling Basin cover for signs of burrowing animals.	A	
9. Check side slopes for slumping and any observable signs of subsidence/depressions.	A	
10. Inspect ditches for standing water, excessive vegetation and debris.	A	
11. Verify annual Topographic/Subsidence Survey has been done for current calendar year.	A	
12. Verify copies of survey results are in EC&ACP Document Control Center.	A	

M-Area Hazardous Waste Management Facility (Bldg. 904-51G) Field Inspection Checklist

Manual: C3
 Procedure: ER-IDS-019-022
 Revision: 3
 Page: 3 of 5

SCHEDULED

UNSCHEDULED

A = Satisfactory X = Unsatisfactory (Explanation required)	A or X	Observation/Corrective Action Taken
13. Check around Lost Lake for evidence of any unauthorized activity in immediate area.	A	
14. Ensure benchmark is visible and not damaged.	A	
15. Other	ND FURTHER ENTRIES	CPC. 5-23-18

Inspected By		
CHARLES P. CARTER <small>(Print Name)</small>	Charles P. Carter <small>(Signature)</small>	5-23-18 <small>(Date)</small>

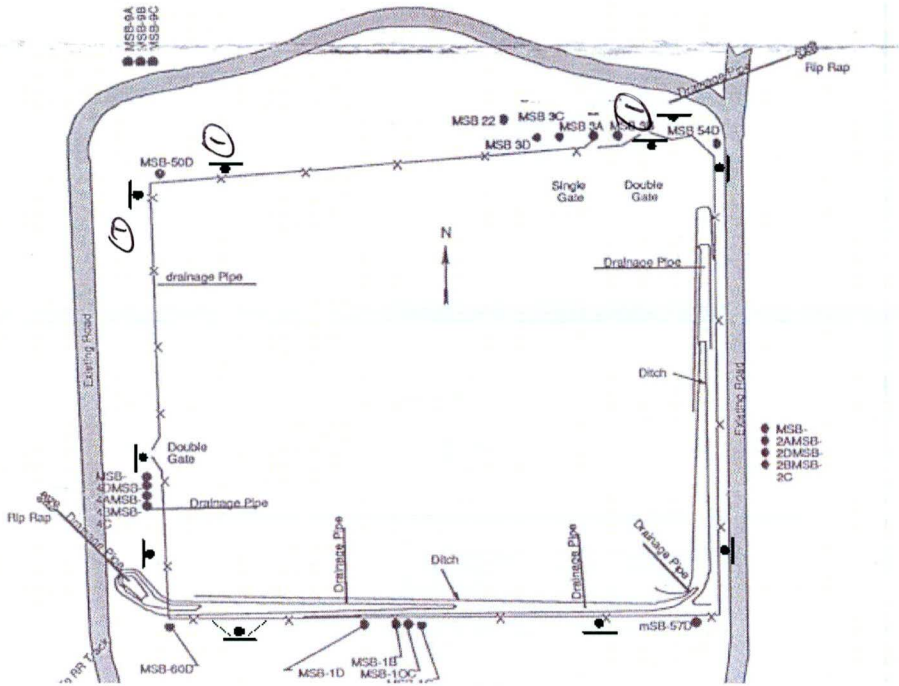
Review By Post-Closure Manager		
George W. Joyner <small>(Print Name)</small>	George W. Joyner <small>(Signature)</small>	6/19/18 <small>(Date)</small>

M-Area Hazardous Waste Management Facility (Bldg. 904-51G) Field Inspection Checklist

Manual: C3
Procedure: ER-IDS-019-022
Revision: 3
Page: 4 of 5

Map of M-Area Hazardous Waste Management Facility 904-51G

Coordinates - N5-W7



NOTES: ① = THREE WASTE UNIT SIGNS NEED REPLACING.
THE SIGN SHOP WILL FABRICATE THE SIGNS + POST CLOSURE
MAINT. WILL REPLACE.

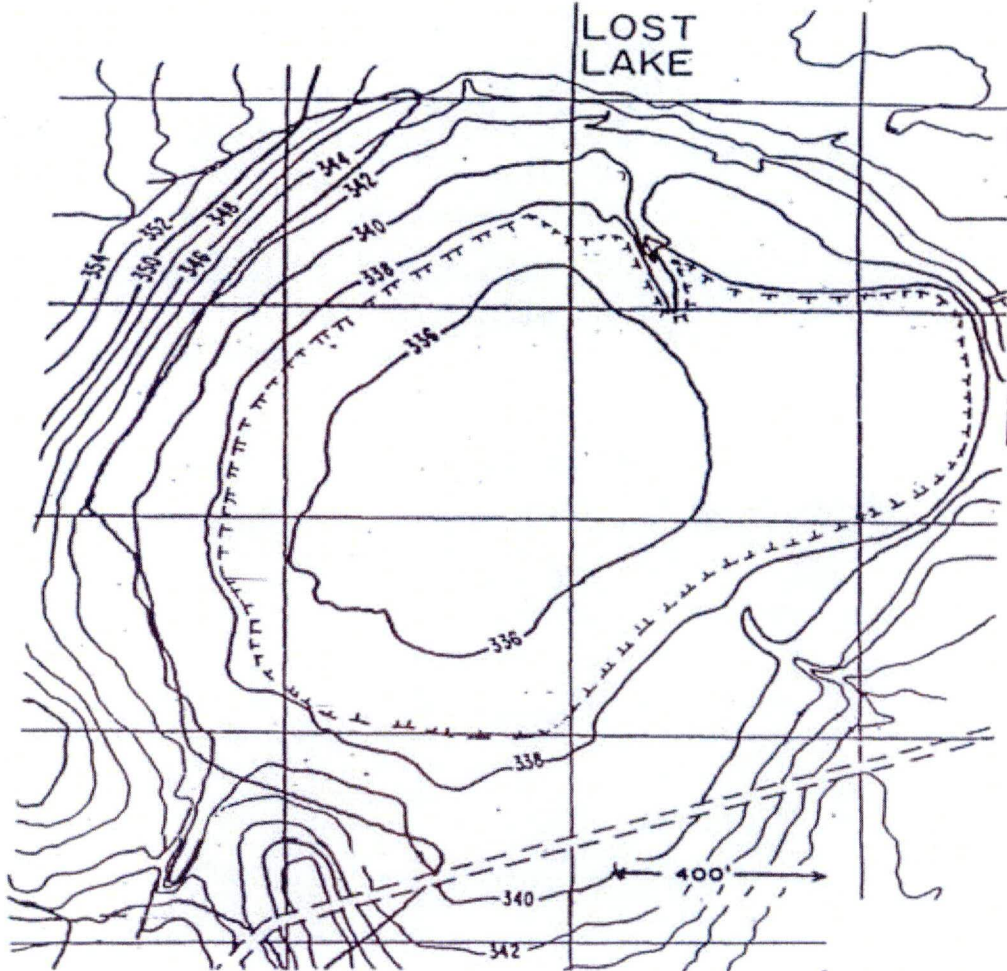
~~NO FURTHER ENTRIES~~

CPL 5-23-18

M-Area Hazardous Waste Management Facility (Bldg. 904-51G) Field Inspection Checklist

Manual: C3
Procedure: ER-IDS-019-022
Revision: 3
Page: 5 of 5

Map of M-Area Hazardous Waste Management Facility (Lost Lake)



NOTES:

NO FURTHER ENTRIES

CPC 5-23-18

POST CLOSURE MAINTENANCE REGISTER

Index Number
Unit Name

13 M-AREA HAZARDOUS WASTE MANAGEMENT FACILITY (M-AREA SETTLING BASIN - 904-51G)

Watershed UPPER THREE RUNS

AHA # AHA-ER-5534
 Work Order # NA
 Work Group POST CLOSURE MAINTENANCE
 Priority Medium
 RCRA YES

Maintenance Number	PC-2018-00051	Maintenance Status	Complete
Inspection Date	5/23/2018	Chemical Type	NA
Completion Date	6/29/2018	Chemical Name	
		Amount Used	

Description Of Maintenance Item

Three waste Unit Signs needs replacing.

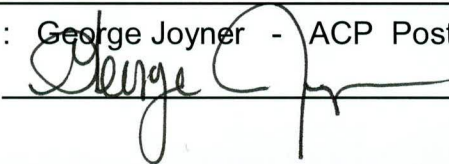
Maintenance Item Corrected

Post Closure Maintenance replaced signs.

Notes New observation.

Approved by : George Joyner - ACP Post Closure Manager

Signature



Approval date :

7/2/18