

**ENVIRONMENTAL COMPLIANCE & AREA COMPLETION PROJECTS (EC&ACP) STANDARD
OPERATING PROCEDURES, VOL. I**
Manual: C3
Procedure: ER-IDS-019-053
Revision: 2
Effective Date: 06/01/2016
Type-Class: Form
Page: 1 of 3

**L-AREA EARLY CONSTRUCTION AND OPERATIONAL DISPOSAL SITE (ECODS) L-1 OPERABLE
UNIT FIELD INSPECTION CHECKLIST**
WORKING COPY

This document is a Working Copy. Prior to start of work, verify this is the latest revision per the Procedure Index.

Charles P. Carter
 Verified By

10-26-18
 Date

CAUTION

The Inspector shall IMMEDIATELY notify the Post-Closure Manager and Environmental Compliance Authority if there has been a breach or compromise of the institutional controls of this waste unit. This notification shall be in accordance with Savannah River Site post-closure inspection procedures.

NOTE

1. Manual C3, ER-SOP-019, *Waste Unit Inspection and Maintenance*, shall be referred to for inspection details.
2. Steps in this checklist may be completed concurrently or in any order.

 SCHEDULED
 UNSCHEDULED

A = Satisfactory X = Unsatisfactory (Explanation required)		A or X	Observation/Corrective Action Taken
1.	Verify roads are accessible. (<i>Corrective Measures Implementation Report (CMIR)/Remedial Action Completion Report (RACR)</i> , Section 7, Note 1, may be referenced) SRNS-RP-2010-01524, 1B, and 1C Operable Unit (U).	A	
2.	Verify waste unit warning signs (6) are in acceptable condition, have correct information, and are legible from a distance of 25 feet.	A	
3.	Check survey boundary monuments for damage and visibility.	A	

L-Area Early Construction and Operational Disposal Site (ECODS) L-1 Operable Unit Field
 Inspection Checklist

SCHEDULED

UNSCHEDULED

A = Satisfactory X = Unsatisfactory (Explanation required)	A or X	Observation/Corrective Action Taken
4. Verify there are no unauthorized excavations, digging, or construction activities within the ECOD L-1 boundaries.	A	
5. Verify signs of erosion or depression (subsidence) is not present. (CMIR/RACR, Section 7, Item 5) SRNS-RP-2010-01524.	A	
6. Verify signs of burrowing or mounding animals are not present. (CMIR/RACR, Section 7, Item 4) SRNS-RP-2010-01524.	A	
7. Other WASTE SITE PERIMETER TRAIL	X	FALLEN TREES NEED REMOVING FROM TRAIL. SEVERAL STANDING DEAD TREES NEED REMOVAL. SEE MAP NOTED. REF. MAINT. REGISTER PL-2018-00116

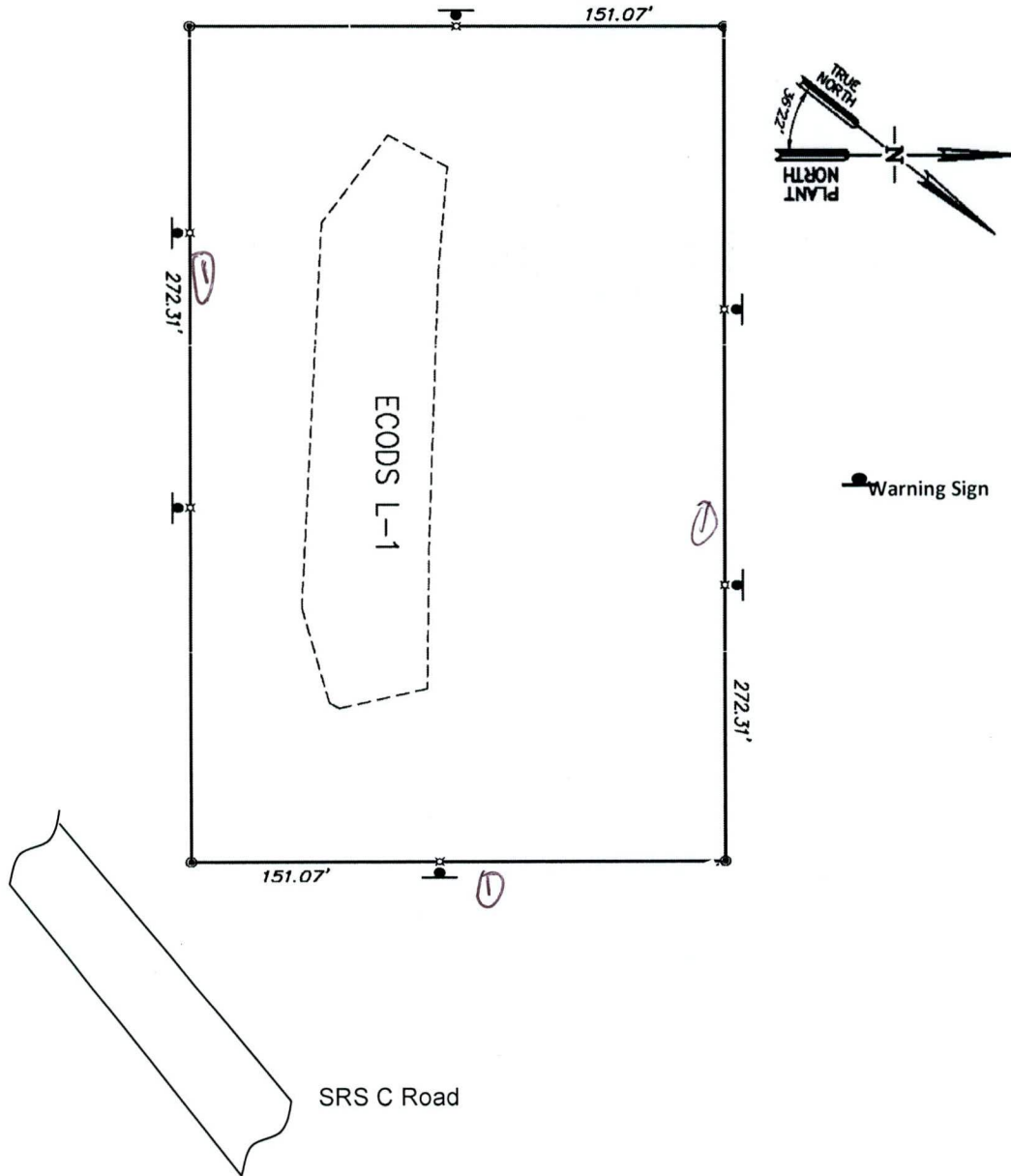
Inspected By		
Charles P. Carter (Print Name)	Charles P. Carter (Signature)	10-26-18 (Date)

Review By Post-Closure Manager		
George W. Jayner (Print Name)	George W. Jayner (Signature)	11/15/18 (Date)

L-Area Early Construction and Operational Disposal Site
(ECODS) L-1 Operable Unit Field Inspection Checklist

Manual: C3
Procedure: ER-IDS-019-053
Revision: 2
Page: 3 of 3

L-Area ECODS L-1 Operable Unit



NOTES: ① = FALLEN AND STANDING DEAD TREES NEED REMOVAL FROM IN AND AROUND THE WASTE SITE PERIMETER TRAIL, USFS WILL CUT AND REMOVE.

~~NO FURTHER ENTRIES~~

CPL 10-26-18

POST CLOSURE MAINTENANCE REGISTER

Index Number
Unit Name

535 L AREA ECODS L-1 OPERABLE UNIT

Watershed STEEL CREEK

AHA #	NA
Work Order #	N/A
Work Group	USFS
Priority	Medium
RCRA	NO

Maintenance Number	PC-2018-00116	Maintenance Status	Complete
Inspection Date	10/26/2018	Chemical Type	NA
Completion Date	11/5/2018	Chemical Name	
		Amount Used	

Description Of Maintenance Item

Waste Unit boundary has fallen trees that need removing from the trail. Several standing dead trees around the boundary need removal.

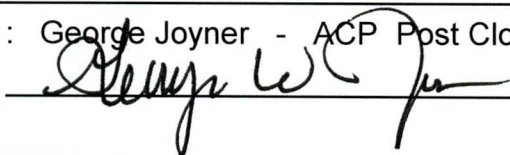
Maintenance Item Corrected

USFS cut and cleared fallen trees from the boundary trail and cut/removed standing dead trees from the boundary as well.

Notes New observation

Approved by : George Joyner - ACP Post Closure Manager

Signature



Approval date :

2/19/19