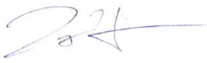


Facility Decommissioning Evaluation (FDE) Building 607-3F Sewage Lift Station

This is a Simple Model Decommissioning per Facility Disposition Manual 1C

Prepared by: **Heather Dunbar** Digitally signed by Heather Dunbar
Date: 2023.10.26 13:05:37 -04'00' Date: 10/26/23
Heather Dunbar
EC&ACP Engineering
Environmental Compliance and Area Completion Projects

Reviewed by: **PATRICK O'NEILL** Digitally signed by PATRICK
(Affiliate) O'NEILL (Affiliate)
Date: 2023.10.26 06:57:06 -04'00' Date: 10/26/23
Patrick O'Neill
Project Manager, 235-F Decommissioning
Environmental Compliance and Area Completion Projects

Reviewed by:  Digitally signed by Trey Hiott
Date: 2023.10.26 07:15:45
-04'00' Date: 10/26/23
James (Trey) Hiott III
EC&ACP Environmental Compliance Authority
Environmental Compliance and Area Completion Projects

Approved: **MANUEL** Digitally signed by MANUEL
TERRONEZ (Affiliate) TERRONEZ (Affiliate)
Date: 2023.10.26 13:11:36 -04'00' Date: 10-26-2023
Manuel Terronez
EC&ACP Engineering Manager
Environmental Compliance and Area Completion Projects

Approved: **RYAN MCDANIEL** Digitally signed by RYAN
(Affiliate) MCDANIEL (Affiliate)
Date: 2023.10.26 13:57:08 -04'00' Date: 10-26-2023
Ryan McDaniel
EC&ACP Environmental Compliance Manager
Environmental Compliance and Area Completion Projects

Approved: **THELESIA** Digitally signed by THELESIA
OLIVER (Affiliate) OLIVER (Affiliate)
Date: 2023.10.26 16:38:09 -04'00' Date: 10/26/2023
Thelesia Oliver
EC&ACP Chief Engineer
Environmental Compliance and Area Completion Projects

Introduction

This document contains an evaluation of available existing information about a facility that is slated for decommissioning. This evaluation screens the project to determine whether it is appropriate to conduct the decommissioning under the Comprehensive Environmental Response, Compensation, and Liability Act (CERCLA) or to use a simpler graded approach.

This Facility Decommissioning Evaluation consists of three sections. Part 1 contains a description of the project scope, including a brief summary of the purpose and history of the facility and photographs of the structures that are part of the project. Part 2 encompasses a series of questions, the answers to which determine the decommissioning model (CERCLA Model, Integrated Sampling Model, or Simple Model) that will be used. The three graded approach models are described in Facility Disposition Manual 1C, Procedure 501. Part 2 also includes a justification for the answers to each question. Part 3 is a list of references that were used for the evaluation.

Conclusion

A review of the existing characterization data, process/building history, sample data and walk downs of the facility, supports the determination that this building meets the criteria of a Clean Building, Simple Model as described in Facility Disposition Manual 1C, Procedure 501. This decision is supported by the documentation found throughout the body of this document. No releases of hazardous, chemical or radioactive materials were associated with this structure.

Part 1. Project Scope

Scope

This evaluation has been prepared in accordance with requirements found in Facility Disposition Manual 1C, Procedure 502, "Preparing Decommissioning Decision Documents." The scope of this evaluation includes Building 607-3F, Sewage Lift Station, which is further described below.

The proposed decommissioning end-state for this facility is a combination of Demolition & Removal (D&R) and In-Situ Decommissioning. The combination involves demolition of the metal building structure to grade. The two bollards located on the east side of the building will be cut to grade and appropriately disposed of.

The proposed decommissioning end-state for the below grade structure of this facility is In-Situ Decommissioning. The below grade structure is essentially concrete. Below-grade equipment (including tanks, ejectors, pump) and metal material will be removed during the decommissioning process and disposed of. The below-grade area of the 607-3F Sewage Lift Station will be filled to grade with cementitious material.

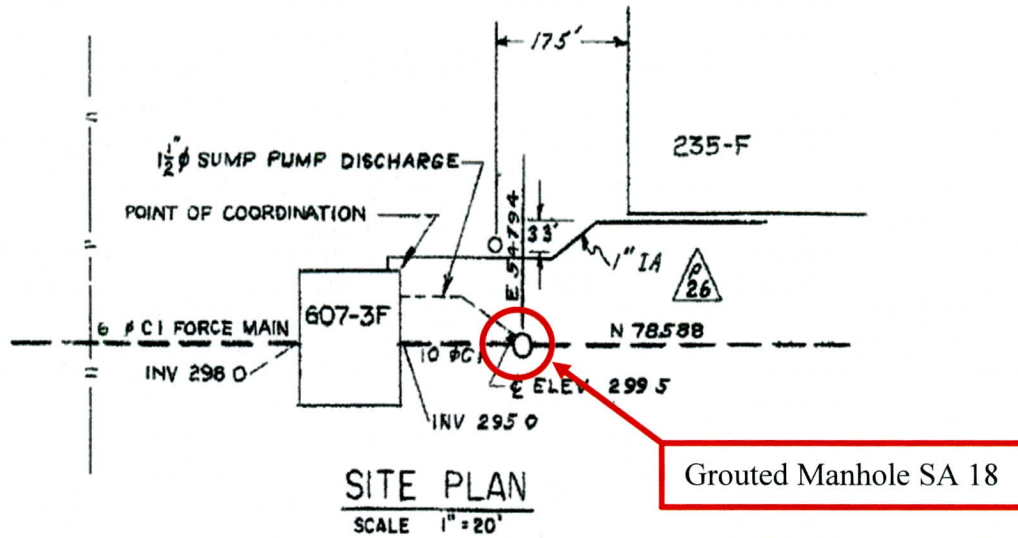


Figure 2. Site plan location of Building 235-F relative to 607-3F Sewage Lift Station

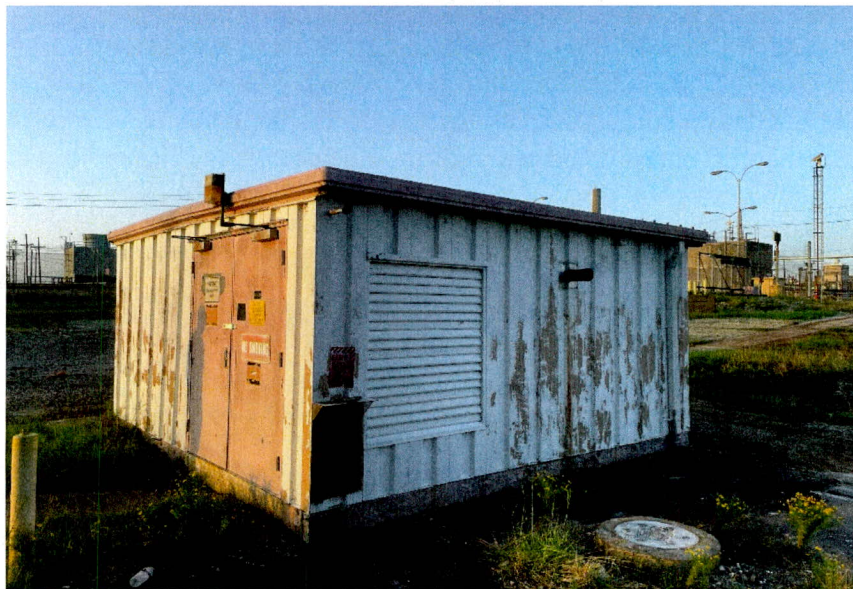


Figure 3. 607 -3F Sewage Lift Station exterior

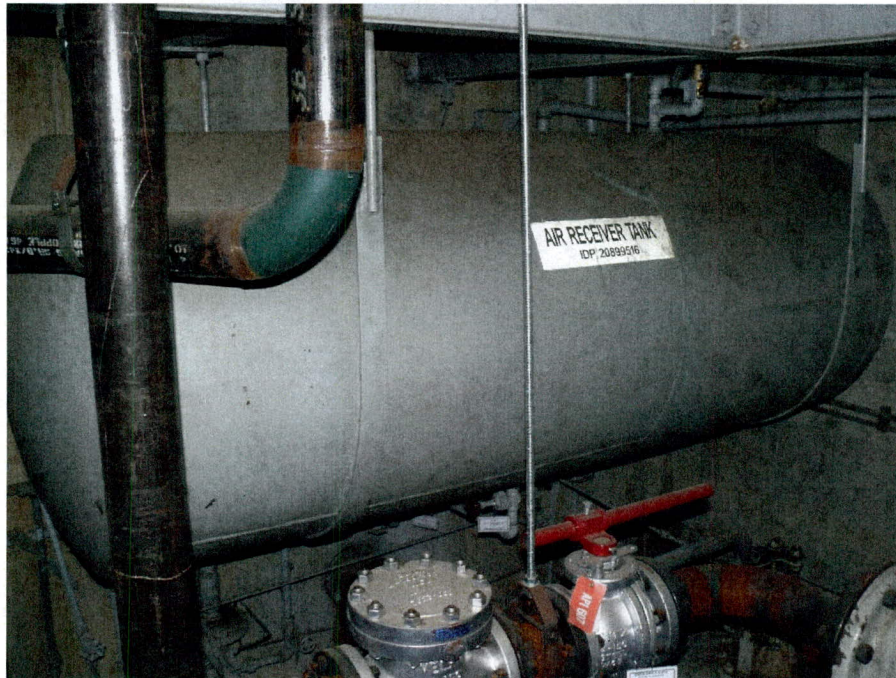


Figure 6. Building Sewage Lift Station basement showing Air Receiver Tank

There are grated steel steps to the basement, with a handrail to the entrance doors of the building. The basement is constructed of reinforced concrete and measures approximately 13 ft. 6 in. length x 12 ft. x 6 in. width x 12 ft. depth. The basement contains an air receiver tank, two sewage lift tanks with ejectors, and one sump pump (1/2 hp, 480V, 3-phase centrifugal), all located below grade (Figures 5 and 6). There are no floor drains present.

Chemical Process

<i>Chemical Name</i>	<i>Process location</i>	<i>Evidence of spills?</i>
N/A	N/A	N/A

Radioactive Process

<i>Isotope</i>	<i>Contaminated areas/others</i>
N/A	N/A

	Question	Yes	No	Justification
12.	Is the facility a formerly nuclear, radiological, or high-hazard chemical facility? <i>If Yes, this is an Integrated Sampling Model. Stop.</i>			N/A
13.	Has EC&ACP's Regulatory Support Group determined that a final survey is not required for this facility? <i>If Yes, this is a Simple Model. If No, this is an Integrated Sampling Model. Stop</i>			N/A