



Department of Energy
Savannah River Operations Office
P.O. Box A
Aiken, South Carolina 29802

AUG 26 2021

Ms. Susan B. Fulmer, P. G., Manager
Federal Remediation Section
Division of Site Assessment, Remediation and Revitalization
Bureau of Land and Waste Management
South Carolina Department of Health and Environmental Control
2600 Bull Street
Columbia, South Carolina 29201

Mr. Jon Richards
Savannah River Site Remedial Project Manager
Superfund Division
U. S. Environmental Protection Agency, Region 4
61 Forsyth Street, SW
Atlanta, Georgia 30303

Dear Ms. Fulmer and Mr. Richards:

SUBJECT: Facility Decommissioning Evaluation D-Area Coal Handling Houses and Associated Facilities (G-FDE-D-00057, Revision 0, August 24, 2021) Simple Model and Supporting Documentation

The U. S. Department of Energy (DOE) is submitting the subject Facility Decommissioning Evaluation (FDE) (hard copy and compact disk) for your review according to the Memorandum of Agreement for Achieving an Accelerated Cleanup Vision for the Savannah River Site. The Simple Model is the selected decommissioning model for D-Area Coal Handling Houses and Associated Facilities. The complete coal handling system is located south of the 484-D Powerhouse and was previously considered part of the Powerhouse infrastructure. To aid in decommissioning, the coal handling system has been decoupled from the Powerhouse and assigned individual building numbers that are not currently listed in the Federal Facility Agreement (FFA) Appendix K.1: D&D Facilities to be Decommissioned. The facilities will be added when FFA Appendix K.1 is updated in September 2021. Upon completion of decommissioning and the approval of the Decommissioning Project Final Report, the facilities will be moved from Appendix K.1 to Appendix K.2. To assist in your review of the FDE, several asbestos inspection reports and drawings are also enclosed. An overview and walk down are not currently scheduled for D-Area Coal Handling Houses and Associated Facilities. Please contact DOE if your agencies are interested in an overview and field visit.

Please submit your concurrence and/or comments within forty-five (45) days of receipt. The effort and time that the South Carolina Department of Health and Environmental Control and U. S. Environmental Protection Agency have given on the subject reports are greatly appreciated.

Ms. Susan Fulmer
Mr. Jon Richards

AUG 26 2021

2

Questions from you or your staff may be directed to me at (803) 952-8365, or the DOE Federal Project Director, Ms. Karen Adams, at (803) 952-7871.

Sincerely,

Brian T. Hennessey

Digitally signed by Brian T. Hennessey
Date: 2021.08.25 15:37:49 -04'00'

Brian T. Hennessey
SRS Remedial Project Manager
Infrastructure and Area Completion Division

IACD-21-162

Enclosures:

1. Facility Decommissioning Evaluation D-Area Coal Handling Houses and Associated Facilities (G-FDE-D-00057, Revision 0, August 24, 2021) Simple Model
2. Environmental Compliance & Area Completion Projects Baseline Asbestos Inspection Report of Building 484-21D (also includes Conveyor No. 3 and Conveyor No. 5) (Q-APG-D-00001, Revision 1, April 14, 2021)
3. Environmental Compliance & Area Completion Projects Baseline Asbestos Inspection Report of Building 484-24D (Q-APG-D-00002, Revision 2, April 14, 2021)
4. Environmental Compliance & Area Completion Projects Baseline Asbestos Inspection Report of Building 484-22D (also includes Conveyor No. 1, Conveyor No. 2, and Conveyor No. 4) (Q-APG-D-00003, Revision 1, April 14, 2021)
5. Environmental Compliance & Area Completion Projects Baseline Asbestos Inspection Report of Building 484-23D (aka SRS-PB-EX0032) (Q-APG-D-00042, Revision 1, April 14, 2021)
6. Environmental Compliance & Area Completion Projects Baseline Asbestos Inspection Report of Building SRS-PB-EX0033 (Q-APG-D-00043, Revision 0, February 25, 2021)
7. Environmental Compliance & Area Completion Projects Baseline Asbestos Inspection Report of Building SRS-PB-EX0035 (Q-APG-D-00045, Revision 0, March 9, 2021)
8. Drawing No. BPF202088-24, Stairway Layout for Track Hoppers and Car Shaker
9. Drawing No. W728733, Coal Handling Facility Conveyor, Transfer and Crusher House General Layout & Key Index Concrete and Steel
10. Drawing No. W703028, Powerhouse 484D-Coal Handling System Conveyors, Transfer and Crusher House General Layout – Coal Handling System Power
11. Drawing No. W735359, Building #484-D Reclaim Hopper and Conveyor No. 4 Lighting Plan, Instrument Arrangement, Electrical, Instrumentation

Ms. Susan Fulmer
Mr. Jon Richards

3

AUG 26 2021

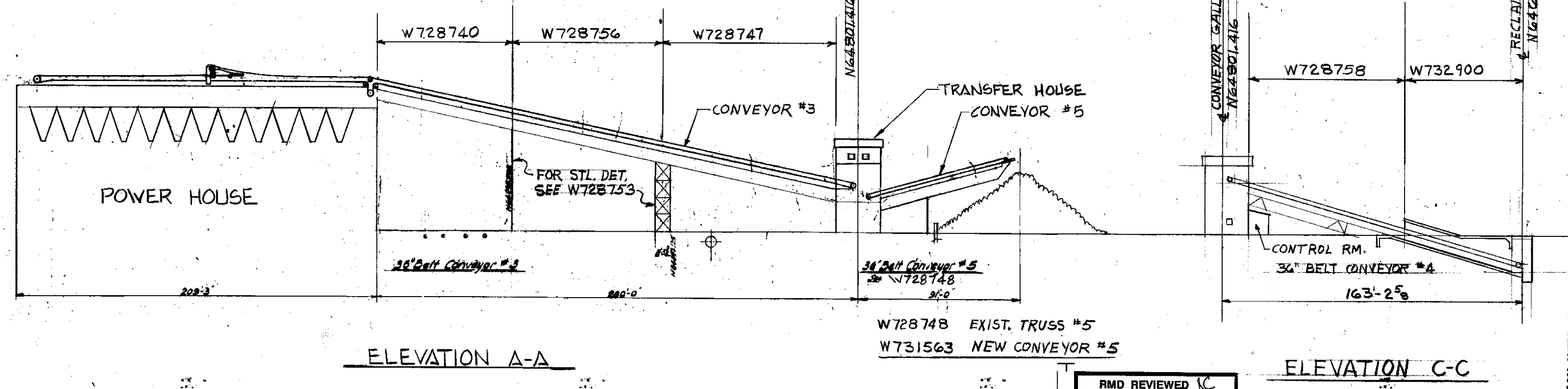
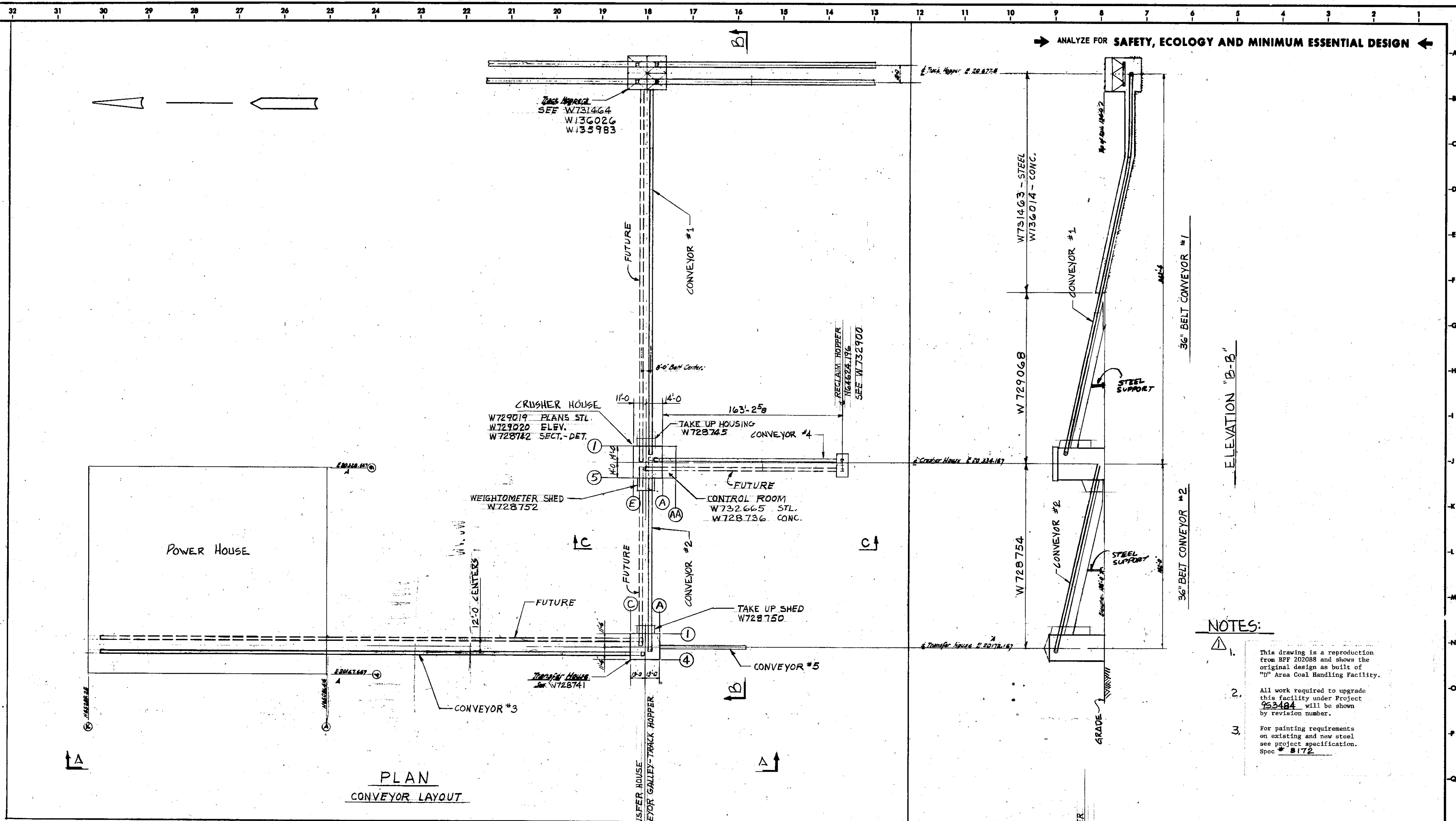
cc w/o encl:

J. Blalock, SCDHEC - Columbia
G. K. Taylor, SCDHEC - Columbia
S. French, SCDHEC - Columbia
M. Reece, SCDHEC - Columbia
T. R. Fuss, SCDHEC – Aiken Environmental Affairs Office
G. N. O’Quinn, SCDHEC – Aiken Environmental Affairs Office
B. Cameron, SCDHEC – Aiken Environmental Affairs Office
H. Herlong, SCDHEC – Aiken Environmental Affairs Office
R. H. Pope, EPA - Atlanta

cc w/encl:

D. Lloyd, EPA-Atlanta
K. L. Beatty, SCDHEC – Aiken Environmental Affairs Office

THE PHOTOGRAPHIC LINES ON THIS DRAWING MAY BE REMOVED WITH A NET ERASER



NOTES:

1. This drawing is a reproduction from SEP 2008 and shows the original design as built of "D" Area Coal Handling Facility.
2. All work required to upgrade this facility under Project 953484 will be shown by revision number.
3. For painting requirements on existing and new steel see project specification. Spec # B172.

BLDG.	PROJ.	DA	DWG. TYPE	LATEST
484-D	953484	D484	#3, #5	2

**SAVANNAH RIVER PLANT
COAL HANDLING FACILITY
CONV. TRANSFER & CRUSHER HOUSE
GENERAL LAYOUT & KEY INDEX
CONCRETE & STEEL**

THIS DOCUMENT CONTAINS INFORMATION RELATING TO
ACTIVITIES OF THE U.S. DEPARTMENT OF ENERGY NOT TO
BE REPRODUCED OR RELEASED WITHOUT PRIOR APPROVAL

Reproduced From GPF 20088 SH. 3

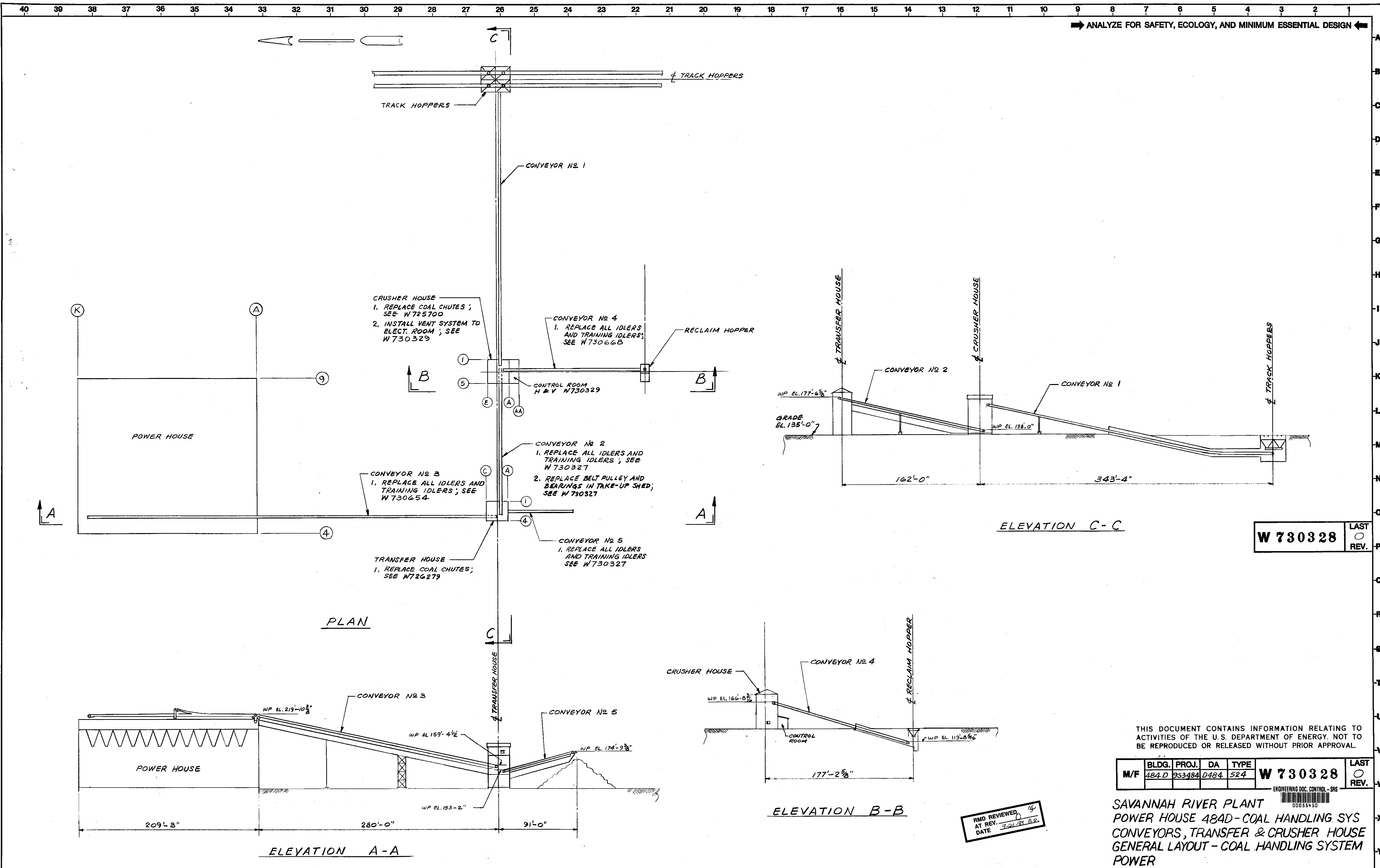
PROJ. NO.	REVISIONS	REVISED BY	CHECKED BY	APPROVED BY	PROJ. NO.	REVISIONS	REVISED BY	CHECKED BY	APPROVED BY	PROJ. NO.	REVISIONS	REVISED BY	CHECKED BY	APPROVED BY	PROJ. NO.	REVISIONS	REVISED BY	CHECKED BY	APPROVED BY	

REFERENCE DRAWINGS	INDEX	PROJECT	SCALE	DATE
W73032B POWER	W72922B CONV. #1	953484	1" = 40'	SEP 9 1982
W731563 NEW CONV.	W728754 CONV. #2			
W729019 CRUSHER	W728754 CONV. #3			
W72922B CONV.	W728754 CONV. #4			
W728741 TRANSFER	W728748 CONV. #5			
W728748 CONV.	W728748 CONV. #5			
W73032B POWER	W728748 CONV. #5			
W73032B POWER	W728748 CONV. #5			

APPROVED INITIAL: *[Signature]*
 CONSTR. RELEASE: *[Signature]*
 APPROVED FINAL: *[Signature]*

E. I. DU PONT DE NEMOURS & COMPANY
 WILMINGTON, DELAWARE
ENGINEERING DEPARTMENT
W 728733

ORIGINAL DRAWING MADE ON DU PONT POLYESTER FILM



ANALYZE FOR SAFETY, ECOLOGY, AND MINIMUM ESSENTIAL DESIGN

W 730328
 LAST REV.

THIS DOCUMENT CONTAINS INFORMATION RELATING TO ACTIVITIES OF THE U.S. DEPARTMENT OF ENERGY. NOT TO BE REPRODUCED OR RELEASED WITHOUT PRIOR APPROVAL.

M/F	BLDG.	PROJ.	DA	TYPE	W 730328	LAST REV.
	484.D	953484	D484	524		

SAVANNAH RIVER PLANT
 POWER HOUSE 484D-COAL HANDLING SYS
 CONVEYORS, TRANSFER & CRUSHER HOUSE
 GENERAL LAYOUT - COAL HANDLING SYSTEM
 POWER

REVIEWED AT REV. DATE

PROJ. NO.	REVISION	RVSD	CHKD	APPD	DATE	PROJ. NO.	REVISION	RVSD	CHKD	APPD	DATE	PROJ. NO.	REVISION	RVSD	CHKD	APPD	DATE	STANDARDS	REFERENCE DRAWINGS	PROJECT	SCALE	DATE
																			W730327	953484	1" = 4'-0"	11-23-82
																			W730328			11-23-82
																			W730654			11-23-82
																			W730668			11-23-82
																			W726279			11-23-82

THIS DRAWING HAS BEEN FURNISHED BY E. I. DU PONT DE NEMOURS & CO. THE INFORMATION AND KNOW-HOW THEREON MAY NOT BE USED NOR THE DRAWING REPRODUCED WITHOUT THE WRITTEN PERMISSION OF DU PONT. ALL REPRODUCTIONS IN WHOLE OR IN PART, INCLUDING VENDOR'S SHOP DRAWINGS, SHALL BEAR OR REFER TO THIS STAMP.

E. I. DU PONT DE NEMOURS & CO., INC.
 WILMINGTON, DELAWARE
 ENGINEERING DEPARTMENT
 W 730328

