

ENVIRONMENTAL COMPLIANCE & AREA COMPLETION PROJECTS (EC&ACP) STANDARD OPERATING PROCEDURES, VOL. I

Manual: C3
Procedure: ER-IDS-019-009
Revision: 7
Effective Date: 5/09/19
Type-Class: Form
Page: 1 of 3

F-AREA RETENTION BASIN (BLDG. 281-3F) FIELD INSPECTION CHECKLIST

WORKING COPY

This document is a Working Copy. Prior to start of work, verify this is the latest revision per the Procedure Index.

Charles P. Carter

Verified By

04/19/2021

Date

CAUTION

The Inspector shall IMMEDIATELY notify the Post-Closure Manager and Environmental Compliance Authority if there has been a breach or compromise of the institutional controls of this waste unit. This notification shall be in accordance with Savannah River Site post-closure inspection procedures.

NOTE

1. Manual C3, ER-SOP-019, Waste Unit Inspection and Maintenance, shall be referred to for inspection details.
2. Monitoring wells associated with this waste unit are maintained in accordance with EC&ACP Monitoring Well Procedures.
3. Steps in this checklist may be completed concurrently or in any order.

SCHEDULED

UNSCHEDULED

A = Satisfactory		A or X	Observation/Corrective Action Taken
X = Unsatisfactory (Explanation required)			
1.	Verify roads to waste unit are accessible.	A	
2.	Verify that the waste unit signs (4) and underground piping signs (12) are in acceptable condition, have the correct information and are legible from a distance of 25 feet.	A	

F-Area Retention Basin (Bldg. 281-3F) Field Inspection Checklist

Manual: C3
 Procedure: ER-IDS-019-009
 Revision: 7
 Page: 2 of 3

SCHEDULED UNSCHEDULED

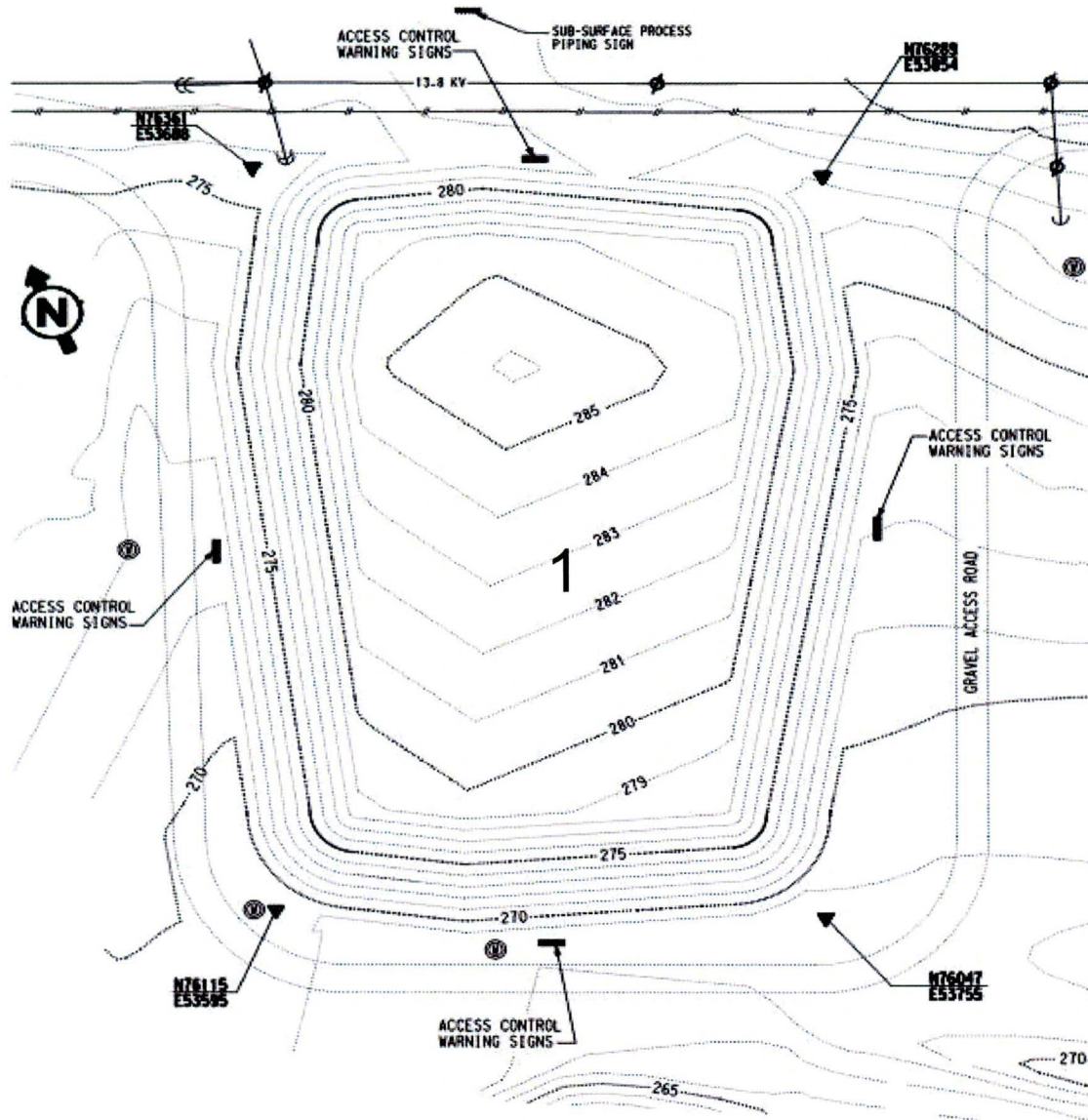
A = Satisfactory X = Unsatisfactory (Explanation required)	A or X	Observation/Corrective Action Taken
3. Verify that there is no excavating, digging or construction activity on the soil cover or over the subsurface process piping (identified by signs).	A	
4. Verify that no woody vegetation is growing on the soil cover. Remove or identify as needed.	A	
5. Visually check vegetative cover for grass density with no bare spots more than 3 feet by 3 feet in area. The height of the vegetation should not impair the visual inspection of the soil cover. This will be determined by the Inspector.	A	
6. Check the soil cover for signs of erosion or depressions (subsidence).	A	
7. Check for signs of burrowing animals.	X	Active Ant Mounds on Soil Cover See Map Note: 1 Reference Maintenance Register: PC-2021-00029
8. Visually inspect the concrete markers (bench marks) to ensure they are visible and not damaged.	A	
9. Other NO FURTHER ENTRIES		

CPC 04/19/2021

Inspected By		
Charles P. Carter <i>(Print Name)</i>	<i>Charles P. Carter</i> <i>(Signature)</i>	04/19/2021 <i>(Date)</i>

Review By Post-Closure Manager		
George W. Joyner <i>(Print Name)</i>	<i>George W. Joyner</i> <i>(Signature)</i>	4/21/21 <i>(Date)</i>

MAP F-AREA RETENTION BASIN (BLDG. 281-3F)



NOTES: 1=Active Ant Mounds on Soil Cover. Applied 2.0 lbs of Extinguish Ant Bait.

NO ENTRIES THIS PAGE

POST CLOSURE MAINTENANCE REGISTER

Index Number

Unit Name

73 F-AREA RETENTION BASIN - 281-3F

Watershed FOURMILE BRANCH

AHA # AHA-ER-5534
Work Order # NA
Work Group POST CLOSURE MAINTENANCE
Priority Medium
RCRA NO

Maintenance Number	PC-2021-00029	Maintenance Status	Complete
Inspection Date	4/19/2021	Chemical Type	Pesticide
Completion Date	4/19/2021	Chemical Name	Extinguish
		Amount Used	2.0 Pounds

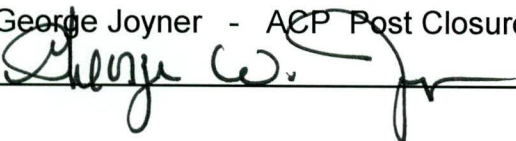
Description Of Maintenance Item
Active ant mounds on waste unit

Maintenance Item Corrected
Applied Extinguish pesticide

Notes New observation.

Approved by : George Joyner - ACP Post Closure Manager

Signature



Approval date :

4/21/21