

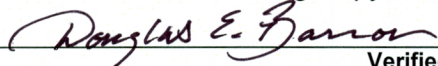
ENVIRONMENTAL COMPLIANCE & AREA COMPLETION PROJECTS (EC&ACP) STANDARD OPERATING PROCEDURES, VOL. I

Manual: C3
 Procedure: ER-IDS-019-076
 Revision: 1
 Effective Date: 03/20/2017
 Type-Class: Form
 Page: 1 of 3

OUTFALL C-03 C-AREA OPERABLE UNIT FIELD INSPECTION CHECKLIST

WORKING COPY

This document is a Working Copy. Prior to start of work, verify this is the latest revision per the Procedure Index.



 Verified By

 Date

CAUTION

The Inspector shall IMMEDIATELY notify the Post-Closure Manager and Environmental Compliance Authority if there has been a breach or compromise of the institutional controls of this waste unit. This notification shall be in accordance with Savannah River Site post-closure inspection procedures.

NOTE

1. Manual C3, Vol. 1, ER-SOP-019, Waste Unit Inspection and Maintenance, shall be referred to for inspection details.
2. Monitoring wells associated with this waste unit are maintained in accordance with EC&ACP monitoring well procedures.
3. Steps in this checklist may be completed concurrently or in any order.

SCHEDULED

 UNSCHEDULED

A = Satisfactory	A or X	Observation/Corrective Action Taken
X = Unsatisfactory (Explanation required)		
1. Verify roads are accessible.	A	
2. Verify land-use control boundary signs (5) are in acceptable condition, have the correct information, and are legible from a distance of 25 feet.	A	

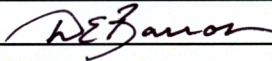
Outfall C-03 C-Area Operable Unit Field Inspection Checklist

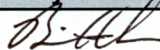
Manual: C3
 Procedure: ER-IDS-019-076
 Revision: 1
 Page: 2 of 3

SCHEDULED

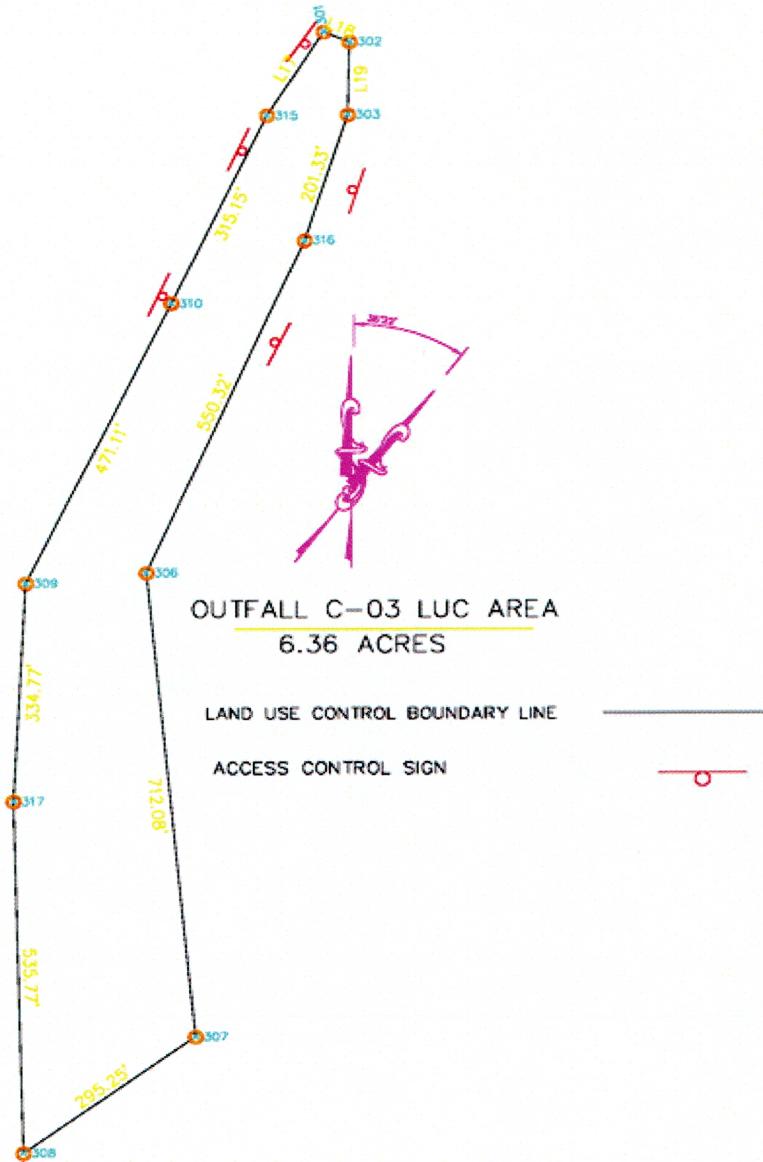
UNSCHEDULED

A = Satisfactory X = Unsatisfactory (Explanation required)		A or X	Observation/Corrective Action Taken
3.	Verify there are no unauthorized excavation, digging, or construction activities within the land-use control boundaries.	A	
4.	Other None	A	

Inspected By		
Eric Barron <i>(Print Name)</i>	 <i>(Signature)</i>	03/07/2024 <i>(Date)</i>

Reviewed By Post-Closure Manager		
Brian Hanshew <i>(Print Name)</i>	 <i>(Signature)</i>	3/20/2024 <i>(Date)</i>

C-Area Operable Unit Outfall C-03



NOTES: NONE
