

**ENVIRONMENTAL COMPLIANCE & AREA COMPLETION PROJECTS (EC&ACP) STANDARD
OPERATING PROCEDURES, VOL. I**
Manual: C3
Procedure: ER-IDS-019-035
Revision: 4
Effective Date: 12/21/2021
Type-Class: Checklist
Page: 1 of 3
**P REACTOR SEEPAGE BASIN OPERABLE UNIT (BLDGS. 904-61G, 904-62G AND 904-63G) FIELD
INSPECTION CHECKLIST**
WORKING COPY

This document is a Working Copy. Prior to start of work, verify this is the latest revision per the Procedure Index.

Donny Sahn

 Verified By

12/18/2023

 Date

CAUTION

The Inspector is required to IMMEDIATELY notify the Post-Closure Manager and Environmental Compliance Authority if there has been a breach or compromise of the institutional controls of this waste unit. This notification is required to be in accordance with Savannah River Site post-closure inspection procedures.

NOTE

1. Manual C3, Volume I, Procedure ER-SOP-019, Waste Unit and IOU Inspection and Maintenance, is referenced to for inspection details.
2. Monitoring wells associated with this waste unit are maintained in accordance with Environmental Compliance & Area Completion Projects Monitoring Well Procedures.
3. Steps in this checklist may be completed concurrently or in any order.

SCHEDULED

UNSCHEDULED

A = Satisfactory		A or X	Observation/Corrective Action Taken
X = Unsatisfactory (Explanation required)			
1.	VERIFY roads are accessible.	A	
2.	VERIFY that the waste unit signs (8) are in acceptable condition, have the correct information, and are legible from a distance of 25 feet.	A	

P Reactor Seepage Basin Operable Unit (Bldgs. 904-61G, 904-62G and 904-63G) Field Inspection Checklist

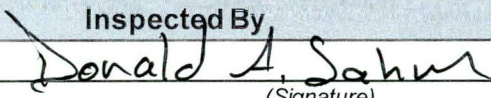
Manual: C3
 Procedure: ER-IDS-019-035
 Revision: 4
 Page: 2 of 3

SCHEDULED

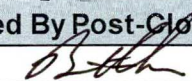
UNSCHEDULED

A = Satisfactory	A or X	Observation/Corrective Action Taken
X = Unsatisfactory (Explanation required)		
3. VERIFY there is no unauthorized digging, excavation, or construction activities on the soil cover.	A	
4. CHECK the integrity of drainage ditches for the presence of excessive erosion, sediment buildup, and any debris restricting water flow.	A	
5. VERIFY that no woody vegetation is growing on the soil cover, AND REMOVE OR IDENTIFY as needed.	A	
6. VISUALLY CHECK vegetative cover for grass density with no bare spots more than 3 feet by 3 feet in area. (The height of the vegetation should not impair the visual inspection of the soil cover. This will be determined by the Inspector.)	A	
7. CHECK the closure cover for signs of erosion or depressions (subsidence).	A	
8. CHECK for signs of burrowing animals.	X	Carry over item: Hogs Rooting on soil cover. See map note:1 Reference Maintenance Register: PC-2019-00108
9. VISUALLY PERFORM a condition check of the survey benchmarks for damage and visibility.	A	
10. Other.	NONE	

Inspected By

Donald A. Sahn (Print Name)	 (Signature)	12/18/2023 (Date)
--------------------------------	---	----------------------

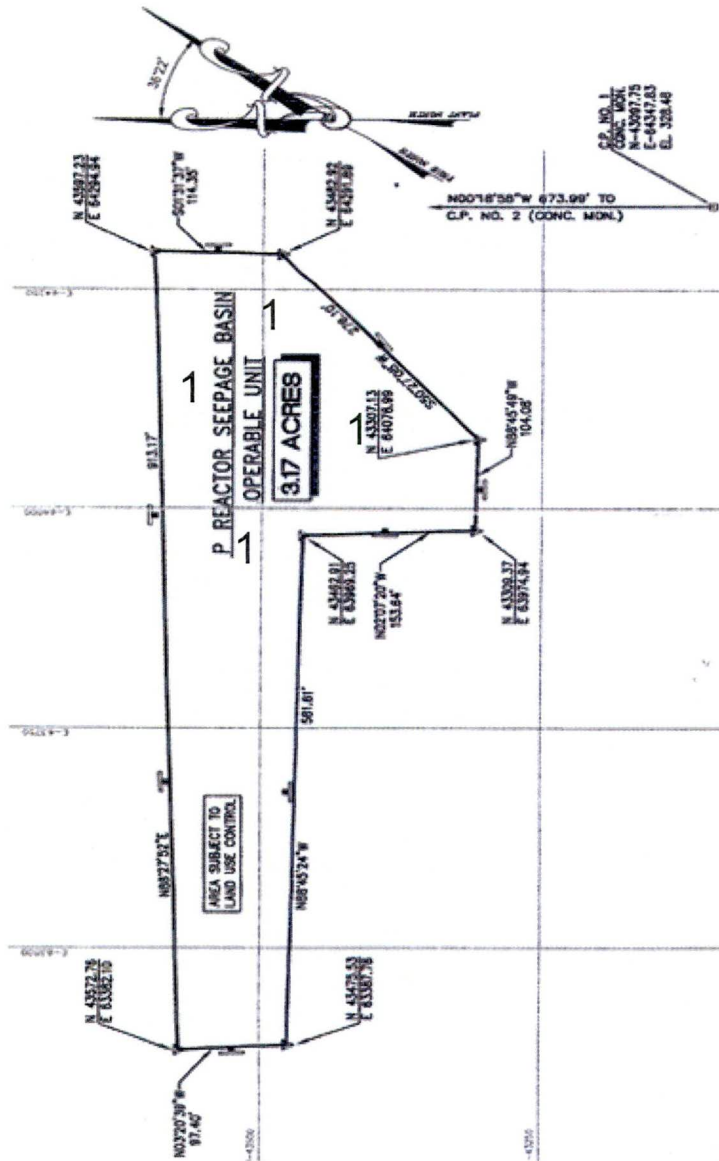
Reviewed By Post-Closure Manager

Brian Hanshew (Print Name)	 (Signature)	12/18/2023 (Date)
-------------------------------	---	----------------------

P Reactor Seepage Basin Operable Unit (Bldgs. 904-61G, 904-62G and 904-63G) Field Inspection Checklist

Manual: C3
 Procedure: ER-IDS-019-035
 Revision: 4
 Page: 3 of 3

P REACTOR SEEPAGE BASIN (BLDGS. 904-61G,904-62G AND 904-63G)



NOTES: 1=Carry over item: Hogs Rooting on soil cover. The USFS will repair with topsoil, grass seed, and wheat straw.

NO FURTHER ENTRIES

DAS 12/18/2023