

**ENVIRONMENTAL COMPLIANCE & AREA COMPLETION PROJECTS (EC&ACP) STANDARD  
OPERATING PROCEDURES, VOL. I**
**Manual: C3**  
**Procedure: ER-IDS-019-047**  
**Revision: 4**  
**Effective Date: 06/02/2016**  
**Type-Class: Form**  
**Page: 1 of 7**
**TAIL PORTION OF LOWER THREE RUNS (LTR) INTEGRATED OPERABLE UNIT (IOU)  
PATTERSON MILL ROAD TO SAVANNAH RIVER FIELD INSPECTION CHECKLIST**
**WORKING COPY**

This document is a Working Copy. Prior to start of work, verify this is the latest revision per the Procedure Index.



Verified By

3-29-18

Date

**CAUTION**


The Inspector shall IMMEDIATELY notify the Post-Closure Manager and Environmental Compliance Authority if there has been a breach or compromise of the institutional controls of this waste unit. This notification shall be in accordance with Savannah River Site post-closure inspection procedures.

**NOTE**

1. Manual C3, ER-SOP-044, *ACP Integrated Operable Unit (IOU) Field Walkdown and Maintenance (U)*, may be referred to for Inspection Details, as applicable.
2. For inspection frequency and Monument coordinates, table 2 and table E-1 in SRNS-RP-2013-00046 shall be utilized.
3. Steps in this checklist may be completed concurrently and in any order.
4. LTR – Lower Three Runs, IOU – Integrator Operable Unit.


**SCHEDULED**

**UNSCHEDULED**

<b>A = Satisfactory</b> <b>X = Unsatisfactory (Explanation required)</b>	<b>A or X</b>	<b>Observation/Corrective Action Taken</b>
1. Verify that the signs at the Land use control boundary, from Patterson Mill Road to Savannah River (see pages 3 to 7) are in acceptable condition, have the correct information, and are legible.		Incorrect phone number on signs. SEE map note ①. REF. MAINT. REGISTER IOU - 2018-00002

Tail Portion of Lower Three Runs (LTR) Integrated Operable Unit (IOU) Patterson Mill Road to Savannah River Field Inspection Checklist

Manual: C3  
 Procedure: ER-IDS-019-047  
 Revision: 4  
 Page: 2 of 7

SCHEDULED

UNSCHEDULED

A = Satisfactory X = Unsatisfactory (Explanation required)		A or X	Observation/Corrective Action Taken
2.	Verify that the fences are in acceptable condition.	X	BROKEN FENCES IN MULTIPLE SPOTS SEE MAP NOTE ②. REF. MAINT REGISTER. IOU-2018-00003
3.	Verify that there are no unauthorized structures (e.g., deer stand, rope swings) on Department of Energy property.	A	
4.	Document and provide appropriate notification of the location of any evidence of trespassing within the LUC/Site Boundaries.	A	
5.	Other <u>NO FURTHER ENTRIES</u>		<u>CPL 3-29-18</u>

Inspected By

<u>CHARLES P. CARTER</u> (Print Name)	<u>Charles P. Carter</u> (Signature)	<u>3-29-18</u> (Date)
--	---	--------------------------

Review By Post Closure Manager

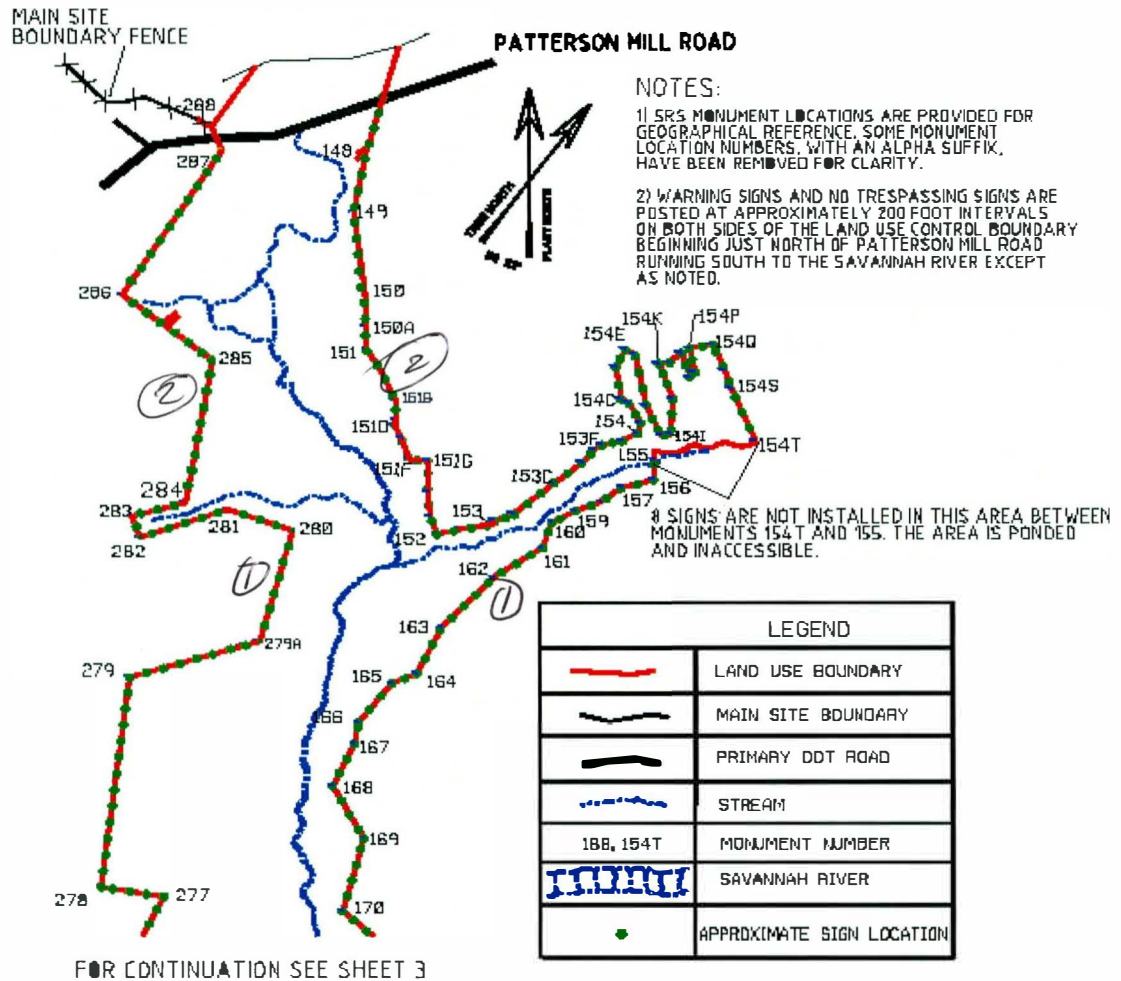
<u>George W. Joyner</u> (Print Name)	<u>George W. Joyner</u> (Signature)	<u>5/8/18</u> (Date)
---	--	-------------------------

Tail Portion of Lower Three Runs (LTR) Integrated Operable Unit (IOU) Patterson Mill Road to Savannah River Field Inspection Checklist

Manual: C3  
 Procedure: ER-IDS-019-047  
 Revision: 4  
 Page: 3 of 7

Tail Portion of LTR IOU from Patterson Mill Road to Savannah River Map

Page 1 of 5



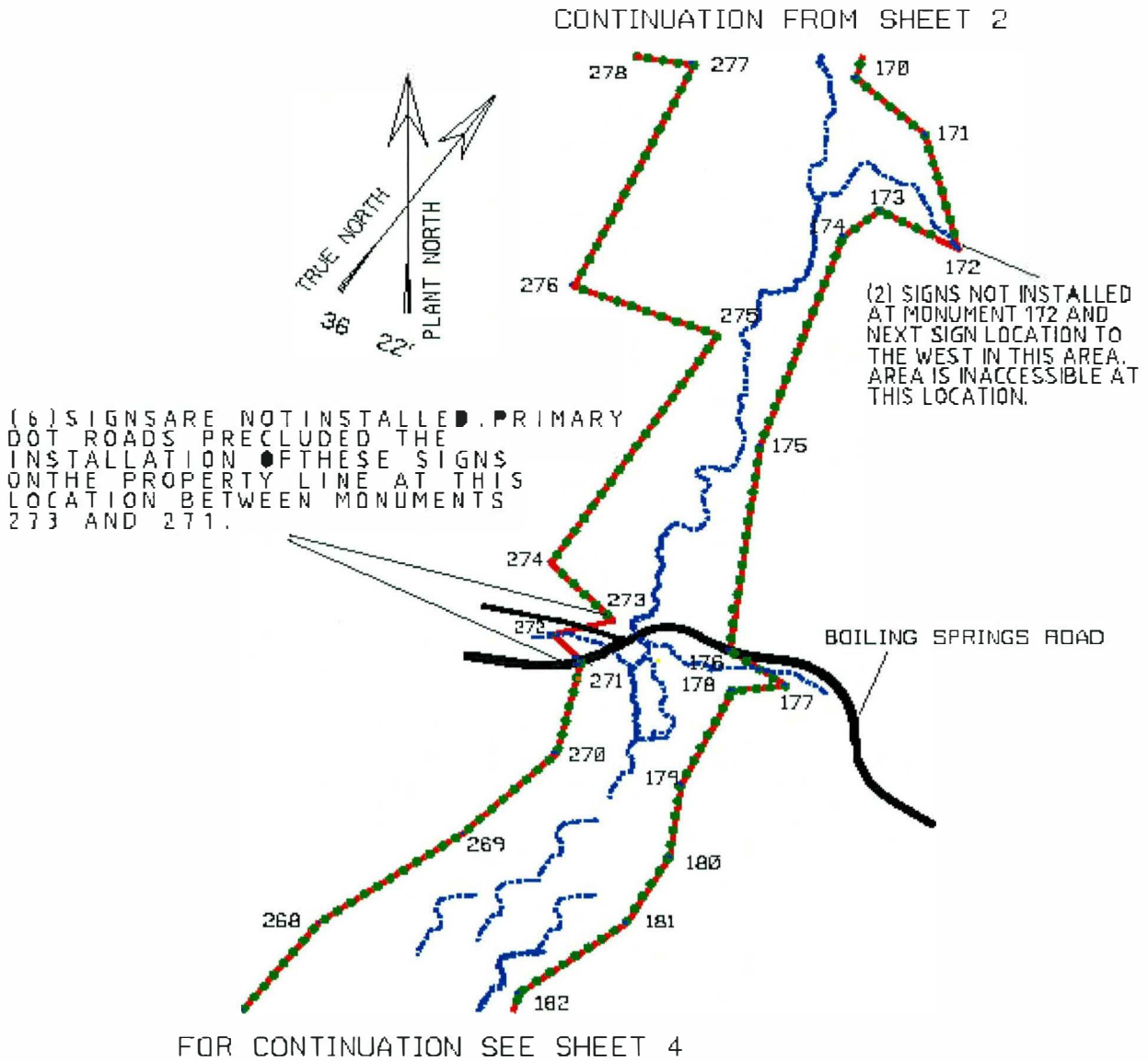
NOTES: ① - IN CORRECT PHONE NUMBER ON SIGNS. REPLACED INCORRECT PHONE NUMBER WITH THE CORRECT ONE. IN REPAIRS TO THE FENCE. THE SIGNS + FENCES WERE REPAIRED ON BOTH SIDES FROM PATTERSON MILL ROAD TO THE SAVANNAH RIVER.

CPL 329-18

Tail Portion of Lower Three Runs (LTR) Integrated Operable Unit (IOU) Patterson Mill Road to Savannah River Field Inspection Checklist

Manual: C3  
Procedure: ER-IDS-019-047  
Revision: 4  
Page: 4 of 7

Tail Portion of LTR IOU from Patterson Mill Road to Savannah River Map  
Page 2 of 5



Notes: SEE P. 3 OF 7

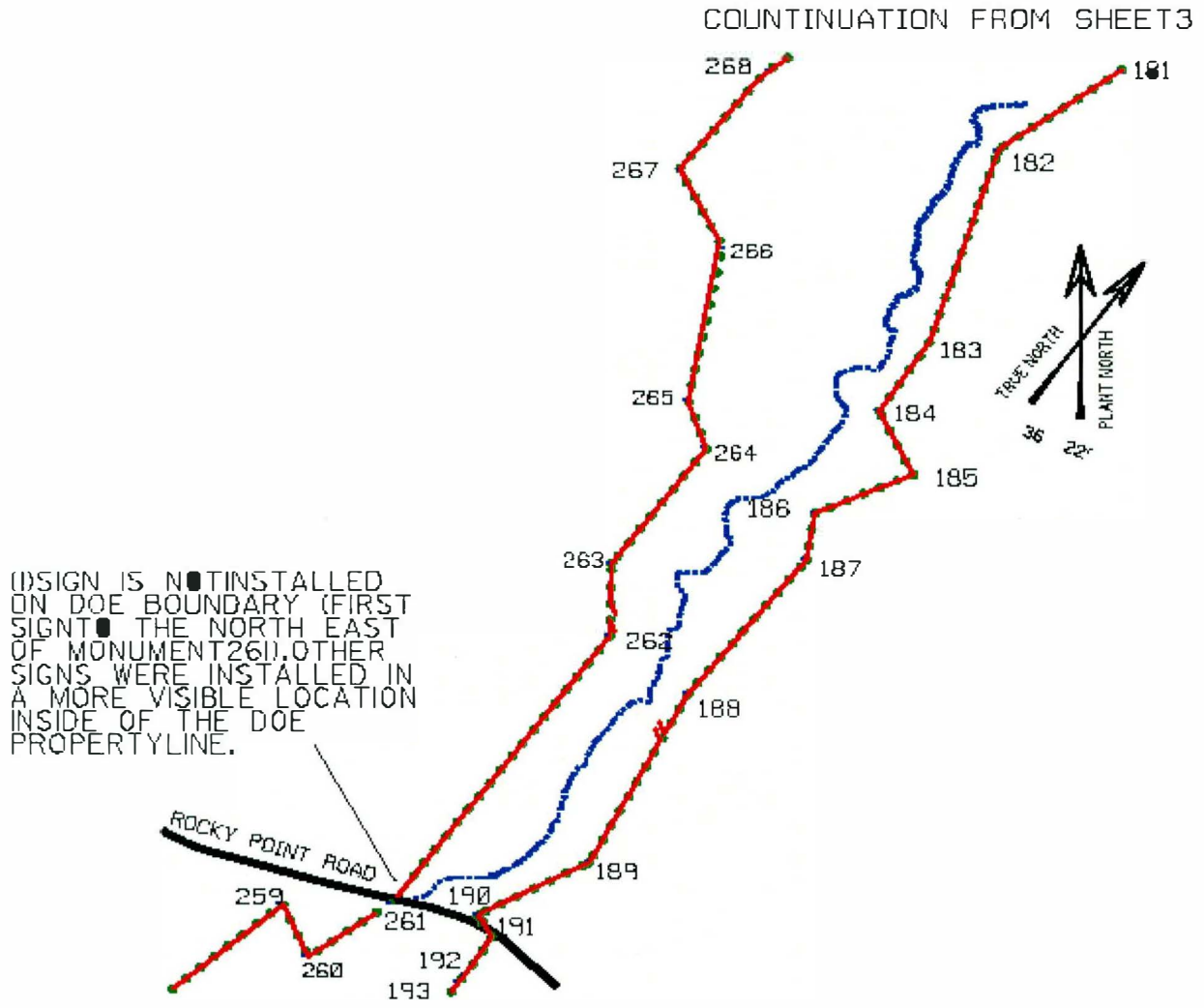
NO FURTHER ENTRIES

CPC 3-29-18

Tail Portion of Lower Three Runs (LTR) Integrated Operable Unit (IOU) Patterson Mill Road to Savannah River Field Inspection Checklist

Manual: C3  
Procedure: ER-IDS-019-047  
Revision: 4  
Page: 5 of 7

Tail Portion of LTR IOU from Patterson Mill Road to Savannah River Map  
Page 3 of 5



Notes: SEE P. 3 OF 7

---

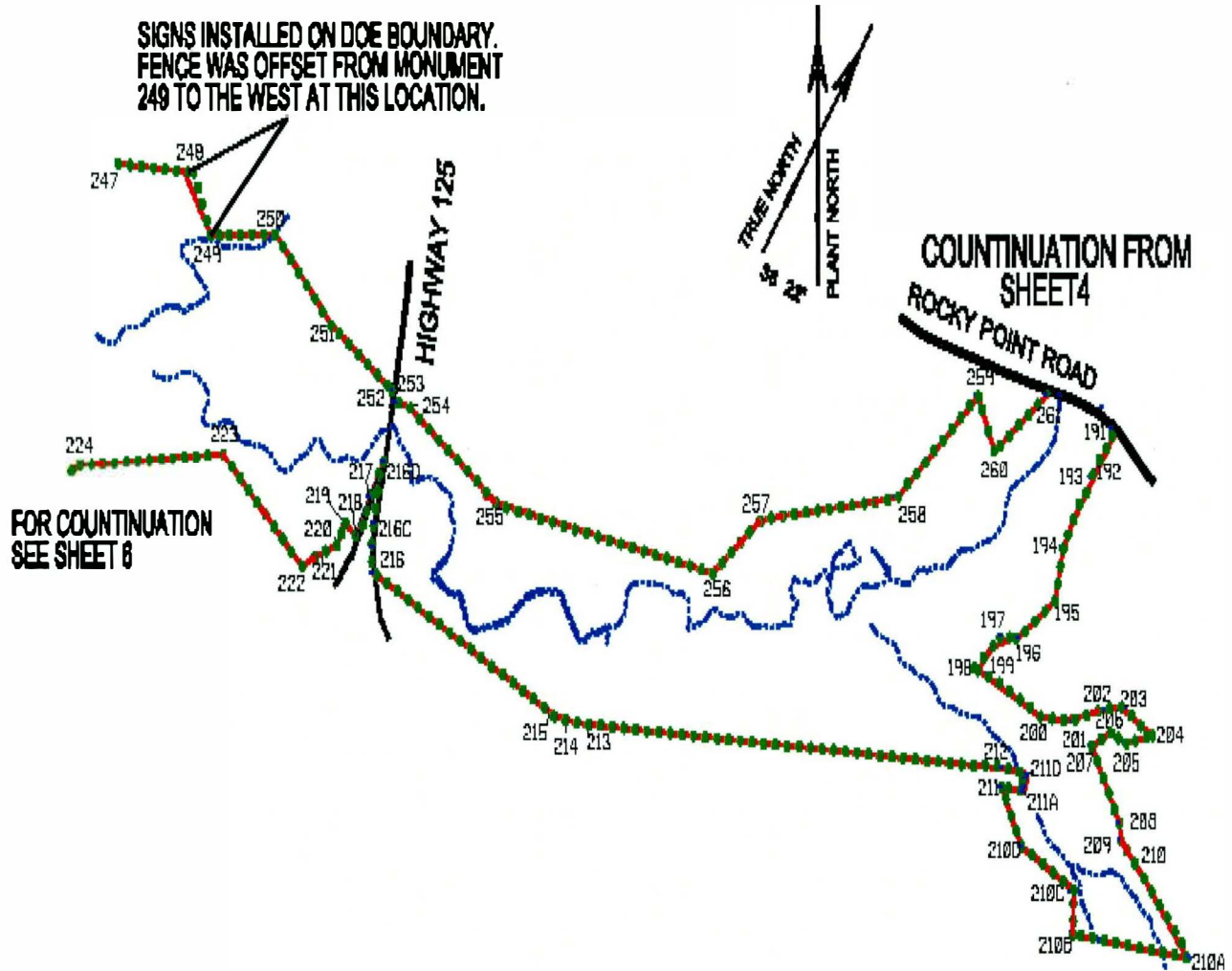
NO FURTHER ENTRIES

CPL 3-29-18

Tail Portion of Lower Three Runs (LTR) Integrated Operable Unit (IOU) Patterson Mill Road to Savannah River Field Inspection Checklist

Manual: C3  
Procedure: ER-IDS-019-047  
Revision: 4  
Page: 6 of 7

Tail Portion of LTR IOU from Patterson Mill Road to Savannah River Map  
Page 4 of 5



Notes: SEE P. 3 OF 7

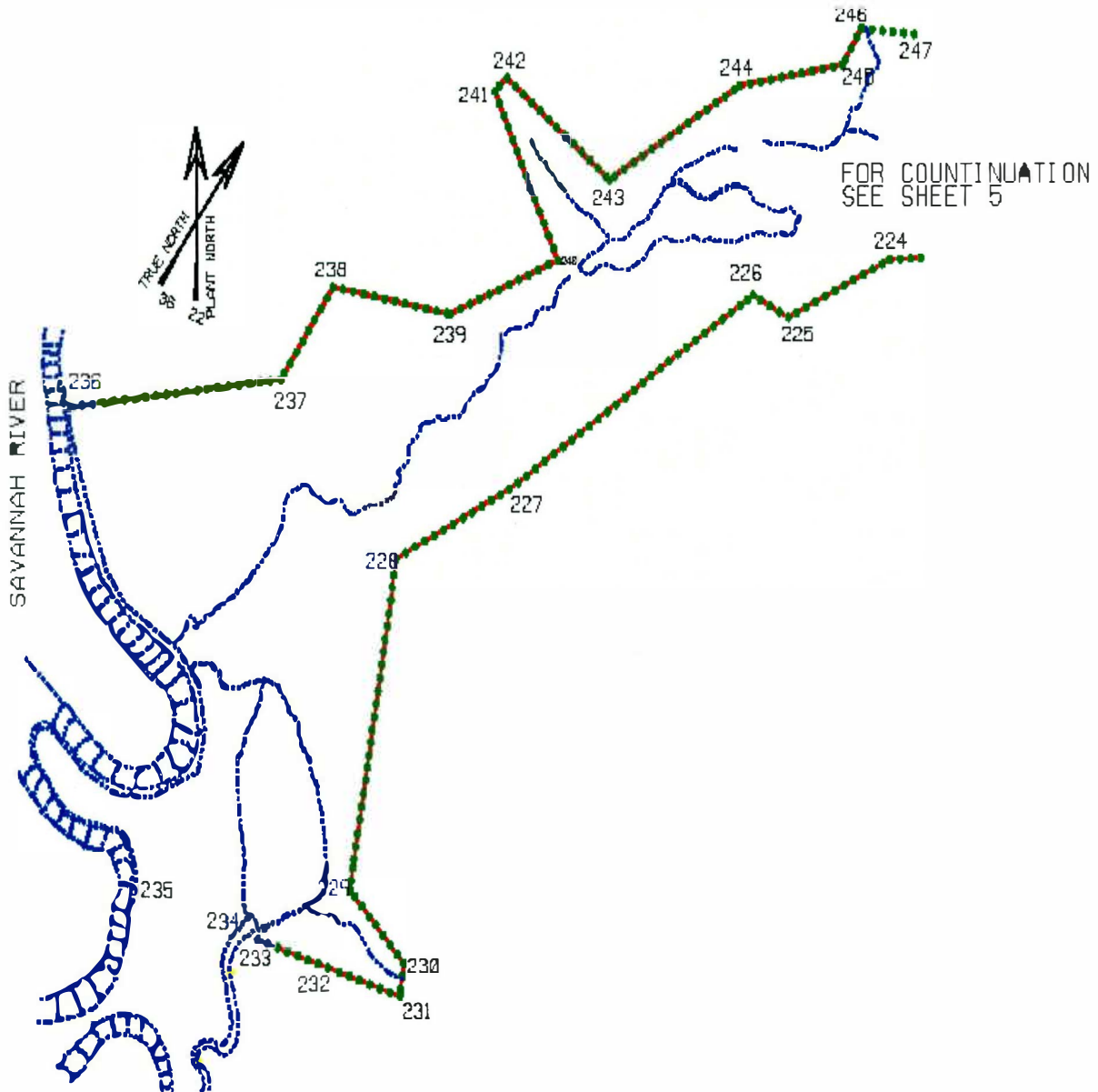
NO FURTHER ENTRIES

CPC 3-29-18

Tail Portion of Lower Three Runs (LTR) Integrated Operable Unit (IOU) Patterson Mill Road to Savannah River Field Inspection Checklist

Manual: C3  
Procedure: ER-IDS-019-047  
Revision: 4  
Page: 7 of 7

Tail Portion of LTR IOU from Patterson Mill Road to Savannah River Map  
Page 5 of 5



Notes: SEE P. 3 OF 7

NO FURTHER ENTRIES

CPC 3-29-18

# INTEGRATED OPERABLE UNIT (IOU) MAINTENANCE REGISTER

**Location**
**Unit Name**

1-5 TAIL PORTION OF LTR IOU FROM PATTERSON MILL ROAD TO SAVANNAH RIVER

**Watershed**

LOWER THREE RUNS

AHA # ER-3425  
 Work Order # N/A  
 Work Group POST CLOSURE  
 Priority Medium  
 RCRA NO

<b>Maintenance Number</b>	IOU-2018-00002	<b>Maintenance Status</b>	Complete
Inspection Date	1/8/2018	<b>Chemical Type</b>	NA
Completion Date	3/29/2018	<b>Chemical Name</b>	
		<b>Amount Used</b>	

**Description Of Maintenance Item**

Incorrect Phone Number on IOU signs

**Maintenance Item Corrected**

Installed New Phone Label on IOU signs East and West sides of land use boundary of Lower Three Runs Tail

**Notes** New Observation

Approved by : George Joyner - ACP Post Closure Manager

Signature



Approval date :

5/8/18

# INTEGRATED OPERABLE UNIT (IOU) MAINTENANCE REGISTER

**Location**
**Unit Name**

1-5 TAIL PORTION OF LTR IOU FROM PATTERSON MILL ROAD TO SAVANNAH RIVER

**Watershed**

LOWER THREE RUNS

AHA # ER-3425  
 Work Order # N/A  
 Work Group POST CLOSURE  
 Priority Medium  
 RCRA NO

**Maintenance Number** IOU-2018-00003      **Maintenance Status** Complete

Inspection Date 1/8/2018      **Chemical Type** NA

Completion Date 3/29/2018      **Chemical Name**  
 Amount Used

**Description Of Maintenance Item**

Broken fencing in multiple spots/locations

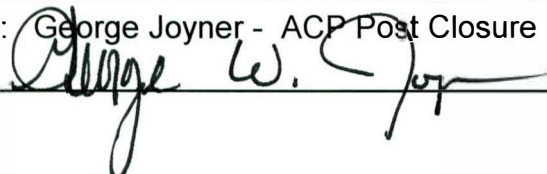
**Maintenance Item Corrected**

USFS repaired fencing in all locations on the East and West side of the Lower Three Runs Tail Portion

**Notes** New Observation

Approved by : George Joyner - ACP Post Closure Manager

Signature



Approval date :

5/8/18