

**ENVIRONMENTAL COMPLIANCE & AREA COMPLETION PROJECTS (EC&ACP) STANDARD OPERATING PROCEDURES, VOL. I**

**Manual:** C3  
**Procedure:** ER-IDS-019-020  
**Revision:** 6  
**Effective Date:** 11/23/2020  
**Type-Class:** Checklist  
**Page:** 1 of 4

**METALLURGICAL LABORATORY HAZARDOUS WASTE MANAGEMENT FACILITY (HWMF) POST CLOSURE FIELD INSPECTION CHECKLIST**

**WORKING COPY**

This document is a Working Copy. Prior to start of work, verify this is the latest revision per the Procedure Index.

*Charles P. Carter*

Verified By

11/14/2022

Date

**CAUTION**

The Inspector will IMMEDIATELY notify the Post-Closure Manager and Environmental Compliance Authority if there has been a breach or compromise of the institutional controls of this waste unit. This notification will be in accordance with Savannah River Site post-closure inspection procedures.

**NOTE**

1. Manual C3, Volume 1, Procedure ER-SOP-019, Waste Unit and IOU Inspection and Maintenance, will be referred to for inspection details.
2. Monitoring wells associated with this waste unit are maintained in accordance with EC&ACP monitoring well procedures located at ACP Homepage.
3. Steps in this checklist may be completed concurrently or in any order.

**SCHEDULED**

**UNSCHEDULED**

A = Satisfactory X = Unsatisfactory (Explanation required)		A or X	Observation/Corrective Action Taken
1.	VERIFY roads to waste unit are accessible.	A	
2.	VERIFY signs on the fence are in acceptable condition and are legible from a distance of 25 feet. Signs must include "Danger Unauthorized Personnel Keep Out" and include Post Closure Manager and Savannah River Site Operations Center contact information.	A	

**Metallurgical Laboratory Hazardous Waste Management Facility (HWMF) Post Closure Field  
Inspection Checklist**
**Manual: C3**  
**Procedure: ER-IDS-019-020**  
**Revision: 6**  
**Page: 2 of 4**
 **SCHEDULED**
 **UNSCHEDULED**

A = Satisfactory X = Unsatisfactory (Explanation required)	A or X	Observation/Corrective Action Taken
3.	<b>VERIFY</b> fence is in good condition (e.g., shows no signs of serious wear, no vegetative growth) and unattended gates are locked.	A
4.	<b>CHECK</b> the soil cover and side slopes for signs of erosion, depression (subsidence) and evidence of burrowing animals.	A
5.	<b>CHECK</b> the integrity of drainage ditches for the presence of excessive erosion, sediment buildup, and any debris restricting water flow.	A
6.	<b>VERIFY</b> that no woody vegetation is growing on the soil cover, <b>AND</b>  <b>REMOVE OR IDENTIFY</b> as needed.	A
7.	<b>VISUALLY CHECK</b> vegetative cover for grass density with no bare spots more than 3 feet by 3 feet in area. The height of the vegetation should not impair visual inspection of the soil cover. This will be determined by the Inspector.	X Grass on side slopes thinning/dying See Map Note: 1 Reference Maintenance Register PC-2022-00128
8.	<b>VISUALLY PERFORM</b> a condition check of the survey benchmarks for damage and visibility.	A
9.	<b>VERIFY</b> annual topographic/subsidence survey has been performed by end of June for current year, <b>AND</b>  <b>VERIFY</b> copies of survey results are in EC&ACP Document Control Center.	A Completed 04/11/2022 SRNS-J2000-2022-00344

**Metallurgical Laboratory Hazardous Waste Management Facility (HWMF) Post Closure Field Inspection Checklist**

Manual: C3  
 Procedure: ER-IDS-019-020  
 Revision: 6  
 Page: 3 of 4

SCHEDULED                       UNSCHEDULED

	A = Satisfactory X = Unsatisfactory (Explanation required)	A or X	Observation/Corrective Action Taken
10.	INSPECT A-08 Outfall Diversion Ditch for the presence of erosion and debris restricting water flow.	A	
11.	Other		

~~NO FURTHER ENTRIES~~

CPC 11/14/2022

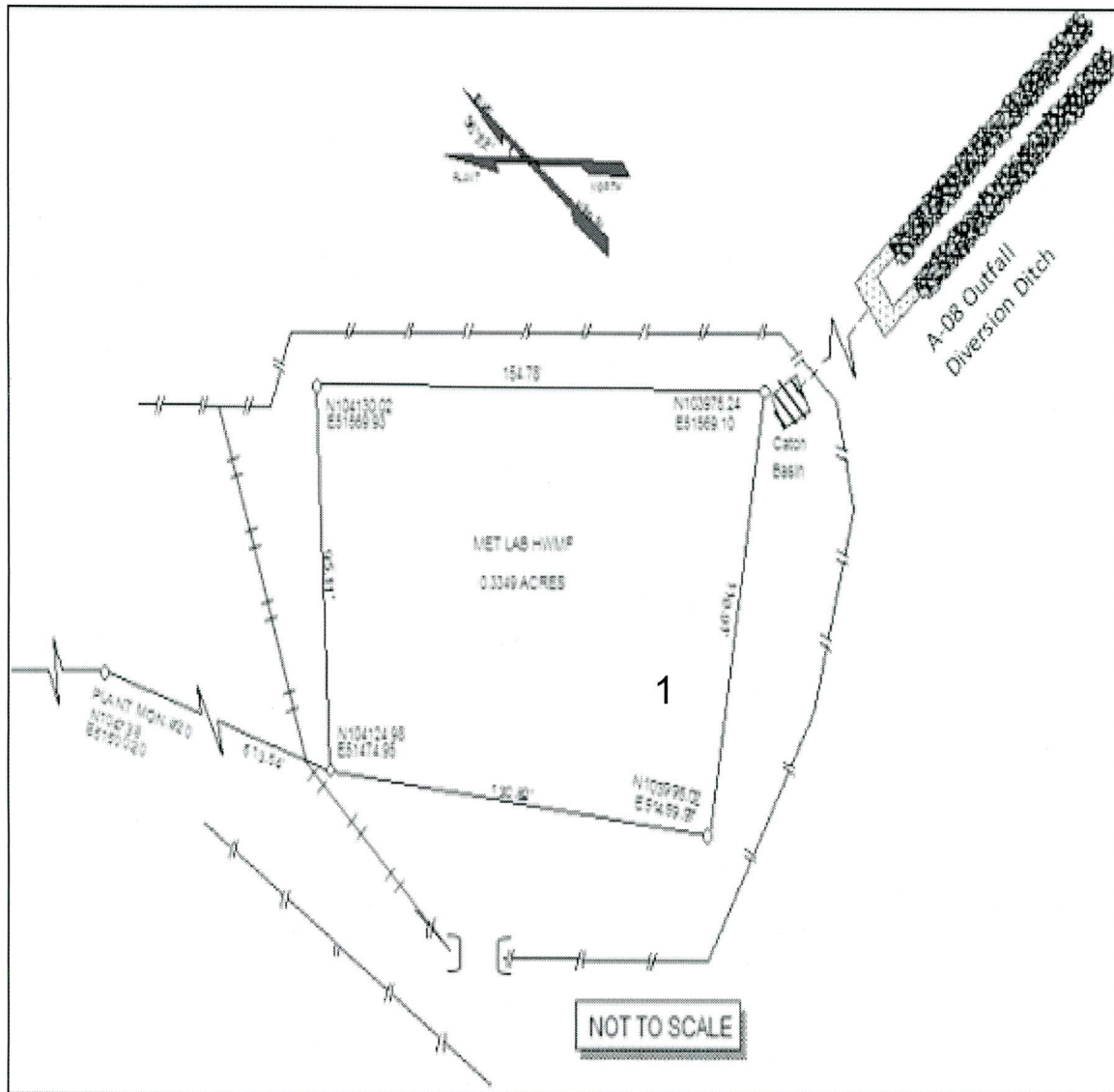
Inspected By		
Charles P. Carter (Print Name)	<i>Charles P. Carter</i> (Signature)	11/14/2022 (Date)

Reviewed By Post-Closure Manager		
Brian Hanshew (Print Name)	<i>BH</i> (Signature)	11-29-2022 (Date)

**Metallurgical Laboratory Hazardous Waste Management  
Facility (HWMF) Post Closure Field Inspection Checklist**

**Manual: C3**  
**Procedure: ER-IDS-019-020**  
**Revision: 6**  
**Page: 4 of 4**

**Map of Metallurgical Laboratory HWMF**



**NOTES:** 1=Grass on side slopes thinning/dying. Rye grass seed was planted on 10/04/2022 which produced a stand of grass with the exception of a couple spots. These couple of spots will have additional seed planted by Post Closure Maintenance

NO FURTHER ENTRIES

CPC 11/14/2022

# POST CLOSURE MAINTENANCE REGISTER

**Index Number**
**Unit Name**

15 METALLURGICAL LABORATORY HAZARDOUS WASTE MANAGEMENT FACILITY - 904-110G

**Watershed** UPPER THREE RUNS

AHA #	AHA-ER-5534
Work Order #	NA
Work Group	POST CLOSURE MAINTENANCE
Priority	Medium
RCRA	YES

<b>Maintenance Number</b>	PC-2022-00128	<b>Maintenance Status</b>	Complete
Inspection Date	11/14/2022	<b>Chemical Type</b>	
Completion Date	11/29/2022	<b>Chemical Name</b>	
		<b>Amount Used</b>	

**Description Of Maintenance Item**

Grass on side slopes thinning/dying. . Rye grass seed was planted on 10/04/2022 which produced a stand of grass with the exception of a couple spots. These couple of spots will have additional seed planted by Post Closure Maintenance

**Maintenance Item Corrected**

Post Closure Maintenance sowed rye grass seed

**Notes** ER-IDS-019-0020

Approved by : Brian Hanshew - ACP Post Closure Manager

Signature



Approval date :

11/29/2022