

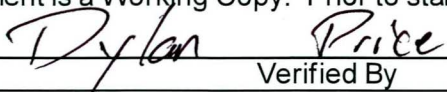
**ENVIRONMENTAL COMPLIANCE & AREA COMPLETION PROJECTS (EC&ACP) STANDARD
OPERATING PROCEDURES, VOL. I**

Manual: C3
 Procedure: ER-IDS-019-055
 Revision: 4
 Effective Date: 10/04/2021
 Type-Class: Checklist
 Page: 1 of 3

**P-AREA EARLY CONSTRUCTION AND OPERATIONAL DISPOSAL SITE (ECODS) P-2 OPERABLE
UNIT FIELD INSPECTION CHECKLIST**

WORKING COPY

This document is a Working Copy. Prior to start of work, verify this is the latest revision per the Procedure Index.



 Verified By Date

08/09/2024

CAUTION

The Inspector will IMMEDIATELY notify the Post-Closure Manager and Environmental Compliance Authority if there has been a breach or compromise of the institutional controls of this waste unit. This notification will be in accordance with Savannah River Site post-closure inspection procedures.

NOTE

1. Manual C3, Volume 1, Procedure ER-SOP-019, Waste Unit and IOU Inspection and Maintenance, is referenced for inspection details.
2. Steps in this checklist may be completed concurrently or in any order.

SCHEDULED UNSCHEDULED

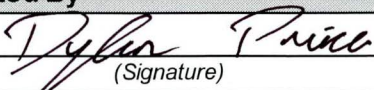
A = Satisfactory X = Unsatisfactory (Explanation required)	A or X	Observation/Corrective Action Taken
1. VERIFY roads are accessible. SRNS-RP-2010-01524, Corrective Measures Implementation Report (CMIR)/Remedial Action Completion Report (RACR), Section 7, Note 1, may be referenced.	A	
2. VERIFY waste unit warning signs (6) are in acceptable condition, have correct information, and are legible from a distance of 25 feet.	A	
3. CHECK survey boundary monuments for damage and visibility.	A	

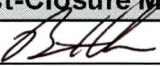
P-Area Early Construction and Operational Disposal Site (ECODS) P-2 Operable Unit Field
 Inspection Checklist

Manual: C3
 Procedure: ER-IDS-019-055
 Revision: 4
 Page: 2 of 3

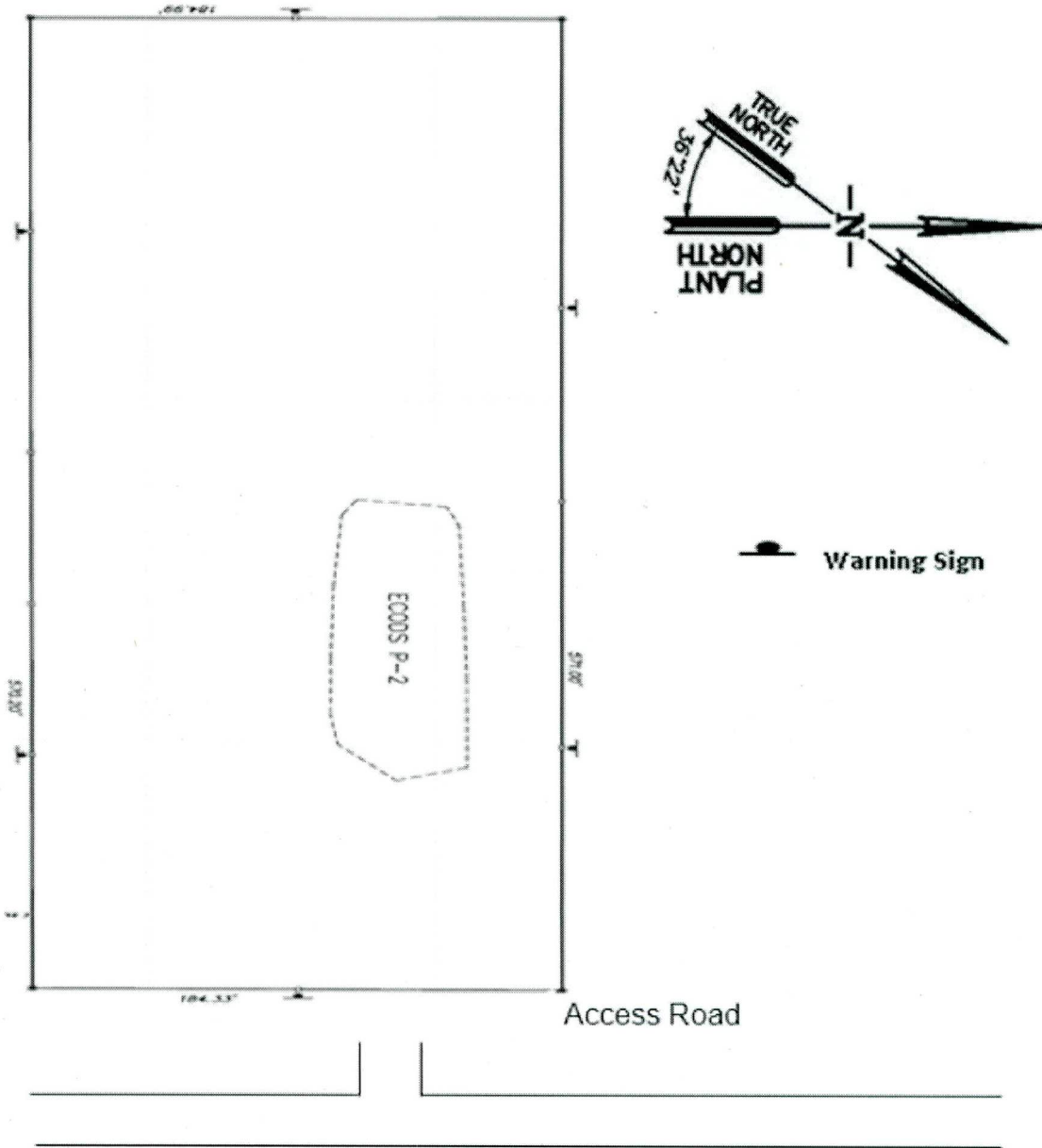
SCHEDULED UNSCHEDULED

A = Satisfactory X = Unsatisfactory (Explanation required)		A or X	Observation/Corrective Action Taken
4.	VERIFY there are no unauthorized excavations, digging, or construction activities within the Early Construction and Operational Disposal Site (ECODS) P-2 boundaries.	A	
5.	VERIFY signs of erosion or depression (e.g., subsidence) are not present. (CMIR/RACR, Section 7, Item 5).	A	
6.	VERIFY signs of burrowing or mounding animals are not present. (CMIR/RACR, Section 7, Item 4).	A	
7.	Other none	A	

Inspected By		
Dylan Price		08/09/2024
(Print Name)	(Signature)	(Date)

Reviewed by Post-Closure Manager		
Brian Hanshew		8/27/24
(Print Name)	(Signature)	(Date)

Map of P-Area ECODS P-2 Operable Unit



NOTES: Inspected per ER-SOP-019, Section 5.1

No Further Entries

DP
8/9/24