

**ENVIRONMENTAL COMPLIANCE & AREA COMPLETION PROJECTS (EC&ACP) STANDARD
OPERATING PROCEDURES, VOL. I**

Manual: C3
 Procedure: ER-IDS-019-035
 Revision: 4
 Effective Date: 12/21/2021
 Type-Class: Checklist
 Page: 1 of 3

**P REACTOR SEEPAGE BASIN OPERABLE UNIT (BLDGS. 904-61G, 904-62G AND 904-63G) FIELD
INSPECTION CHECKLIST**

WORKING COPY

This document is a Working Copy. Prior to start of work, verify this is the latest revision per the Procedure Index.

Dylan Price
 Verified By

08/09/2024
 Date

CAUTION

The Inspector is required to IMMEDIATELY notify the Post-Closure Manager and Environmental Compliance Authority if there has been a breach or compromise of the institutional controls of this waste unit. This notification is required to be in accordance with Savannah River Site post-closure inspection procedures.

NOTE

1. Manual C3, Volume I, Procedure ER-SOP-019, Waste Unit and IOU Inspection and Maintenance, is referenced to for inspection details.
2. Monitoring wells associated with this waste unit are maintained in accordance with Environmental Compliance & Area Completion Projects Monitoring Well Procedures.
3. Steps in this checklist may be completed concurrently or in any order.

SCHEDULED

UNSCHEDULED

A = Satisfactory X = Unsatisfactory (Explanation required)		A or X	Observation/Corrective Action Taken
1.	VERIFY roads are accessible.	A	
2.	VERIFY that the waste unit signs (8) are in acceptable condition, have the correct information, and are legible from a distance of 25 feet.	A	

P Reactor Seepage Basin Operable Unit (Bldgs. 904-61G, 904-62G and 904-63G) Field Inspection Checklist

Manual: C3
 Procedure: ER-IDS-019-035
 Revision: 4
 Page: 2 of 3

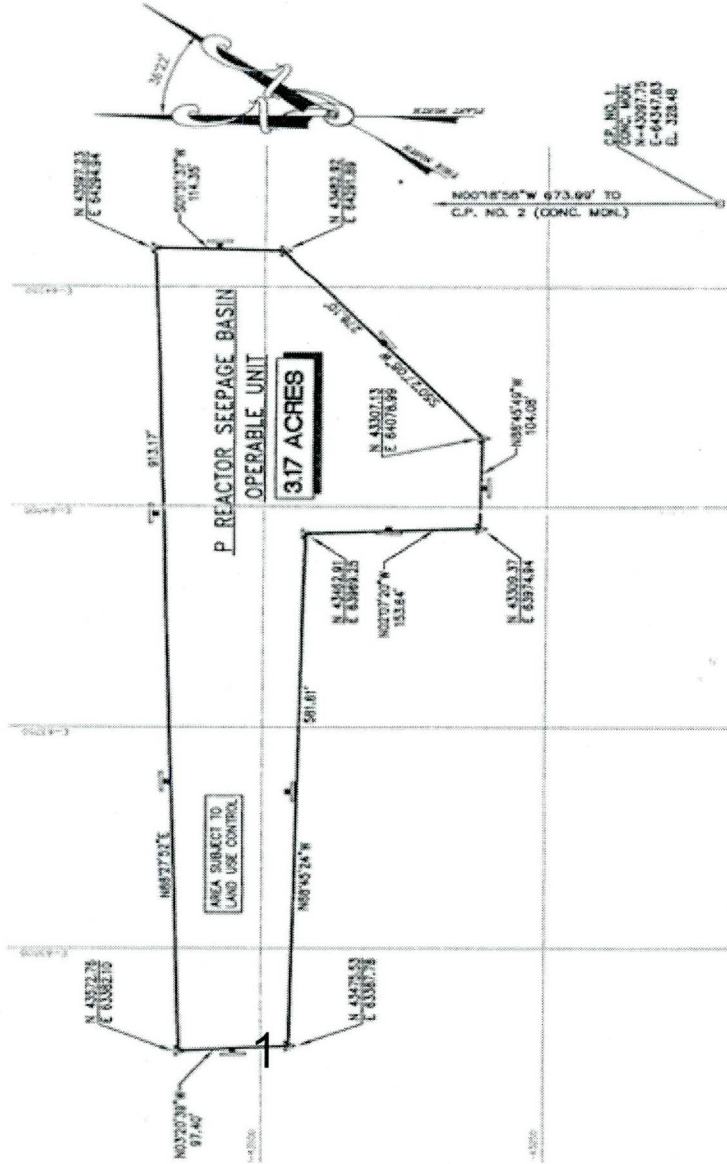
SCHEDULED UNSCHEDULED

A = Satisfactory		A or X	Observation/Corrective Action Taken
X = Unsatisfactory (Explanation required)			
3.	VERIFY there is no unauthorized digging, excavation, or construction activities on the soil cover.	A	
4.	CHECK the integrity of drainage ditches for the presence of excessive erosion, sediment buildup, and any debris restricting water flow.	A	
5.	VERIFY that no woody vegetation is growing on the soil cover, AND REMOVE OR IDENTIFY as needed.	A	
6.	VISUALLY CHECK vegetative cover for grass density with no bare spots more than 3 feet by 3 feet in area. (The height of the vegetation should not impair the visual inspection of the soil cover. This will be determined by the Inspector.)	A	
7.	CHECK the closure cover for signs of erosion or depressions (subsidence).	A	
8.	CHECK for signs of burrowing animals.	A	
9.	VISUALLY PERFORM a condition check of the survey benchmarks for damage and visibility.	A	
10.	Other.	X	Made repairs to barbed wire Ref. PC-2024-00043

Inspected By		
Dylan Price (Print Name)	<i>Dylan Price</i> (Signature)	08/09/2024 (Date)

Reviewed By Post-Closure Manager		
Brian Hanshew (Print Name)	<i>BH</i> (Signature)	8-27-24 (Date)

P REACTOR SEEPAGE BASIN (BLDGS. 904-61G,904-62G AND 904-63G)



NOTES: Inspected per ER-SOP-019, Section 5.1

1: Fixed barbed wire

No Further Entries

*DP
8/27/24*

POST CLOSURE MAINTENANCE REGISTER

Index Number	Unit Name
317	P REACTOR SEEPAGE BASIN OPERABLE UNIT - 904-61G
318	P REACTOR SEEPAGE BASIN OPERABLE UNIT - 904-62G
319	P REACTOR SEEPAGE BASIN OPERABLE UNIT - 904-63G

Watershed STEEL CREEK

AHA # AHA-ER-5534
Work Order # NA
Work Group POST CLOSURE MAINTENANCE
Priority Medium
RCRA NO

Maintenance Number	PC-2024-00043	Maintenance Status	Complete
Inspection Date	8/9/2024	Chemical Type	NA
Completion Date	8/9/2024	Chemical Name	N/A
		Amount Used	N/A

Description Of Maintenance Item

Broken barbed wire found along western fenceline

Maintenance Item Corrected

Post Closure Maintenance repaired the broken barbed wire.

Notes ER-IDS-019-035

Approved by : Brian Hanshew - ACP Post Closure Manager

Signature



Approval date :

8/27/24