

**ENVIRONMENTAL COMPLIANCE & AREA COMPLETION PROJECTS (EC&ACP) STANDARD
OPERATING PROCEDURES, VOL. I**
Manual: C3
Procedure: ER-IDS-019-032
Revision: 6
Effective Date: 4/08/2019
Type-Class: Checklist
Page: 1 of 4
T-AREA OPERABLE UNIT (TAOU) FIELD INSPECTION CHECKLIST
WORKING COPY

This document is a Working Copy. Prior to start of work, verify this is the latest revision per the Procedure Index.

Charles P. Carter
Verified By

09/29/2021
Date

CAUTION

The Inspector shall IMMEDIATELY notify the Post-Closure Manager and Environmental Compliance Authority if there has been a breach or compromise of the institutional controls of this waste unit. This notification shall be in accordance with Savannah River Site post closure inspection procedures.

NOTE

1. Manual C3, Vol. I, ER-SOP-019, Waste Unit Inspection and Maintenance, shall be referred to for inspection details.
2. Monitoring wells associated with this waste unit are maintained in accordance with EC&ACP monitoring well procedures.
3. Steps in this checklist may be completed concurrently or in any order.
4. Inspection activities associated with the engineered cover system over the old TNX Seepage Basin (904-076G), TNX Burial Ground (643-5G), and the cover system for the new TNX Seepage Basin (904-102G) are integrated into the T-Area Operable Unit. The old TNX Seepage Basin (904-076G), TNX Burial Ground (643-5G), and new TNX Seepage Basin (904-102G) were closed as part of the TNX Operable Unit.

 SCHEDULED
 UNSCHEDULED

A = Satisfactory		A or X	Observation/Corrective Action Taken
X = Unsatisfactory (Explanation required)			
1.	Verify roads are accessible.	A	

T-Area Operable Unit (TAOU) Field Inspection Checklist

SCHEDULED

UNSCHEDULED

A = Satisfactory X = Unsatisfactory (Explanation required)		A or X	Observation/Corrective Action Taken
2.	Verify waste unit signs (35) are in acceptable condition, have correct information, and are legible from a distance of 25 feet. Refer to WSRC-RP-2006-4005, Post-Construction Report (PCR) for the T-Area Operable Unit (TAOU) (U), for source document.	A	
3.	Verify there is no unauthorized digging, excavation, or construction activities on soil cover.	A	
4.	Verify integrity of any drainage ditches and required land grading for proper drainage is maintained and they are free of excessive erosion, sediment build-up, and any debris restricting water flow.	X	Outlet side of drainage ditches has vegetation that needs removal See map note: 1 Reference Maintenance Register: PC-2021-00091
5.	Verify no woody vegetation is growing on soil cover. Remove or identify as needed.	A	
6.	Visually check vegetative cover for grass density with no bare spots more than 3 feet by 3 feet in area. The height of vegetation should not impair the visual inspection of soil cover. This will be determined by the Inspector.	A	
7.	Check soil cover for signs of erosion or depressions (subsidence).	A	
8.	Check for signs of burrowing or mounding animals.	A	

T-Area Operable Unit (TAOU) Field Inspection Checklist

Manual: C3
 Procedure: ER-IDS-019-032
 Revision: 6
 Page: 3 of 4

SCHEDULED UNSCHEDULED

A = Satisfactory X = Unsatisfactory (Explanation required)		A or X	Observation/Corrective Action Taken
9.	Visually inspect survey (benchmarks) to ensure they are not damaged.	A	
10.	Other	NO FURTHER ENTRIES	

CPC 09/29/2021

Inspected By

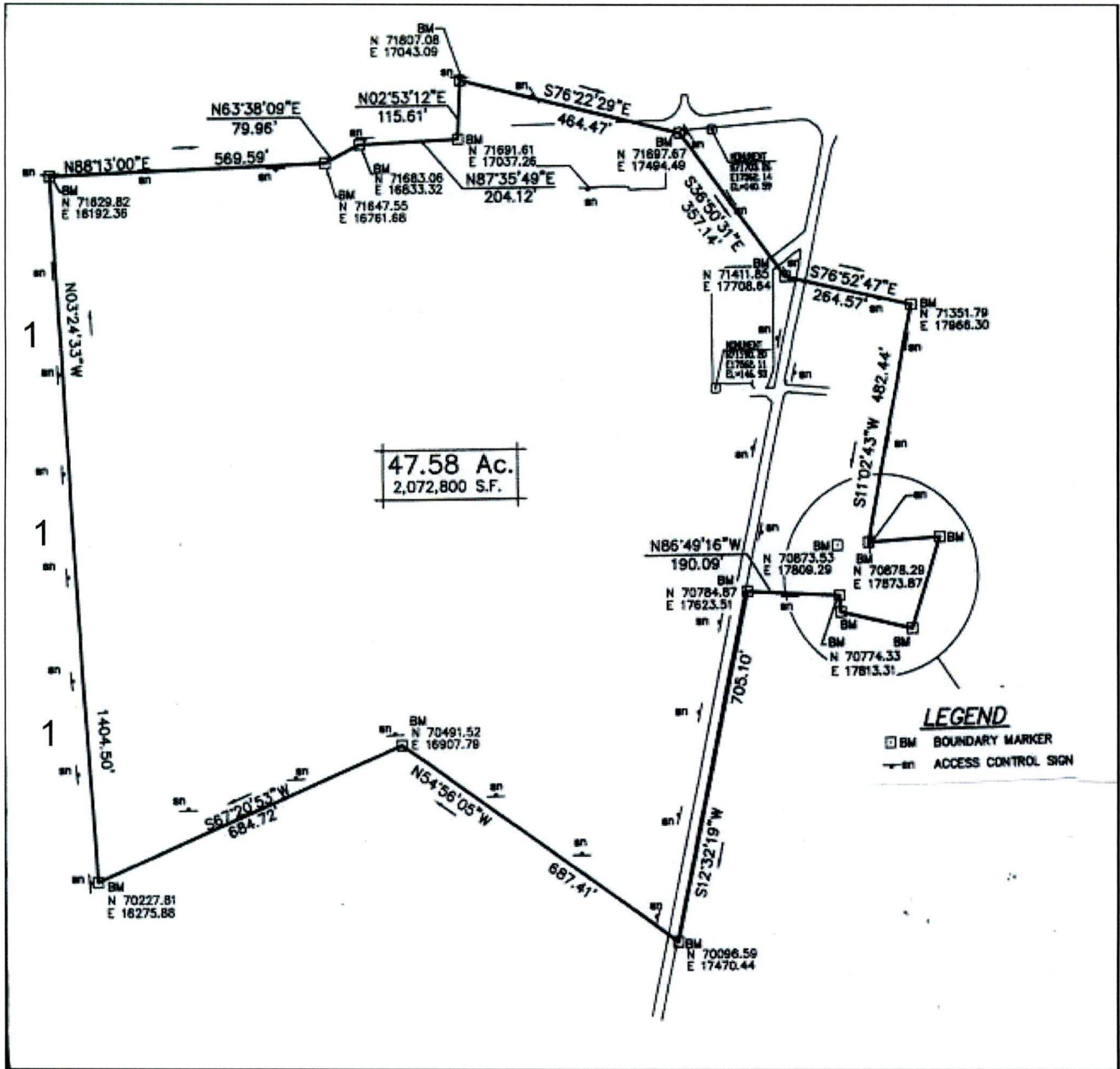
Charles P. Carter	<i>Charles P. Carter</i>	09/29/2021
Print Name	Signature	Date

Review By Post-Closure Manager

George W. Joyner	<i>George W. Joyner</i>	9/30/21
Print Name	Signature	Date

T-Area Operable Unit (TAOU) Field Inspection Checklist

Map of T-Area Operable Unit (TAOU)



NOTES: 1=Outlet side of drainage ditches has vegetation that needs removal. USFS will cut and remove vegetation from outlet side of drianage ditches.

NO FURTHER ENTRIES