

**ENVIRONMENTAL COMPLIANCE & AREA COMPLETION PROJECTS (EC&ACP) STANDARD
OPERATING PROCEDURES, VOL. I**
Manual: C3
Procedure: ER-IDS-019-072
Revision: 3
Effective Date: 11/15/2017
Type-Class: Checklist
Page: 1 of 3
EARLY ACTION D-AREA OPERABLE UNIT (EADAOU) FIELD INSPECTION CHECKLIST
WORKING COPY

This document is a Working Copy. Prior to start of work, verify this is the latest revision per the Procedure Index.

Charles P. Carter

 Verified By

06/08/2021

 Date

CAUTION

The Inspector shall IMMEDIATELY notify the Post-Closure Manager and Environmental Compliance Authority if there has been a breach or compromise of the institutional controls of this waste unit. This notification shall be in accordance with Savannah River Site post closure inspection procedures.

NOTE

1. Manual C3, ER-SOP-019, Waste Unit Inspection and Maintenance, shall be referred to for inspection details.
2. Steps in this checklist may be completed concurrently or in any order.

 SCHEDULED
 UNSCHEDULED

A = Satisfactory X = Unsatisfactory (Explanation required)		A or X	Observation/Corrective Action Taken
1.	Verify roads are accessible.	A	
2.	Verify waste units warning signs (8) are in acceptable condition, have correct information, and are legible from a distance of 25 feet.	X	Vegetation blocking visibility of one waste unit warning sign See Map Note:1 Reference Maintenance Register: PC-2021-00048

Early Action D-Area Operable Unit (EADAOU) Field Inspection Checklist

Manual: C3
 Procedure: ER-IDS-019-072
 Revision: 3
 Page: 2 of 3

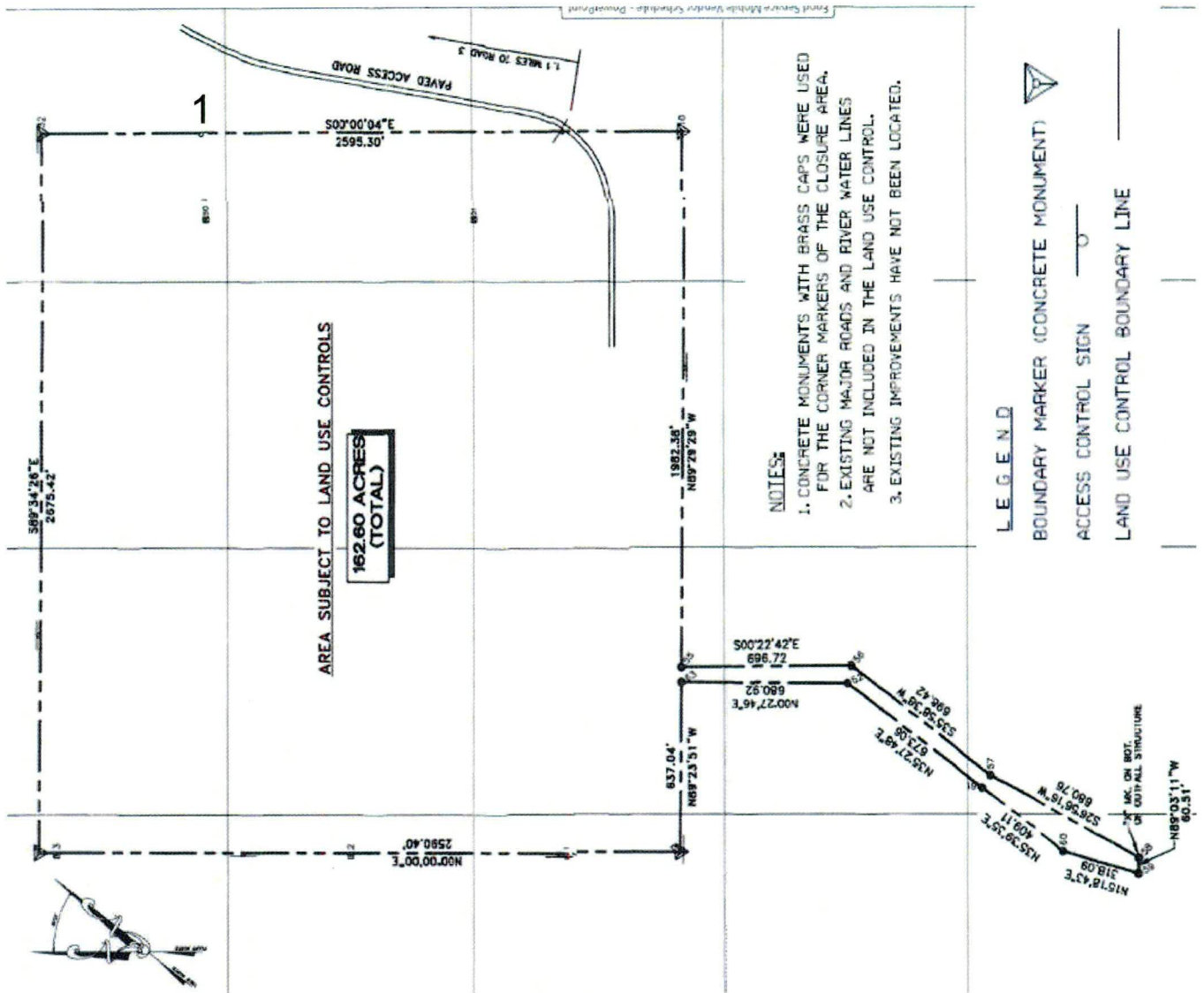
SCHEDULED UNSCHEDULED

A = Satisfactory		A or X	Observation/Corrective Action Taken
X = Unsatisfactory (Explanation required)			
3.	Verify there are no unauthorized excavation, digging, or construction activities within land use control boundaries.	A	
4.	Other		
NO FURTHER ENTRIES			
			CPC-06/08/2021

Inspected By		
Charles P. Carter	<i>Charles P. Carter</i>	06/08/2021
Print Name	Signature	Date

Reviewed By Post Closure Manager		
George W. Joyner	<i>George W. Joyner</i>	6/8/21
Print Name	Signature	Date

Map of Early Action D-Area Operable Unit (EADAOU)



NOTES: 1=Vegetation blocking visibility of one waste unit warning sign. Post Closure Maintenance removed vegetation blocking the visibility of the waste unit warning sign.

NO FURTHER ENTRIES

