

108490

**ENVIRONMENTAL COMPLIANCE & AREA COMPLETION PROJECTS (EC&ACP) STANDARD
OPERATING PROCEDURES, VOL. I**
Manual: C3
Procedure: ER-IDS-019-029
Revision: 4
Effective Date: 06/02/2016
Type-Class: Form
Page: 1 of 3
**A-AREA MISCELLANEOUS RUBBLE PILE OPERABLE UNIT (731-6A) FIELD INSPECTION
CHECKLIST**
WORKING COPY

This document is a Working Copy. Prior to start of work, verify this is the latest revision per the Procedure Index.



Verified By

1-22-18

Date

CAUTION

The Inspector shall IMMEDIATELY notify the Post-Closure Manager and Environmental Compliance Authority if there has been a breach or compromise of the institutional controls of this waste unit. This notification shall be in accordance with Savannah River Site post-closure inspection procedures.

NOTE

1. Manual C3, ER-SOP-019, *Waste Unit Inspection and Maintenance*, shall be referred to for inspection details.
2. Monitoring wells associated with this waste unit are maintained in accordance with EC&ACP Monitoring Well Procedures.
3. Steps in this checklist may be completed concurrently or in any order.


SCHEDULED

UNSCHEDULED

A = Satisfactory		A or X	Observation/Corrective Action Taken
X = Unsatisfactory (Explanation required)			
1.	Verify roads to waste unit are accessible.	A	
2.	Verify that the waste unit signs (12) are in acceptable condition, have the correct information* and are legible from a distance of 25 feet.	A	

Manual: C3
 Procedure: ER-IDS-019-029
 Revision: 4
 Page: 2 of 3

A-Area Miscellaneous Rubble Pile Operable Unit (731-6A) Field Inspection Checklist

SCHEDULED

UNSCHEDULED

A = Satisfactory X = Unsatisfactory (Explanation required)		A or X	Observation/Corrective Action Taken
3.	Check site for general housekeeping. Remove debris as necessary.	A	
4.	Verify there is no unauthorized digging, excavation or construction activities on the soil cover.	A	
5.	Verify that no woody vegetation is growing on the soil cover. Remove or identify as needed.	A	
6.	Visually check vegetative cover for grass density with no bare spots more than 3 feet by 3 feet in area. The height of the vegetation should not impair the visual inspection of the soil cover. This will be determined by the Inspector.	A	
7.	Check the soil cover for signs of erosion or depressions (subsidence).	A	
8.	Check for signs of burrowing animals.	X	ACTIVE ANT MOUNDS ON SOIL COVER. SEE MAP NOTE ①. REF. MAINT. Register DC-2014-00006
9.	Other <u>NO FURTHER ENTRIES</u>		CPL. 1-22-18

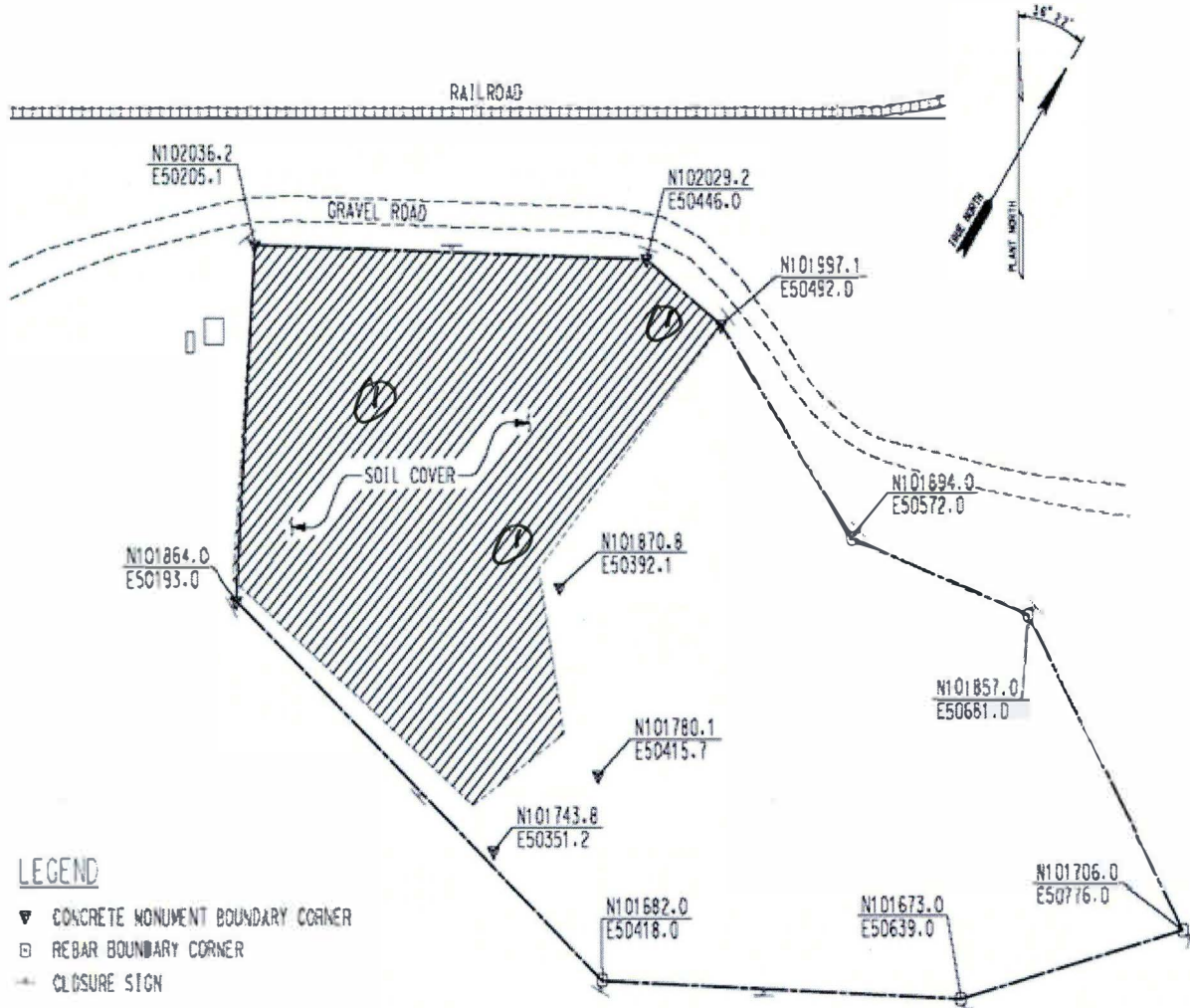
Inspected By		
CHARLES P. CARTER (Print Name)	<i>Charles P. Carter</i> (Signature)	1-22-18 (Date)

Review By Post-Closure Manager		
George W. Toyner (Print Name)	<i>George W. Toyner</i> (Signature)	2/5/18 (Date)

**A-Area Miscellaneous Rubble Pile Operable Unit (731-6A)
Field Inspection Checklist**

Manual: C3
 Procedure: ER-IDS-019-029
 Revision: 4
 Page: 3 of 3

MAP A-AREA MISCELLANEOUS RUBBLE PILE OPERABLE UNIT (731-6A)



NOTES: ① = ACTIVE ANT MOUNDS ON SOIL COVER. APPLIED 1.0 lbs OF EXTINGUISH ANT BAIT.

NO FURTHER ENTRIES

C.P.C. 1-22-18

POST CLOSURE MAINTENANCE REGISTER

Index Number
Unit Name

48 A-AREA MISCELLANEOUS RUBBLE PILE - 731-6A

Watershed UPPER THREE RUNS

AHA # NA
 Work Order # N/A
 Work Group POST CLOSURE MAINTENANCE
 Priority Medium
 RCRA NO

Maintenance Number	PC-2018-00006	Maintenance Status	Complete
Inspection Date	1/22/2018	Chemical Type	Pesticide
Completion Date	1/22/2018	Chemical Name	Extinguish
		Amount Used	1.0 Pounds

Description Of Maintenance Item

Active ant mounds on waste unit

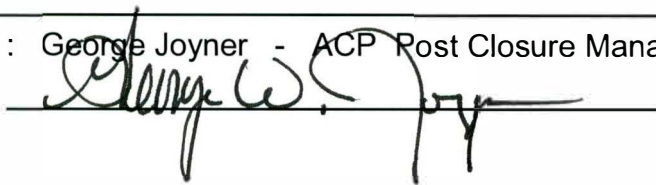
Maintenance Item Corrected

Applied Extinguish pesticide

Notes New observation.

Approved by : George Joyner - ACP Post Closure Manager

Signature



Approval date :

2/5/18