

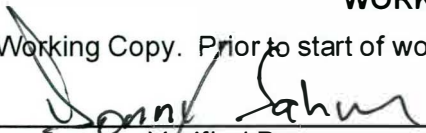
**ENVIRONMENTAL COMPLIANCE & AREA COMPLETION PROJECTS (EC&ACP) STANDARD
OPERATING PROCEDURES, VOL. I**

Manual: C3
 Procedure: ER-IDS-019-052
 Revision: 3
 Effective Date: 09/02/2021
 Type-Class: Checklist
 Page: 1 of 3

**R-AREA EARLY CONSTRUCTION AND OPERATIONAL DISPOSAL SITES (ECODS) 1A, 1B, AND 1C
OPERABLE UNIT FIELD INSPECTION CHECKLIST**

WORKING COPY

This document is a Working Copy. Prior to start of work, verify this is the latest revision per the Procedure Index.



 Verified By Date

CAUTION

The Inspector will IMMEDIATELY notify the Post-Closure Manager and Environmental Compliance Authority if there has been a breach or compromise of the institutional controls of this waste unit. This notification will be made in accordance with Savannah River Site post-closure inspection procedures.

NOTE

1. Manual C3, Volume 1, Procedure ER-SOP-019, Waste Unit and IOU Inspection and Maintenance, will be used as a reference for inspection details.
2. Steps in this checklist may be completed concurrently or in any order.

SCHEDULED UNSCHEDULED

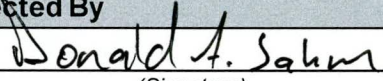
A = Satisfactory X = Unsatisfactory (Explanation required)		A or X	Observation/Corrective Action Taken
1.	VERIFY roads are accessible. REFER TO SRNS-RP-2010-01524, Corrective Measures Implementation Report CMIR)/Remedial Action Completion Report (RACR), Section 7, Note 1.	A	
2.	VERIFY waste unit warning signs (9) are in acceptable condition, have correct information, and are legible from a distance of 25 feet.	A	

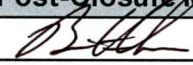
R-Area Early Construction and Operational Disposal Sites (ECODS) 1A, 1B, and 1C Operable Unit
Field Inspection Checklist

Manual: C3
 Procedure: ER-IDS-019-052
 Revision: 3
 Page: 2 of 3

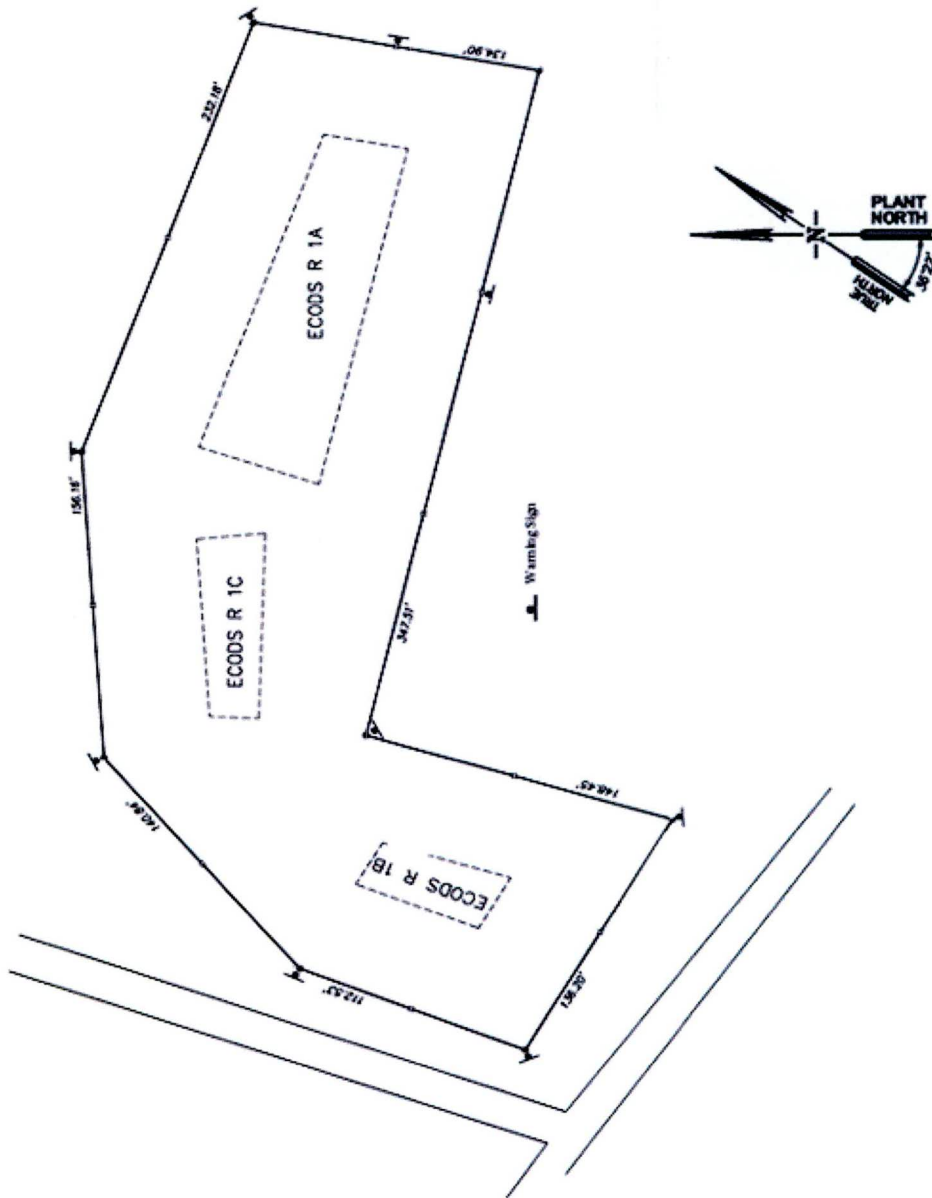
SCHEDULED UNSCHEDULED

A = Satisfactory		A or X	Observation/Corrective Action Taken
X = Unsatisfactory (Explanation required)			
3.	CHECK survey boundary monuments for damage and visibility.	A	
4.	VERIFY there are no unauthorized excavations, digging, or construction activities within the Early Construction and Operational Disposal Site 1A, 1B, and 1C boundaries.	A	
5.	VERIFY signs of erosion or depression (subsidence) is not present. (SRNS-RP-2010-01524, CMIR/RACR, Section 7, Item 5).	A	
6.	VERIFY signs of burrowing or mounding animals are not present. (SRNS-RP-2010-01524, CMIR/RACR, Section 7, Item 4).	A	
7.	Other NONE	A	

Inspected By		
Donald A. Sahm <i>(Print Name)</i>	 <i>(Signature)</i>	08/09/2024 <i>(Date)</i>

Reviewed by Post-Closure Manager		
Brian Hanshew <i>(Print Name)</i>	 <i>(Signature)</i>	8-27-24 <i>(Date)</i>

Map of R-Area ECODS 1A, 1B, 1C Operable Unit



NOTES: Referenced Procedure:ER-SOP-019, 5.1 to perform an
unscheduled inspection.

no further entries

DAS 8/27/24