

**ENVIRONMENTAL COMPLIANCE & AREA COMPLETION PROJECTS (EC&ACP) STANDARD OPERATING PROCEDURES, VOL. I**

Manual: C3  
 Procedure: ER-IDS-019-074  
 Revision: 1  
 Effective Date: 03/20/2017  
 Type-Class: Form  
 Page: 1 of 3

**C-AREA REACTOR OPERABLE UNIT FIELD INSPECTION CHECKLIST**

**WORKING COPY**

This document is a Working Copy. Prior to start of work, verify this is the latest revision per the Procedure Index.

*Charles P. Carr* *4-27-14*  
 Verified By Date

**CAUTION**

The Inspector shall IMMEDIATELY notify the Post-Closure Manager and Environmental Compliance Authority if there has been a breach or compromise of the institutional controls of this waste unit. This notification shall be in accordance with Savannah River Site post-closure inspection procedures.

**NOTE**

1. Manual C3, Vol. 1, ER-SOP-019, Waste Unit Inspection and Maintenance, shall be referred to for inspection details.
2. Monitoring wells associated with this waste unit are maintained in accordance with EC&ACP monitoring well procedures.
3. Steps in this checklist may be completed concurrently or in any order.

**SCHEDULED**                       **UNSCHEDULED**

A = Satisfactory X = Unsatisfactory (Explanation required)	A or X	Observation/Corrective Action Taken
1. Verify roads are accessible.	A	
2. Verify land-use control boundary signs (43) are in acceptable condition, have the correct information, and are legible from a distance of 25 feet.	X	VEGETATION NEEDS CUTTING AROUND LAND-USE CONTROL SIGNS AND Boundaries. SEE MAP NOTED. REG. MAINT. Register PC-2018-00043

C-Area Reactor Operable Unit Field Inspection Checklist

Manual: C3  
 Procedure: ER-IDS-019-074  
 Revision: 1  
 Page: 2 of 3

SCHEDULED

UNSCHEDULED

A = Satisfactory X = Unsatisfactory (Explanation required)	A or X	Observation/Corrective Action Taken
3. Verify there are no unauthorized excavation, digging, or construction activities within the land-use control boundaries.	A	
4. Other		<p style="text-align: center;"><del>NO FURTHER ENTRIES</del></p> <p style="text-align: right;">CPC 4-27-18</p>

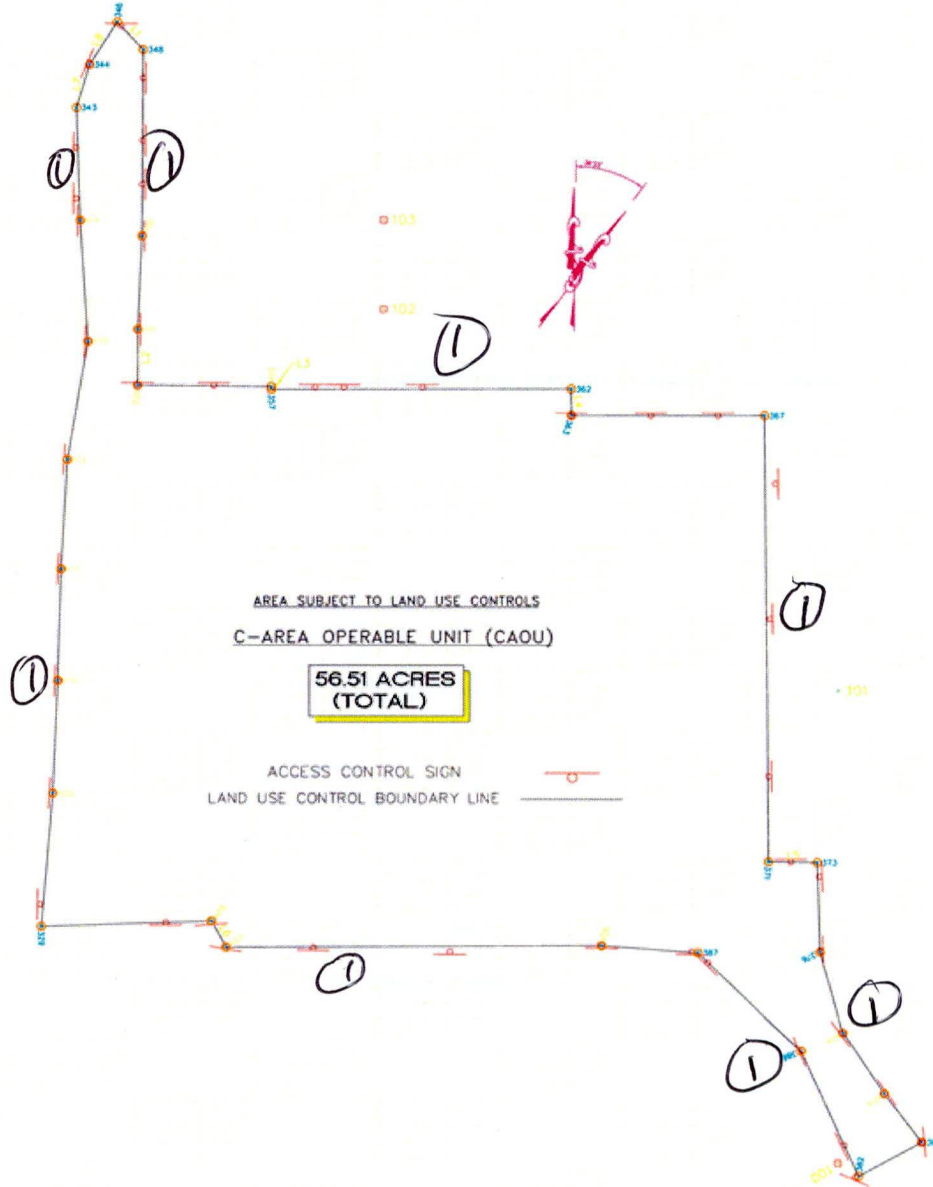
Inspected By		
<i>Charles P. Carter</i> <small>(Print Name)</small>	<i>Charles P. Carter</i> <small>(Signature)</small>	<i>4-27-18</i> <small>(Date)</small>

Reviewed By Post-Closure Manager		
<i>George W. Soyner</i> <small>(Print Name)</small>	<i>George W. Soyner</i> <small>(Signature)</small>	<i>5/29/18</i> <small>(Date)</small>

C-Area Reactor Operable Unit Field Inspection Checklist

Manual: C3  
Procedure: ER-IDS-019-074  
Revision: 1  
Page: 3 of 3

C-Area Reactor



NOTES: ① VEGETATION NEEDS CUTTING AROUND LAND-USE CONTROL SIGNS + BOUNDARIES. USFS WILL CUT AROUND LAND USE CONTROL SIGNS + BOUNDARIES.

~~NO FURTHER ENTRIES~~

CPL 4-27-18

# POST CLOSURE MAINTENANCE REGISTER

**Index Number**
**Unit Name**

240 C-AREA REACTOR OPERABLE UNIT

242

475

555 577, 1178, 1201, 2232, 2233 AND 2256

**Watershed** FOURMILE BRANCH

AHA # NA  
 Work Order # NA  
 Work Group USFS  
 Priority Medium  
 RCRA NO

**Maintenance Number** PC-2018-00043      **Maintenance Status** Complete  
**Inspection Date** 4/27/2018      **Chemical Type**  
**Completion Date** 1/17/2019      **Chemical Name**  
    **Amount Used**

**Description Of Maintenance Item**

Vegetation needs cutting around land-use control signs and boundaries

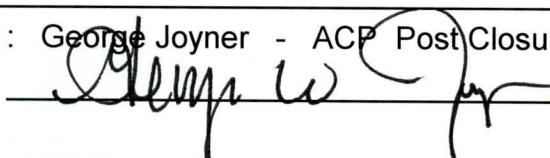
**Maintenance Item Corrected**

USFS cut vegetation around land-use control signs and boundaries.

**Notes** New observation.

Approved by : George Joyner - ACP Post Closure Manager

Signature



Approval date :

2/19/19