

**ENVIRONMENTAL COMPLIANCE & AREA COMPLETION PROJECTS (EC&ACP) STANDARD  
OPERATING PROCEDURES, VOL. I**
**Manual: C3**  
**Procedure: ER-IDS-019-052**  
**Revision: 3**  
**Effective Date: 09/02/2021**  
**Type-Class: Checklist**  
**Page: 1 of 3**
**R-AREA EARLY CONSTRUCTION AND OPERATIONAL DISPOSAL SITES (ECODS) 1A, 1B, AND 1C  
OPERABLE UNIT FIELD INSPECTION CHECKLIST**
**WORKING COPY**

This document is a Working Copy. Prior to start of work, verify this is the latest revision per the Procedure Index.

Bronson Heise  
Verified By

12/18/24  
Date

**CAUTION**

The Inspector will IMMEDIATELY notify the Post-Closure Manager and Environmental Compliance Authority if there has been a breach or compromise of the institutional controls of this waste unit. This notification will be made in accordance with Savannah River Site post-closure inspection procedures.

**NOTE**

1. Manual C3, Volume 1, Procedure ER-SOP-019, Waste Unit and IOU Inspection and Maintenance, will be used as a reference for inspection details.
2. Steps in this checklist may be completed concurrently or in any order.

 SCHEDULED

 UNSCHEDULED

A = Satisfactory		A or X	Observation/Corrective Action Taken
X = Unsatisfactory (Explanation required)			
1.	VERIFY roads are accessible. REFER TO SRNS-RP-2010-01524, Corrective Measures Implementation Report (CMIR)/Remedial Action Completion Report (RACR), Section 7, Note 1.	A	
2.	VERIFY waste unit warning signs (9) are in acceptable condition, have correct information, and are legible from a distance of 25 feet.	A	

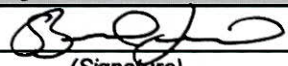
**R-Area Early Construction and Operational Disposal Sites (ECODS) 1A, 1B, and 1C Operable Unit  
Field Inspection Checklist**

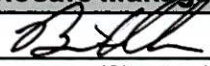
Manual: C3  
 Procedure: ER-IDS-019-052  
 Revision: 3  
 Page: 2 of 3

SCHEDULED

UNSCHEDULED

A = Satisfactory		A or X	Observation/Corrective Action Taken
X = Unsatisfactory (Explanation required)			
3.	CHECK survey boundary monuments for damage and visibility.	A	
4.	VERIFY there are no unauthorized excavations, digging, or construction activities within the Early Construction and Operational Disposal Site 1A, 1B, and 1C boundaries.	A	
5.	VERIFY signs of erosion or depression (subsidence) is not present. (SRNS-RP-2010-01524, CMIR/RACR, Section 7, Item 5).	A	
6.	VERIFY signs of burrowing or mounding animals are not present. (SRNS-RP-2010-01524, CMIR/RACR, Section 7, Item 4).	A	
7.	Other	A	none.

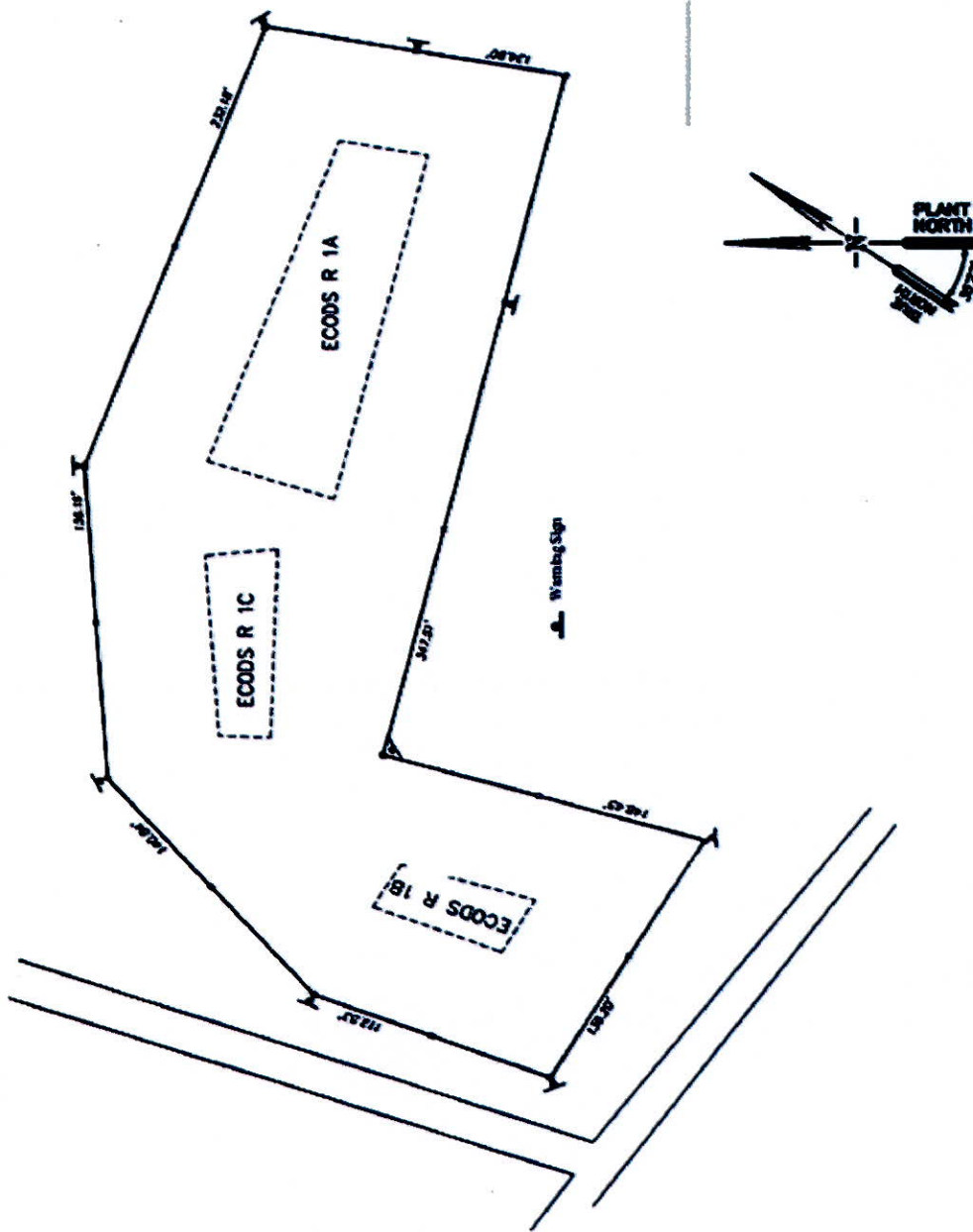
Inspected By		
Bronson Heise (Print Name)	 (Signature)	12/18/24 (Date)

Reviewed by Post-Closure Manager		
Brian Hanshaw (Print Name)	 (Signature)	12/30/2024 (Date)

R-Area Early Construction and Operational Disposal Sites  
(ECODS) 1A, 1B, and 1C Operable Unit Field Inspection  
Checklist

Manual: C3  
Procedure: ER-IDS-019-052  
Revision: 3  
Page: 3 of 3

Map of R-Area ECODS 1A, 1B, 1C Operable Unit



NOTES: None.

---

---

---

---

---