

108535

ENVIRONMENTAL COMPLIANCE & AREA COMPLETION PROJECTS (EC&ACP) STANDARD OPERATING PROCEDURES, VOL. I

Manual: C3
 Procedure: ER-IDS-019-077
 Revision: 0
 Effective Date: 07/19/2017
 Type-Class: Form
 Page: 1 of 3

D-AREA ASH BASIN (488-2D) AND ASH LANDFILL (488-4D) INTERIM FIELD INSPECTION CHECKLIST

WORKING COPY

This document is a Working Copy. Prior to start of work, verify this is the latest revision per the Procedure Index.

Richard Fraga
 Verified By

2/27/18
 Date

CAUTION

The Inspector shall IMMEDIATELY notify the Post-Closure Manager and Environmental Compliance Authority if there has been a breach or compromise of the institutional controls of this waste unit. This notification shall be in accordance with Savannah River Site post closure inspection procedures.

NOTE

1. Manual C3, Vol. I, ER-SOP-019, Waste Unit Inspection and Maintenance, shall be referred to for inspection details.
2. Steps in this checklist may be completed concurrently or in any order.
3. Interim Inspection Frequency Requirements are defined in the SRNS-RP-2014-00459, Removal Action Design Plan for the 488-4D Ash Landfill and 488-2D Ash Basin, Section 3.8, Quality Assurance.

SCHEDULED

UNSCHEDULED

A = Satisfactory	X = Unsatisfactory (Explanation required)	A or X	Observation/Corrective Action Taken
1.	Verify roads are accessible.	A	
2.	Verify there are no excavations, digging, or construction activities (excluding irrigation) on the D-Area Basin (488-2D) and Ash Landfill (488-4D) cover system.	A	
3.	Verify the integrity of drainage systems and required land grading for proper drainage is maintained and they are free of excessive erosion, sediment buildup, and any debris restricting water flow.	A	

Manual: C3
 Procedure: ER-IDS-019-077
 Revision: 0
 Page: 2 of 3

D-Area Ash Basin (488-2D) and Ash Landfill (488-4D) Interim Field Inspection Checklist

SCHEDULED UNSCHEDULED

A = Satisfactory		A or X	Observation/Corrective Action Taken
X = Unsatisfactory (Explanation required)			
4.	Verify no woody vegetation is growing on the D-Area Ash Basin (488-2D) and Ash Landfill (488-4D) cover system.	X	(CARRY OVER ITEM) Small Woody Plants Growing on Soil Cover. See Map Note (1) Ref. Maint Register No. PL-2017-00093
5.	Verify grass density of the vegetation cover has no bare spots more than 3 feet by 3 feet in area. The height of the vegetative cover should not impair the visual inspection of the soil cover. This verification will be determined by the inspector.	A	
6.	Verify the soil cover at D-Area Ash Basin (488-2D) and Ash Landfill (488-4D) has no signs of unacceptable erosion or depressions (subsidence).	X	(CARRY OVER ITEM) Spots of Erosion on the side slope of 488-4D. See Map Note (2). Ref. Maint Register No. PL-2017-00094
7.	Verify signs of burrowing animals on the D-Area Ash Basin (488-2D) and Ash Landfill (488-4D) are not present.	X	Active Ant Mounds on soil cover. See Map Note (3) Ref. Maint. Register No. PL-2018-00018
8.	Other		No Further Entries RF 2/27/18

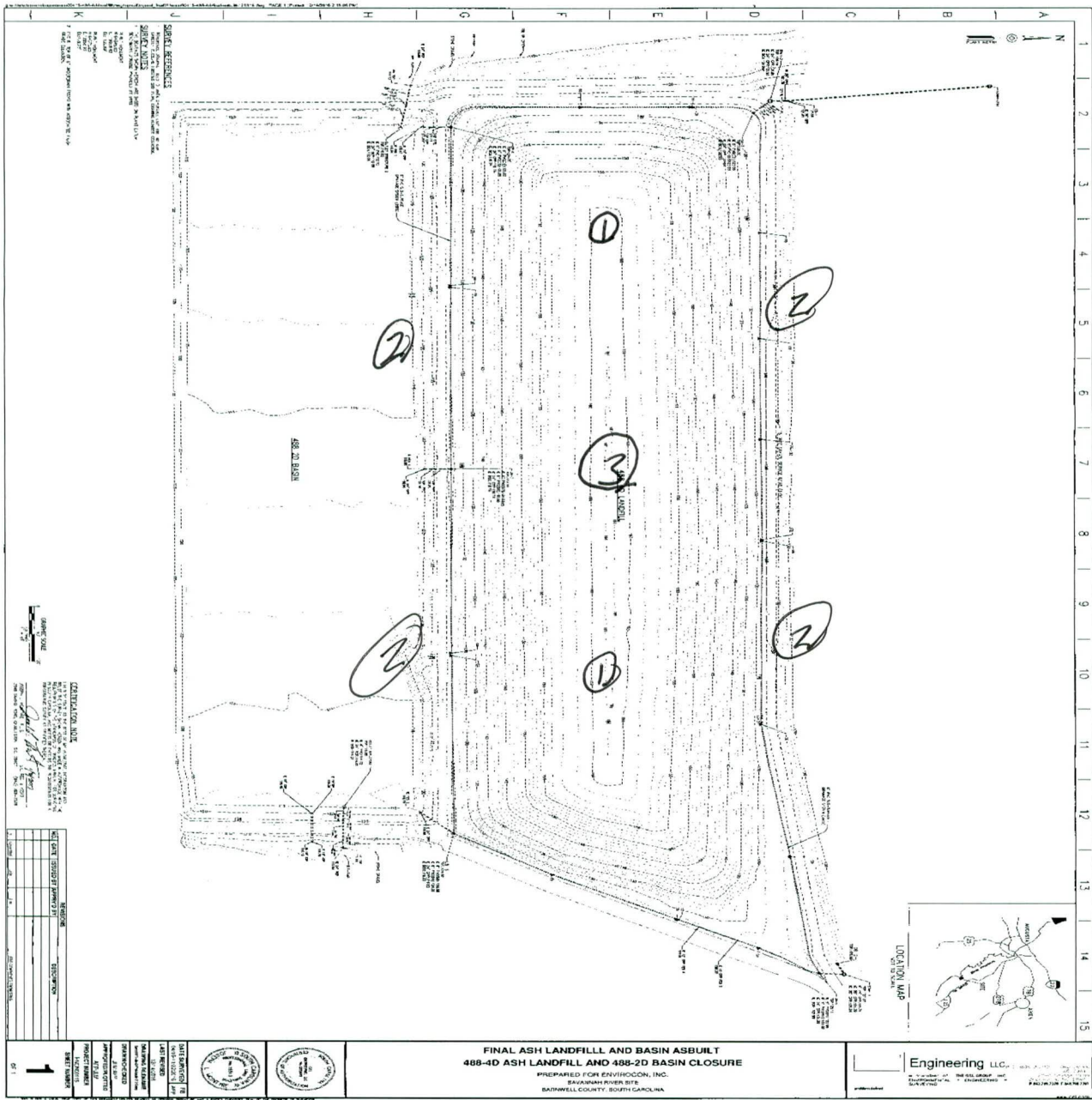
Inspected By		
Richard Feagin Print Name	<i>Richard Feagin</i> Signature	2/27/18 Date

Reviewed By Post Closure Manager		
George W. Taylor Print Name	<i>George W. Taylor</i> Signature	3/5/18 Date

D-Area Ash Basin (488-2D) and Ash Landfill (488-4D) Interim Field Inspection Checklist

Manual: C3
Procedure: ER-IDS-019-077
Revision: 0
Page: 3 of 3

D-Area Ash Basin (488-2D) and Ash Landfill (488-4D) Map



NOTES: ① = CARRY over item, small woody plants on soil cover. USFS to mow cap. ② CARRY over item. Spots of Erosion on side slopes of 488-4D. USFS to complete repairs. ③ = Active Ant Mounds on soil cover. Applied 4.0 lbs of Extinguish Ant Bait.

POST CLOSURE MAINTENANCE REGISTER

Index Number	Unit Name
272	D-AREA ASH BASIN (488-2D)
548	D-AREA ASH LANDFILL (488-4D)

Watershed UPPER THREE RUNS

AHA #	NA
Work Order #	N/A
Work Group	POST CLOSURE MAINTENANCE
Priority	Medium
RCRA	NO

Maintenance Number	PC-2018-00018	Maintenance Status	Complete
Inspection Date	2/27/2018	Chemical Type	NA
Completion Date	2/27/2018	Chemical Name	Extinguish
		Amount Used	4.0 Pounds

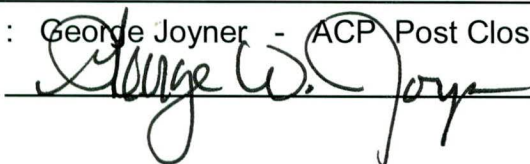
Description Of Maintenance Item
Active ant mounds on soil cover

Maintenance Item Corrected
Applied Extinguish pesticide

Notes New observation

Approved by : George Joyner - ACP Post Closure Manager

Signature



Approval date :

3/5/18