

**ENVIRONMENTAL COMPLIANCE & AREA COMPLETION PROJECTS (EC&ACP) STANDARD
OPERATING PROCEDURES, VOL. I**
Manual: C3
Procedure: ER-IDS-019-036
Revision: 4
Effective Date: 09/14/2021
Type-Class: Checklist
Page: 1 of 3

**R-AREA BURNING RUBBLE PITS AND RUBBLE PILE OPERABLE PIT REMEDIATION FIELD
INSPECTION CHECKLIST**
WORKING COPY

This document is a Working Copy. Prior to start of work, verify this is the latest revision per the Procedure Index.



Verified By

10-21-2021

Date

CAUTION

The Inspector will IMMEDIATELY notify the Post-Closure Manager and Environmental Compliance Authority if there has been a breach or compromise of the institutional controls of this waste unit. This notification will be made in accordance with Savannah River Site post-closure inspection procedures.

NOTE

1. Manual C3, Volume 1, Procedure ER-SOP-019, Waste Unit and IOU Inspection and Maintenance, is required to be used as a reference for inspection details.
2. Monitoring wells associated with this waste unit are maintained in accordance with Environmental Compliance and Area Completion Projects monitoring well procedures.
3. Steps in this checklist may be completed concurrently or in any order.

 SCHEDULED
 UNSCHEDULED

A = Satisfactory X = Unsatisfactory (Explanation required)		A or X	Observation/Corrective Action Taken
1.	VERIFY roads are accessible.	A	
2.	VERIFY waste unit signs (4) are in acceptable condition, have correct information, and are legible from a distance of 25 feet.	A	
3.	VERIFY there is no unauthorized digging, excavation, or construction activities on soil cover.	A	

R-Area Burning Rubble Pits and Rubble Pile Operable Pit Remediation Field Inspection Checklist

Manual: C3
 Procedure: ER-IDS-019-036
 Revision: 4
 Page: 2 of 3

SCHEDULED UNSCHEDULED

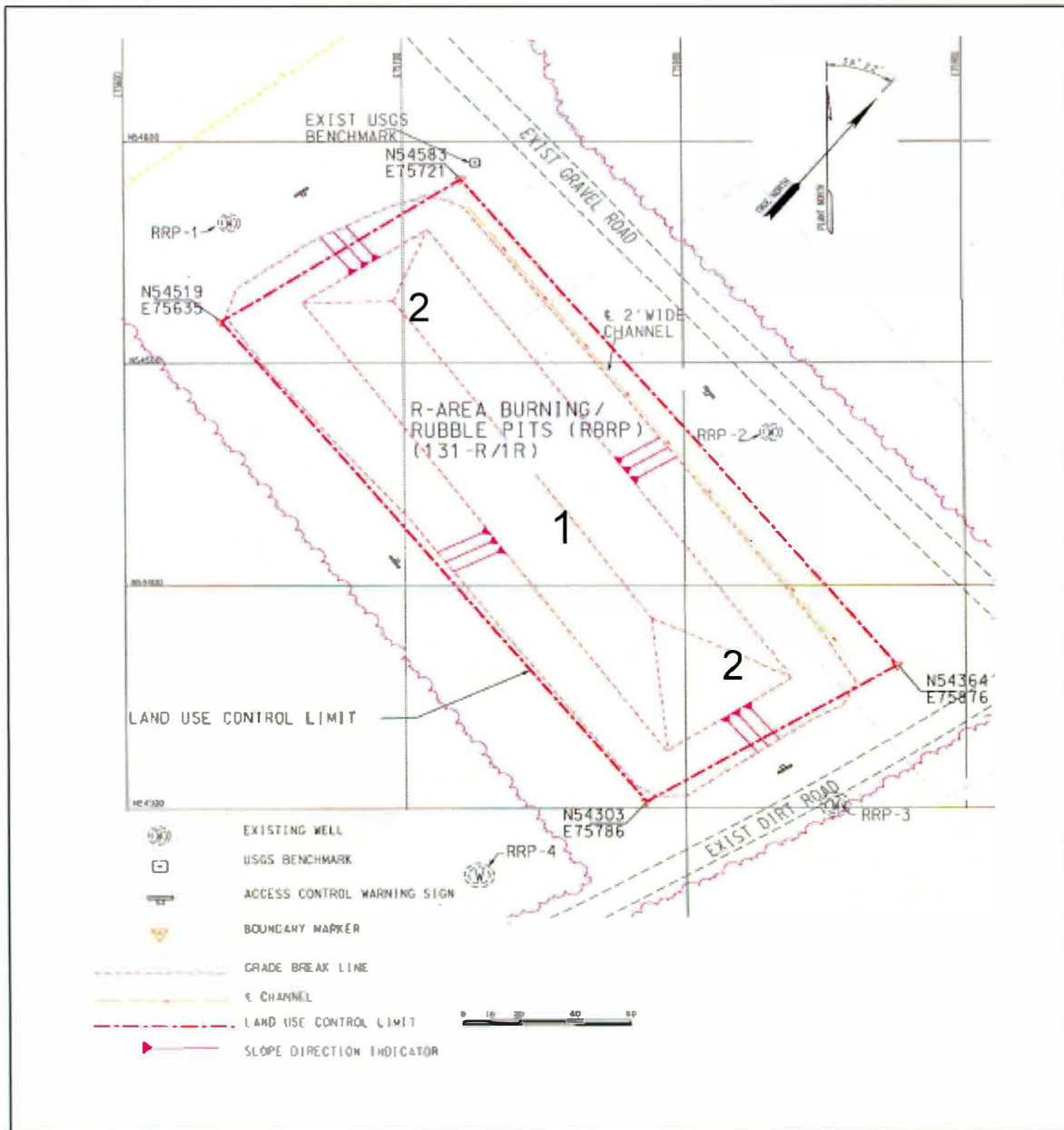
A = Satisfactory X = Unsatisfactory (Explanation required)		A or X	Observation/Corrective Action Taken
4.	CHECK integrity of drainage ditches for presence of excessive erosion, sediment buildup, and any debris restricting water flow.	A	
5.	VERIFY no woody vegetation is growing on soil cover, AND REMOVE OR IDENTIFY as needed.	A	
6.	VISUALLY CHECK vegetative cover for grass density with no bare spots more than 3 feet by 3 feet in area. (The height of vegetation should not impair visual inspection of soil cover. This will be determined by the Inspector.)	X	Vegetative cover (grass) is thinning in some areas. See Map Note: 1 Reference Maintenance Register: PC-2021-00102
7.	CHECK closure cover for signs of erosion or depressions (subsidence).	A	
8.	CHECK for signs of burrowing animals.	A	
9.	VISUALLY PERFORM a condition check of survey benchmarks for damage and visibility.	A	Active Ant Mounds on soil cover. See Map Note: 2 Reference Maintenance Register: PC-2021-00103
10.	Other	NO FURTHER ENTRIES	

CPC 10/21/2021

Inspected by		
Charles P. Carter <i>(Print Name)</i>	<i>Charles P. Carter</i> <i>(Signature)</i>	10/21/2021 <i>(Date)</i>

Reviewed by Post-Closure Manager		
George W. Joyner <i>(Print Name)</i>	<i>George W. Joyner</i> <i>(Signature)</i>	10/28/21 <i>(Date)</i>

R-Area Burning Rubble Pits and Rubble Pile Operable Pit Remediation



NOTES: 1=Vegetative cover (grass) is thinning in some areas. USFS will repair with grass seed or sod.

2=Active Ant Mounds on soil cover. Applied 2.0 of Extinguish ant bait.

~~NO FURTHER ENTRIES~~

POST CLOSURE MAINTENANCE REGISTER

Index Number	Unit Name
116	R-AREA BURNING/RUBBLE PIT - 131-R
117	R-AREA BURNING/RUBBLE PILE - 131-1R

Watershed LOWER THREE RUNS

AHA # AHA-ER-5534
Work Order # N/A
Work Group POST CLOSURE MAINTENANCE
Priority Medium
RCRA NO

Maintenance Number	PC-2021-00103	Maintenance Status	Complete
Inspection Date	10/21/2021	Chemical Type	Pesticide
Completion Date	10/21/2021	Chemical Name	Extinguish
		Amount Used	2.0 Pounds

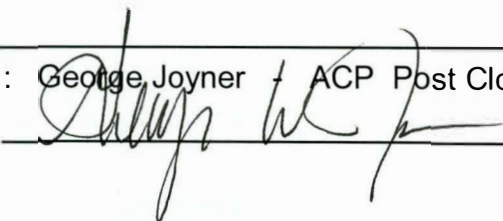
Description Of Maintenance Item
Active ant mounds on waste unit

Maintenance Item Corrected
Applied Extinguish pesticide

Notes New observation.

Approved by : George Joyner ACP Post Closure Manager

Signature



Approval date :

10/28/21