

ENVIRONMENTAL COMPLIANCE & AREA COMPLETION PROJECTS (EC&ACP) STANDARD
OPERATING PROCEDURES, VOL. I

Manual: C3
Procedure: ER-IDS-019-036
Revision: 3
Effective Date: 06/01/2016
Type-Class: Form
Page: 1 of 3

R-AREA BURNING RUBBLE PITS AND RUBBLE PILE OPERABLE PIT REMEDIATION FIELD
INSPECTION CHECKLIST

WORKING COPY

This document is a Working Copy. Prior to start of work, verify this is the latest revision per the Procedure Index.



Verified By

10-13-17

Date

CAUTION

The Inspector shall IMMEDIATELY notify the Post-Closure Manager and Environmental Compliance Authority if there has been a breach or compromise of the institutional controls of this waste unit. This notification shall be in accordance with Savannah River Site post-closure inspection procedures.

NOTE

1. Manual C3, ER-SOP-019, *Waste Unit Inspection and Maintenance*, shall be referred to for inspection details.
2. Monitoring wells associated with this waste unit are maintained in accordance with EC&ACP monitoring well procedures.
3. Steps in this checklist may be completed concurrently or in any order.

SCHEDULED

UNSCHEDULED

A = Satisfactory		A or X	Observation/Corrective Action Taken
X = Unsatisfactory (Explanation required)			
1.	Verify roads are accessible.	A	
2.	Verify waste unit signs (4) are in acceptable condition, have correct information, and are legible from a distance of 25 feet.	A	

R-Area Burning Rubble Pits and Rubble Pile Operable Pit Remediation Field Inspection Checklist

Manual: C3
 Procedure: ER-IDS-019-036
 Revision: 3
 Page: 2 of 3

 SCHEDULED

 UNSCHEDULED

	A = Satisfactory X = Unsatisfactory (Explanation required)	A or X	Observation/Corrective Action Taken
3.	Verify there is no unauthorized digging, excavation, or construction activities on soil cover.	A	
4.	Check integrity of drainage ditches for presence of excessive erosion, sediment buildup, and any debris restricting water flow.	A	
5.	Verify no woody vegetation is growing on soil cover. Remove or identify as needed.	A	
6.	Visually check vegetative cover for grass density with no bare spots more than 3 feet by 3 feet in area. The height of vegetation should not impair visual inspection of soil cover. This will be determined by the Inspector.	A	
7.	Check closure cover for signs of erosion or depressions (subsidence).	A	ACTIVE ANT MOUNDS ON SOIL COVER. SEE MAP NOTE ①. REF. MAINT. Register-PL-20170088
8.	Check for signs of burrowing animals.	X	
9.	Visually perform a condition check of survey benchmarks for damage and visibility.	A	
10.	Other <i>NO FURTHER ENTRIES</i>		<i>[Signature]</i> 10-13-17

Inspected By

Richard Feagin
 (Print Name)

Richard Feagin
 (Signature)

10-13-17
 (Date)

Review By Post-Closure Manager

George W. Joyner
 (Print Name)

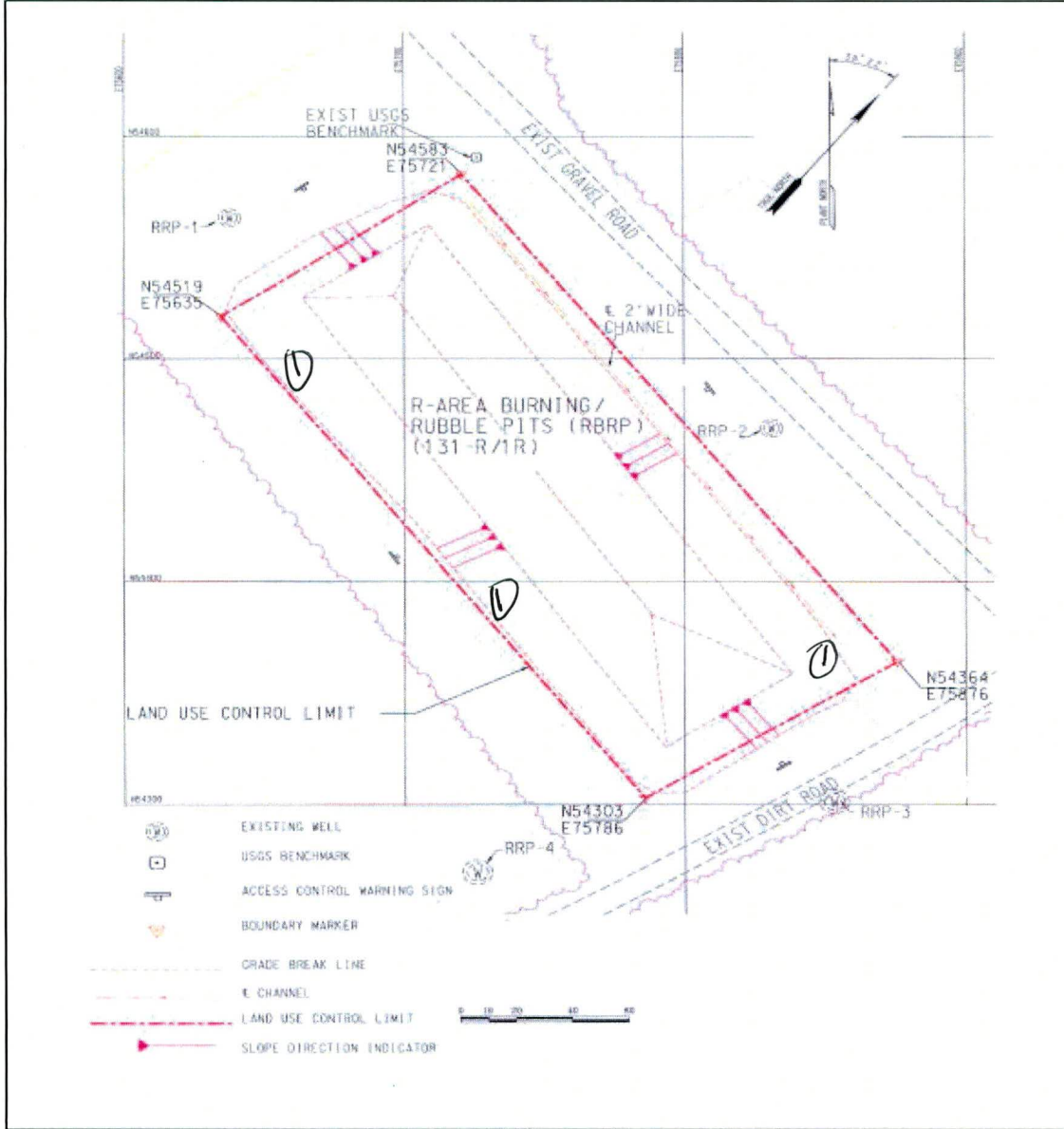
George W. Joyner
 (Signature)

11/29/17
 (Date)

R-Area Burning Rubble Pits and Rubble Pile Operable Pit Remediation Field Inspection Checklist

Manual: C3
Procedure: ER-IDS-019-036
Revision: 3
Page: 3 of 3

R-Area Burning Rubble Pits and Rubble Pile Operable Pit Remediation



NOTES: ① = ACTIVE ANT MOUNDS ON SOIL COVER. Applied 1.0 lb of Extinguish ANT BAET.

~~NO FURTHER ENTRIES~~

[Signature] 10-13-17

POST CLOSURE MAINTENANCE REGISTER

Index Number	Unit Name
116	R-AREA BURNING/RUBBLE PIT - 131-R
117	R-AREA BURNING/RUBBLE PILE - 131-1R

Watershed LOWER THREE RUNS

AHA #	NA
Work Order #	N/A
Work Group	POST CLOSURE MAINTENANCE
Priority	Medium
RCRA	NO

Maintenance Number	PC-2017-00088	Maintenance Status	Complete
Inspection Date	10/13/2017	Chemical Type	Pesticide
Completion Date	10/13/2017	Chemical Name	Extinguish
		Amount Used	1.0 Pounds

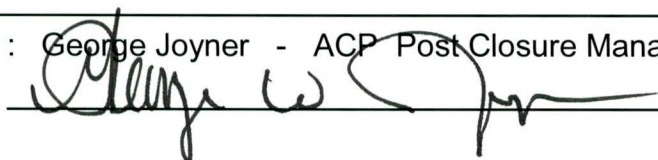
Description Of Maintenance Item
Active ant mounds on waste unit

Maintenance Item Corrected
Applied Extinguish pesticide

Notes New observation.

Approved by : George Joyner - ACP Post Closure Manager

Signature



Approval date : 11/29/17