

108491

**ENVIRONMENTAL COMPLIANCE & AREA COMPLETION PROJECTS (EC&ACP) STANDARD
OPERATING PROCEDURES, VOL. I**
Manual: C3
Procedure: ER-IDS-019-042
Revision: 3
Effective Date: 06/01/2016
Type-Class: Form
Page: 1 of 3
H-AREA RETENTION BASIN FIELD INSPECTION CHECKLIST
WORKING COPY

This document is a Working Copy. Prior to start of work, verify this is the latest revision per the Procedure Index.

Charles P. Carter
Verified By

1-30-18
Date

CAUTION

The Inspector shall IMMEDIATELY notify the Post-Closure Manager and Environmental Compliance Authority if there has been a breach or compromise of the institutional controls of this waste unit. This notification shall be in accordance with Savannah River Site post-closure inspection procedures.

NOTE

1. Manual C3, ER-SOP-019, *Waste Unit Inspection and Maintenance*, shall be referred to for inspection details.
2. Monitoring wells associated with this waste unit are maintained in accordance with EC&ACP monitoring well procedures.
3. Steps in this checklist may be completed concurrently or in any order.


SCHEDULED

UNSCHEDULED

A = Satisfactory X = Unsatisfactory (Explanation required)		A or X	Observation/Corrective Action Taken
1.	Verify roads are accessible.	A	
2.	Verify waste unit signs (9) are in acceptable condition, have correct information, and are legible from a distance of 25 feet.	A	

H-Area Retention Basin Field Inspection Checklist

Manual: C3
 Procedure: ER-IDS-019-042
 Revision: 3
 Page: 2 of 3

 SCHEDULED

 UNSCHEDULED

A = Satisfactory	A or X	Observation/Corrective Action Taken
X = Unsatisfactory (Explanation required)		
3. Verify there are no excavation, digging, or construction activities on soil cover.	A	
4. Check integrity of drainage ditches for presence of excessive erosion, sediment buildup, and any debris restricting water flow.	A	
5. Verify no woody vegetating is growing on soil cover. Remove or identify as needed.	A	
6. Visually check vegetative cover for grass density with no bare spots more than 3-feet by 3-feet in area. The height of vegetative cover should not impair visual inspection of soil cover. This will be determined by the Inspector.	A	
7. Verify monuments have not been damaged.	A	
8. Check soil cover for signs of erosion or depressions (subsidence).	A	
9. Check for signs of burrowing animals.	X	ACTIVE ANT MOUNDS ON SOIL COVER. SEE MAP NOTED RE: MAINT Register PL-2018-00007
10. Other <u>NO FURTHER ENTRIES</u>		CPL 1-30-18

Inspected By

CHARLES P. CARTER
 (Print Name)

Charles P. Carter
 (Signature)

1-30-18
 (Date)

Review By Post-Closure Manager

George W. Joyner
 (Print Name)

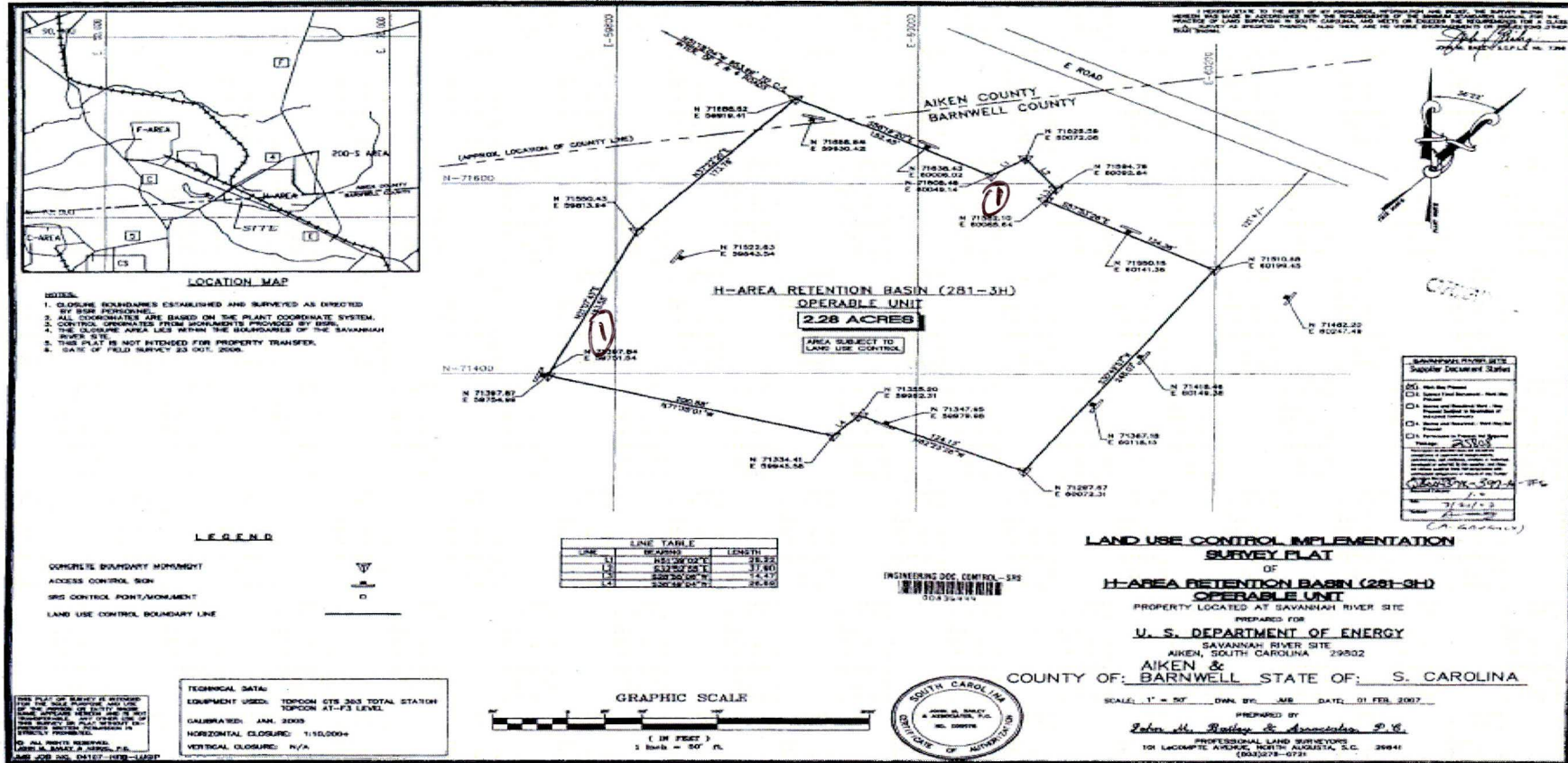
George W. Joyner
 (Signature)

2/15/18
 (Date)

H-Area Retention Basin Field Inspection Checklist

Manual: C3
 Procedure: ER-IDS-019-042
 Revision: 3
 Page: 3 of 3

H-Area Retention Basin (281-3H) Operable Unit



NOTES: (D) = ACTIVE ANT MOUNDS ON SOIL COVER. APPLIED .25 LBS OF EXTINGUISH ANT BAIT.

NO FURTHER ENTRIES

C.P.L. 1-30-18

