

**ENVIRONMENTAL COMPLIANCE & AREA COMPLETION PROJECTS (EC&ACP) STANDARD
OPERATING PROCEDURES, VOL. I**
Manual: C3
Procedure: ER-IDS-019-013
Revision: 5
Effective Date: 06/02/2016
Type-Class: Form
Page: 1 of 3
**C-REACTOR SEEPAGE BASIN (BLDGS. 904-66G, 904-67G AND 904-68G) FIELD INSPECTION
CHECKLIST**
WORKING COPY

This document is a Working Copy. Prior to start of work, verify this is the latest revision per the Procedure Index.



Verified By

04/15/2019

Date

CAUTION

The Inspector shall IMMEDIATELY notify the Post-Closure Manager and Environmental Compliance Authority if there has been a breach or compromise of the institutional controls of this waste unit. This notification shall be in accordance with Savannah River Site post-closure inspection procedures.

NOTE

1. Manual C3, ER-SOP-019, *Waste Unit Inspection and Maintenance*, shall be referred to for inspection details.
2. Monitoring wells associated with this waste unit are maintained in accordance with EC&ACP Monitoring Well Procedures.
3. Steps in this checklist may be completed concurrently or in any order.

 SCHEDULED
 UNSCHEDULED

A = Satisfactory X = Unsatisfactory (Explanation required)		A or X	Observation/Corrective Action Taken
1.	Verify roads to waste unit are accessible.	A	
2.	Verify that the waste unit signs (5) and the subsurface process piping signs (6) are in acceptable condition have correct information and are legible from a distance of 25 feet.	X	Waste unit sign on the South end needs vegetation cut and removed from in front of sign. See map note:1 Ref. maint. register PC-2019-00034

C-Reactor Seepage Basin (Bldgs. 904-66G, 904-67G And 904-68G) Field Inspection Checklist

Manual: C3
 Procedure: ER-IDS-019-013
 Revision: 5
 Page: 2 of 3

SCHEDULED UNSCHEDULED

A = Satisfactory X = Unsatisfactory (Explanation required)		A or X	Observation/Corrective Action Taken
3.	Verify the fence is in good condition and the gate is locked.	A	
4.	Verify that there is no excavating, digging or construction activity on the soil cover or over the subsurface process piping (identified by signs).	A	
5.	Verify that no woody vegetation is growing on the soil cover. Remove or identify as needed.	A	
6.	Visually check vegetative cover for grass density with no bare spots more than 3 feet by 3 feet in area. The height of the vegetation should not impair the visual inspection of the soil cover. This will be determined by the Inspector.	A	
7.	Check the soil cover for signs of erosion or depressions (subsidence).	A	
8.	Check for signs of burrowing animals.	X	Hog damage (rooting) on the Northwest end of the cap. See map note: 2. Ref. maint register: PC-2019-00035
9.	Other Fire Ants	X	Active fire ant mounds on soil cover. See map note: 3. Ref. maint register: PC-2019-00036

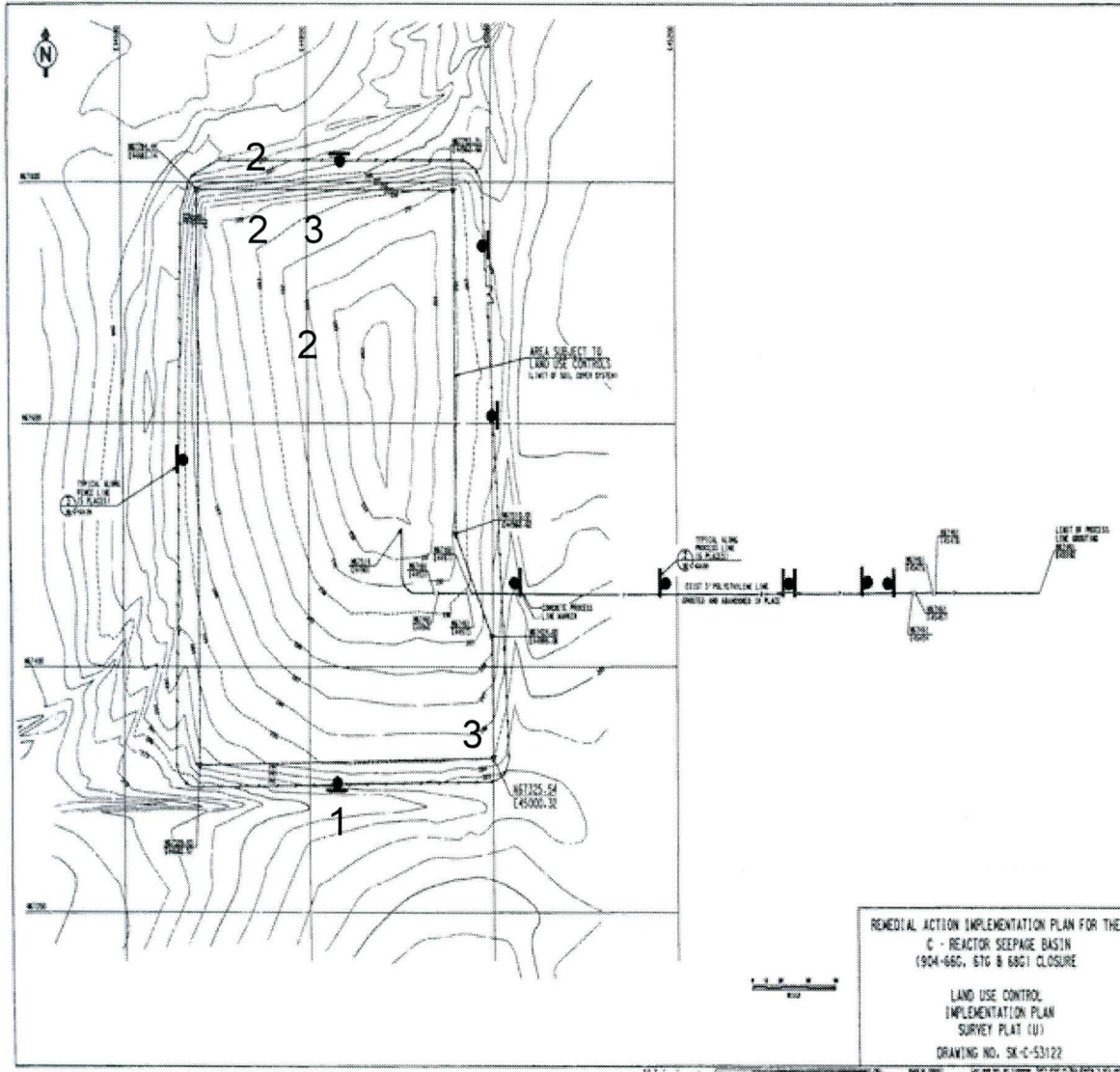
Inspected By

Charles P Carter <i>(Print Name)</i>	<i>Charles P. Carter</i> <i>(Signature)</i>	04/15/2019 <i>(Date)</i>
---	--	-----------------------------

Review By Post-Closure Manager

George W. Joyner <i>(Print Name)</i>	<i>George W. Joyner</i> <i>(Signature)</i>	4/25/19 <i>(Date)</i>
---	---	--------------------------

MAP C-REACTOR SEEPAGE BASIN (Bldgs. 904-66G, 904-67G & 904-68G)



NOTES: 1=Waste unit sign on the South end needs vegetation cut and removed from in front of sign. The USFS will cut and remove vegetation from in front of the waste unit sign. 2=Hog damage (rooting) on the Northwest end of the cap. The USFS will repair the hog damage with topsoil, grass seed and straw. 3= Active fire ant mounds on soil cover. Applied 0.5 lbs. of extinguish fire ant bait.

POST CLOSURE MAINTENANCE REGISTER

Index Number	Unit Name
53	C -AREA REACTOR SEEPAGE BASIN - 904 - 066G
54	C -AREA REACTOR SEEPAGE BASIN - 904 - 067G
55	C -AREA REACTOR SEEPAGE BASIN - 904 - 068G

Watershed FOURMILE BRANCH

AHA # AHA-ER-5534
Work Order # NA
Work Group POST CLOSURE MAINTENANCE
Priority Medium
RCRA NO

Maintenance Number	PC-2019-00036	Maintenance Status	Complete
Inspection Date	4/15/2019	Chemical Type	Pesticide
Completion Date	4/15/2019	Chemical Name	Extinguish
		Amount Used	0.5 Pounds

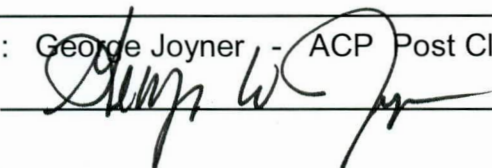
Description Of Maintenance Item
Active ant mounds on waste unit

Maintenance Item Corrected
Applied Extinguish pesticide

Notes New observation.

Approved by : George Joyner - ACP Post Closure Manager

Signature



Approval date :

4/25/19

POST CLOSURE MAINTENANCE REGISTER

Index Number	Unit Name
53	C -AREA REACTOR SEEPAGE BASIN - 904 - 066G
54	C -AREA REACTOR SEEPAGE BASIN - 904 - 067G
55	C -AREA REACTOR SEEPAGE BASIN - 904 - 068G

Watershed FOURMILE BRANCH

AHA # NA
Work Order # N/A
Work Group USFS
Priority Medium
RCRA NO

Maintenance Number PC-2019-00034 **Maintenance Status** Complete
Inspection Date 4/15/2019 **Chemical Type** NA
Completion Date 5/17/2019 **Chemical Name**
Amount Used

Description Of Maintenance Item

Waste unit sign on the South end needs vegetation cut and removed from in front of sign.

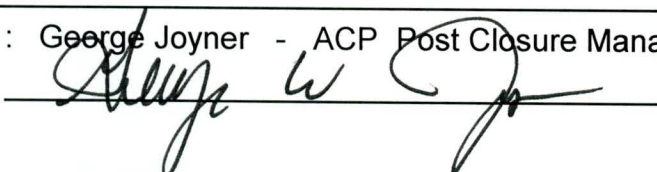
Maintenance Item Corrected

USFS cut and removed vegetation from in front of the South waste unit sign.

Notes New observation

Approved by : George Joyner - ACP Post Closure Manager

Signature



Approval date :

5/20/19

POST CLOSURE MAINTENANCE REGISTER

Index Number	Unit Name
53	C -AREA REACTOR SEEPAGE BASIN - 904 - 066G
54	C -AREA REACTOR SEEPAGE BASIN - 904 - 067G
55	C -AREA REACTOR SEEPAGE BASIN - 904 - 068G

Watershed FOURMILE BRANCH

AHA # NA
Work Order # N/A
Work Group USFS
Priority Medium
RCRA NO

Maintenance Number PC-2019-00035 **Maintenance Status** Complete
Inspection Date 4/15/2019 **Chemical Type** NA
Completion Date 5/17/2019 **Chemical Name**
Amount Used

Description Of Maintenance Item

Hog damage (rooting) on the Northwest end of the cap.

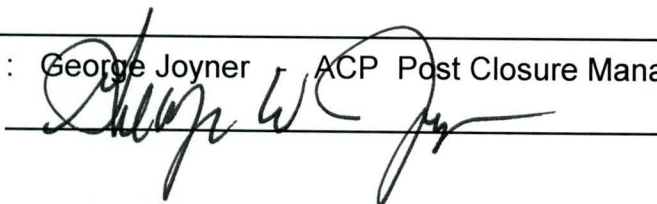
Maintenance Item Corrected

USFS repaired hog damage with top soil, grass seed and straw.

Notes New observation

Approved by : George Joyner ACP Post Closure Manager

Signature



Approval date :

5/20/19