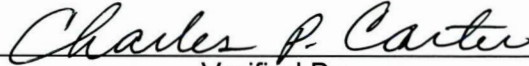


**ENVIRONMENTAL COMPLIANCE & AREA COMPLETION PROJECTS (EC&ACP) STANDARD
OPERATING PROCEDURES, VOL. I**
Manual: C3
Procedure: ER-IDS-019-041
Revision: 3
Effective Date: 06/02/2016
Type-Class: Form
Page: 1 of 3
D-AREA ASH BASIN (DAB) (488-D) FIELD INSPECTION CHECKLIST
WORKING COPY

This document is a Working Copy. Prior to start of work, verify this is the latest revision per the Procedure Index.



Verified By

12/18/2020

Date

CAUTION

The Inspector shall IMMEDIATELY notify the Post-Closure Manager and Environmental Compliance Authority if there has been a breach or compromise of the institutional controls of this waste unit. This notification shall be in accordance with Savannah River Site post-closure inspection procedures.

NOTE

1. Manual C3, ER-SOP-019, *Waste Unit Inspection and Maintenance*, shall be referred to for inspection details.
2. Steps in this checklist may be completed concurrently or in any order.

 SCHEDULED
 UNSCHEDULED

A = Satisfactory X = Unsatisfactory (Explanation required)		A or X	Observation/Corrective Action Taken
1.	Verify that the roads are accessible.	A	
2.	Verify that the waste unit signs (14) are in acceptable condition, have the correct information and are legible from a distance of 25 feet.	A	
3.	Verify that there are no excavations, digging or construction activities on the 488-DAB cover system.	A	

D-Area Ash Basin (DAB) (488-D) Field Inspection Checklist

Manual: C3
 Procedure: ER-IDS-019-041
 Revision: 3
 Page: 2 of 3

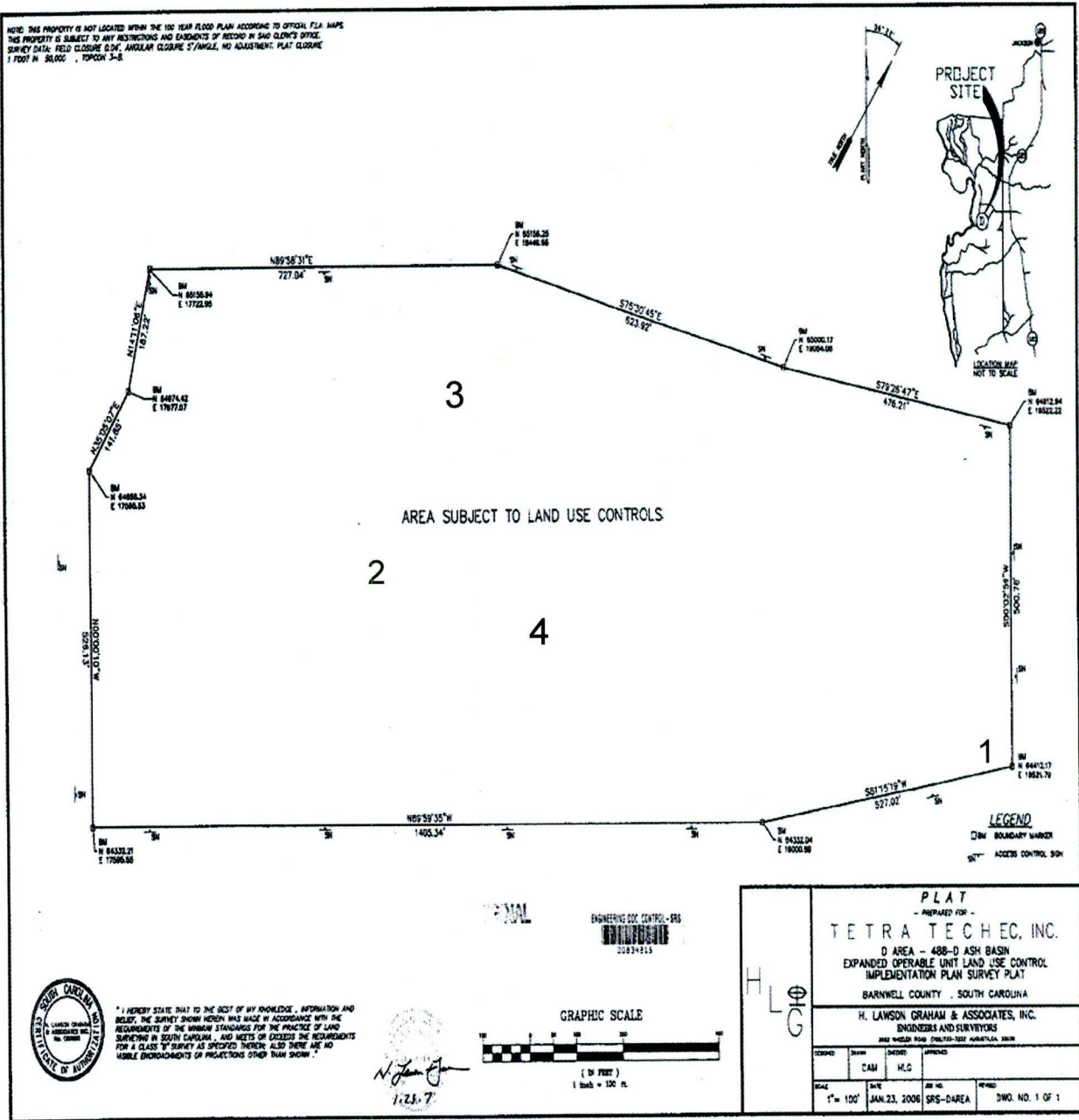
SCHEDULED UNSCHEDULED

A = Satisfactory X = Unsatisfactory (Explanation required)		A or X	Observation/Corrective Action Taken
4.	Verify that the integrity of drainage systems and required land grading for proper drainage is maintained and that they are free of excessive erosion, sediment buildup and any debris restricting water flow.	X	Build-up of thatch on the storm water grates. See Map Note: 1 Reference Maintenance Register: PC-2020-00090
5.	Verify that no woody vegetation is growing on the 488-DAB cover system.	X	Woody Vegetation growing on soil cover See Map Note: 2 Reference Maintenance Register: PC-2020-00091
6.	Verify that grass density of the vegetation cover has no bare spots more than 3 feet by 3 feet in area. The height of the vegetative cover should not impair the visual inspection of the soil cover. This verification will be determined by the inspector.	A	
7.	Verify that survey monuments have not been damaged.	A	
8.	Verify that the soil cover at 488-DAB has no signs of unacceptable erosion or depressions (subsidence).	A	
9.	Verify that signs of burrowing animals on the 488-DAB are not present.	X	Carry over item: Excessive hog damage on the North slope and has continued across the entire cap. See map note: 3 Reference Maintenance Register: PC-2017-00118
10.	Other Active Ant Mounds	X	Active ant mounds on soil cover See map note: 4 Reference Maintenance Register: PC-2020-00092

Inspected By		
Charles P. Carter <i>(Print Name)</i>	<i>Charles P. Carter</i> <i>(Signature)</i>	12/18/2020 <i>(Date)</i>

Review By Post-Closure Manager		
George W. Joyner <i>(Print Name)</i>	<i>George W. Joyner</i> <i>(Signature)</i>	12/21/2020 <i>(Date)</i>

D-AREA ASH BASIN (488-D) MAP



- NOTES:** 1=Build-up of thatch on the storm water grates. Post Closure Maintenance removed thatch.
- 2=Woody Vegetation growing on soil cover. Post Closure Maintenance removed woody vegetation.
- 3=Carry over item: Excessive hog damage on the North slope and has continued across the entire cap. USFS will will make repairs with topsoil, grass seed and straw.
- 4=Active ant mounds on soil cover. Applied 6.0 lbs. of Extinguish Ant Bait.

POST CLOSURE MAINTENANCE REGISTER

Index Number

Unit Name

68 D-AREA ASH BASIN (488-D)

Watershed UPPER THREE RUNS

AHA # AHA-ER-5534
Work Order # N/A
Work Group POST CLOSURE MAINTENANCE
Priority Medium
RCRA NO

Maintenance Number PC-2020-00090 **Maintenance Status** Complete
Inspection Date 12/18/2020 **Chemical Type** NA
Completion Date 12/18/2020 **Chemical Name**
Amount Used

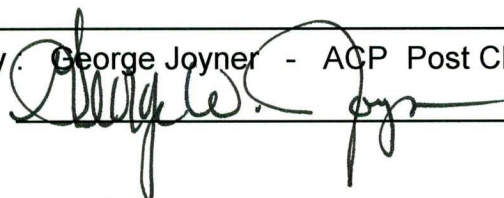
Description Of Maintenance Item
Build-up of thatch on the storm water grates blocking run-off

Maintenance Item Corrected
Removed thatch from drainage grates

Notes New observation

Approved by: George Joyner - ACP Post Closure Manager

Signature



Approval date :

12/21/2020

POST CLOSURE MAINTENANCE REGISTER

Index Number

Unit Name

68 D-AREA ASH BASIN (488-D)

Watershed UPPER THREE RUNS

AHA # AHA-ER-5534

Work Order # N/A

Work Group POST CLOSURE MAINTENANCE

Priority Medium

RCRA NO

Maintenance Number PC-2020-00091

Maintenance Status Complete

Inspection Date 12/18/2020

Chemical Type NA

Completion Date 12/18/2020

Chemical Name

Amount Used

Description Of Maintenance Item

Small woody vegetation growing on soil cover

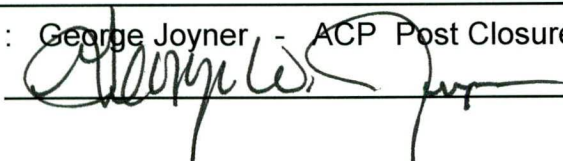
Maintenance Item Corrected

Removed woody vegetation from soil cover

Notes New observation. Corrected on the Spot

Approved by : George Joyner - ACP Post Closure Manager

Signature



Approval date :

12/21/2020

POST CLOSURE MAINTENANCE REGISTER

Index Number

Unit Name

68 D-AREA ASH BASIN (488-D)

Watershed UPPER THREE RUNS

AHA # NA
Work Order # N/A
Work Group POST CLOSURE MAINTENANCE
Priority Medium
RCRA NO

Maintenance Number	PC-2020-00092	Maintenance Status	Complete
Inspection Date	12/18/2020	Chemical Type	Pesticide
Completion Date	12/18/2020	Chemical Name	Extinguish
		Amount Used	6.0 Pounds

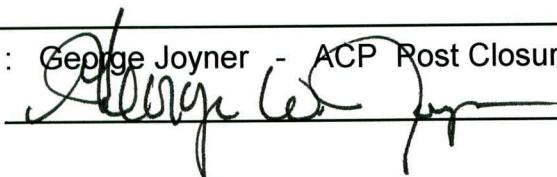
Description Of Maintenance Item
Active ant mounds on waste unit

Maintenance Item Corrected
Applied Ant Bait

Notes New observation

Approved by : George Joyner - ACP Post Closure Manager

Signature



Approval date : 12/21/2020