

**ENVIRONMENTAL COMPLIANCE & AREA COMPLETION PROJECTS (EC&ACP) STANDARD
OPERATING PROCEDURES, VOL. I**
Manual: C3
Procedure: ER-IDS-019-020
Revision: 6
Effective Date: 11/23/2020
Type-Class: Checklist
Page: 1 of 4
**METALLURGICAL LABORATORY HAZARDOUS WASTE MANAGEMENT FACILITY (HWMF) POST
CLOSURE FIELD INSPECTION CHECKLIST**
WORKING COPY

This document is a Working Copy. Prior to start of work, verify this is the latest revision per the Procedure Index.

Charles P. Carter

Verified By

05/11/2021

Date

CAUTION

The Inspector will IMMEDIATELY notify the Post-Closure Manager and Environmental Compliance Authority if there has been a breach or compromise of the institutional controls of this waste unit. This notification will be in accordance with Savannah River Site post-closure inspection procedures.

NOTE

1. Manual C3, Volume 1, Procedure ER-SOP-019, Waste Unit and IOU Inspection and Maintenance, will be referred to for inspection details.
2. Monitoring wells associated with this waste unit are maintained in accordance with EC&ACP monitoring well procedures located at ACP Homepage.
3. Steps in this checklist may be completed concurrently or in any order.

SCHEDULED

UNSCHEDULED

A = Satisfactory X = Unsatisfactory (Explanation required)		A or X	Observation/Corrective Action Taken
1.	VERIFY roads to waste unit are accessible.	A	
2.	VERIFY signs on the fence are in acceptable condition and are legible from a distance of 25 feet. Signs must include "Danger Unauthorized Personnel Keep Out" and include Post Closure Manager and Savannah River Site Operations Center contact information.	A	

Metallurgical Laboratory Hazardous Waste Management Facility (HWMF) Post Closure Field Inspection Checklist

Manual: C3
 Procedure: ER-IDS-019-020
 Revision: 6
 Page: 2 of 4

SCHEDULED UNSCHEDULED

A = Satisfactory X = Unsatisfactory (Explanation required)	A or X	Observation/Corrective Action Taken	
3.	VERIFY fence is in good condition (e.g., shows no signs of serious wear, no vegetative growth) and unattended gates are locked.	A	
4.	CHECK the soil cover and side slopes for signs of erosion, depression (subsidence) and evidence of burrowing animals.	X	Active Ant Mounds on Soil Cover See Map Note: 1 Reference Maintenance Register: PC-2021-00038
5.	CHECK the integrity of drainage ditches for the presence of excessive erosion, sediment buildup, and any debris restricting water flow.	A	
6.	VERIFY that no woody vegetation is growing on the soil cover, AND REMOVE OR IDENTIFY as needed.	A	
7.	VISUALLY CHECK vegetative cover for grass density with no bare spots more than 3 feet by 3 feet in area. The height of the vegetation should not impair visual inspection of the soil cover. This will be determined by the Inspector.	A	
8.	VISUALLY PERFORM a condition check of the survey benchmarks for damage and visibility.	A	
9.	VERIFY annual topographic/subsidence survey has been performed by end of June for current year, AND VERIFY copies of survey results are in EC&ACP Document Control Center.	A	Completed 07/27/2020

Metallurgical Laboratory Hazardous Waste Management Facility (HWMF) Post Closure Field Inspection Checklist

Manual: C3
 Procedure: ER-IDS-019-020
 Revision: 6
 Page: 3 of 4

SCHEDULED UNSCHEDULED

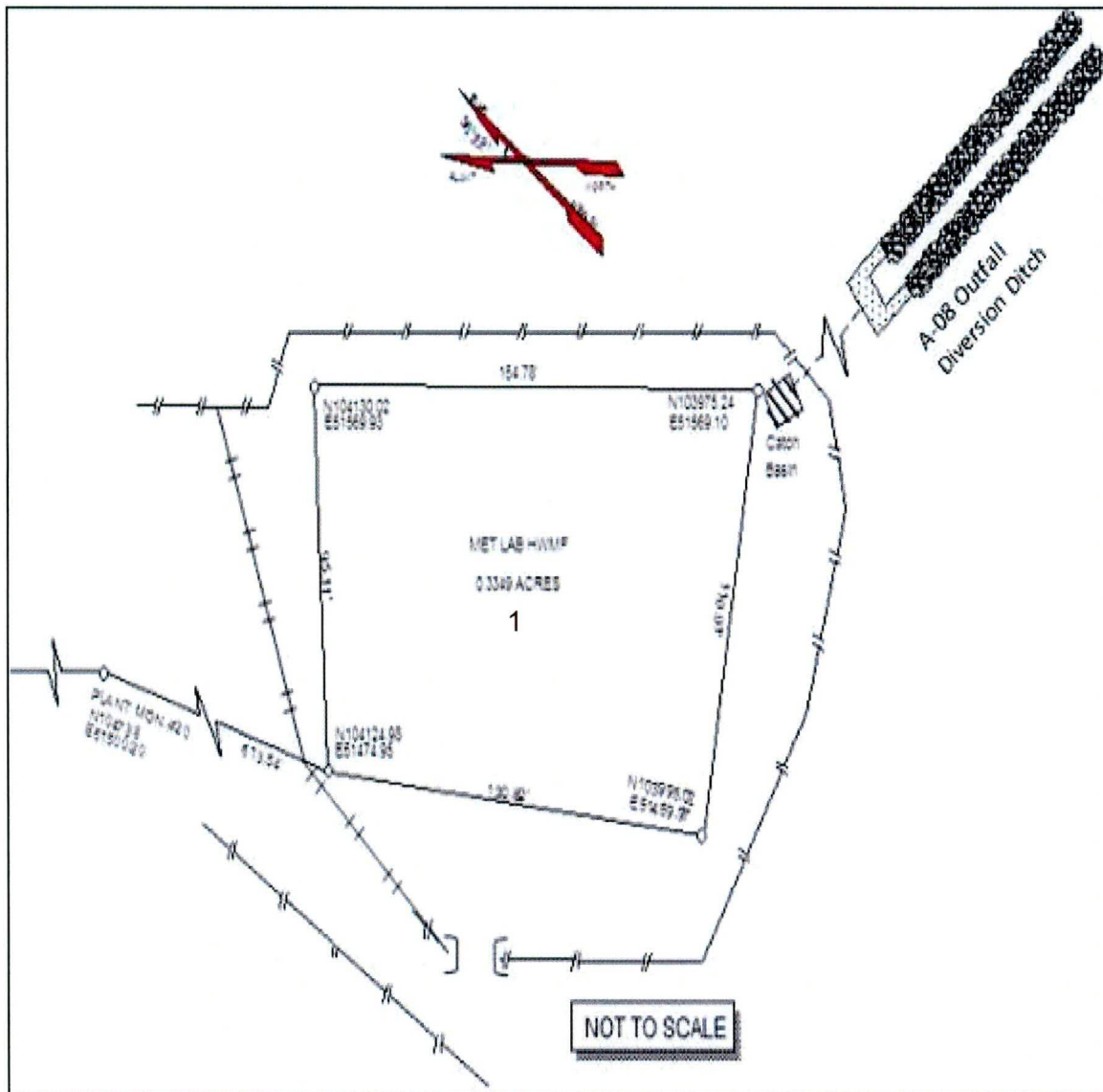
A = Satisfactory X = Unsatisfactory (Explanation required)	A or X	Observation/Corrective Action Taken
10.	A	INSPECT A-08 Outfall Diversion Ditch for the presence of erosion and debris restricting water flow.
11.		Other
NO FURTHER ENTRIES		

CPC 05/11/2021

Inspected By		
Charles P. Carter <small>(Print Name)</small>	<i>Charles P. Carter</i> <small>(Signature)</small>	05/11/2021 <small>(Date)</small>

Reviewed By Post-Closure Manager		
George W. Joyner <small>(Print Name)</small>	<i>George W. Joyner</i> <small>(Signature)</small>	5/13/21 <small>(Date)</small>

Map of Metallurgical Laboratory HWMF



NOTES: 1=Active Ant Mounds on soil cover. Applied .25 lbs. of extinguish ant bait.

POST CLOSURE MAINTENANCE REGISTER

Index Number

Unit Name

15 METALLURGICAL LABORATORY HAZARDOUS WASTE MANAGEMENT FACILITY - 904-110G

Watershed UPPER THREE RUNS

AHA # NA
Work Order # NA
Work Group POST CLOSURE MAINTENANCE
Priority Medium
RCRA YES

Maintenance Number	PC-2021-00038	Maintenance Status	Complete
Inspection Date	5/11/2021	Chemical Type	Pesticide
Completion Date	5/11/2021	Chemical Name	Extinguish
		Amount Used	.25 Pound

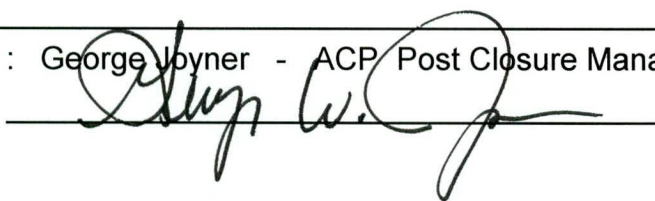
Description Of Maintenance Item
Active ant mounds on waste unit

Maintenance Item Corrected
Applied Extinguish pesticide

Notes New observation

Approved by : George Joyner - ACP Post Closure Manager

Signature



Approval date :

~~112~~ 5/13/21