

ENVIRONMENTAL COMPLIANCE & AREA COMPLETION PROJECTS (EC&ACP) STANDARD OPERATING PROCEDURES, VOL. I

Manual: C3
 Procedure: ER-IDS-019-020
 Revision: 5
 Effective Date: 08/30/2016
 Type-Class: Form
 Page: 1 of 5

METALLURGICAL LABORATORY HAZARDOUS WASTE MANAGEMENT FACILITY (HWMF) POST CLOSURE FIELD INSPECTION CHECKLIST

WORKING COPY

This document is a Working Copy. Prior to start of work, verify this is the latest revision per the Procedure Index.

Charles P. Carter

Verified By

11-16-18

Date

CAUTION

The Inspector shall IMMEDIATELY notify the Post-Closure Manager and Environmental Compliance Authority if there has been a breach or compromise of the institutional controls of this waste unit. This notification shall be in accordance with Savannah River Site post-closure inspection procedures.

NOTE

1. Manual C3, ER-SOP-019, *Waste Unit Inspection and Maintenance*, shall be referred to for inspection details.
2. Monitoring wells associated with this waste unit are maintained in accordance with EC&ACP monitoring well procedures.
3. Steps in this checklist may be completed concurrently or in any order.

SCHEDULED

UNSCHEDULED

A = Satisfactory	X = Unsatisfactory (Explanation required)	A or X	Observation/Corrective Action Taken
1.	Verify roads are accessible to closed site.	X	ROAD AT SOUTH END OF CAP NEEDS CUTTING BACK SEE MAP NOTE: ① REF. MAINT. REGISTER PL-2018-00123
2.	Check fence/barricade for presence of signs "Danger Unauthorized Personnel Keep Out". Confirm Post Closure Manager and Savannah River Site Operations Center Emergency Contact sign has current information and is in good condition.	A	

**Metallurgical Laboratory Hazardous Waste Management Facility (HWMF) Post Closure Field
Inspection Checklist**

Manual: C3
 Procedure: ER-IDS-019-020
 Revision: 5
 Page: 2 of 5

 SCHEDULED

 UNSCHEDULED

A = Satisfactory X = Unsatisfactory (Explanation required)	A or X	Observation/Corrective Action Taken	
3.	Verify fence wire, posts, gates, and other areas of fence are intact and in good condition (e.g., shows no signs of serious wear).	A	
4.	Check for excessive vegetation growing over fences, which may obstruct warning signs or visibility of closure cover.	A	
5.	Walk across the closure cover and check for erosion, abnormal soil cracks and evidence of burrowing animals.	A	
6.	Check integrity of drainage ditches inside and outside fenced areas for erosion and presence of soil sediment or debris restricting water flow. Standing water not to exceed 30 feet in length.	A	
7.	Visually check cover and side slopes for any subsidence/ depressions.	A	
8.	Visually check vegetative cover for grass density with no bare spots more than 3 feet in diameter. There should be no woody vegetation or shrubs growing on the Closure cover. The height of vegetative cover should not impair visual inspection of closure. This will be determined by the Post Closure Inspector.	A	
9.	Visually perform a condition check of the survey monitor or benchmarks for damage and visibility.	A	
10.	Verify unattended gates are locked to prevent unauthorized entry.	A	

**Metallurgical Laboratory Hazardous Waste Management Facility (HWMF) Post Closure Field
Inspection Checklist**

 Manual: C3
 Procedure: ER-IDS-019-020
 Revision: 5
 Page: 3 of 5

 SCHEDULED

 UNSCHEDULED

A = Satisfactory X = Unsatisfactory (Explanation required)	A or X	Observation/Corrective Action Taken
11. Check side slopes for signs of slumping and channels or excessive erosion.	A	
12. Verify annual topographic/subsidence survey has been performed by end of June for current year. Verify copies of survey results are in EC&ACP Document Control Center.	A	Survey Complete 5-1-2018
13. The Inspector shall verify in January, April, July, and October, the previous "Quarterly Monitoring Well Inspection Summary Report" has been sent to EC&ACP Document Control Center. This report can be obtained from Post Closure Well Maintenance Group.		
14. Inspect A-008 Diversion Ditch for the presence of erosion and debris restricting water flow.	X	CARRY OVER ITEM: VEGETATION IN A-008 DIVERSION DITCH NEEDS HERBICIDE APPLIED. SEE MAP NOTE (2) REF. MAINT. REGISTER PL-2018-00049.
15. Verify Carolina Bay "Danger Unauthorized Personnel Keep Out" signs (11) are posted and are legible from a distance of 25 feet.	X	SIGN ON THE WEST SIDE NEEDS MOWING AROUND. SEE MAP NOTE (3) REF. MAINT. REGISTER PL-2018-00124
16. Other A-008 DIVERSION DITCH ACTIVE ANT MOUNDS ON SOIL COVER	X	LIMBS NEED TRIMMING BACK. SEE MAP NOTE (4) REF. MAINT REG. PL-2018-00125 SEE MAP NOTE (5) REF. MAINT REGISTER PL-2018-00126

Inspected By

CHARLES P. CARTER (Print Name)	Charles P. Carter (Signature)	11-16-18 (Date)
-----------------------------------	----------------------------------	--------------------

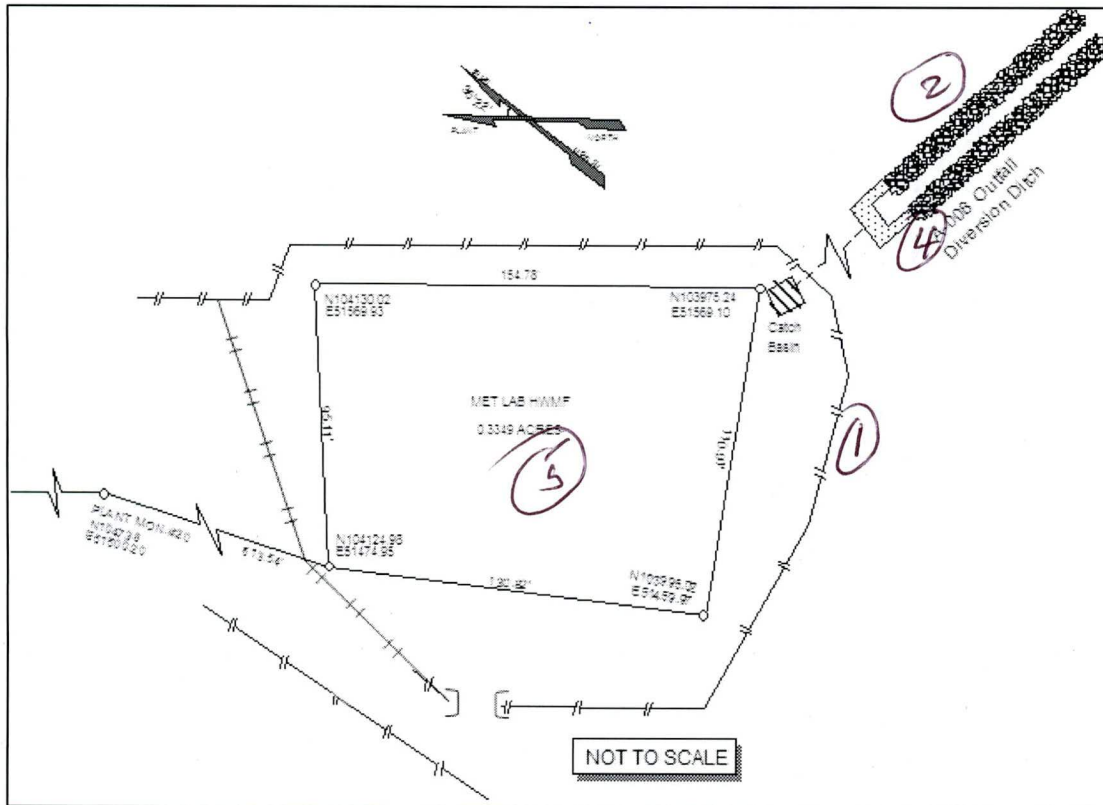
Review By Post-Closure Manager

George W. Joyner (Print Name)	George W. Joyner (Signature)	12/3/18 (Date)
----------------------------------	---------------------------------	-------------------

Metallurgical Laboratory Hazardous Waste Management
Facility (HWMF) Post Closure Field Inspection Checklist

Manual: C3
Procedure: ER-IDS-019-020
Revision: 5
Page: 4 of 5

Map of Metallurgical Laboratory HWMF



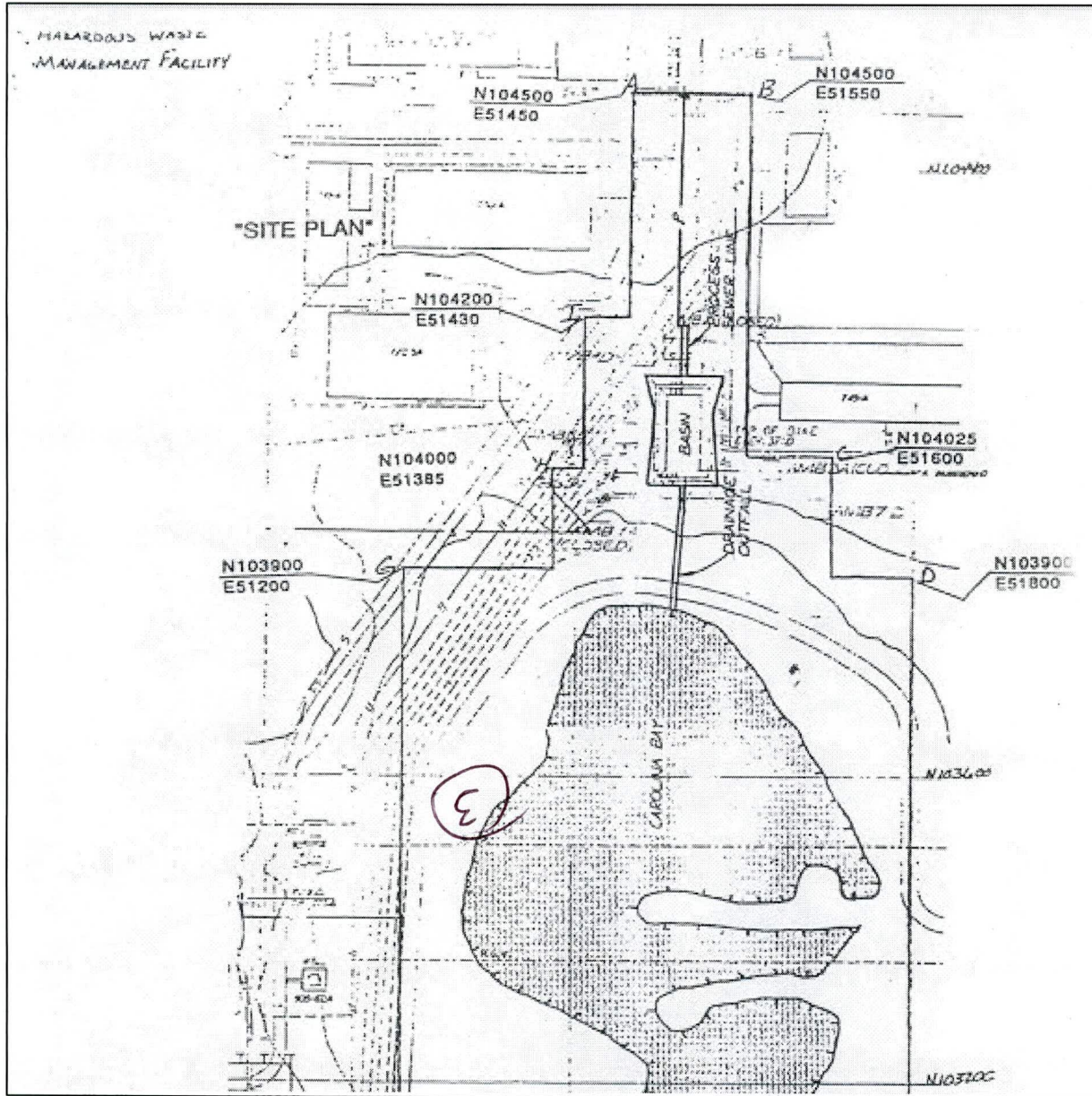
NOTES: (1) = ROAD AT SOUTH END ON CAP NEEDS CUTTING BACK, USES WILL CUT BACK LIMBS (2) CARRY OVER ITEM: VEGETATION IN THE A-008 DIVERSION DITCH NEEDS HERBICIDE APPLIED, USES WILL APPLY HERBICIDE. (4) = LIMBS NEED TRIMMING BACK AT THE A-008 DIVERSION DITCH, USES WILL TRIM BACK. (3) = ACTIVE ANT MOUNDS ON SOIL COVER, APPLIED 1.0 lb OF EXTINGUISH ANT BAIT.

CPC 11-16-18

Metallurgical Laboratory Hazardous Waste Management Facility (HWMF) Post Closure Field Inspection Checklist

Manual: C3
Procedure: ER-IDS-019-020
Revision: 5
Page: 5 of 5

Map of Map of Metallurgical Laboratory HWMF (Carolina Bay)



NOTES: (3) = DANGER SIGN NEEDS MOWING IN FRONT OF + AROUND. SIGN IS LOCATED ON THE WEST SIDE OF THE CAROLINA BAY. USES WILL MOW.

~~NO FURTHER ENTRIES~~

PL 11-16-18

POST CLOSURE MAINTENANCE REGISTER

Index Number
Unit Name

15 METALLURGICAL LABORATORY HAZARDOUS WASTE MANAGEMENT FACILITY - 904-110G

Watershed UPPER THREE RUNS

AHA # NA
 Work Order # NA
 Work Group POST CLOSURE MAINTENANCE
 Priority Medium
 RCRA YES

Maintenance Number	PC-2018-00126	Maintenance Status	Complete
Inspection Date	11/16/2018	Chemical Type	Pesticide
Completion Date	11/16/2018	Chemical Name	Extinguish
		Amount Used	1.0 Pounds

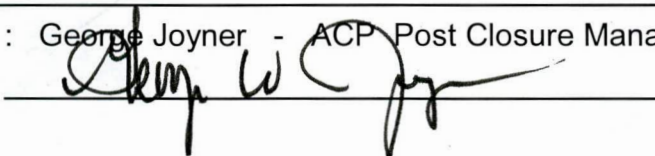
Description Of Maintenance Item
 Active ant mounds on waste unit

Maintenance Item Corrected
 Applied Extinguish pesticide

Notes New observation

Approved by : George Joyner - ACP Post Closure Manager

Signature



Approval date :

12/3/18

POST CLOSURE MAINTENANCE REGISTER

Index Number
Unit Name

15 METALLURGICAL LABORATORY HAZARDOUS WASTE MANAGEMENT FACILITY - 904-110G

Watershed UPPER THREE RUNS

AHA # NA
 Work Order # N/A
 Work Group USFS
 Priority Medium
 RCRA YES

Maintenance Number PC-2018-00123 **Maintenance Status** Complete
Inspection Date 11/16/2018 **Chemical Type** NA
Completion Date 1/7/2019 **Chemical Name**
 Amount Used

Description Of Maintenance Item

Vegetation needs cutting back on the road at the South end of cap.

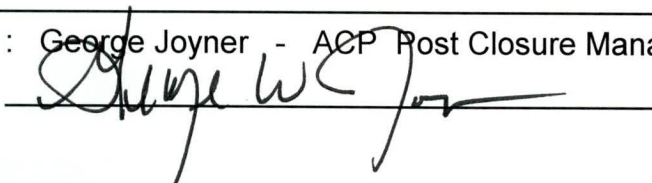
Maintenance Item Corrected

USFS will cut road back on the South end of cap.

Notes New observation.

Approved by : George Joyner - ACP Post Closure Manager

Signature



Approval date :

1/24/19

POST CLOSURE MAINTENANCE REGISTER

Index Number
Unit Name

15 METALLURGICAL LABORATORY HAZARDOUS WASTE MANAGEMENT FACILITY - 904-110G

Watershed UPPER THREE RUNS

AHA # NA
 Work Order # N/A
 Work Group POST CLOSURE MAINTENANCE
 Priority Medium
 RCRA YES

Maintenance Number PC-2018-00124 **Maintenance Status** Complete
Inspection Date 11/16/2018 **Chemical Type** NA
Completion Date 1/8/2019 **Chemical Name**
 Amount Used

Description Of Maintenance Item

Vegetation blocking Carolina Bay sign on the West side

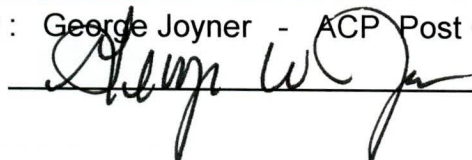
Maintenance Item Corrected

USFS will mow vegetation around sign

Notes New observation.

Approved by : George Joyner - ACP Post Closure Manager

Signature



Approval date :

2/19/19

POST CLOSURE MAINTENANCE REGISTER

Index Number
Unit Name

15 METALLURGICAL LABORATORY HAZARDOUS WASTE MANAGEMENT FACILITY - 904-110G

Watershed UPPER THREE RUNS

AHA # NA
 Work Order # N/A
 Work Group USFS
 Priority Medium
 RCRA YES

Maintenance Number PC-2018-00125 **Maintenance Status** Complete
Inspection Date 11/16/2018 **Chemical Type** NA
Completion Date 1/8/2019 **Chemical Name**
 Amount Used

Description Of Maintenance Item

Vegetation (limbs) need cutting back A-008 Diversion Ditch

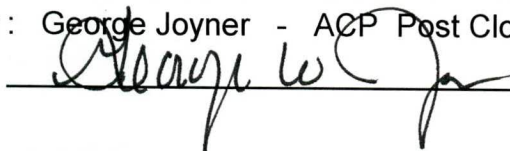
Maintenance Item Corrected

USFS cut and clear limbs at Diversion drainage ditch

Notes New observation.

Approved by : George Joyner - ACP Post Closure Manager

Signature



Approval date :

2/19/19