

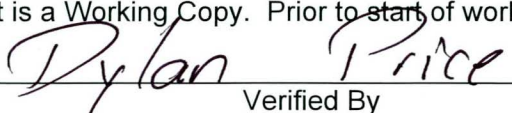
**ENVIRONMENTAL COMPLIANCE & AREA COMPLETION PROJECTS (EC&ACP) STANDARD OPERATING PROCEDURES, VOL. I**

Manual: C3  
 Procedure: ER-IDS-019-024  
 Revision: 6  
 Effective Date: 01/22/2019  
 Type-Class: Checklist  
 Page: 1 of 3

**FORD BUILDING SEEPAGE BASIN OPERABLE UNIT (BLDG. 904-91G) FIELD INSPECTION CHECKLIST**

**WORKING COPY**

This document is a Working Copy. Prior to start of work, verify this is the latest revision per the Procedure Index.

  
 \_\_\_\_\_ 08/10/24  
 Verified By Date

**CAUTION**

The Inspector shall IMMEDIATELY notify the Post-Closure Manager and Environmental Compliance Authority if there has been a breach or compromise of the institutional controls of this waste unit. This notification shall be in accordance with Savannah River Site post-closure inspection procedures.

**NOTE**

1. Manual C3, Vol. I, ER-SOP-019, Waste Unit Inspection and Maintenance, shall be referred to for inspection details.
2. Monitoring wells associated with this waste unit are maintained in accordance with EC&ACP monitoring well procedures.
3. Steps in this checklist may be completed concurrently or in any order.

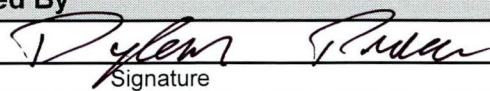
SCHEDULED                       UNSCHEDULED

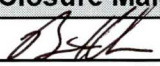
A = Satisfactory X = Unsatisfactory (Explanation required)		A or X	Observation/Corrective Action Taken
1.	Verify roads are accessible.	A	
2.	Verify waste unit signs (4) are in acceptable condition, have correct information and are legible from a distance of 25 feet.	A	
3.	Verify there is <u>no</u> excavating, digging, or construction activity on soil cover.	A	

Ford Building Seepage Basin Operable Unit (Bldg. 904-91G) Field Inspection Checklist

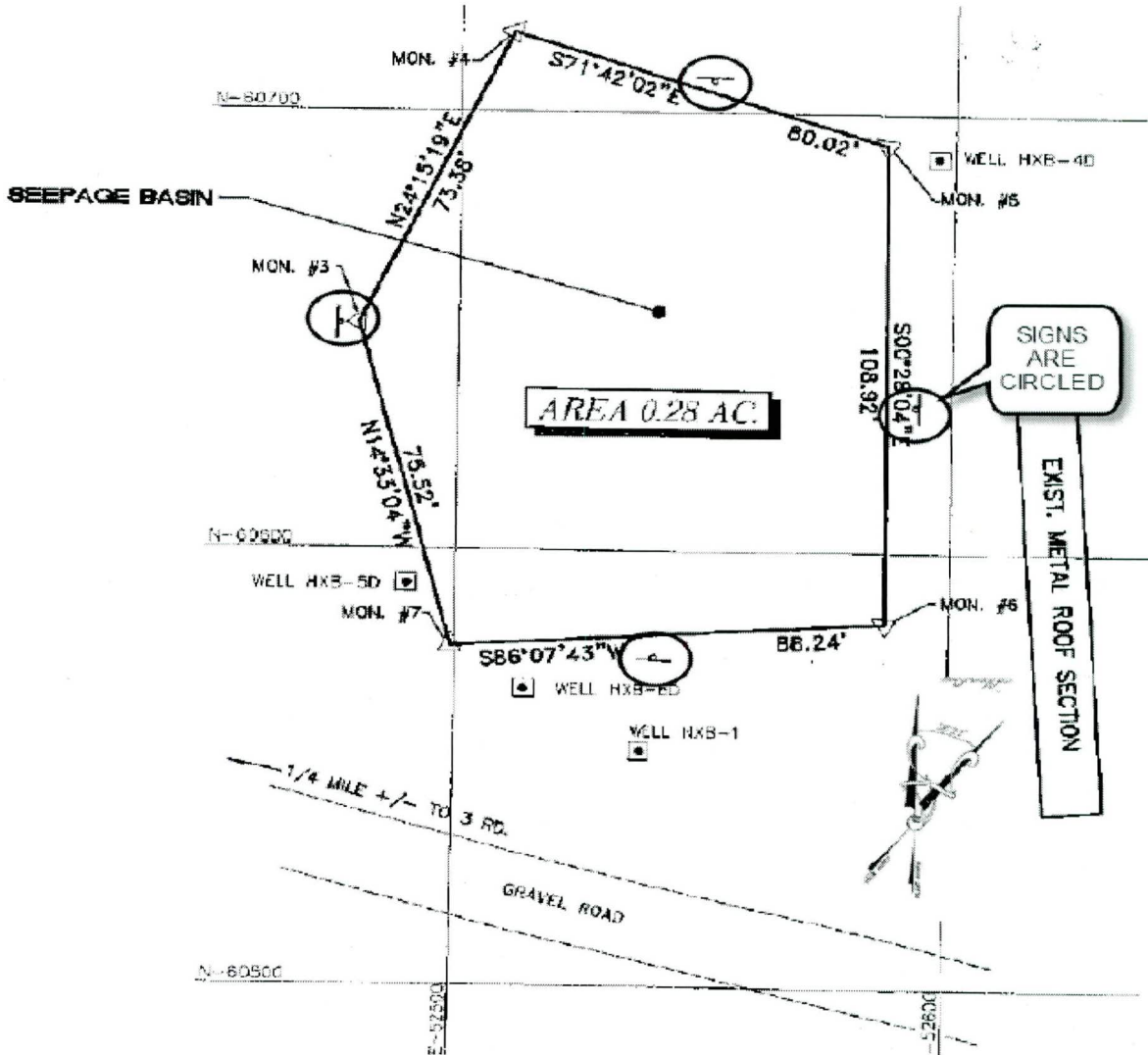
SCHEDULED  UNSCHEDULED

A = Satisfactory X = Unsatisfactory (Explanation required)		A or X	Observation/Corrective Action Taken
4.	Verify <b>no</b> woody vegetation is growing on the soil cover. Remove or identify as needed.	A	
5.	Visually <b>check</b> vegetative cover for grass density with <b>no</b> bare spots more than 3 feet by 3 feet in the area. The height of vegetation should <b>not</b> impair visual inspection of the soil cover. This will be determined by the Inspector.	A	
6.	<b>Check</b> soil cover for signs of erosion or depressions (subsidence).	A	
7.	<b>Check</b> for signs of burrowing animals.	A	
8.	Other none	A	

Inspected By		
Dylan Price		08/10/24
Print Name	Signature	Date

Review By Post-Closure Manager		
Brian Hanshew		8/27/24
Print Name	Signature	Date

Map of Ford Building Seepage Basin Operable Unit (Bldg. 904-91G)



NOTES: Inspected per ER-SOP-019, Section 5.1

*No Further Entries*

*DP 8/16/24*