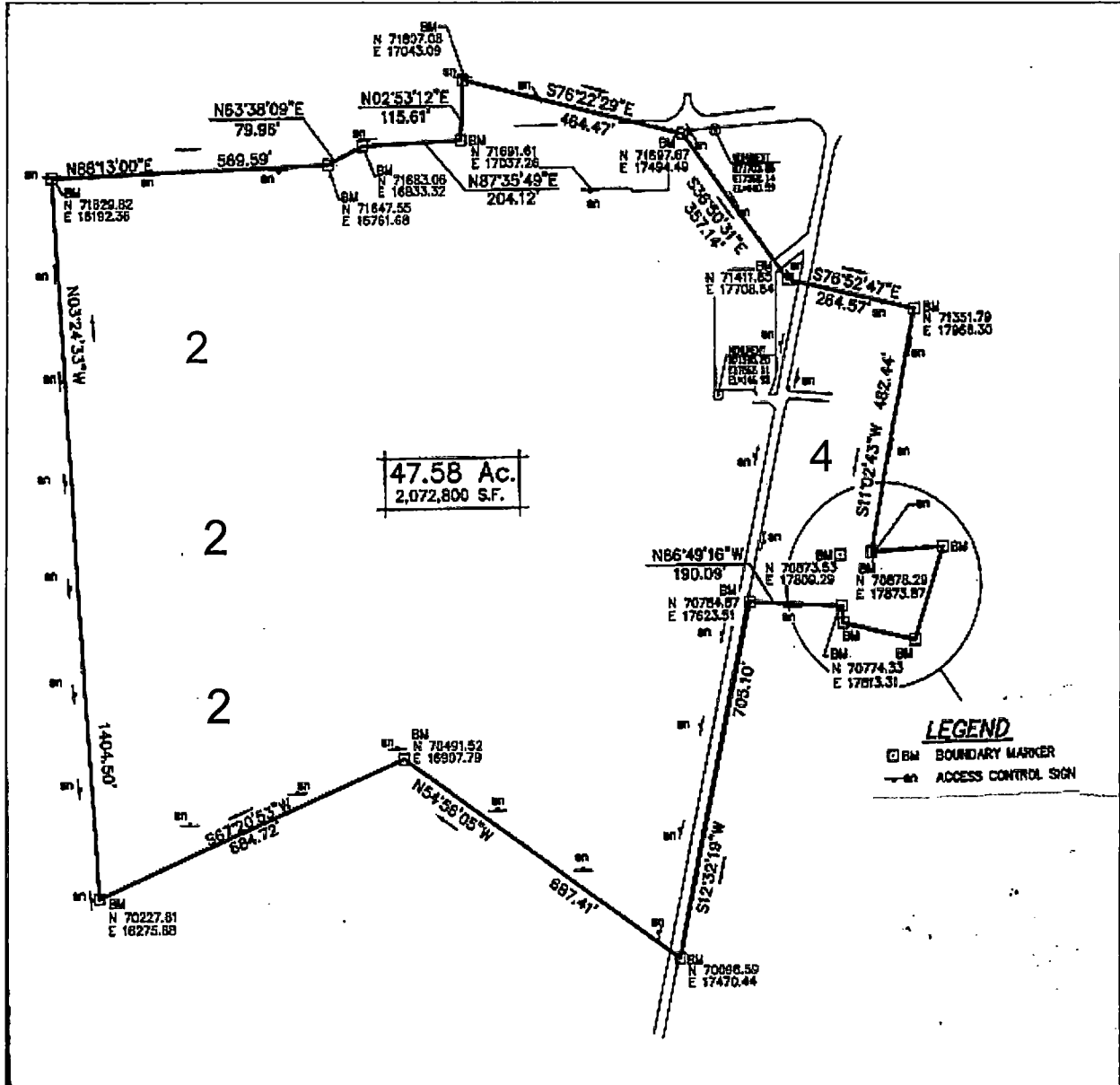


T-Area Operable Unit (TAOU) Field Inspection Checklist

Manual: C3
 Procedure: ER-IDS-019-032
 Revision: 6
 Page: 4 of 4

Map of T-Area Operable Unit (TAOU)



NOTES 2=Carry Over Item: Outlet side of drainage ditches has vegetation that needs removal. USFS will cut and remove vegetation from outlet side of drianage ditches.

4=Wild hog damage (rooting) on the East side of A-4.7 road. USFS will repair with topsoil, grass seed and straw

NO Further Entries

VP a/jad/edp

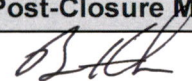
T-Area Operable Unit (TAOU) Field Inspection Checklist

Manual: C3
 Procedure: ER-IDS-019-032
 Revision: 6
 Page: 3 of 4

SCHEDULED UNSCHEDULED

A = Satisfactory X = Unsatisfactory (Explanation required)		A or X	Observation/Corrective Action Taken
9.	Visually inspect survey (benchmarks) to ensure they are not damaged.	A	
10.	Other NONE	A	

Inspected By		
Dylan Price Print Name	 Signature	9/19/2024 Date

Review By Post-Closure Manager		
Brian Hanshew Print Name	 Signature	10/9/2024 Date

T-Area Operable Unit (TAOU) Field Inspection Checklist

Manual: C3
 Procedure: ER-IDS-019-032
 Revision: 6
 Page: 2 of 4

 SCHEDULED

 UNSCHEDULED

A = Satisfactory X = Unsatisfactory (Explanation required)	A or X	Observation/Corrective Action Taken
2. Verify waste unit signs (35) are in acceptable condition, have correct information, and are legible from a distance of 25 feet. Refer to WSRC-RP-2006-4005, Post-Construction Report (PCR) for the T-Area Operable Unit (TAOU) (U), for source document.	A	
3. Verify there is <u>no</u> unauthorized digging, excavation, or construction activities on soil cover.	A	
4. Verify integrity of any drainage ditches and required land grading for proper drainage is maintained and they are free of excessive erosion, sediment build-up, and any debris restricting water flow.	X	Carry Over Item: Outlet side of drainage ditches has vegetation that needs removal See map note: 2. Reference Maintenance Register: PC-2021-00091
5. Verify <u>no</u> woody vegetation is growing on soil cover. Remove or identify as needed.	A	
6. Visually check vegetative cover for grass density with <u>no</u> bare spots more than 3 feet by 3 feet in area. The height of vegetation should not impair the visual inspection of soil cover. This will be determined by the Inspector.	A	
7. Check soil cover for signs of erosion or depressions (subsidence).	A	
8. Check for signs of burrowing or mounding animals.	X	Carry over item: Wild hog damage (rooting) on soil cover See Map Note: 4 Reference Maintenance Register PC-2022-00094

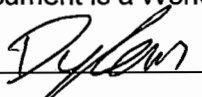
ENVIRONMENTAL COMPLIANCE & AREA COMPLETION PROJECTS (EC&ACP) STANDARD OPERATING PROCEDURES, VOL. I

Manual: C3
Procedure: ER-IDS-019-032
Revision: 6
Effective Date: 4/08/2019
Type-Class: Checklist
Page: 1 of 4

T-AREA OPERABLE UNIT (TAOU) FIELD INSPECTION CHECKLIST

WORKING COPY

This document is a Working Copy. Prior to start of work, verify this is the latest revision per the Procedure Index.


09/19/2024

 Verified By Date

CAUTION

The Inspector shall IMMEDIATELY notify the Post-Closure Manager and Environmental Compliance Authority if there has been a breach or compromise of the institutional controls of this waste unit. This notification shall be in accordance with Savannah River Site post closure inspection procedures.

NOTE

1. Manual C3, Vol. I, ER-SOP-019, Waste Unit Inspection and Maintenance, shall be referred to for inspection details.
2. Monitoring wells associated with this waste unit are maintained in accordance with EC&ACP monitoring well procedures.
3. Steps in this checklist may be completed concurrently or in any order.
4. Inspection activities associated with the engineered cover system over the old TNX Seepage Basin (904-076G), TNX Burial Ground (643-5G), and the cover system for the new TNX Seepage Basin (904-102G) are integrated into the T-Area Operable Unit. The old TNX Seepage Basin (904-076G), TNX Burial Ground (643-5G), and new TNX Seepage Basin (904-102G) were closed as part of the TNX Operable Unit.

SCHEDULED **UNSCHEDULED**

A = Satisfactory	A or X	Observation/Corrective Action Taken
X = Unsatisfactory (Explanation required)		
1. Verify roads are accessible.	A	