

ENVIRONMENTAL COMPLIANCE & AREA COMPLETION PROJECTS (EC&ACP) STANDARD
OPERATING PROCEDURES, VOL. I

Manual: C3
Procedure: ER-IDS-019-025
Revision: 5
Effective Date: 06/02/2016
Type-Class: Form
Page: 1 of 3

L-REACTOR SEEPAGE BASIN (BLDG. 904-64G) FIELD INSPECTION CHECKLIST

WORKING COPY

This document is a Working Copy. Prior to start of work, verify this is the latest revision per the Procedure Index.

Charles P. Carter
Verified By

06/21/2021
Date

CAUTION

The Inspector shall IMMEDIATELY notify the Post-Closure Manager and Environmental Compliance Authority if there has been a breach or compromise of the institutional controls of this waste unit. This notification shall be in accordance with Savannah River Site post-closure inspection procedures.

NOTE

1. Manual C3, ER-SOP-019, *Waste Unit Inspection and Maintenance*, shall be referred to for inspection details.
2. Monitoring wells associated with this waste unit are maintained in accordance with EC&ACP Monitoring Well Procedures.
3. Steps in this checklist may be completed concurrently or in any order.

SCHEDULED

UNSCHEDULED

A = Satisfactory X = Unsatisfactory (Explanation required)		A or X	Observation/Corrective Action Taken
1.	Verify roads to waste unit are accessible.	A	
2.	Verify that the waste unit signs (6) and the underground piping signs (6) are in acceptable condition, have the correct information and are legible from a distance of 25 feet.	A	

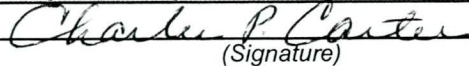
L-Reactor Seepage Basin (Bldg. 904-64G) Field Inspection Checklist

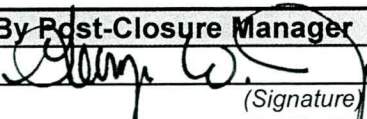
Manual: C3
 Procedure: ER-IDS-019-025
 Revision: 5
 Page: 2 of 3

SCHEDULED UNSCHEDULED

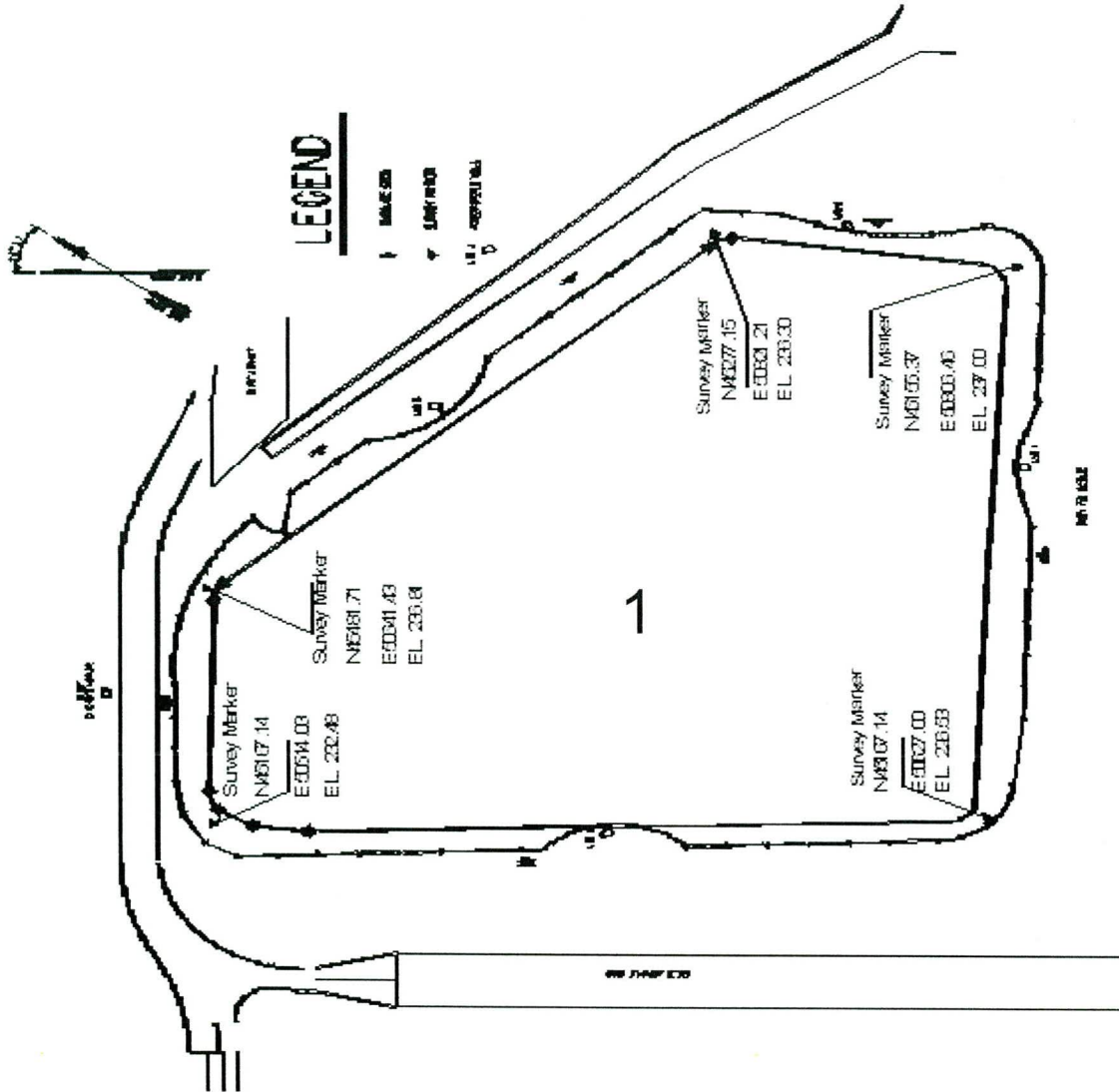
A = Satisfactory X = Unsatisfactory (Explanation required)	A or X	Observation/Corrective Action Taken
3. Verify that the fence is in good condition and the gate is locked.	A	
4. Verify that there is no excavating, digging or construction activity on the soil cover or over the subsurface process piping (identified by signs).	A	
5. Check the integrity of the drainage ditches for the presence of excessive erosion, sediment buildup and debris restricting water flow.	A	
6. Verify that no woody vegetation is growing on the soil cover. Remove or identify as needed.	A	
7. Visually check vegetative cover for grass density with no bare spots more than 3 feet by 3 feet in area. The height of the vegetation should not impair the visual inspection of the soil cover. This will be determined by the Inspector.	A	
8. Check the soil cover for signs of erosion or depressions (subsidence).	A	
9. Check for evidence of burrowing animals.	X	Active Ant Mounds on Soil Cover See Map Note: 1 Reference Maintenance Register: PC-2021-00053
10. Other	NO FURTHER ENTRIES	

CPC 06/21/2021

Inspected By		
Charles P. Carter <i>(Print Name)</i>	 <i>(Signature)</i>	06/21/2021 <i>(Date)</i>

Review By Post-Closure Manager		
George W. Joyner <i>(Print Name)</i>	 <i>(Signature)</i>	6/21/21 <i>(Date)</i>

MAP L-REACTOR SEEPAGE BASIN (BLDG. 904-64G)



NOTES: 1= Active ant mounds on soil cover. Applied 0.25 lbs. of Extinguish ant bait.

NO FURTHER ENTRIES

POST CLOSURE MAINTENANCE REGISTER

Index Number

Unit Name

306 L -AREA REACTOR SEEPAGE BASIN - 904-64G

Watershed STEEL CREEK

AHA # AHA-ER-5534
Work Order # NA
Work Group POST CLOSURE MAINTENANCE
Priority Medium
RCRA NO

Maintenance Number PC-2021-00053 Maintenance Status Complete
Inspection Date 6/21/2021 Chemical Type Pesticide
Completion Date 6/21/2021 Chemical Name Extinguish
Amount Used 0.25 Pounds

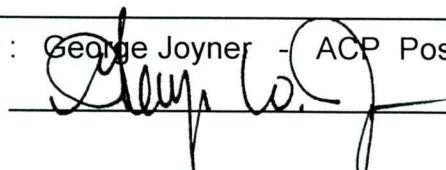
Description Of Maintenance Item
Active ant mounds on waste unit

Maintenance Item Corrected
Applied Extinguish pesticide

Notes New observation

Approved by : George Joyner - ACP Post Closure Manager

Signature



Approval date :

6/21/21