

**ENVIRONMENTAL COMPLIANCE & AREA COMPLETION PROJECTS (EC&ACP) STANDARD
OPERATING PROCEDURES, VOL. I**
Manual: C3
Procedure: ER-IDS-019-003
Revision: 8
Effective Date: 06/02/2016
Type-Class: Form
Page: 1 of 3
D-AREA BURNING/RUBBLE PITS (BLDGS. 431-D AND 431-1D) FIELD INSPECTION CHECKLIST
WORKING COPY

This document is a Working Copy. Prior to start of work, verify this is the latest revision per the Procedure Index.

Charles P. Carter

Verified By

7-16-18

Date

CAUTION

The Inspector shall IMMEDIATELY notify the Post-Closure Manager and Environmental Compliance Authority if there has been a breach or compromise of the institutional controls of this waste unit. This notification shall be in accordance with Savannah River Site post-closure inspection procedures.

NOTE

1. Manual C3, ER-SOP-019, *Waste Unit Inspection and Maintenance*, shall be referred to for inspection details.
2. Monitoring wells associated with this waste unit are maintained in accordance with EC&ACP Monitoring Well Procedures.
3. Steps in this checklist may be completed concurrently or in any order.


SCHEDULED

UNSCHEDULED

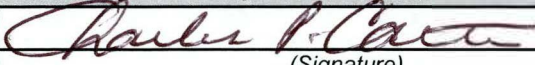
A = Satisfactory		A or X	Observation/Corrective Action Taken
X = Unsatisfactory (Explanation required)			
1.	Verify roads to waste unit are accessible.	A	
2.	Verify that the waste unit signs (4) are in acceptable condition, have the correct information* and are legible from a distance of 25 feet Refer to Manual C1, Procedure ER-AP-127, <i>ACP Waste Unit Field Inspection and Maintenance</i> .	X	TWO (2) WASTE UNIT SIGNS ARE FADED AND NEED REPLACEMENT. SEE MAP NOTE (D) REF. MAINT REGISTER PC-2018-00074

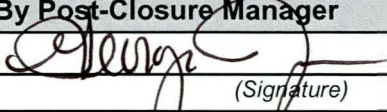
Manual: C3
 Procedure: ER-IDS-019-003
 Revision: 8
 Page: 2 of 3

D-Area Burning/Rubble Pits (Bldgs. 431-D And 431-1D) Field Inspection Checklist

SCHEDULED UNSCHEDULED

A = Satisfactory X = Unsatisfactory (Explanation required)	A or X	Observation/Corrective Action Taken
3. Verify that there is no excavating, digging or construction activity on the soil cover.	A	
4. Verify that no woody vegetation is growing on the soil cover. Remove or identify as needed.	A	
5. Visually check vegetative cover for grass density with no bare spots more than 3 feet by 3 feet in area. The height of the vegetation should not impair the visual inspection of the soil cover. This will be determined by the Inspector.	A	
6. Check the soil cover for signs of erosion or depressions (subsidence).	A	
7. Check for signs of burrowing animals.	A	
8. Other		NO FURTHER ENTRIES CPL. 7-16-18

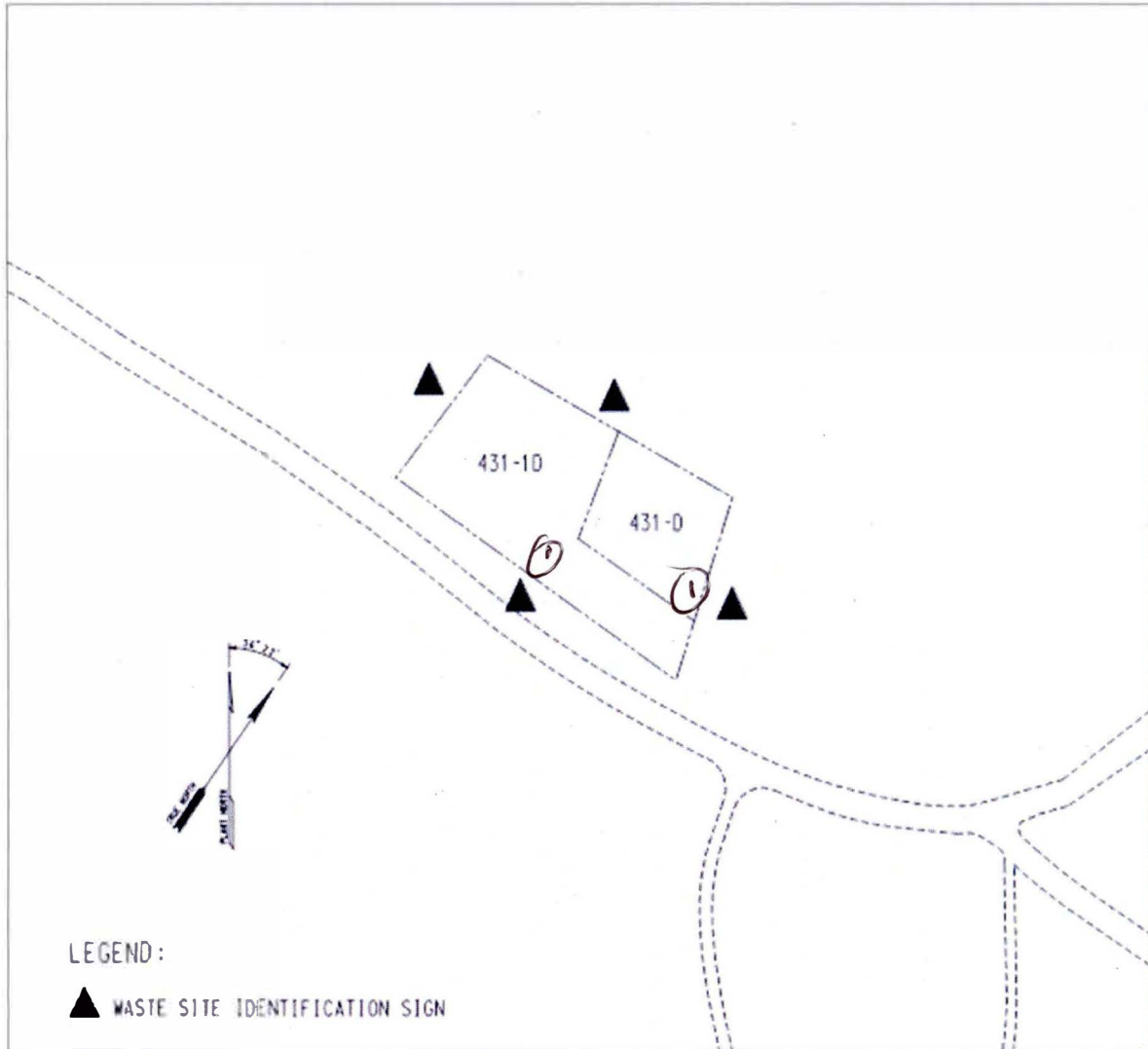
Inspected By		
CHARLES P. CARTER (Print Name)	 (Signature)	7-16-18 (Date)

Review By Post-Closure Manager		
George Joyner (Print Name)	 (Signature)	8/9/18 (Date)

D-Area Burning/Rubble Pits (Bldgs. 431-D And 431-1D) Field
Inspection Checklist

Manual: C3
Procedure: ER-IDS-019-003
Revision: 8
Page: 3 of 3

MAP OF D-AREA BURNING/RUBBLE PITS (BLDG. 431-D & 431-1D)



NOTES: TWO (2) WASTE UNIT SIGNS ARE FADED AND
NEED REPLACEMENT. SIGNS WILL BE ORDERED FROM
SIGN SHOP + REPLACED BY POST CLOSURE MAINT.
NO FURTHER ENTRIES CR. 7-16-18

