

**ENVIRONMENTAL COMPLIANCE & AREA COMPLETION PROJECTS (EC&ACP) STANDARD
OPERATING PROCEDURES, VOL. I**
Manual: C3
Procedure: ER-IDS-019-024
Revision: 5
Effective Date: 06/01/2016
Type-Class: Form
Page: 1 of 3
**FORD BUILDING SEEPAGE BASIN OPERABLE UNIT (BLDG. 904-91G) FIELD INSPECTION
CHECKLIST**
WORKING COPY

This document is a Working Copy. Prior to start of work, verify this is the latest revision per the Procedure Index.

Charles F. Carter

Verified By

12-18-18

Date

CAUTION

The Inspector shall IMMEDIATELY notify the Post-Closure Manager and Environmental Compliance Authority if there has been a breach or compromise of the institutional controls of this waste unit. This notification shall be in accordance with Savannah River Site post-closure inspection procedures.

NOTE

1. Manual C3, ER-SOP-019, *Waste Unit Inspection and Maintenance*, shall be referred to for inspection details.
2. Monitoring wells associated with this waste unit are maintained in accordance with EC&ACP monitoring well procedures.
3. Steps in this checklist may be completed concurrently or in any order.



SCHEDULED



UNSCHEDULED

A = Satisfactory X = Unsatisfactory (Explanation required)		A or X	Observation/Corrective Action Taken
1.	Verify roads are accessible.	A	
2.	Verify waste unit signs (4) are in acceptable condition, have correct information and are legible from a distance of 25 feet.	A	
3.	Verify there is no excavating, digging or construction activity on soil cover or over subsurface process piping (identified by signs).	A	

Ford Building Seepage Basin Operable Unit (Bldg. 904-91G) Field Inspection Checklist

Manual: C3
 Procedure: ER-IDS-019-024
 Revision: 5
 Page: 2 of 3

 SCHEDULED

 UNSCHEDULED

A = Satisfactory X = Unsatisfactory (Explanation required)	A or X	Observation/Corrective Action Taken
4. Verify no woody vegetation is growing on the soil cover. Remove or identify as needed.	A	
5. Visually check vegetative cover for grass density with no bare spots more than 3 feet by 3 feet in area. The height of vegetation should not impair visual inspection of the soil cover. This will be determined by the Inspector.	A	
6. Check soil cover for signs of erosion or depressions (subsidence).	A	
7. Check for signs of burrowing animals.	X	ACTIVE ANT MOUNDS ON SOIL COVER. SEE MAP NOTE: (D). REFI MAINT. REGISTER PL-2018-0012
8. Other <i>NO FURTHER ENTRIES</i>		<i>CPL 12-18-18</i>

Inspected By

CHARLES J. CARTER
 (Print Name)

Charles P. Carter
 (Signature)

12-18-18
 (Date)

Review By Post-Closure Manager

George W. Joyner
 (Print Name)

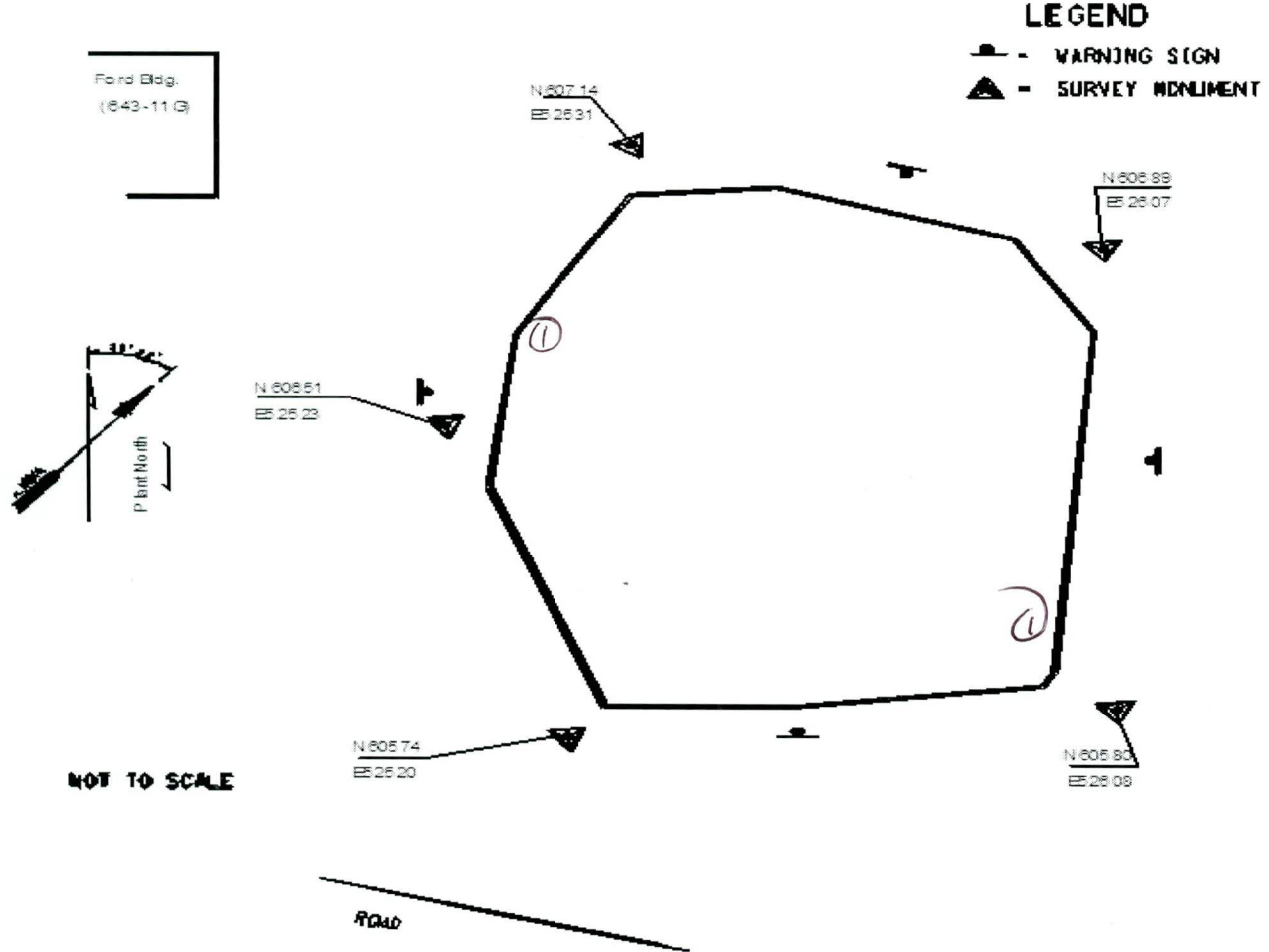
George W. Joyner
 (Signature)

1/3/19
 (Date)

Ford Building Seepage Basin Operable Unit (Bldg. 904-91G)
Field Inspection Checklist

Manual: C3
Procedure: ER-IDS-019-024
Revision: 5
Page: 3 of 3

Map of Ford Building Seepage Basin Operable Unit (Bldg. 904-91G)



NOTES: ① = ACTIVE ANT MOUNDS ON SOIL COVER. Applied 0.5 lbs OF EXTINGUISH ANT BAIT.

~~NO FURTHER ENTRIES~~

CPC 12-18-18

