

**Shelia Mcfalls**

---

**From:** Shelia Mcfalls  
**Sent:** Wednesday, July 27, 2022 10:17 AM  
**To:** 'Jon Richards (richards.jon@epa.gov)'; Fulmer, Susan  
**Cc:** Rob Pope (pope.robert@epa.gov); Heather Cathcart (cathcahe@dhec.sc.gov); HENNESSEY, BRIAN; ADAMS, KAREN; MORROW, KAREN D; Chris Bergren; Shannan Lucero; Amy Meyer; Jeffcj Ward; Kelsey Holcomb; Thelesia Oliver; J Ross; Steven Conner; Joao Cardoso-Neto; Joseph Burch; Dena Brett; Bette Ross; Fuss, Travis R.; Gregory N. O'Quinn (oquinngn@dhec.sc.gov); K. Leigh Beatty (beattykl@dhec.sc.gov); Bethany Cameron; herlonhl@dhec.sc.gov  
**Subject:** Request to Excavate within M-Area Operable Unit Land Use Control Boundaries to Support 782-1M Pump House Deactivation Activities  
**Attachments:** Figure 1 - 782-1M Deactivation.pdf

SRNS-J2000-2022-00526

Jon and Susan,

Savannah River Nuclear Solutions, LLC (SRNS) has requested approval to conduct excavation activities within the M Area Operable Unit (MAOU) land use control (LUC) boundary for the isolation of a fire water service line to support deactivation of the 782-1M Pump House. SRNS will isolate the fire water service by capping the lines. The lines may be 6 feet or deeper, so the plan is to excavate about a foot deeper than the lines in order to cap them. All excavated soils will remain on unit and used to re-cover the fire water service lines following capping.

The requested area is within the MAOU LUC boundary, but outside the areas of known contamination warranting action as identified by the RCRA Facility Investigation / Remedial Investigation (RFI/RI) Work Plan, RFI/RI Report with Baseline Risk Assessment and Corrective Measures Study / Feasibility Study for MAOU (WSRC-RP-2006-4060, Revision 1, July 2007). In addition, the request is outside the LUC boundary for the M-Area Inactive Process Sewer Lines Operable Unit (WSRC-RP-2006-4068, Revision 1, April 2007) which provides an offset of approximately 25 feet from potential contamination associated with the sewer line and any contemplated excavation or penetration. Per the MAOU Land Use Control Implementation Plan (WSRC-RP-2008-4067, Revision 1, April 2009), Savannah River Site is requesting approval to isolate the fire water service at the 782-1M Pump House to support deactivation activities. Figure 1 shows the location of the MAOU and MIPSL LUC boundaries as well as the location of the 782-1M Pump House.

Please note that the Site Use permit for the area remains in force for these activities. The permit includes appropriate spill response measures and stipulates that another operable unit will not be created.

All email correspondence will be placed in the Administrative Record File to document the request and regulatory decision regarding the request.

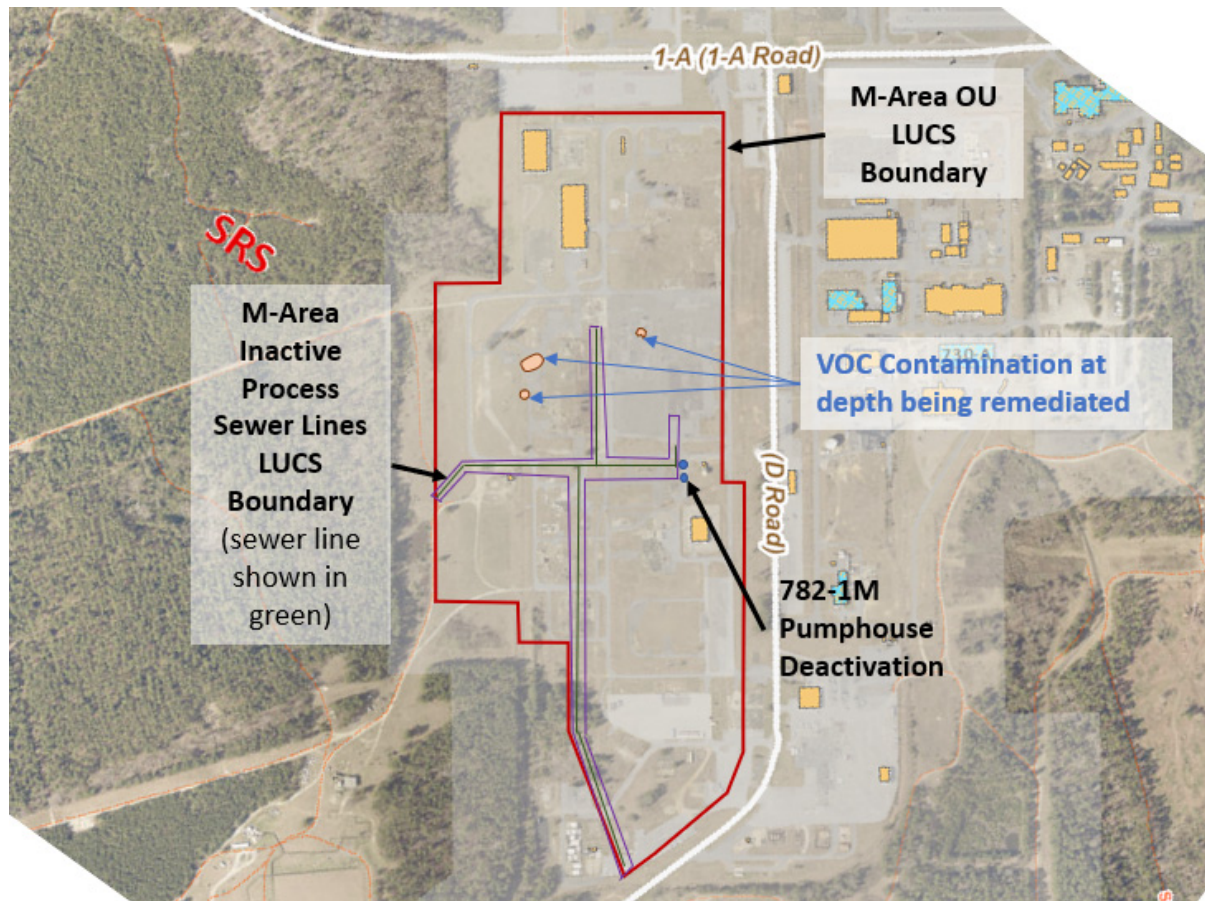
Please review the information contained in this email and reply by close of business, August 10, 2022 if the request is acceptable to you. If you would like to discuss this notification, please contact Brian Hennessey at (803) 952-8365 or [brian.hennessey@srs.gov](mailto:brian.hennessey@srs.gov) or Karen Adams at (803) 952-7871 or [karen-m.adams@srs.gov](mailto:karen-m.adams@srs.gov).

Please contact me if you have any questions, comments, or concerns.

Thanks

**Shelia L. McFalls** | **Savannah River Nuclear Solutions, LLC** | Environmental Compliance & Area Completion Projects | [shelia.mcfalls@srs.gov](mailto:shelia.mcfalls@srs.gov) | 1.803.952.6819 office | 1.803.645.8119 cell | 1.803.725.7243, #19367 pager | 1.803.952.6403 fax | Savannah River Site | Building 730-4B, 3134 | Aiken, SC 29808





Note: Figure is not to scale.

Figure 1. 782-1M Pump House Location within M-Area LUC Boundaries