

# ENVIRONMENTAL COMPLIANCE & AREA COMPLETION PROJECTS

## Baseline Asbestos Inspection Report of Building 482-2D



Q-APG-D-00006  
October 30, 2019



**INTEROFFICE MEMORANDUM**

**Q-APG-D-00006**  
RSM Track Number 10755

October 30, 2019

TO: Andrew MacMillan, 730-4B

FROM: Heath McGregor, 730-4B

**BASELINE ASBESTOS INSPECTION REPORT OF BUILDING 482-2D**

On October 29, 2019, an inspection was performed to determine the presence of any suspect Asbestos Containing Material (ACM) in building 482-2D. Constructed in the 1950's, 482-2D is single-story building with a steel frame, corrugated cementitious siding, and a corrugated cementitious roof. The building is supported by a low-rise (approximately 2') concrete wall and concrete slab with a footprint of approximately 580 square feet. The building is slated for demolition and was unoccupied at the time of this inspection.

Five (5) homogenous types of material were evaluated during this inspection. Please see the attached Inspection Survey Table for descriptions, estimated quantities, and locations of the materials inspected.

**SUMMARY**

All accessible, visible, suspect ACM was evaluated at the completion of this inspection. No visible Thermal System Insulation (TSI) was observed during the completion of this inspection. **The removal of all identified Presumed Asbestos Containing Material (PACM) must be performed by asbestos trained personnel, with proper permitting, and waste disposal procedures.** This evaluation was based on facility knowledge, material knowledge, and document review.

Although building 482-2D has been deactivated and placed in shutdown condition, the inspector could not verify that the building was de-energized. Therefore, all suspect materials visually identified inside the electrical panel boxes must be considered PACM until sampled by a licensed asbestos inspector. In addition, all gaskets (if any) must be considered PACM. Gaskets in unbroken flanges are determined to be encased in a hardened substance therefore not subject to regulatory requirements if undisturbed.

If this report is used for contract bid or regulatory permit purposes, it is the obligation of the user to verify the actual quantities of the materials presented in the Inspection Survey Table. In accordance with 40CFR part 61.145 a **ten-day notification** must be filed with SC DHEC prior to demolition.

<u>ASBESTOS INSPECTOR</u>	<u>INSTITUTION</u>	<u>CERT. NO</u>	<u>STATE</u>	<u>EXP. DATE</u>
Heath McGregor	Greenville Tech College	192-EVT502-091	SC	04/09/2020

Included on the SRS Long-term in-house Group license ABS 8021

C: C.R.F., 773-52A  
Site D&D Correspondence File  
J.K. Barrineau, 730-4B  
Joseph Burch, 730-4B  
Mark Wright, 705-3C  
Lance Cramer, 730-4B

**INSPECTION SURVEY TABLE OF BUILDING 482-2D**

Homogeneous Number	SUSPECT MATERIAL	DESCRIPTION OF MATERIAL and SAMPLE NUMBERS	AMOUNT	TEST RESULTS	FRIABLE-NONFRIABLE
H01	Miscellaneous	<b>Description:</b> Corrugated cementitious panels (painted/coated) <b>Sample Numbers:</b> N/A, suspected to contain ACM.	Approximately 1,500 Square Feet	<b>PACM</b>	Non-friable Good Condition See Note 1.
<b>Location: Observed on all sides and roof of the building.</b>					
H02OB	Miscellaneous	<b>Description:</b> Various type sealants (painted) <b>Sample Numbers:</b> N/A, directly adhered to PACM.	Not Measured	<b>PACM</b> <b>See Note 2.</b>	Non-friable Good Condition
<b>Location: Observed in seams and penetrations at various locations on the cementitious panels.</b>					
H03	Miscellaneous	<b>Description:</b> Black colored backer rod <b>Sample Numbers:</b> N/A, PACM due to application method and age of installation.	Not Measured	<b>PACM</b>	Non-friable Good Condition
<b>Location: Observed at seams of exterior corrugated cementitious panels.</b>					
H04	Miscellaneous	<b>Description:</b> Cloth electrical wire jacketing (braided) <b>Sample Numbers:</b> N/A, inaccessible for sample collection.	Approximately 1 Linear Foot	<b>PACM</b>	Non-friable Good Condition
<b>Location: Observed inside panel box located on interior northeast side wall (See Photo 1).</b>					
H04	Miscellaneous	<b>Description:</b> Black colored arc shoot plates <b>Sample Numbers:</b> N/A, inaccessible for sample collection.	Approximately 1 Square Foot	<b>PACM</b>	Non-friable Good Condition
<b>Location: Observed inside panel box located on interior northeast side wall (See Photo 2).</b>					

1. This material can be rendered friable if cut, sanded, or abraded.

2. This type of material may not contain ACM but is directly adhered to PACM. Therefore, the possibility of cross contamination exists, and the material must be considered PACM.

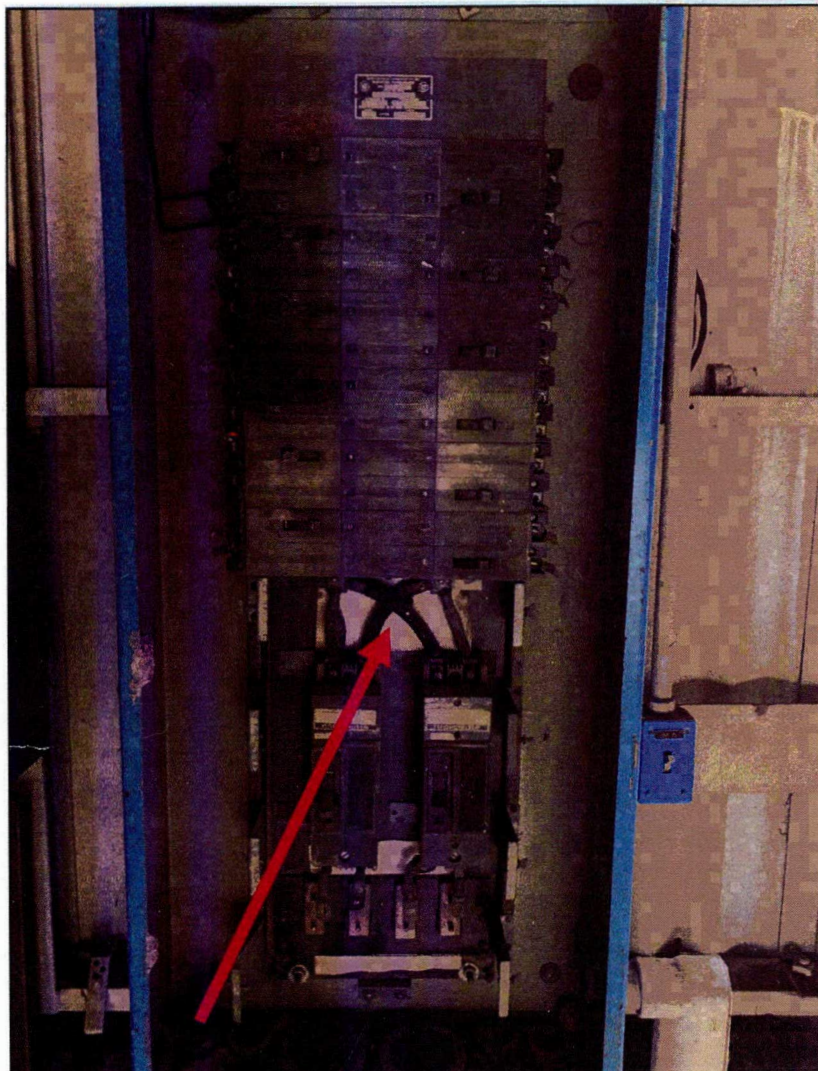


Photo 1. View of electrical wire jacking (facing northeast).

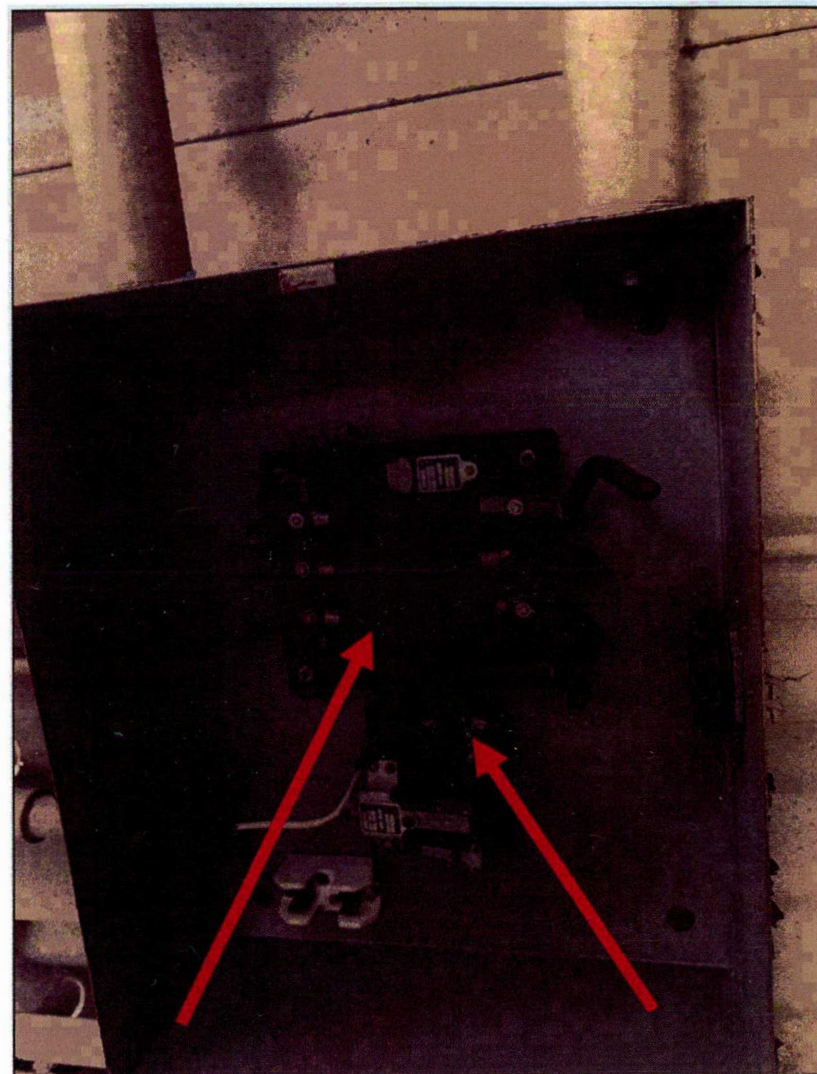


Photo 2. View of arc shoot plates (facing northeast).