

P-AREA BURNING RUBBLE PIT (BLDG. 131-P) FIELD INSPECTION CHECKLIST

WORKING COPY

This document is a Working Copy. Prior to start of work, verify this is the latest revision per the Procedure Index.

Dylan Price Verified By 08/09/2024 Date

CAUTION

The Inspector is required to IMMEDIATELY notify the Post-Closure Manager and Environmental Compliance Authority if there has been a breach or compromise of the institutional controls of this waste unit. This notification is required to be in accordance with Savannah River Site post-closure inspection procedures.

NOTE

1. Manual C3, Volume I, Procedure ER-SOP-019, Waste Unit and IOU Inspection and Maintenance, is referenced for inspection details.
2. Monitoring wells associated with this waste unit are maintained in accordance with Environmental Compliance & Area Completion Projects monitoring well procedures.
3. Steps in this checklist may be completed concurrently or in any order.

SCHEDULED

UNSCHEDULED

A = Satisfactory X = Unsatisfactory (Explanation required)		A or X	Observation/Corrective Action Taken
1.	VERIFY roads to waste unit are accessible.	A	
2.	VERIFY waste unit signs (4) are in acceptable condition, have correct information, and are legible from a distance of 25 feet.	A	

P-Area Burning Rubble Pit (Bldg. 131-P) Field Inspection Checklist

Manual: C3
 Procedure: ER-IDS-019-030
 Revision: 6
 Page: 2 of 3

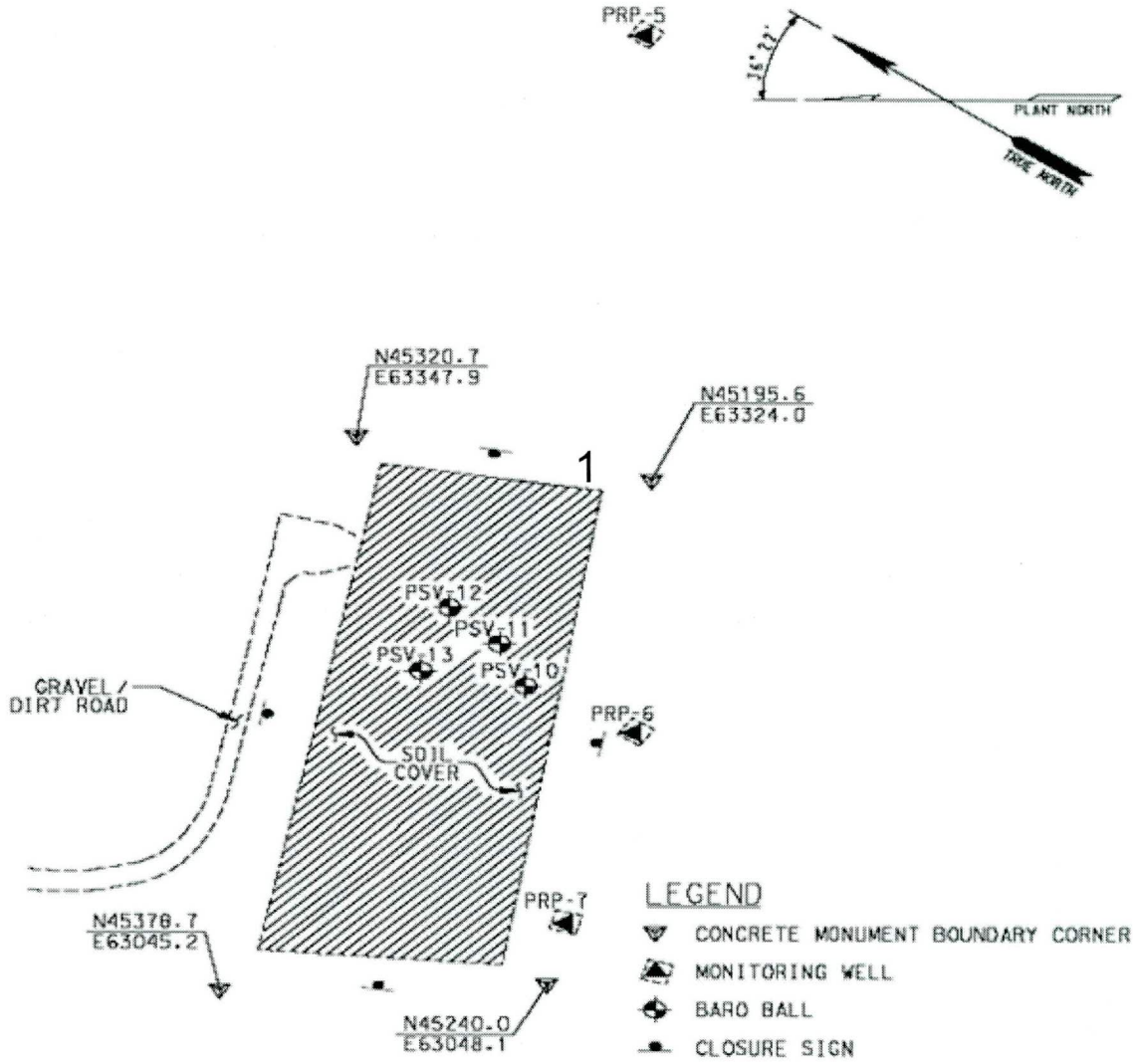
SCHEDULED UNSCHEDULED

A = Satisfactory X = Unsatisfactory (Explanation required)		A or X	Observation/Corrective Action Taken
3.	VERIFY there are no unauthorized excavations, digging, or construction activities on soil cover.	A	
4.	CHECK integrity of drainage ditches for presence of excessive erosion, sediment build-up, and any debris restricting water flow.	X	Debris found along fenceline in drainage ditch. Removed. Ref Post Closure Maint. Reg. : PC-2024-00042
5.	VERIFY no woody vegetation is growing on soil cover, AND REMOVE OR IDENTIFY as needed.	A	
6.	VISUALLY CHECK vegetative cover for grass density with no bare spots more than 3 feet by 3 feet in area. (The height of vegetative cover should not impair visual inspection of soil cover. This will be determined by the Inspector.)	A	
7.	CHECK soil cover for signs of erosion or depressions (subsidence).	A	
8.	CHECK for evidence of burrowing animals.	A	
9.	Other. None	A	

Inspected By		
Dylan Price <i>(Print Name)</i>	<i>Dylan Price</i> <i>(Signature)</i>	08/09/2024 <i>(Date)</i>

Reviewed By Post-Closure Manager		
Brian Hanshew <i>(Print Name)</i>	<i>BH</i> <i>(Signature)</i>	8/27/24 <i>(Date)</i>

Map of P-Area Burning Rubble Pit



NOTES: Inspected per ER-SOP-019, Section 5.1

1: Debris removed

No Further Entries

DP
8/9/24

POST CLOSURE MAINTENANCE REGISTER

Index Number

Unit Name

108 P-AREA BURNING/RUBBLE PIT - 131-P

Watershed STEEL CREEK

AHA # AHA-ER-5534
Work Order # N/A
Work Group POST CLOSURE MAINTENANCE
Priority Medium
RCRA NO

Maintenance Number PC-2024-00042 Maintenance Status Complete
Inspection Date 8/9/2024 Chemical Type NA
Completion Date 8/9/2024 Chemical Name
Amount Used

Description Of Maintenance Item

Pinestraw and small sticks in drainage ditch along fence..

Maintenance Item Corrected

Post Closure Maintenance removed debris.

Notes New observation Corrected on the spot.
ER-IDS-019-030

Approved by : Brian Hanshaw - ACP Post Closure Manager

Signature



Approval date : 8/27/24