

**ENVIRONMENTAL COMPLIANCE & AREA COMPLETION PROJECTS (EC&ACP) STANDARD
OPERATING PROCEDURES, VOL. I**
Manual: C3
Procedure: ER-IDS-019-012
Revision: 6
Effective Date: 06/01/2016
Type-Class: Form
Page: 1 of 3
K-AREA REACTOR SEEPAGE BASIN (BLDG. 904-65G) FIELD INSPECTION CHECKLIST
WORKING COPY

This document is a Working Copy. Prior to start of work, verify this is the latest revision per the Procedure Index.

Charles P. Carter

 Verified By

4-4-18

 Date

CAUTION

The Inspector shall IMMEDIATELY notify the Post-Closure Manager and Environmental Compliance Authority if there has been a breach or compromise of the institutional controls of this waste unit. This notification shall be in accordance with Savannah River Site post-closure inspection procedures.

NOTE

1. Manual C3, ER-SOP-019, *Waste Unit Inspection and Maintenance*, shall be referred to for inspection details.
2. Monitoring wells associated with this waste unit are maintained in accordance with EC&ACP monitoring well procedures.
3. Steps in this checklist may be completed concurrently or in any order.

 SCHEDULED
 UNSCHEDULED

A = Satisfactory X = Unsatisfactory (Explanation required)		A or X	Observation/Corrective Action Taken
1.	Verify roads are accessible.	A	
2.	Verify waste unit signs (4) and subsurface process piping signs (5) are in acceptable condition, have correct information, and are legible from a distance of 25 feet.	X	THE 4 WASTE UNIT SIGNS NEED REPLACING. SEE MAP NOTED. REF. MAINT REGISTER PC-2018-00035

K-Area Reactor Seepage Basin (Bldg. 904-65G) Field Inspection Checklist

Manual: C3
 Procedure: ER-IDS-019-012
 Revision: 6
 Page: 2 of 3

SCHEDULED

UNSCHEDULED

A = Satisfactory		A or X	Observation/Corrective Action Taken
X = Unsatisfactory (Explanation required)			
3.	Verify there is no excavating, digging or construction activity on soil cover or over the subsurface process piping (identified by signs).	X	HOGS ROOTING ON SIDE SLOPES OF CAP. SEE MAP NOTE ①. REF. MAINT REGISTER PC-2018-00036
4.	Verify no woody vegetation is growing on the soil cover. Remove or identify as needed.	A	
5.	Visually check vegetative cover for grass density with no bare spots more than 3 feet by 3 feet in area. The height of vegetation should not impair visual inspection of soil cover. This will be determined by the Inspector.	A	
6.	Check soil cover for signs of erosion or depressions (subsidence).	A	
7.	Check for signs of burrowing animals.	X	ACTIVE ANT MOUNDS ON SOIL COVER SEE MAP NOTE ③. REF. MAINT REGISTER PC-2018-00037
8.	Visually inspect concrete markers at four corners of basin to ensure their integrity. The markers should be visible and free of damage.	A	
9.	Other		NO FURTHER ENTRIES CPC 4-4-18

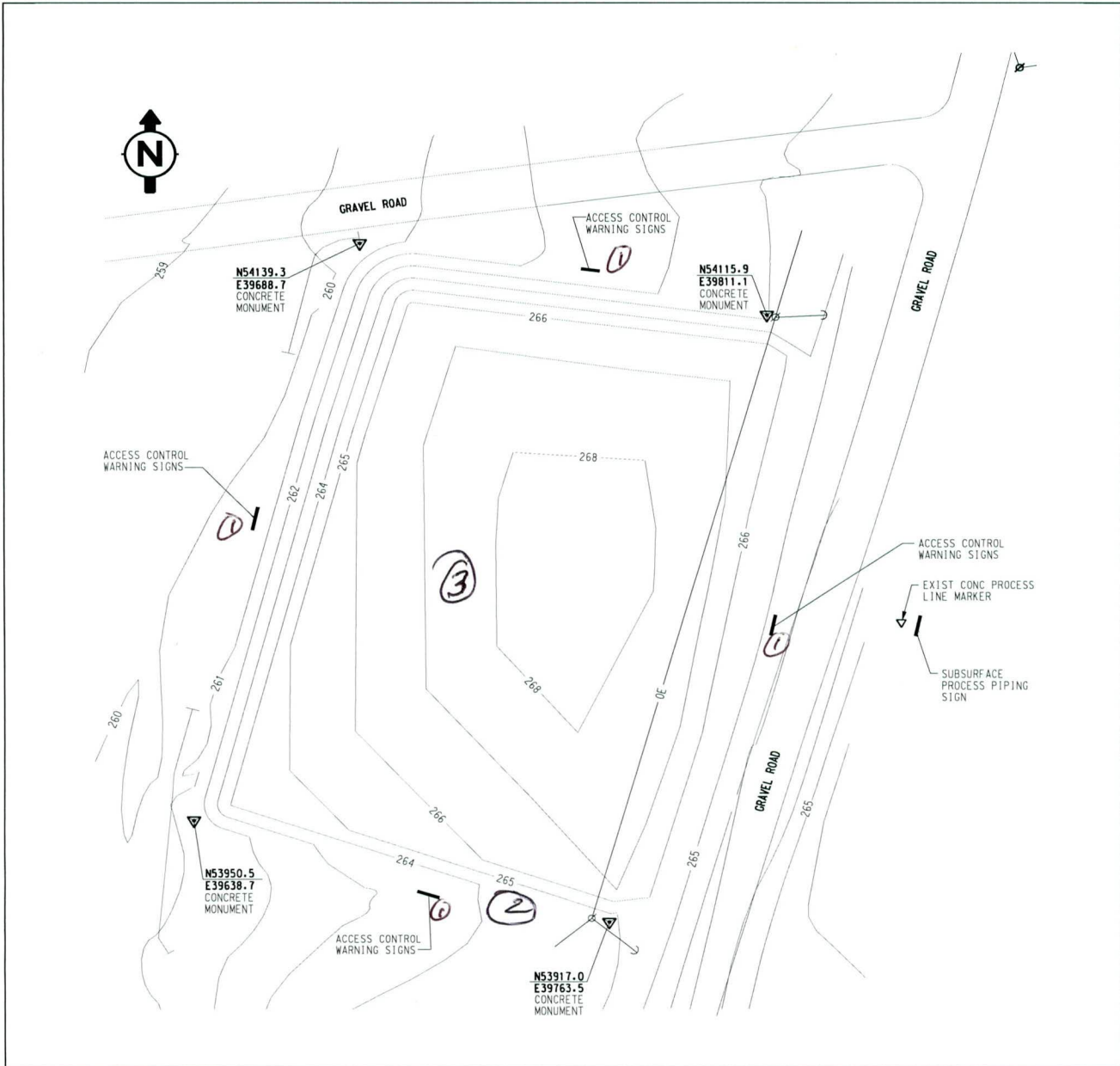
Inspected By		
CHARLES R. CARTER (Print Name)	<i>Charles R. Carter</i> (Signature)	4-4-18 (Date)

Review By Post-Closure Manager		
George W. Joyner (Print Name)	<i>George W. Joyner</i> (Signature)	5/29/18 (Date)

**K-Area Reactor Seepage Basin (Bldg. 904-65G) Field
Inspection Checklist**

Manual: C3
Procedure: ER-IDS-019-012
Revision: 6
Page: 3 of 3

Map of K-Area Reactor Seepage Basin (Bldg. 904-65G)



NOTES: (1) = THE 4 WASTE UNIT SIGNS NEED REPLACED. SIGA WILL BE FABRICATED BY THE SIGA SHOP AND REPLACED BY POST CLOSURE MAINT.
 (2) = HOFS ROOTING ON SIDE SLOPES OF CAP. USES WILL MAKE REPAIRS WITH TOPSOIL, GRASS SEED + STRAW. (3) = ACTIVE ANT MOUNDS ON SOIL COVER. Applied .5 lbs OF EXTINGUISH ANT BAIT. CPL 4-4-18

POST CLOSURE MAINTENANCE REGISTER

Index Number
Unit Name

87 K -AREA REACTOR SEEPAGE BASIN - 904-65G

Watershed PEN BRANCH

AHA # ER-2161
 Work Order # NA
 Work Group POST CLOSURE MAINTENANCE
 Priority Medium
 RCRA NO

Maintenance Number PC-2018-00035 Maintenance Status Complete
 Inspection Date 4/4/2018 Chemical Type NA
 Completion Date 5/11/2018 Chemical Name
 Amount Used

Description Of Maintenance Item

The four Waste Unit signs need replacing.

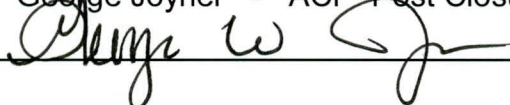
Maintenance Item Corrected

Replaced the four Waste Unit signs.

Notes New observation.

Approved by : George Joyner - ACP Post Closure Manager

Signature



Approval date :

5/29/18

POST CLOSURE MAINTENANCE REGISTER

Index Number
Unit Name

87 K -AREA REACTOR SEEPAGE BASIN - 904-65G

Watershed PEN BRANCH

AHA # ER-2161
 Work Order # NA
 Work Group POST CLOSURE MAINTENANCE
 Priority Medium
 RCRA NO

Maintenance Number	PC-2018-00037	Maintenance Status	Complete
Inspection Date	4/4/2018	Chemical Type	Pesticide
Completion Date	4/4/2018	Chemical Name	Extinguish
		Amount Used	0.5 Pounds

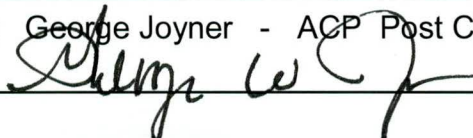
Description Of Maintenance Item
 Active ant mounds on waste unit

Maintenance Item Corrected
 Applied Extinguish pesticide

Notes New observation.

Approved by : George Joyner - ACP Post Closure Manager

Signature



Approval date :

5/29/18